

Infestation of the cupped oysters *Crassostrea angulata*, *C. gigas* and their first-generation hybrids by the copepod *Myicola ostreae*: differences in susceptibility and host response

F. M. BATISTA^{1,2*}, P. BOUDRY³, A. DOS SANTOS⁴, T. RENAULT⁵ and F. RUANO⁴

¹Instituto Nacional de Recursos Biológicos, INRB/IPIMAR, Av. 5 de Outubro, 8700-305 Olhão, Portugal

²Instituto de Ciências Biomédicas Abel Salazar (ICBAS), Universidade do Porto, Largo Prof. Abel Salazar, 2, 4099-003 Porto, Portugal

³Ifremer, UMR M100 Physiologie et Ecophysiologie des Mollusques marins, BP 70, 29280 Plouzané, France

⁴Instituto Nacional de Recursos Biológicos, INRB/IPIMAR, Av. de Brasília, 1449-006 Lisboa, Portugal

⁵Ifremer, Laboratoire de Génétique et Pathologie (LGP), 17390 La Tremblade, France

(Received 14 December 2008; revised 12 January 2009; accepted 12 January 2009; first published online 6 March 2009)

SUMMARY

We studied the prevalence and intensity of the parasitic copepod *Myicola ostreae* in 2 closely related oysters *Crassostrea angulata* and *C. gigas* and their F1 hybrids. The effects on host and host reaction were also analysed to better understand host-parasite relationships between copepods and bivalve molluscs. Full reciprocal crosses were carried out between *C. angulata* and *C. gigas* and the progenies were reared in the wild in Ria Formosa Lagoon (Portugal), allowing natural infestation by *M. ostreae*. Prevalence and intensity were significantly higher in *C. angulata* than in *C. gigas*. The parasite level of F1 hybrids was similar to *C. angulata* and significantly higher than in *C. gigas*. The results of our study support a hypothesis of dominantly inherited susceptibility to *M. ostreae* infestation. Moreover, copepods were observed on the gill surface of *C. gigas* engulfed by a capsule-like structure. Histological analyses revealed that the copepods were surrounded by a massive agglomerate of haemocyte-like cells encircled by a thin layer of fibroblast-like cells. This encapsulation response was not observed in *C. angulata* or in F1 hybrids. These results suggest that the differential susceptibility to *M. ostreae* between *C. angulata* and *C. gigas* may be ascribed to host defence factors.

Key words: oysters, copepods, hybridization, parasitism, dominance inheritance, host-parasite relationship, host reaction, encapsulation.

INTRODUCTION

Approximately one-third of the known copepod species are parasites or commensals of invertebrates or fish (Humes, 1994; Ho, 2001). Some parasitic copepods of fish species, such as the members of the family Caligidae, often referred to as sea lice, are responsible for serious disease problems in fish farming (Pike and Wadsworth, 1999). The biology of parasitic copepods of invertebrates is much less well known than that of fish (Kabata, 1981). The best-documented parasitic copepods of bivalve molluscs belong to the order Poecilostomatoida (Ho, 2000). Most of them are ectoparasites that are usually found in the mantle cavity of their hosts, but some cases of endoparasites have also been described (Lauckner, 1983). It is presumed that the majority of these copepods are not really harmful to their hosts (Lauckner, 1983). The damage caused by some of

these copepods to their bivalve hosts is thought to be mainly caused by their appendages used for attachment and crawling. Nevertheless, some parasitic copepods have been associated with high mortality rates in bivalve molluscs (Ho and Zheng, 1994). It is not known if the variation of resistance or tolerance to parasitic copepods in bivalves is under genetic control and relatively little is also known about the defence mechanisms of bivalves to parasitic copepods.

The parasitic copepod *Myicola ostreae* belongs to the family Myicolidae and was originally described as a parasite of the Pacific oyster *Crassostrea gigas* in Japan by Hoshina and Sugiura (1953). Several bivalve hosts have been reported in Europe for *M. ostreae* after the introduction of *C. gigas* namely, the Portuguese oyster *C. angulata* (Comps, 1972), the European flat oyster *Ostrea edulis* (His, 1979) and the razor clam *Sinonovacula constricta* (Kim, 2004). Gill lesions caused by *M. ostreae* have been observed in *C. angulata* and *C. gigas* and it is presumed that high infestation intensity may have some impact on the host (Comps, 1972; His, 1979). This copepod is

* Corresponding author. Present address: School of Ocean Sciences, Bangor University, Menai Bridge, Gwynedd LL59 5EY, UK. E-mail: fmbatista@yahoo.com

presumed to be native from Asia as it is known to be present in Japan and Korea, countries where *C. gigas* is endemic (Hoshina and Sugiura, 1953; Kim, 2004). *M. ostreae* was probably accidentally introduced into France with the mass introduction of *C. gigas* from Japan in the 1970's (His, 1979). Since then this copepod has been observed in several European countries (Streftaris *et al.* 2005). Little is known about the biology of *M. ostreae*, but it is presumed to share common features with other members of the family Myicolidae having 6 naupliar and 5 copepodid stages before they reach the adult stage (Ho, 2000). The infective stage is the first copepodid where individuals seek a suitable host.

C. angulata and *C. gigas* are two closely related edible cupped oysters of high commercial importance. They are presumed to be native to the North West Pacific region and were introduced into many countries (Ruesink *et al.* 2005). *C. angulata* was accidentally introduced in Europe from Asia, probably soon after the genesis of global shipping routes (Boudry *et al.* 1998). *C. gigas* was voluntarily introduced into Europe in the late 1960's and early 1970's (Grizel and Héral, 1991). *C. angulata* and *C. gigas* interbreed readily in the laboratory (Menzel, 1974) as they are genetically very closely related, as revealed by allozymic markers (Buroker *et al.* 1979). Hybrids are fully fertile and no hybridization barrier has yet been demonstrated in the laboratory (Huvet *et al.* 2001, 2002). There is also evidence that the two taxa can hybridize in the wild, namely in Ria Formosa lagoon, Portugal (Huvet *et al.* 2004) where the present study was performed. Nevertheless, genetic (O'Foighil *et al.* 1998; Huvet *et al.* 2000; Leitão *et al.* 2007), morphological (Batista *et al.* 2008) and physiological (Haure *et al.* 2003; Batista *et al.* 2007) differences have been observed between the two taxa. In the present work we performed an experiment in the wild that allowed us to describe the infestation level of *M. ostreae* in the closely related cupped oysters *C. angulata*, *C. gigas* and their F1 hybrids. The current study allowed us to propose a genetic basis for resistance mechanisms to *M. ostreae* in cupped oysters. Moreover, histopathological analyses were also performed to examine host response mechanisms and impact on the host.

MATERIALS AND METHODS

Experimental procedure

Crassostrea angulata and *C. gigas* adults were collected from wild populations in Sado river (Portugal) and Seudre estuary (France), respectively. Full reciprocal crosses were carried out using 20 *C. angulata* individuals (15 females and 5 males) and 18 *C. gigas* individuals (10 females and 8 males) in order to produce the following groups: *C. angulata* (AA),

C. gigas (GG), hybrids derived from *C. angulata* females and *C. gigas* males (AG), and hybrids derived from *C. gigas* females and *C. angulata* males (GA). Larval rearing was carried out in the shellfish hatchery of IFREMER Genetic and Pathology Laboratory (La Tremblade, France) and the juvenile rearing was performed in the shellfish hatchery of IPIMAR/INRB in Tavira (Portugal) as described by Batista *et al.* (2007). Four mesh bags with 50 oysters each per group were transferred from the Tavira shellfish hatchery to the Cacela-Velha site in Ria Formosa Lagoon (Portugal) on 3 March 2004. At the beginning of the experiment, the oysters from the 4 groups had approximately the same mean shell height and live weight and were 204 days old. Ria Formosa is a tidal lagoon system located on the southern coast of Portugal with a mean depth of 4 m and does not receive permanent fresh water streams. The Cacela-Velha site is in a mid-intertidal zone and the sea floor is a mixture of sand and mud. Salinity at the Cacela-Velha site during the present study was generally high (around 35 ppt) and temperature ranged between 12 and 25 °C. Oyster bags were placed off-bottom (*ca.* 40 cm) on iron frame tables. The oysters were collected on 26 November 2004. In total 280 oysters were examined by macroscopic observation (between 11 and 22 individuals per bag) for the presence of parasitic copepods in their soft tissues and the number of copepods present in each individual was counted for 84 of them. The copepods observed were identified based on the description by Hoshina and Sugiura (1953). The parasite level in the oysters was assessed using 2 parameters: prevalence (percentage of infested hosts) and intensity (number of parasites per infested host). The dry shell weight of both valves of the oysters analysed was recorded to a precision of 0.001 g. For histological examination, a transverse section (*ca.* 5 mm thick) through the body, containing mantle, gonad, digestive gland and gills was done for each specimen. The tissues were then fixed in Davidson's solution for 48 h and preserved in 70% ethanol. Sections were cut at a thickness of 3–4 µm, deparaffinized, and stained with haematoxylin and eosin following standard techniques.

Data analysis

Data were analysed using one-way analysis of variance (ANOVA) to determine if there were significant differences among groups for dry shell weight, prevalence and intensity of *M. ostreae* using the oysters bags as the replicates ($n=4$). The Cochran test was used to assess heteroscedasticity. Pair-wise comparisons between groups were performed using Student-Newman-Keuls (SNK) tests when significant differences were revealed by ANOVA.

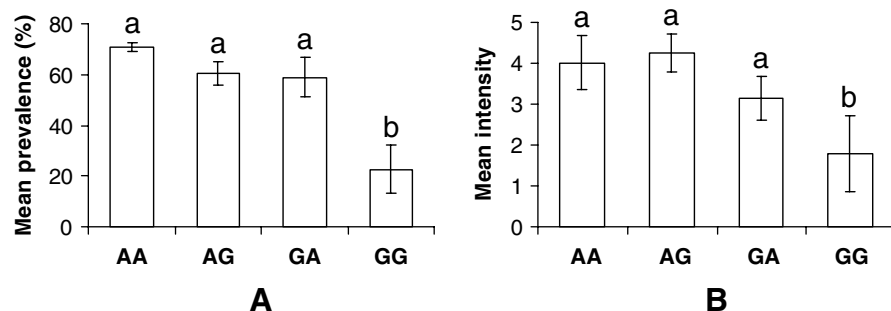


Fig. 1. Mean prevalence (A) and intensity (B) of *Myicola ostreae* in *Crassostrea angulata* (AA), *C. gigas* (GG) and their reciprocal hybrids (AG and GA). The error bars represent the standard deviation ($n=4$). Groups with different letters are significantly different (SNK test, $P < 0.05$).

RESULTS

The morphological features of the female copepods observed were consistent with the characters proposed by Hoshina and Sugiura (1953) for *M. ostreae*, namely: female body cylindrical, with prosome swollen in ovigerous specimens, caudal ramus slender, with setae much shorter than ramus, the first antenna with 7 segments, the second antenna with 3 segments and maxilliped absent. The egg sacs were multiseriate. The mean length of the specimens observed was 2.1 mm and ranged between 1.8 and 2.5 mm (not including setae on caudal rami). The main morphological features that allowed us to distinguish the copepods observed in the present study from other species of the genus *Myicola* were: (1) size of ovigerous females (between 1.8 and 2.5 mm); (2) number of eggs in egg sac (about 40 eggs); (3) caudal ramus of females (length/width = 5.0); and (4) second segment of the legs 5 of females (length/width = 1.9). The copepods were observed in the gills of the oysters and no other organ appeared to be affected. All copepods observed were females that were carrying eggs. Some of the females carried eggs that when disturbed hatched free-swimming nauplius with a length of approximately 150 μm .

Significant differences in the prevalence of *M. ostreae* were observed among groups ($F_{(3,12)} = 40.4$, $P < 0.001$). In the *C. angulata* group (AA), the mean prevalence of *M. ostreae* was 71% whereas in AG and GA hybrids a slightly lower prevalence was observed (60 and 59%, respectively), but not significantly different from the AA group (SNK test; $P > 0.05$). A highly significantly lower mean prevalence (SNK test; $P < 0.001$) was observed in *C. gigas* progeny (GG; 23%) compared to the AA, AG and GA groups (Fig. 1A). The number of *M. ostreae* per oyster in *C. angulata* progeny ranged from 1 to 13, and in both AG and GA hybrids the number of copepods ranged between 1 and 8. In *C. gigas* progeny the number of parasitic copepods per host ranged between 1 and 5. Significant differences in the mean intensity were observed among groups ($F_{(3,12)} = 11.1$, $P < 0.001$). Pair-wise comparisons

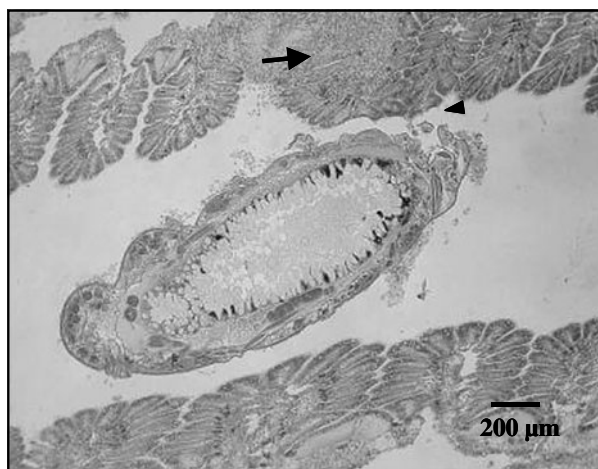


Fig. 2. A section of the gills of *Crassostrea angulata* showing a *Myicola ostreae* attached to gills (arrowhead) and haemocyte infiltration near that region (arrow). Haematoxylin-eosin staining.

revealed no significant differences in intensity between the AA, AG and GA groups (SNK test, $P > 0.05$). However, the infestation intensity was significantly lower (SNK test, $P < 0.05$) in *C. gigas* in comparison with the other groups (Fig. 1B).

The area in the gills where *M. ostreae* was attached had a yellow/green aureole which could be associated with a haemocyte infiltration. Histological examination revealed copepods in the gills that were interpreted as being *M. ostreae* based on the macroscopic observations. Occasionally, haemocytic infiltrations and gill lesions were observed near the region where the copepods were attached and tissue debris was observed surrounding the copepods (Fig. 2). Some *M. ostreae* attached to the gills of *C. gigas* specimens (in ca. 20% of the individuals analysed) were involved by a massive agglomerate of haemocyte-like cells (Fig. 3). The external part of this formation was covered by a thin layer of fibroblast-like cells, similar to a capsule. No fibres were observed in the agglomerate of cells surrounding the copepods. This encapsulation response was only observed in *C. gigas* individuals.

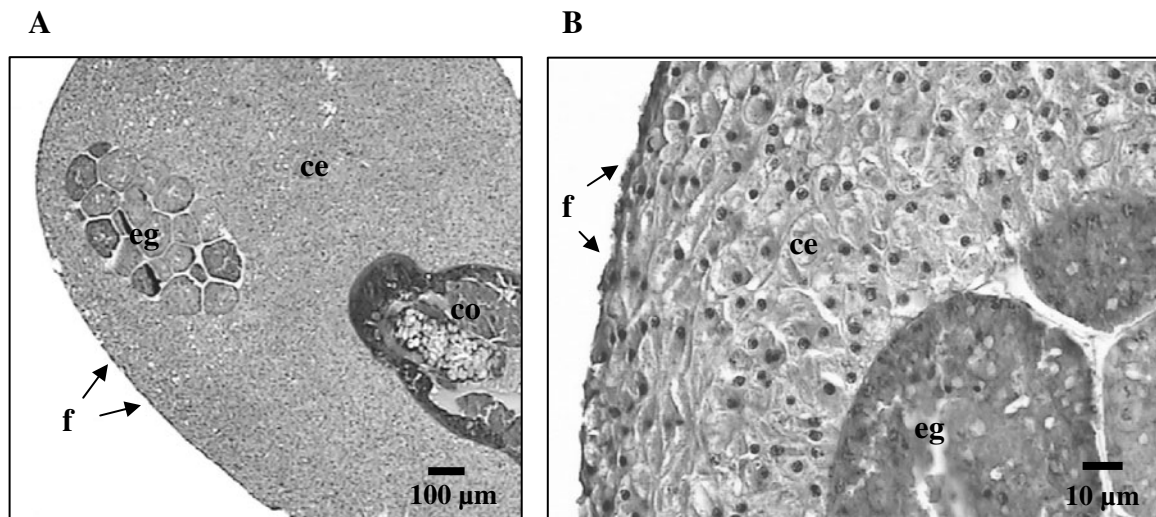


Fig. 3. A section of (A) an adult female of *Myicola ostreae* observed in the gills of *Crassostrea gigas* involved with haemocyte-like cells, and (B) magnification of the cells surrounding the copepod. co, *M. ostreae*; eg, copepod eggs; ce, haemocyte-like cells; f, cell-like wall. Haematoxylin-eosin staining.

The shell dry weight (DSW) was significantly different among groups ($F_{(3,12)} = 52.7$, $P < 0.001$). The DSW of the GG group was significantly higher (SNK test; $P < 0.01$) than the AA and AG groups, but not from the GA group (Fig. 4). The DSW of the AA group was significantly lower than the AG, GA and GG groups (SNK test; $P < 0.01$). No significant differences were observed between the AG and GA groups (SNK test; $P > 0.05$).

DISCUSSION

A higher prevalence and intensity of *M. ostreae* was observed in *C. angulata* than in *C. gigas*. We also reported that F1 *C. angulata* × *C. gigas* reciprocal hybrids had a pattern of susceptibility to *M. ostreae* that resembled the susceptible parent, which constitutes the first example to date of such a type of response (dominance for susceptibility) on hybrid animals (Fritz *et al.* 1999; Wolinska *et al.* 2007). A putative defence mechanism, involving the encapsulation of the parasitic copepods at the gill surface, was only observed in *C. gigas* individuals. These results lead us to hypothesize that the differential susceptibility to *M. ostreae* between *C. angulata* and *C. gigas* may be ascribed to host defence factors.

Parasite level in *C. angulata* and *C. gigas*

The prevalence of *M. ostreae* in *C. gigas* observed in the present study (23%) was similar to that observed by Hoshina and Sugiura (1953), of 10–30%, and within the interval reported by His (1979) of 4–40%. We also observed an infestation intensity in *C. gigas* similar to that reported by His (1979) of 1 to 4 copepods per host. This suggests that the parasite levels observed in the Cacela-Velha site were within

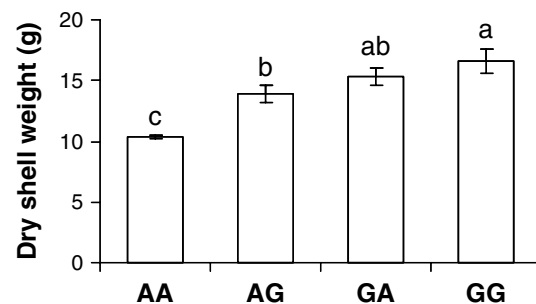


Fig. 4. Mean dry shell weight of *Crassostrea angulata* (AA), *C. gigas* (GG) and their reciprocal hybrids (AG and GA). The error bars represent the standard deviation ($n=4$). Groups with different letters are significantly different (SNK test, $P < 0.05$).

the values previously observed in *C. gigas*. However, parasite levels observed in *C. angulata* were significantly higher than in *C. gigas*. Since there are no published studies about the prevalence and intensity of *M. ostreae* in *C. angulata* it is not possible to assess whether the levels observed were abnormally high for this species or not.

Although the infestation mechanism of *M. ostreae* is not known, it may be assumed that it is similar to that observed in other parasitic copepods of bivalves in which a free-swimming copepodid enters the host by the inhalant current (Gee and Davey, 1986). The infestation success is therefore generally associated with the amount of water filtered by the host and consequently by its size and age. At the end of the experiment, the dry shell weight of *C. gigas* individuals was significantly higher than *C. angulata* individuals (Fig. 4). Furthermore, it was shown that the mean filtration rate in *C. gigas* is equal or higher to that in *C. angulata* (His, 1972; Haure *et al.* 2003). Hence, the higher parasite level observed in

C. angulata when compared with *C. gigas* is unlikely to be due to differences in size and/or filtration rate. A possible explanation for the observed higher parasite level in *C. angulata* is that European populations of this taxon have not been in contact with *M. ostreae* since it was introduced into Europe from Asia (O'Foighil *et al.* 1998), and hence they could be seen as a naive host. Indeed, *M. ostreae* was not observed in Taiwan (Lin and Ho, 1999) where *C. angulata* is known to be present and from where *C. angulata* is presumed to have been introduced into Europe (Boudry *et al.* 1998).

Parasite level in hybrids

Several studies have been conducted on parasitism of plant and animal hybrids (Fritz *et al.* 1999; Mouliia, 1999; Wolinska *et al.* 2007). Different patterns have been observed which imply different genetic mechanisms. Hybrids can be more susceptible (hybrid susceptibility pattern) or more resistance (hybrid resistance pattern) to parasites compared to parental taxa. Moreover, hybrids may resemble one of the parental taxa in resistance characteristic (dominance pattern). For this pattern, two different scenarios can be observed: (1) hybrids may resemble the susceptible parent (dominance for susceptibility); or (2) hybrids may resemble the resistant parent (dominance for resistance). Parasite levels in hybrids can also be intermediate between parental taxa (additive pattern). It seems that the hybrid susceptibility pattern is the most common one in animal hybrids and that the dominance pattern is the most unusual one (Fritz *et al.* 1999). In the present study, the parasite level of reciprocal *C. angulata* × *C. gigas* F1 hybrids was similar to *C. angulata* but significantly higher than in *C. gigas*. These results suggest that susceptibility to *M. ostreae* is inherited as a dominant character in the F1 hybrids. To our knowledge all studies conducted with animal hybrids until present observed the dominance to resistant pattern (Fritz *et al.* 1999; Mouliia, 1999; Wolinska *et al.* 2007). On the contrary, the results of the present study support a hypothesis of dominantly inherited susceptible traits.

A study conducted with 2 closely related blue mussels revealed that susceptibility was related to a single parental genome (Coustau *et al.* 1991). It was observed that *Mytilus edulis* and introgressed individuals with a predominantly *M. edulis* genome were more susceptible to the trematode parasite *Proserhynchus squamatus* than *M. galloprovincialis*. Since the putative different type of hybrids sampled in the wild (i.e., F1s, F2s, back-crosses or later-generation hybrids) were pooled together this prevents a direct comparison with our results. Nevertheless, a similar pattern was observed in the present study in which individuals with *C. angulata* genes had a higher parasite level than pure *C. gigas*

individuals. One explanation for the lower parasite level observed in *C. gigas* in comparison with *C. angulata* and F1 hybrids might be that some host-specific factors required by *M. ostreae* are not present in *C. gigas*. Another explanation might be that putative anti-parasite factors produced by *C. gigas* are silenced or reduced in the hybrids leading to the higher parasite levels observed in the present study.

Effect on host and host response

In the present study, gill lesions and yellow/green aureoles were observed in the regions where *M. ostreae* copepods were attached. Comps (1972) also reported gill lesions and yellowish aureoles in the regions of attachment of *M. ostreae* in *C. angulata* individuals. In some cases histological examination revealed heavy haemocytic infiltration in the gills most probably caused by copepods. The gill lesions caused by *M. ostreae* were apparently not severe. Although the gill lesions caused by *M. ostreae per se* apparently have little impact on the host, maybe they can reduce host fitness and/or allow the introduction of pathogens especially when infestation intensity is high. Indeed, it has recently been suggested that ectoparasites can immunosuppress their invertebrate host (Yang and Cox-Foster, 2005).

Phagocytosis and encapsulation are 2 major mechanisms of the cellular response in bivalve molluscs. Encapsulation is the mechanism by which haemocytes isolate or remove foreign intruders through the formation of a capsule-like envelope around them (Cheng and Rifkin, 1970). This host defence reaction is generally used against intruders that are too large to be phagocytosed. In the present study, single copepods were observed in the gills of *C. gigas* engulfed by a capsule-like structure composed by multiple cells but no fibres were observed. Five distinct types of encapsulation were described in bivalve molluscs in response to metazoan parasites by Cheng and Rifkin (1970). The encapsulation complex observed in the present study resembles the 'Leucocytic encapsulation' type described by Cheng and Rifkin (1970) that involves the aggregation of haemocytes to form a tunic surrounding the parasite.

Figueras *et al.* (1991) observed in *M. galloprovincialis* mussels an unidentified copepod buried in the peripheral connective tissue of the digestive gland producing a strong haemocytic encapsulation response. A similar response was observed by Cáceres-Martínez and Vásquez-Yeomans (1997) in *M. galloprovincialis* and *M. californianus* mussels described as a granuloma-like structure engulfing *Pseudomyicola spinosus* copepods in which haemocytes were involved. Copepods encapsulated by haemocytes were also observed in connective tissue surrounding the digestive gland of *M. galloprovincialis* (Olivas-Valdez and Cáceres-Martínez, 2002). The encapsulation response described in the

3 previous studies is similar to the one observed in the present study though the capsule-like structures were observed outside of oyster tissues at the gill surface. A similar host reaction was observed in the polychaete *Spirographis spallanzani* to the copepod *Sabelliphilus sarsi* (Carton, 1967). Carton observed that the copepods were engulfed by an exudate of blood and coelomic cells leading to a reduction in the number of copepods infesting *S. spallanzani*. Other studies have also reported large differences in the encapsulation response between closely related taxa (Knopf and Mahnke, 2004; Prévost *et al.* 2005).

The lower prevalence and intensity of *M. ostreae* observed in *C. gigas* than in *C. angulata* together with the observation of copepod encapsulation only in *C. gigas* lead us to hypothesize that the differential susceptibility to *M. ostreae* between the two oyster taxa may be ascribed to host defence factors. However, it remains unclear if, and how, the encapsulation response observed in *C. gigas* can eliminate adults of *M. ostreae*. Further insights into the putative cellular host response of *C. gigas* and *C. angulata* to *M. ostreae*, might be obtained by experimental infestation studies. It is known that resistance of parental taxa and hybrids to parasites may be influenced by genetic and environmental factors as well as by the physiological condition and age of the host (Fritz *et al.* 1999). In the present study, the effects of these confounding factors were minimized since all animals were of the same age, were grown under identical conditions, were naturally infested by the parasite and the genetic status of the hybrids was known.

We thank Maurício Teixeira for his excellent assistance in maintaining spat in the nursery and progeny groups in the field. We also thank two anonymous referees for their comments that helped to improve a previous version of the manuscript. This work was made possible by an FCT grant (SFRH/BD/8972/2002) and an E.U. Marie Curie Training fellowship (PLUDAMOR, QLK5-CT-2000-60036) to F.M.B.

REFERENCES

- Batista, F. M., Ben-Hamadou, R., Fonseca, V. G., Taris, N., Ruano, F., Reis-Henriques, M. A. and Boudry, P.** (2008). Comparative study of shell shape and muscle scar pigmentation in the closely related cupped oysters *Crassostrea angulata*, *C. gigas* and their reciprocal hybrids. *Aquatic Living Resources* **21**, 31–38.
- Batista, F. M., Leitão, A., Fonseca, V. G., Ben-Hamadou, R., Ruano, F., Henriques, M. A., Guedes-Pinto, H. and Boudry, P.** (2007). Individual relationship between aneuploidy of gill cells and growth rate in the cupped oysters *Crassostrea angulata*, *C. gigas* and their reciprocal hybrids. *Journal of Experimental Marine Biology and Ecology* **352**, 226–233.
- Boudry, P., Heurtebise, S., Collet, B., Cornette, F. and Gérard, A.** (1998). Differentiation between populations of the Portuguese oyster, *Crassostrea angulata* (Lamarck) and the Pacific oyster, *Crassostrea gigas* (Thunberg) revealed by mtDNA RFLP analysis. *Journal of Experimental Marine Biology and Ecology* **226**, 279–291.
- Buroker, N. E., Hershberger, W. K. and Chew, K. K.** (1979). Population genetics of the family Ostreidae. I. Intraspecific studies of *Crassostrea gigas* and *Saccostrea commercialis*. *Marine Biology* **54**, 157–169.
- Cáceres-Martínez, C. and Vásquez-Yeomans, R.** (1997). Presence and histopathological effects of the copepod *Pseudomyicola spinosus* in *Mytilus galloprovincialis* and *Mytilus californianus*. *Journal of Invertebrate Pathology* **70**, 150–155.
- Carton, Y.** (1967). Spécificité parasitaire de *Sabelliphilus sarsi*, parasite de *Spirographis spallanzani*. 2. Réactions histologiques des hôtes lors des contaminations expérimentales. *Archives de Zoologie Expérimentale et Générale* **108**, 387–411.
- Cheng, T. C. and Rifkin, E.** (1970). Cellular reactions in marine molluscs in response to helminth parasitism. In *A Symposium on Diseases of Fishes and Shellfishes*, Special Publication 5 (ed. Snieszko, S. F.), pp. 443–496. American Fisheries Society, Washington, DC, USA.
- Comps, M.** (1972). Sur un copépode parasite de l'huître portugaise (*Crassostrea angulata* Lmk) dans le Bassin de Marennes-Oléron. *Conseil International Exploration Mer, Com. Crustacés, Coquilles Benthiques* CM 1972, K 35.
- Coustau, C., Renaud, F., Maillard, C., Pasteur, N. and Delay, B.** (1991). Differential susceptibility to a trematode parasite among genotypes of the *Mytilus edulis/galloprovincialis* complex. *Genetical Research* **57**, 207–212.
- Figueras, A. J., Jardon, C. F. and Caldas, J. R.** (1991). Diseases and parasites of rafted mussels (*Mytilus galloprovincialis* Lmk): Preliminary results. *Aquaculture* **99**, 17–33.
- Fritz, R. S., Moulia, C. and Newcombe, G.** (1999). Resistance of hybrid plants and animals to herbivores, pathogens, and parasites. *Annual Review of Ecology and Systematics* **30**, 565–591.
- Gee, J. M. and Davey, J. T.** (1986). Experimental studies on the infestation of *Mytilus edulis* (L.) by *Mytilicola intestinalis* Steuer (Copepoda, Cyclopoida). *ICES Journal of Marine Science* **42**, 265–271.
- Grizel, H. and Héral, M.** (1991). Introduction into France of the Japanese oyster (*Crassostrea gigas*). *ICES Journal of Marine Science* **47**, 399–403.
- Haure, J., Huvet, A., Palvadeau, H., Nourry, M., Penisson, C., Martin, J. L. Y. and Boudry, P.** (2003). Feeding and respiratory time activities in the cupped oysters *Crassostrea gigas*, *Crassostrea angulata* and their hybrids. *Aquaculture* **218**, 539–551.
- His, E.** (1972). Premiers éléments de comparaison entre l'huître portugaise et l'huître japonaise. *Science et Pêche. Bulletin de l'Institut des Pêches Maritimes* **219**, 1–9.
- His, E.** (1979). Mytilicolides et Mycolides parasites des lamellibranches d'intérêt commercial du Bassin d'Arcachon. *Haliotis* **8**, 99–102.
- Ho, J.-S. and Zheng, G.-X.** (1994). *Ostrincola koe* (Copepoda, Mycolidae) and mass mortality of cultured hard clam (*Meretrix meretrix*) in China. *Hydrobiologia* **284**, 169–173.

- Ho, J.-S.** (2000). Mycoid copepods parasitic in bivalves of Asia. *National Taiwan Museum Special Publication Series* **10**, 75–85.
- Ho, J.-S.** (2001). Why do symbiotic copepods matter? *Hydrobiologia* **453/454**, 1–7.
- Hoshina, T. and Sugiura, Y.** (1953). On two new species of parasitic copepods of mollusks. *Journal of the Tokyo University of Fisheries* **40**, 25–33.
- Humes, A. G.** (1994). How many copepods? *Hydrobiologia* **292/293**, 1–7.
- Huvet, A., Lapègue, S., Magoulas, A. and Boudry, P.** (2000). Mitochondrial and nuclear DNA phylogeography of *Crassostrea angulata*, the Portuguese oyster endangered in Europe. *Conservation Genetics* **1**, 251–262.
- Huvet, A., Balabaud, K., Bierne, N. and Boudry, P.** (2001). Microsatellite analysis of 6-hour-old embryos reveals no preferential intra-specific fertilization between cupped oysters *Crassostrea gigas* and *Crassostrea angulata*. *Marine Biotechnology* **3**, 448–453.
- Huvet, A., Gérard, A., Ledu, C., Phélipot, P., Heurtebise, S. and Boudry, P.** (2002). Is fertility of hybrids enough to conclude that the two oysters *Crassostrea gigas* and *Crassostrea angulata* are the same species? *Aquatic Living Resources* **15**, 45–52.
- Huvet, A., Fabioux, C., McCombie, H., Lapègue, S. and Boudry, P.** (2004). Natural hybridization between genetically differential populations of *Crassostrea gigas* and *C. angulata* highlighted by sequence variation in flanking regions of a microsatellite locus. *Marine Ecology Progress Series* **272**, 141–152.
- Kabata, Z.** (1981). Copepoda (Crustacea) parasitic on fishes: problems and perspectives. *Advances in Parasitology* **19**, 1–71.
- Kim, I. H.** (2004). Poecilostomatoid copepods associated with bivalves in Korea and their distribution. *Zoological Studies* **43**, 187–192.
- Knopf, K. and Mahnke, M.** (2004). Differences in susceptibility of the European eel (*Anguilla anguilla*) and the Japanese eel (*Anguilla japonica*) to the swim-bladder nematode *Anguillicola crassus*. *Parasitology* **129**, 491–496.
- Lauckner, G.** (1983). Diseases of Mollusca: Bivalvia. In *Diseases of Marine Animals*, Vol. 2 (ed. Kinne, O.), pp. 477–961. Biologische Anstalt Helgoland, Hamburg, Germany.
- Leitão, A., Chaves, R., Santos, S., Guedes-Pinto, H. and Boudry, P.** (2007). Interspecific hybridization in oysters: restriction enzyme digestion chromosome banding confirms *Crassostrea angulata* × *Crassostrea gigas* F1 hybrids. *Journal of Experimental Marine Biology and Ecology* **343**, 253–260.
- Lin, C.-L. and Ho, J.-S.** (1999). Poecilostomatoid copepods parasitic in bivalve mollusks in Taiwan. *The Publication of the Seto Marine Biological Laboratory* **38**, 201–218.
- Menzel, R. W.** (1974). Portuguese and Japanese oysters are the same species. *Journal of the Fisheries Research Board of Canada* **31**, 453–456.
- Moullia, C.** (1999). Parasitism of plant and animal hybrids: are facts and fates the same? *Ecology* **80**, 392–406.
- O'Foighil, D., Gaffney, P. M., Wilbur, A. E. and Hilbish, T. J.** (1998). Mitochondrial cytochrome oxidase I gene sequences support an Asian origin for the Portuguese oyster *Crassostrea angulata*. *Marine Biology* **131**, 497–503.
- Olivas-Valdez, J. A. and Cáceres-Martínez, C.** (2002). Infestation of the blue mussel *Mytilus galloprovincialis* by the copepod *Pseudomyicola spinosus* and its relation to size, density, and condition index of the host. *Journal of Invertebrate Pathology* **79**, 65–71.
- Pike, A. W. and Wadsworth, S. L.** (1999). Sea lice on salmonids: their biology and control. *Advances in Parasitology* **44**, 233–337.
- Prévost, G., Eslina, P., Dourya, G., Moreaub, S. J. M. and Guillota, S.** (2005). Asobara, braconid parasitoids of *Drosophila* larvae: unusual strategies to avoid encapsulation without VLPs. *Journal of Insect Physiology* **51**, 171–179.
- Ruesink, J. L., Lenihan, H. S., Trimble, A. C., Heiman, K. W., Micheli, F., Byers, J. E. and Kay, M. C.** (2005). Introduction of non-native oysters: Ecosystem effects and restoration implications. *Annual Review of Ecology, Evolution, and Systematics* **36**, 643–689.
- Streftaris, N., Zenetos, A. and Papatthanassiou, E.** (2005). Globalisation in marine ecosystems: the story of non-indigenous marine species across European seas. *Oceanography and Marine Biology* **43**, 419–453.
- Yang, X. and Cox-Foster, D. L.** (2005). Impact of an ectoparasite on the immunity and pathology of an invertebrate: evidence for host immunosuppression and viral amplification. *Proceedings of the National Academy of Sciences, USA* **102**, 7470–7475.
- Wolinska, J., Lively, C. M. and Spaak, P.** (2007). Parasites in hybridizing communities: the Red Queen again? *Trends in Parasitology* **24**, 121–126.