

Contents

- A21 Editorial Board
A23 Highlights of this issue

Editorial

- 447 **Physician heal thyself (Luke 4:23)**
J. Hacker Hughes, A. S. Rao, N. Dosanjh, E. Cohen-Tovée,
J. Clarke and G. Bhutani

In debate

- 449 **We should replace conventional mental health law with capacity-based law**
G. Szmukler/B. D. Kelly

Review articles

- 454 **Relationship between childhood adversity and bipolar affective disorder: systematic review and meta-analysis**
J. E. Palmier-Claus, K. Berry, S. Bucci, W. Mansell and F. Varese
- 460 **Effect of psychotherapy for depression on quality of life: meta-analysis**
S. Kolovos, A. Kleiboer and P. Cuijpers
- 469 **Effectiveness of interventions for adults with mild to moderate intellectual disabilities and mental health problems: systematic review and meta-analysis**
N. Koslowski, K. Klein, K. Arnold, M. Kösters, M. Schützwohl,
H. J. Salize and B. Puschner

Papers

- 475 **Heritable temperament pathways to early callous-unemotional behaviour**
R. Waller, C. J. Trentacosta, D. S. Shaw, J. M. Neiderhiser,
J. M. Ganiban, D. Reiss, L. D. Leve and L. W. Hyde

- 483 **Pathways to sympathies for violent protest and terrorism**
K. Bhui, M. J. Silva, R. A. Topciu and E. Jones

- 490 **Natasha Rostova: a spiritual recovery from depression in *War and Peace* – psychiatry in literature**
Hannah Marcarian, Paul O. Wilkinson

- 491 **Extremism, religion and psychiatric morbidity in a population-based sample of young men**
J. W. Coid, K. Bhui, D. MacManus, C. Kallis, P. Bebbington
and S. Ullrich

- 497 **Statutory power – poems by doctors**
Jo McFarlane

- 498 **Epidemiology of autism in adults across age groups and ability levels**
T. S. Brugha, N. Spiers, J. Bankart, S.-A. Cooper, S. McManus,
F. J. Scott, J. Smith and F. Tyrer

- 504 **Association of anticholinergic burden with adverse effects in older people with intellectual disabilities: an observational cross-sectional study**
M. O'Dwyer, I. D. Maidment, K. Bennett, J. Peklar, N. Mulryan,
P. McCallion, M. McCarron and M. C. Henman

- 511 **Mediation analysis of severity of needs, service performance and outcomes for patients with mental disorders**
P. Roux, C. Passerieux and M.-J. Fleury

- 517 **Training to enhance psychiatrist communication with patients with psychosis (TEMPO): cluster randomised controlled trial**
R. McCabe, P. John, J. Dooley, P. Healey, A. Cushing,
D. Kingdon, S. Bremner and S. Priebe

- 524 **'The Maudsley at War' exhibition at the RCPsych London**
Itoro Udo

Short report

- 525 **Neuroinflammatory and morphological changes in late-life depression: the NIMROD study**
L. Su, Y. O. Faluyi, Y. T. Hong, T. D. Fryer, E. Mak, S. Gabel,
L. Hayes, S. Soteriades, G. B. Williams, R. Arnold, L. Passamonti,
P. Vázquez Rodríguez, A. Surendranathan, R. W. Bevan-Jones,
J. Coles, F. Aigbirhio, J. B. Rowe and J. T. O'Brien

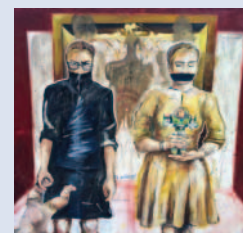
Columns

- 527 Correspondence
530 Book reviews
532 Contents of the *American Journal of Psychiatry*
532 Contents of *BJPsych Advances*
533 Kaleidoscope
535 From the Editor's desk

Cover picture

Heroes vs Villains (2000).
Lisa Biles (b. 1977)

Lisa has been drawing and painting for most of her life, but started taking it seriously when she studied art at school. She went on to achieve a Fine Art degree at Buckinghamshire Chilterns University College. Lisa writes: 'For me, my art is the only form of communication I feel comfortable with. Having suffered from anorexia nervosa, I have constantly found it difficult to communicate with society. I chose to isolate myself and create my own world where I become powerful, victorious and in control. The two figures in this piece represent the good and evil/positive and negative, the Yin and Yang battles within one's mind. The vulnerability of the uncared for doll contrasts with the worshipping of the false hero and the misplaced belief that the hero will protect'.



We are always looking for interesting and visually appealing images for the cover of the *Journal* and would welcome suggestions or pictures, which should be sent to Dr Allan Beveridge, British Journal of Psychiatry, 21 Prescot Street, London E1 8BB, UK or bjp@rcpsych.ac.uk.