

Access  
leading  
journals in  
your subject

# Cambridge Core

Explore today at [cambridge.org/core](https://www.cambridge.org/core)

Cambridge Core



## CONTENTS

### Nutrition

Ramos, M. A., Batista, S., Pires, M. A., Silva, A. P., Pereira, L. F., Saavedra, M. J., Ozório, R. O. A. and Rema, P.  
Dietary probiotic supplementation improves growth and the intestinal morphology of Nile tilapia 1259

Lessire, M., Gallo, V., Prato, M., Akide-Ndunge, O., Mandili, G., Marget, P., Arese, P. and Duc, G.  
Effects of faba beans with different concentrations of vicine and convicine on egg production, egg quality and red blood cells in laying hens 1270

Meyer, F., Jansen van Rensburg, C. and Gous, R. M.  
The response of weaned piglets to dietary valine and leucine 1279

Al-Mamun, M., Shibuya, K., Kajita, M., Tamura, Y. and Sano, H.  
Responses of plasma glucose metabolism to exogenous insulin infusion in sheep-fed forage herb plantain and exposed to heat 1287

Kazemi-Bonchenari, M., Salem, A. Z. M. and López, S.  
Influence of barley grain particle size and treatment with citric acid on digestibility, ruminal fermentation and microbial protein synthesis in Holstein calves 1295

Batista, E. D., Detmann, E., Valadares Filho, S. C., Titgemeyer, E. C. and Valadares, R. F. D.  
The effect of CP concentration in the diet on urea kinetics and microbial usage of recycled urea in cattle: a meta-analysis 1303

Gambin, P., Serrano, M. P., Gallego, L., García, A., Cappelli, J., Ceacero, F. and Landete-Castillejos, T.  
Does Cu supplementation affect the mechanical and structural properties and mineral content of red deer antler bone tissue? 1312

### Physiology and functional biology of systems

Carabús, A., Sainz, R. D., Oltjen, J. W., Gispert, M. and Font-i-Furnols, M.  
Growth of total fat and lean and of primal cuts is affected by the sex type 1321

Nohalez, A., Martínez, C. A., Reixach, J., Díaz, M., Vila, J., Colina, I., Parrilla, I., Vazquez, J. L., Roca, J., Gil, M. A., Rodríguez-Martínez, H., Martínez, E. A. and Cuello, C.  
Factors of importance when selecting sows as embryo donors 1330

### Behaviour, welfare and health

Declerck, I., Sarrazin, S., Dewulf, J. and Maes, D.  
Sow and piglet factors determining variation of colostrum intake between and within litters 1336

Brown-Brandt, T. M., Chitko-McKown, C. G., Eigenberg, R. A., Mayer, J. J., Welsh, T. H. Jr, Davis, J. D. and Purswell, J. L.  
Physiological responses of feedlot heifers provided access to different levels of shade 1344

Traoré, A., Notter, D. R., Soudre, A., Kaboré, A., Álvarez, I., Fernández, I., Sanou, M., Shamshuddin, M., Periasamy, K., Tamboura, H. H. and Goyache, F.  
Resistance to gastrointestinal parasite infection in Djallonké sheep 1354

### Farming systems and environment

Jurjanz, S., Collas, C., Lastel, M. L., Godard, X., Archimède, H., Rychen, G., Mahieu, M. and Feidt, C.  
Evaluation of soil intake by growing Creole young bulls in common grazing systems in humid tropical conditions 1363

Boulton, A. C., Rushton, J. and Wathes, D. C.  
An empirical analysis of the cost of rearing dairy heifers from birth to first calving and the time taken to repay these costs 1372

Ross, S. A., Topp, C. F. E., Ennos, R. A. and Chagunda, M. G. G.  
Relative emissions intensity of dairy production systems: employing different functional units in life-cycle assessment 1381

### Product quality, human health and well-being

Bonny, S. P. F., Hocquette, J.-F., Pethick, D. W., Legrand, I., Wierzbicki, J., Allen, P., Farmer, L. J., Polkinghorne, R. J. and Gardner, G. E.  
Untrained consumer assessment of the eating quality of beef: 1. A single composite score can predict beef quality grades 1389

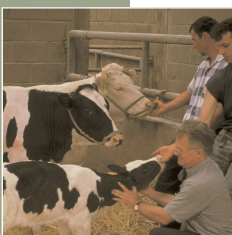
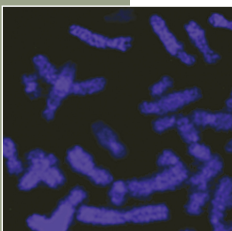
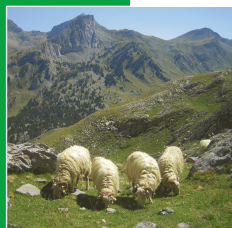
Bonny, S. P. F., Gardner, G. E., Pethick, D. W., Allen, P., Legrand, I., Wierzbicki, J., Farmer, L. J., Polkinghorne, R. J. and Hocquette, J.-F.  
Untrained consumer assessment of the eating quality of European beef: 2. Demographic factors have only minor effects on consumer scores and willingness to pay 1399

Konieczka, P., Rozbicka-Wieczorek, A. J., Czauderna, M. and Smulikowska, S.  
Beneficial effects of enrichment of chicken meat with n-3 polyunsaturated fatty acids, vitamin E and selenium on health parameters: a study on male rats 1412

Konieczka, P., Rozbicka-Wieczorek, A. J., Czauderna, M. and Smulikowska, S.  
Beneficial effects of enrichment of chicken meat with n-3 polyunsaturated fatty acids, vitamin E and selenium on health parameters: a study on male rats 1421

### Erratum

Konieczka, P., Rozbicka-Wieczorek, A. J., Czauderna, M. and Smulikowska, S.  
Beneficial effects of enrichment of chicken meat with n-3 polyunsaturated fatty acids, vitamin E and selenium on health parameters: a study on male rats 1421



Cambridge Core

For further information about this journal  
please go to the journal web site at:  
[cambridge.org/animal](http://cambridge.org/animal)



MIX  
Paper from  
responsible sources  
FSC® C007785

CAMBRIDGE  
UNIVERSITY PRESS