

Article

## Bringing planktonic crinoids back to the bottom: Reassessment of the functional role of scyphocrinoid loboliths

Przemysław Gorzelak , Dorota Kolbuk, Mariusz A. Salamon, Magdalena Łukowiak, William I. Ausich, and Tomasz K. Baumiller

**Abstract.**—Living crinoids are exclusively passive suspension feeders and benthic as adults. However, in the past they adapted to a broad range of ecological niches. For instance, the stratigraphically important middle Paleozoic scyphocrinoids are hypothesized to have been planktonic, employing their inferred gas-filled globular, chambered structure at the distal end of the stem, the so-called lobolith, as a buoyancy device with the crinoid calyx suspended below it. Here, we evaluate this hypothesis using evidence from skeletal micromorphology and theoretical biomechanical modeling. Lobolith walls are typically composed of ossicles, which are exclusively composed of constructional labyrinthine stereom. In plates from the distal side of the lobolith, this stereom extends into microperforate stereom layer, forming wavy ridges and spines. No microscale adaptations for preventing gas leaks and/or ingress of water (such as internal and external imperforate stereom layers) are known. Furthermore, theoretical calculations suggest that the scyphocrinoid tow-net mode of feeding would have resulted in small relative velocities between the towed filter and the ambient water, thus making it an ineffective passive filter feeder. We suggest that the lobolith of these crinoids acted as a modified holdfast rather than as a floating buoy. Its globular shape and distally positioned microspines served as adaptations for living in unconsolidated sediments, analogous to iceberg- and snowshoe-like strategies used by some mollusks and brachiopods. Like modern isocrinids, scyphocrinoids could have maintained an upright feeding posture by extending the distal portion of the stalk along the bottom. In this recumbent posture, the distal part of the stalk with the lobolith might have functioned as a drag anchor. As a consequence of the ~3-m-long stem, even with this posture, the benthic scyphocrinoids could have risen to the highest epifaunal tier in the Paleozoic.

Przemysław Gorzelak, Dorota Kolbuk, and Magdalena Łukowiak. *Institute of Paleobiology, Polish Academy of Sciences, Twarda 51/55, 00-818 Warsaw, Poland. E-mail: pgorzelak@twarda.pan.pl, kolbuk@gmail.com, mlukowiak@twarda.pan.pl*

Mariusz A. Salamon. *Department of Earth Sciences, University of Silesia in Katowice, Będzińska Street 60, 41–200 Sosnowiec, Poland. E-mail: paleo.crinoids@poczta.fm*

William I. Ausich. *School of Earth Sciences, Ohio State University, 125 South Oval Mall, Columbus, Ohio, U.S.A. E-mail: ausich.1@osu.edu*

Tomasz K. Baumiller. *Museum of Paleontology, University of Michigan, 1105 N University Avenue, Ann Arbor, Michigan, U.S.A. E-mail: tomaszb@umich.edu*

Accepted: 29 September 2019

### Introduction

There are many kinds of red herrings, misuses of history, untestable hypotheses, hypotheses that are accepted without test, concepts that persist out of context.—David K. Jacobs (1996: p. 614)

Although Recent crinoids are dominated by motile taxa displaying crawling and sometimes swimming abilities, they exclusively occupy benthic ecological niches (Macurda and Meyer 1974; Meyer and Macurda 1977, 1980;

Meyer et al. 1984; Baumiller and Messing 2007). In the geologic past, however, some taxa are thought to have been adapted to nektonic, planktonic, and pseudo-planktonic modes of life (Seilacher and Hauff 2004; Hess 2010; Hagdorn 2011). Notably, the most dramatic morphologic innovations and expansion into unexplored niches, considered as macro-evolutionary responses to increased benthic predation, occurred during the early Mesozoic (Baumiller et al. 2010; Gorzelak et al. 2012). However, a planktonic mode of life, although rare, is also thought to have characterized

some Paleozoic crinoids. One example are scyphocrinoids (Scyphocrinitidae sensu Jaekel 1918) (Fig. 1A). This stratigraphically important group of camerate crinoids is widely distributed in strata spanning the upper Silurian (Pridoli) to the Lower Devonian (Lochkovian) (e.g., Donovan and Lewis 2009; Valenzuela-Ríos and Liao 2012; Racki et al. 2012; Corrigan et al. 2014; Donovan and Miller 2014; Haude et al. 2014). Scyphocrinoids have a stem as long as 3 m, an ~10-cm-high calyx, with large interradial areas comprising fixed small plates and pinnules (for *Scyphocrinites* see Ubaghs 1978a: Fig. 292; for other closely related lobolith-bearing genera, such as *Marhoumacrinus*, *Carolicrinus*, and *Camarocrinus* see Hess 1999: Fig. 112; Haude et al. 2014: Fig. 8). The arms, as much as ~30 cm long, become free above the tertibrachials; the primibrachials and secundibrachials with their pinnules are all fixed in the calyx. Its most unusual morphologic feature, not observed in any other crinoid, is a large, typically ~10–20 cm in diameter (maximum recorded size ~30 cm), bulbous, chambered organ at the distal end of the stem, the so-called lobolith (Brett 1981). Two types of loboliths have been recognized: (1) the sub-spherical “cirrus loboliths,” with many unequal chambers made of numerous branching cirri (Fig. 1B); and (2) the assumed to be more advanced “plate loboliths,” with four to seven large chambers, that are outwardly open near the first bifurcation of a main cirrus within a characteristic collar area, a curved, bilaterally symmetric root trunk, and a simplified wall structure composed of two to three layers of thin plates (Fig. 1C) (for a detailed morphologic description, see Haude 1972).

Loboliths have been the subject of much controversy. They have been variously interpreted as: (1) representing another class of echinoderms (e.g., Barrande and Waagen 1887; Sun and Szetu 1947), (2) brood-pouches (Haeckel 1896; Jahn in Schuchert 1904), (3) genital organs (Jaekel 1904), (4) holdfasts (Springer 1917; Ray 1980; Brett 1984), (5) parasitic cysts induced by myzostomids (Haeckel 1896; Kirk 1911; Abel 1920; Ehrenberg 1926), and (6) buoyancy/floating organs (e.g., Hall 1879; Schuchert 1904; Bather 1907; Haude 1972, 1992; Hess 1999, 2010; Prokop and Petr 2001;

Seilacher and Hauff 2004; Haude et al. 2014). This last hypothesis implies that scyphocrinoids were planktonic and tow-net filtrators: their buoyant lobolith was moved along by currents, dragging along the crown, which was suspended below (Fig. 1A). Notably, this interpretation has been adopted in the last two editions of the *Treatise on Invertebrate Paleontology* (Ubaghs 1978b; Hess 2010).

Arguments used to support the planktonic hypothesis include: (1) functional macromorphology (e.g., bulbous shape and chambered structure of lobolith, long stem, and dense filtration fan), (2) taphonomy (e.g., wide geographic distribution of loboliths, which are typically found without the crown), (3) paradigm analysis (approximation to a mechanical paradigm, combined with recognition of an evolutionary trend from a cirrus lobolith to a plate lobolith, indicating increasing functional efficiency of lobolith), and (4) theoretical buoyancy calculations (for a review, see Hess 1999, 2010). However, although buoyancy of scyphocrinoids is indeed theoretically possible (as inferred from published buoyancy calculations), as we show in this paper, other arguments used to support the planktonic hypothesis are flawed and not persuasive.

Two different models for a planktonic mode of life have been suggested for scyphocrinoids. According to the first, widely accepted interpretation (e.g., Haude 1972, 1992; Hess 1999, 2010; Haude et al. 2014), a positively buoyant lobolith of scyphocrinoids passively drifted at the water's surface. A more elaborate hypothesis suggests that these crinoids were able to actively adjust their buoyancy, allowing them to float at any depth below the water's surface, taking advantage of an interface of two water bodies in a stratified sea (Seilacher and Hauff 2004).

A prerequisite for becoming planktonic is the development of a leak-tight buoyant structure and a gas-generating mechanism. After more than a century since the idea of scyphocrinoid lobolith as a floating organ was introduced, many questions remain regarding its development, form, and function. Perhaps the most germane is that “the generation of gas to fill the bulb [lobolith] has so far not been explained in a satisfactory way and the issue of whether it

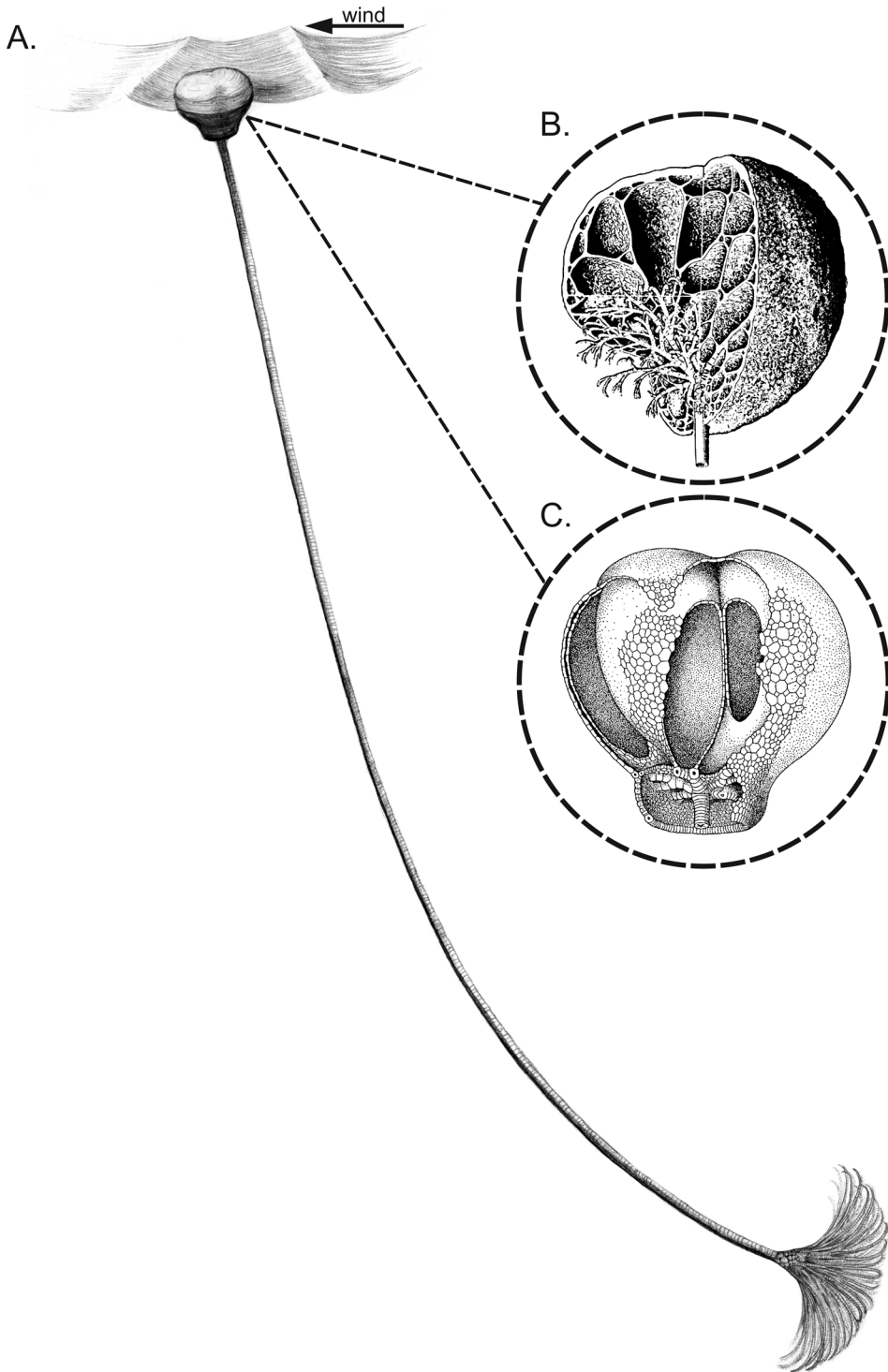


FIGURE 1. A, Example of traditional reconstruction of scyphocrinoid as a pelagic, floating crinoid along with reconstructions of cirrus (B) and plate (C) loboliths (B and C taken from Hess [2010] after Haude [1972] and Hess [1999]).

actually occurred appears unresolvable at present” (Hess 1999: p. 98). Here, we synthesize and critically evaluate previous arguments implying a planktonic mode of life of scyphocrinoids, provide new evidence from stereom microstructure and theoretical calculations that challenge that interpretation, and suggest that this enigmatic crinoid group was benthic.

### Materials and Methods

Eleven well-preserved loboliths (~3–15 cm in diameter) from three museum collections were

selected for microstructural analyses (Figs. 2–4). The specimens came from two regions. The majority of loboliths (six plate and two cirrus loboliths) are from the uppermost Silurian (Pri-doli) of the Tafalalt area near Erfoud, Morocco (collections of the Museum für Naturkunde Berlin, Leibniz Institut, and the Department of Earth Sciences, Laboratory of Palaeontology and Biostratigraphy, University of Silesia). Three plate loboliths are from the lowermost Devonian of Ada, Oklahoma, USA, with precise locality unknown (collections of the Orton Geological Museum, Ohio State University).

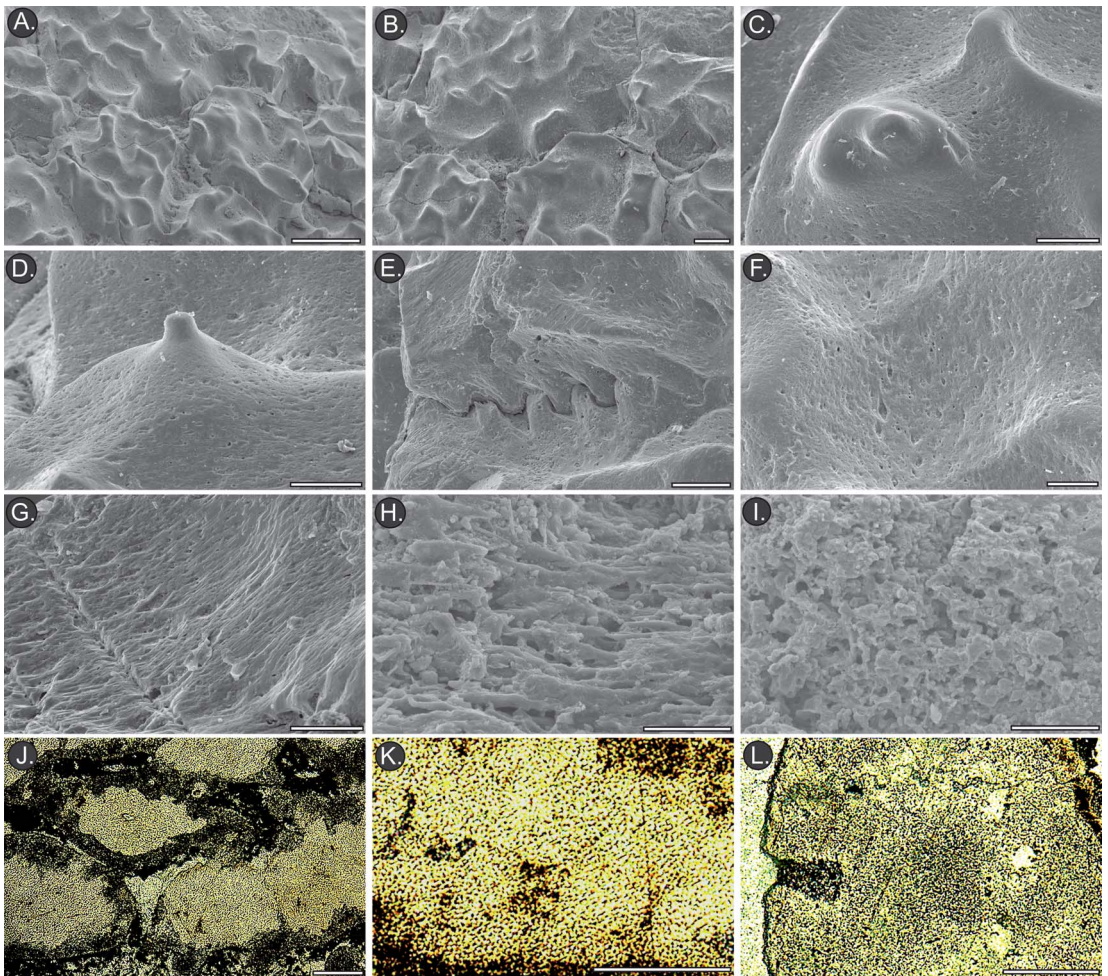


FIGURE 2. Microstructure of scyphocrinoid loboliths. A, B, Spiny ornamentation of distal plates from the outermost lobolith wall. C, D, Magnifications of spines. E, Suture line between two plates. F, Outermost microperforate stereom layer. G, H, Outermost microperforate fascicular-like stereom layer near the collar. I, Relicts of labyrinthine stereom inside plate. J, Three-layered loosely packed lobolith wall composed of plates displaying the homogenous labyrinthine microfabrics. K, External plates composed of coarse and dense labyrinthine stereom. L, External plates composed of coarse and dense labyrinthine stereom. A–I, SEM images. J–L, Optical microscope images, cross sections. Scale bars, 1 mm (A), 0.5 mm (B, J–L), 0.2 mm (C–E), 0.1 mm (F, G, I), 0.05 mm (H).

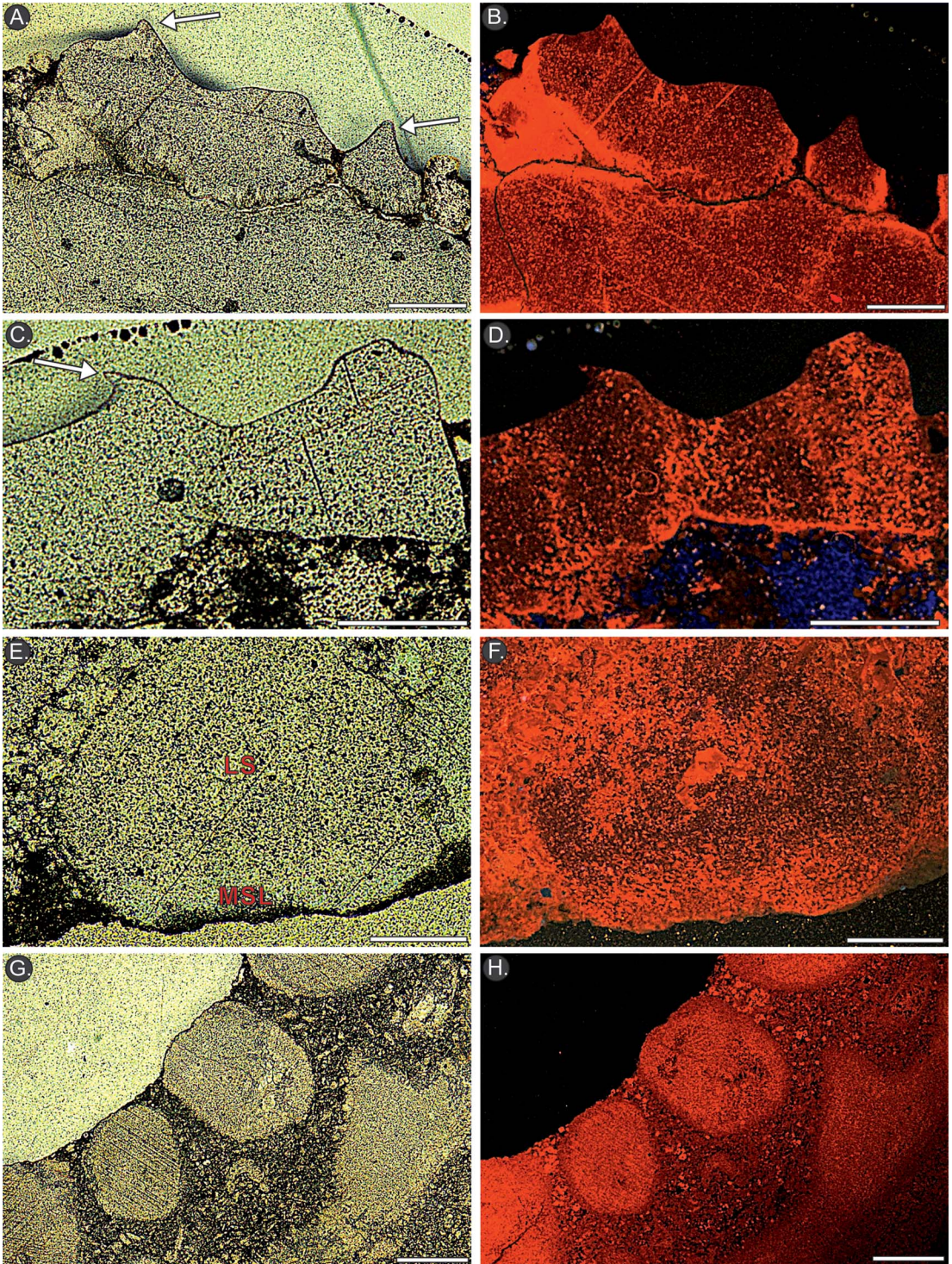


FIGURE 3. Microstructure of scyphocrinoid loboliths in cross sections under optical (A, C, E, G) and cathodoluminescence (B, D, F, H) microscopy. A, B, Two layers of plate lobolith composed of relicts of homogenous labyrinthine stereom. C, D, External lobolith wall revealing relicts of labyrinthine stereom. E, F, External plate composed of coarse labyrinthine stereom (LS) and outermost microperforate stereom layer (MSL). G, H, Cirrus-type lobolith wall composed of loosely packed cirri displaying relicts of homogenous coarse labyrinthine microfabrics. Arrows in A and C show the outermost lobolith spines composed of microperforate stereom layer. Scale bars, 0.5 mm.

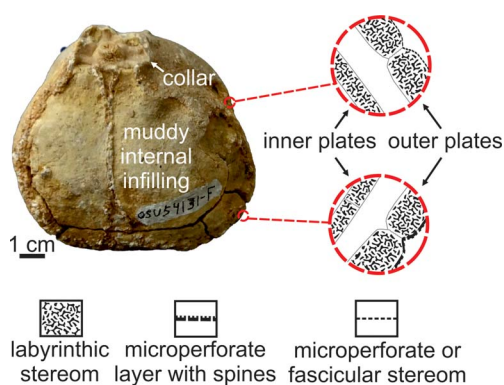


FIGURE 4. Distribution of stereom microstructure in scyphocrinoid loboliths.

The stereom microstructure of selected ossicles from different parts of the loboliths was investigated using a scanning electron microscope (SEM), a Philips XL-20 at the Institute of Paleobiology of the Polish Academy of Sciences in Warsaw. Additionally, 36 variously oriented thin sections, polished down to  $\sim 25 \mu\text{m}$  and coated with carbon, were examined under an optical cathodoluminescence (CL) microscope equipped with a hot cathode and a Kappa video camera at the Institute of Paleobiology of the Polish Academy of Sciences in Warsaw. The following parameters were used for CL microscopy: an electron energy = 14 keV and a beam current = 0.05–0.07 mA. Previous studies have proven that CL microscopy is especially useful in assessing diagenesis and also in revealing primary microstructural details of differently preserved echinoderm ossicles from a range of stratigraphic intervals and rock types (Gorzelaek and Zamora 2013, 2016; Gorzelaek et al. 2014, 2017; Gorzelaek 2018). Some quantitative data, such as thickness of trabecular bars and diameters of pores, were also obtained using ImageJ from CL microphotographs (30 measurements per each microstructurally distinct area).

The specimens, samples, and thin sections are housed at the Museum für Naturkunde Berlin, Leibniz Institut (acronyms: MB.E.11672, MB.E.11673, MB.E.11674), Department of Earth Sciences, Laboratory of Palaeontology and Stratigraphy, University of Silesia, Sosnowiec (acronyms: GIUS 2-3684-3688), and the Orton Geological Museum, Ohio State

University (acronyms: OSU54131-E, OSU54131-B, OSU54131-F).

The effectiveness of the hypothesized tow-net mode of feeding of scyphocrinoids was tested analytically and computationally using biomechanical principles (Figs. 5–7; see eqs. 1–7). The objective of the modeling approach presented herein is to determine a relative velocity of the crinoid filtration fan (i.e., velocity between the filtration fan and the ambient velocity through which the filtration fan was moving), as water movement past the filter is a necessary condition for filter feeding. This model considers the filtration fan and lobolith submerged within a moving fluid with some vertical velocity gradient (Fig. 6), such that the current at the lobolith (hence referred to as “current velocity”) is higher than at the filtration fan suspended below (hence referred to as “ambient velocity”). The lobolith, acted on by drag, pulls the filter, which due to its movement, experiences a retarding drag force in opposition to the drag acting on the lobolith. The filter thus acts in a fashion analogous to a sea anchor or a drogue, slowing down the lobolith. At equilibrium, the filter and lobolith must be moving at exactly the same absolute, steady velocity, and the drag forces on both lobolith and filter must be equal and opposite. In the model, the vertical forces include the downward force on the crown, equivalent to its weight in water, and an upward buoyancy force due to the buoyant lobolith. It is assumed that the buoyancy force is equal in magnitude to the downward force, such that the lobolith maintains a stable vertical position in the water column, whereas the vertical position of the filter below the lobolith is controlled by the angle of the stalk; the latter is determined by the balance of vertical and horizontal forces.

For given values of morphologic parameters, coefficients of drag of the lobolith and filter, current velocity, and vertical velocity gradient, the model allows one to solve for the “relative velocity” at the filter, that is, the difference between the absolute ambient velocity at the filter and the absolute velocity of the filter. This relative velocity is equivalent to the velocity of the fluid at the filter of a benthic, sessile crinoid and is the primary variable that determines

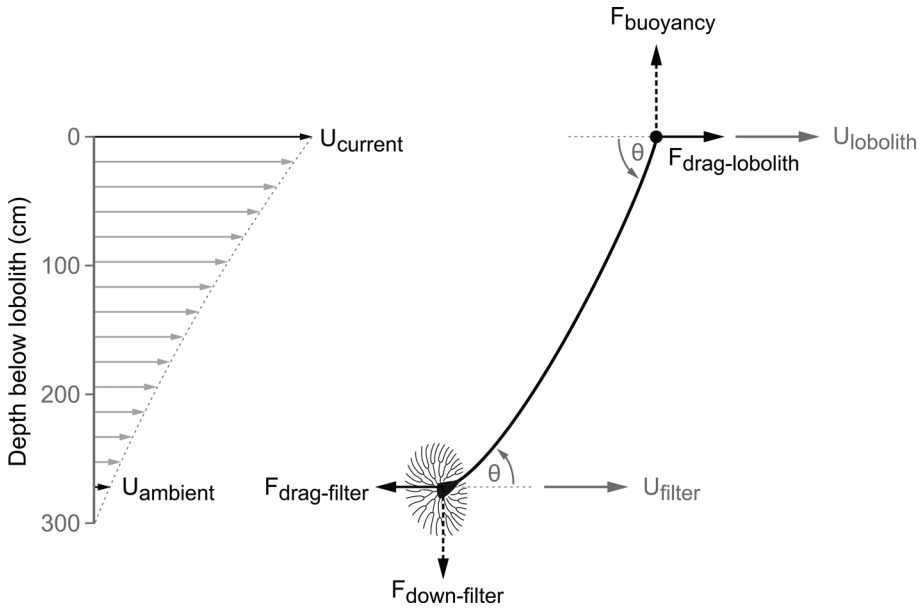


FIGURE 5. A schematic of a scyphocrinoid as a tow-net filtrator submerged in a fluid, flowing from left to right, with a vertical velocity gradient indicated by the arrows on the left. At equilibrium, with the sum of the vertical and horizontal forces (denoted by “F” with subscripts) equal 0, the scyphocrinoid is moving to the right with an absolute velocity  $U_{\text{filter}} (= U_{\text{lobolith}})$ . The drag force on the lobilith, acting to the right, is proportional to the lobilith’s relative velocity  $(U_{\text{current}} - U_{\text{lobolith}})^2$ , while an equal and opposite drag force acts on the filter and is proportional to its relative velocity  $(U_{\text{filter}} - U_{\text{ambient}})^2$ . The position of a filter relative to the lobilith expressed by the angle of its stalk relative to horizontal,  $\theta$ , is the inverse tangent of the ratio of the downward force on the filter to drag force on the filter ( $\theta = \arctan(F_{\text{down-filter}} / F_{\text{drag-filter}})$ ). For a detailed discussion of the variables and governing equations see “Materials and Methods.”

the rate of supply of particulate nutrients on which the crinoid feeds. It is important to emphasize that in the case where there is no velocity gradient, the absolute velocity of the lobilith and filter would be that of the current, and the resulting “relative velocity” would be 0.

The morphology of the lobilith was based on specimens described in the literature. For most dimensions of the calyx, arms, stalk, and lobilith, we relied on specimens described in Haude (1972) and Hess (1999).

We explored the sensitivity of the model to various values of realistic morphologic parameters, including the dimensions of arms, stalk, and lobilith; crinoid filter (proportion of area covered by filter elements, such as arms and pinnules); coefficients of drag of filter and lobilith; and velocity gradients (e.g., Kondo et al. 1979; Price et al. 1987; Schudlich and Price 1998). Numerical models were run over a broad range of current velocities (1 to 25  $\text{cm s}^{-1}$ ) that typically occur in Recent environments (e.g., Lumpkin and Johnson 2013). In

each run, the equilibrium stalk orientation, velocity of the filter, and ambient velocity at the filter were obtained.

The following set of governing equations was used in modeling scyphocrinoids as tow-net filtrators:

$$U_{\text{filter}} = U_{\text{lobolith}} \quad (1)$$

where  $U_{\text{filter}}$  is the absolute velocity of the filter, and  $U_{\text{lobolith}}$  is the absolute velocity of the lobilith.

$$F_{\text{drag-filter}} = F_{\text{drag-lobolith}} \quad (2)$$

where  $F_{\text{drag-filter}}$  is the drag on the filter, and  $F_{\text{drag-lobolith}}$  is the drag on the lobilith.

$$F_{\text{drag-filter}} = 1/2 C_{d_{\text{filter}}} \rho_{\text{fluid}} A_{\text{filter}} (U_{\text{filter}} - U_{\text{ambient}})^2 \quad (3)$$

where  $C_{d_{\text{filter}}}$  is the coefficient of drag of the filter (0.73: based on filter solidity, area occupied

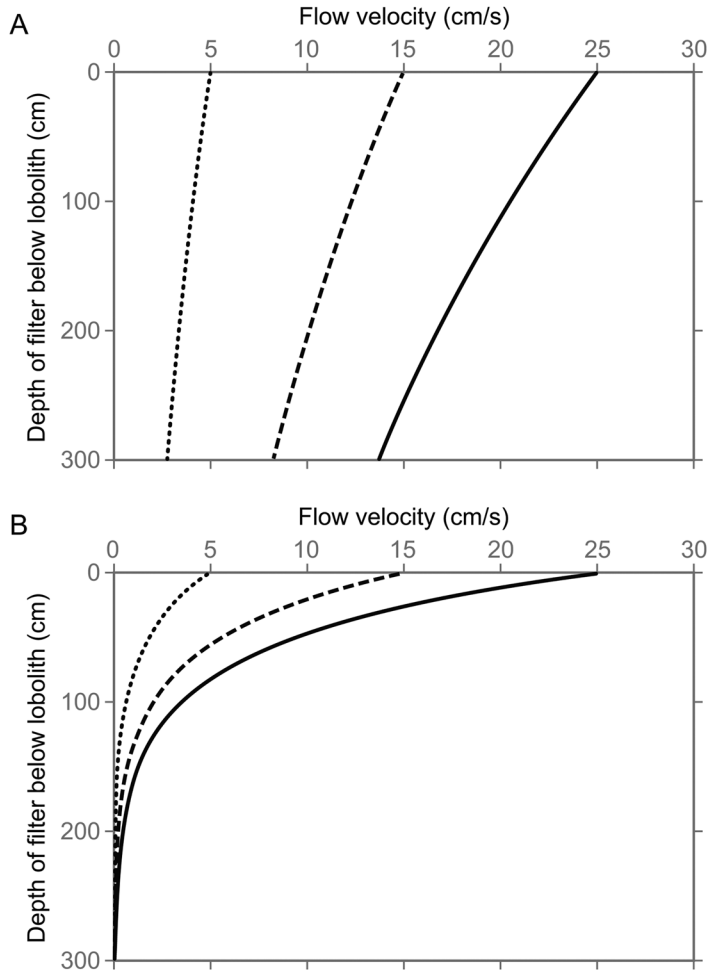


FIGURE 6. Two vertical velocity gradients used in modeling a scyphocrinoid as a tow-net filtrator: (A) gradual velocity gradient ( $k = -0.2$ ) and (B) steep velocity gradient ( $k = -2$ ). Three absolute current velocities at the lobolith are shown for each:  $25 \text{ cm s}^{-1}$ , solid line;  $15 \text{ cm s}^{-1}$ , dashed line;  $5 \text{ cm s}^{-1}$ , dotted line. For each of the profiles, as one descends downward from the lobolith, the ambient velocity decreases. The velocity profile is shown for only the topmost 3 m depth below the lobolith, as that is length of the stalk, and thus the deepest reach of a suspended crown of scyphocrinoid.

by fibers/total area, of 0.53, and empirical relationship between solidity and  $C_d$  in Hoerner [1965]),  $\rho_{\text{fluid}}$  is the density of the fluid ( $1024 \text{ kg m}^{-3}$ ),  $A_{\text{filter}}$  is the area of the filter perpendicular to its motion, and  $U_{\text{ambient}}$  is the absolute velocity of fluid at the filter; ( $U_{\text{filter}} - U_{\text{ambient}}$  represents the relative velocity of filter).

$$U_{\text{ambient}} = U_{\text{current}} \exp^{[kL \sin(\theta)]} \quad (4)$$

where  $k$  is a constant,  $L$  is stalk length (3 m), and

$\theta$  is the angle of the stalk relative to horizontal.

$$F_{\text{drag-lobolith}} = 1/2 C_d \rho_{\text{fluid}} A_{\text{lobolith}} (U_{\text{current}} - U_{\text{lobolith}})^2 \quad (5)$$

where  $C_{d_{\text{lobolith}}}$  is the coefficient of drag of the lobolith assumed to approximate that of a sphere (0.47; Vogel 1981: Fig. 6.5),  $A_{\text{lobolith}}$  is the cross-section of the spherical lobolith ( $= \pi (d/2)^2$ , where  $d$  is the lobolith diameter, 0.1 m or 0.2 m), and  $U_{\text{current}}$  is the absolute velocity



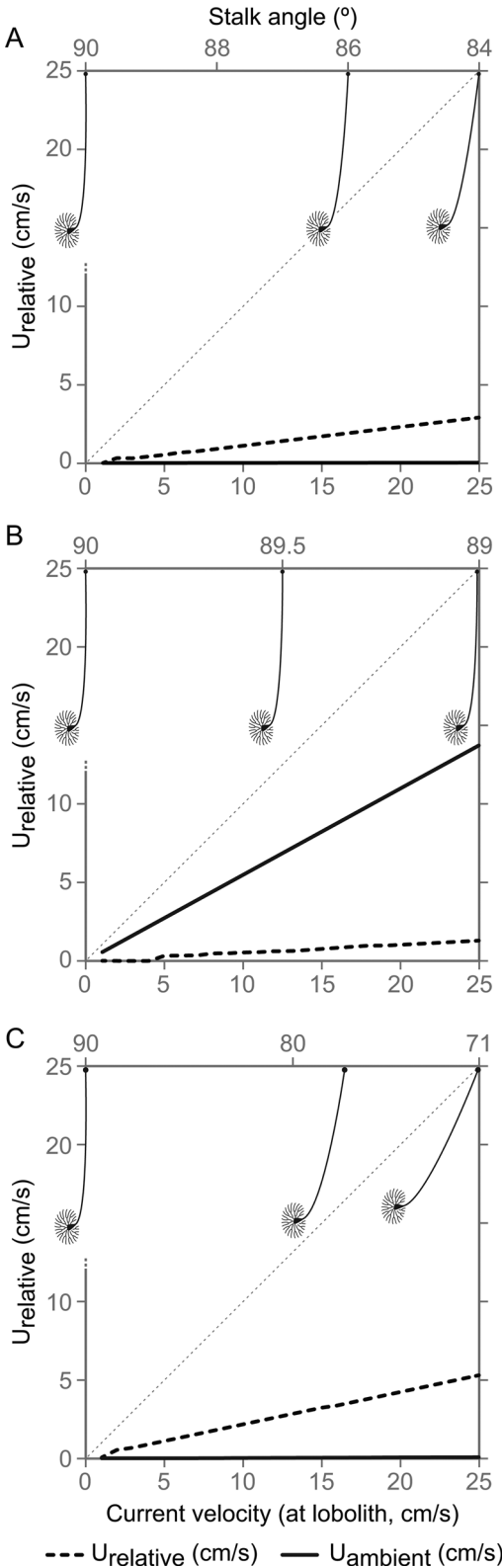


FIGURE 7. Effect of absolute current velocity at the lobolith on absolute ambient velocity at the filter (solid black line) and relative velocity at the filter (dashed black line) for a model of scyphocrinoids. The diagonal, dotted gray line (slope = 1) represents the absolute current velocity at the lobolith. In the model, the scyphocrinoid lobolith has a drag coefficient of 0.47, a 3-m-long stalk, and 0.6 m filter diameter with drag coefficient of 0.73. The density of scyphocrinoid skeletal material is 1360 kg m<sup>-3</sup>, and the lobolith is assumed to provide sufficient buoyancy to counter the crinoid's weight in water. The schematics along the horizontal axis at the top illustrate the angle of the stalk of scyphocrinoid at equilibrium for a range of absolute current velocities (1 to 25 cm s<sup>-1</sup>), with current direction left to right. A, Steep velocity gradient ( $k = -2$ ), lobolith diameter = 10 cm. B, Shallow velocity gradient ( $k = -0.2$ ), lobolith diameter = 10 cm. C, Steep velocity gradient ( $k = -2$ ), lobolith diameter = 20 cm. Note the magnitude of the relative velocity at the filter is approximately <10% of the absolute current velocity at the lobolith for the most realistic scenario (B) but increases with a steeper velocity gradient (A) or a larger lobolith (C).

of fluid at the lobolith.

$$F_{\text{down-filter}} = (V_{\text{crown}})(\rho_{\text{skeleton}} - \rho_{\text{fluid}})g \quad (6)$$

where  $F_{\text{down-filter}}$  is the downward force on the filter,  $V_{\text{crown}}$  is the volume of the skeletal elements of the crown estimated from dimensions of arms and calyx,  $\rho_{\text{skeleton}}$  is the density of crinoid skeletal elements (1360 kg m<sup>-3</sup>; Janevski and Baumiller 2010), and  $g$  is the gravitational constant (9.8 m s<sup>-2</sup>).

$$\tan(\theta) = F_{\text{down-filter}}/F_{\text{drag-filter}} \quad (7)$$

The equilibrium position of a filter relative to the lobolith expressed by the angle of its stalk relative to horizontal,  $\theta$ , at any given current velocity,  $U_{\text{current}}$  can be found numerically. This is done by calculating the velocities ( $U_{\text{ambient}}$ ,  $U_{\text{filter}}$ ,  $U_{\text{lobolith}}$ ) and forces ( $F_{\text{drag-filter}}$ ,  $F_{\text{drag-lobolith}}$ ) for a given current velocity,  $U_{\text{current}}$ , for stalk angles  $\theta$  between 0° and 90°. For a given current velocity,  $U_{\text{current}}$ , there is a unique angle  $\theta$ , at which all of the above equations are satisfied; this represents the equilibrium.

**Results**

*Micromorphology.*—Walls of cirrus and plate loboliths are composed of two to three layers

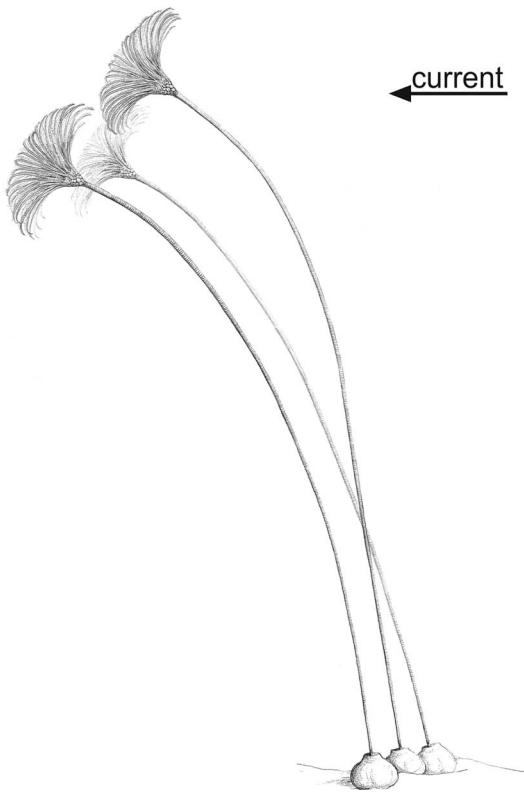


FIGURE 8. Reconstruction of scyphocrinoids as benthic crinoids with nearly vertical stalks.

of tiny ossicles (cylindrical spicules or polygonal plates, respectively), which are made of coarse, structural labyrinthic stereom (mean trabeculae thickness: 12  $\mu\text{m}$ ; mean pore diameter: 8  $\mu\text{m}$ ; Figs. 2–4). The lateral surface of distal plates from the outermost lobolith wall, however, is strongly ornamented by irregular micrometer-sized wavy ridges, spines, and keels (Figs. 2A–D, 3A–D, and 4). The outermost layer is composed of microperforate stereom, sometimes revealing a weak “en echelon” pattern of elliptical to lanceolate lumina (Figs. 2F, and 4). The lateral surface of proximal ossicles is unornamented and composed of poorly ordered labyrinthic to fascicular-like stereom (Figs. 2G, H, and 4; cf. Smith 1980).

*Biomechanical Modeling of Scyphocrinoid as Tow-Net Filtrator.*—The results of analyses for different scenarios are shown in Figure 7. Of these, the “standard” scenario is represented by Figure 7B. In the model, the scyphocrinoid

is assumed to have a 10 cm lobolith with a 0.47 drag coefficient, a 3-m-long stalk, and a 60 cm filter diameter with a drag coefficient of 0.73. The density of scyphocrinoid skeletal material is 1360  $\text{kg m}^{-3}$ , and the lobolith is assumed to provide sufficient buoyancy to counter the crinoid’s weight in water. More extreme scenarios are shown in Figure 7A and C: Figure 7A illustrates the effect of an extreme vertical velocity gradient (100% decrease over the 3 m length of the stalk), where the filtration fan is being towed through still water, and in Figure 7C, the scyphocrinoid is modeled with a large, 20-cm-diameter lobolith.

Results of the analysis with the “standard” parameter values for scyphocrinoids (Fig. 7B) show that the “relative velocity” of the filter is generally quite low (<10%) compared with the velocity of the current that the lobolith is experiencing. The relative velocity at the filter sets the upper limit on how much of the fluid (and particles in the fluid) directly upstream of the filter can be sampled by the filter; in actuality, the flux of particles will be lower than this value, as the resistivity (proportional to solidity) of the filter leads to some of the approaching fluid (and particles) diverging around the filter’s edges (Baumiller 1997).

A slightly higher relative velocity results when the filter is towed through still water, requiring an extremely steep velocity gradient (Fig. 6). Also, a higher relative velocity results when the lobolith is larger and experiences a larger force of drag (Fig. 7C). In this case, equilibrium (where the forces on the lobolith and the filter are equal and opposite) occurs when both the lobolith and the filter are moving at a greater velocity. The net result for the filtrator is that it moves faster relative to the ambient current, and thus it can “sample” more fluid. Nevertheless, even under such extreme scenarios, the relative velocity does not change dramatically.

## Discussion

*A Paradigm Approach of Lobolith as Float: Supposed Morphologic and Evolutionary Optimization.*—Haude (1972), in his functional interpretation of loboliths, applied Rudwick’s (1964) paradigm

approach by noting morphologic similarities between buoys and scyphocrinitid bulbous-chambered lobiliths, and he inferred a trend toward functional optimality (transition from cirrus to plate lobilith; but see below). The interpretation of the lobilith as a floating organ was also explored by Haude (1972, 1998) using theoretical buoyancy calculations of the presumed gas infillings. However, it has been generally recognized that the use of the paradigm approach to infer function of fossil organisms has its problems (e.g., Grant 1972, 1975; Signor 1982; Lauder 1995); and as stressed by Plotnick and Baumiller (2000: p. 305), it is best employed in “generating, rather than testing, functional hypotheses.” Indeed, a bulbous and chambered morphology of lobiliths, many of which reveal basal flattening (e.g., Hess 1999: Fig. 110; Peng 2001: Fig. 13; Lee 2005: Fig. 11; Haude et al. 2014: Figs. 4, 7c), is not a test of buoyancy, as this shape characterizes many benthic echinoderms, such as echinoids, whose tests are filled by coelomic fluid and are negatively buoyant.

Importantly, our microstructural data suggest that the walls of cirrus and plate lobiliths were not well protected against possible leaks of gas and/or ingress of water, which would be critical for a buoyancy device. In particular, there is no evidence of any adaptations that would reduce or prevent leakiness, such as internal and external imperforate stereom layers. Instead, the lobilith walls are almost entirely composed of coarse and open labyrinthic stereom, which locally (in the distal plates) extends into microperforate stereom layers, remarkably similar to those observed in fossil and living benthic crinoids (e.g., Simms 2001). Lack of imperforate stereom layers, both within the outer and inner lobilith walls, indicates that any perforation of the epidermis/dermis due to wave action, solar radiation, epibionts, and/or pathogens (a process commonly recorded in Recent echinoderms; see, e.g., Jangoux 1984; Scheibling 1984; Bauer and Young 2000) would result in a gas leak, ingress of water, and loss of any positive buoyance. Likewise, we found no microscale adaptation that might increase buoyancy (such as skeletal lightening and hollow microarchitecture). Additionally, it appears that ossicles forming plate lobiliths, and even more so

cirrus lobiliths, are not tightly packed: occasionally, open spaces in the plate or cirri network are visible (e.g., Figs. 2J and 3G,H; see also Haude 1972: Fig. 11E).

Haude (1992), as part of his argument, suggested a pathway of scyphocrinoid evolution. According to his scenario, scyphocrinoid ancestors had an open cirrus network and were rooted in a muddy sediment. Subsequently, their descendants evolved tight chambers within the cirrus network, enabling floating, and these were eventually transformed into large chambers of advanced plate lobiliths. However, this evolutionary scenario is not supported by available data: as noted by Hess (2010: p. 5) “this sequence, starting from a crinoid rooted at the bottom and ending as a pelagic lobilith, is purely conjectural.” Furthermore, the scenario is inconsistent with stratigraphic occurrence of scyphocrinoid lobiliths, as noted by Prokop and Petr (2001: p. 260): “there is no evidence supporting the speculation that stratigraphically lower levels yielded cirrus lobiliths.... while higher ones ... yielded plate lobiliths.” In fact, there is some evidence that both lobilith types evolved independently from different lineages within scyphocrinitids and marhoumacrinids (Prokop and Petr 1992).

*Supposed Adaptations to Tow-Net Filtration.*—A pseudo-planktonic mode of life is widely accepted for two Mesozoic crinoids preserved intimately associated with large driftwood, *Seirocrinus* and *Traumatocrinus*. These crinoids possess certain morphologic features thought to have been critical to the “tow-net filtrator” function (Seilacher and Hauff 2004). For example, the length of *Seirocrinus* and *Traumatocrinus* stalks is exceptional, reaching 20 and 11 m, respectively (e.g., Simms 1986; Hagdorn et al. 2007). With increasing stalk length, it would have been possible for the proximal, crown-bearing end and the distal, driftwood end of these crinoids to occupy fluids with different flow regimes and nutrient concentrations. Additionally, these crinoids would have had very large “tow nets,” given their long arms with many endotomous branches resulting in as many as 600 arm tips (Seilacher and Hauff 2004). In contrast, scyphocrinoid stalk length (up to ~3 m) is much shorter, and its arms branch isotomously, resulting in a

filtration fan having ~160 arm tips (Seilacher and Hauff 2004). Unlike the morphology of the stalk and arms of *Seirocrinus* and *Traumatocrinus*, the scyphocrinoid stalk and arms are typical of many benthic crinoids, both fossil, such as *Acanthocrinus*, *Aryballocrinus*, *Glyptocrinus*, and *Ptychocrinus* (Ubaghs 1978a), and living, such as *Endoxocrinus* and *Cenocrinus* (Macurda and Meyer 1974; Messing et al. 1990, 2007).

All of this suggests that compared with benthic crinoids, scyphocrinoid morphology was not that unusual, whereas it differed substantively from taxa generally thought to be planktonic/pseudoplanktonic. Furthermore, the biomechanical modeling calculations indicate that scyphocrinoids were not particularly well designed for tow-net filtration. Even when operating in high currents, the small size of the loboliths and their subspherical shape resulted in a drag force that could produce only a small relative velocity at the filter, roughly 10% of the current velocity, even assuming generously that the filtration fan was dragged through still water. The latter would require an unrealistically steep velocity gradient: 100% over the 3 m length of the stalk. From this perspective, the much longer stalks of *Seirocrinus* and *Traumatocrinus* and the fact they were towed by a “float” with a much larger surface area (driftwood), and thus drag, would greatly enhance their tow-net filtration properties. An analogy with a trawling method of fishing may help clarify the problem of scyphocrinoid as a tow-net filtrator: relative to *Seirocrinus* and *Traumatocrinus*, the scyphocrinoid crown would have been pulled through the water by an underpowered motor (small lobolith). Remarkably, loboliths have no specific adaptations in shape that would greatly enhance their drag (such as cubic or flat plate morphology).

Although the current biomechanical model does not include an analysis of particle capture rates or metabolic gains, as that would require modeling based on poorly constrained data on particle concentrations and size distributions, relative velocity is a parameter of first-order importance for such an analysis. So, while the results of the model do not preclude the possibility of scyphocrinoids as tow-net filtrators, they do suggest that simply “flipping” the model to the standard sessile stalked

crinoid posture (lobolith attached to bottom with filtration fan up) allows the filter to take full advantage of the ambient flow while keeping the lobolith safely in the boundary layer.

Hess (2010) speculated that floating scyphocrinoids might have been able to filter zooplankton, relying on the latter’s diurnal vertical migration. However, vertical migration speeds of zooplankton are typically very low (up to about few centimeters per second; see, e.g., Heywood 1996; Richards et al. 1996). Given the inconstant nature and low velocity of vertical migration of zooplankton (as compared with more stable and constant flow conditions and higher current velocities in the habitats of living benthic crinoids; see, e.g., Macurda and Meyer 1974; Roux 1980; Messing et al. 1990; Baumiller and Messing 2007), this mode of feeding of scyphocrinoids would have been cost-ineffective and is thus also highly improbable.

*Lobolith Development and Supposed Mechanisms of Gas Generation and Its Regulation.*—Perhaps the most controversial aspects of the planktonic scyphocrinoid hypothesis relate to lobolith development, mechanisms of gas generation in loboliths, and mechanisms of buoyancy adjustment. Within collars of plate loboliths, small roots of crinoids are commonly present (e.g., Haude 1992; Prokop and Petr 2001). It has been argued that these small roots represent either juvenile scyphocrinoids (Springer 1917; Prokop and Petr 2001) or sexual dimorphs of this taxon (Seilacher personal communication in Haude 1972). The latter would be unique among crinoids (Hess 2010). Strimple (1963) speculated that larvae of scyphocrinoids attached with roots to well-developed loboliths of mature specimens and then formed their loboliths after breaking off from the mature specimens. However, he failed to provide a mechanism. Others have suggested that juvenile scyphocrinoids were attached by their root cirri to algae drifting at the water’s surface (Haude 1992, 1998) and that gas might have accumulated by diffusion from the surrounding water (Haude 1972). Prokop and Petr (1992) and Haude et al. (2014) speculated that juvenile scyphocrinoids were attached to mature scyphocrinoid loboliths and entrapped epipelagic photosynthetic

algae during lobolith development. However, as noted by Hess (2010: p. 5): “It is hardly conceivable that a cirriferous radix attached to a larger lobolith could somehow turn into an independent lobolith, and no intermediate forms are known.”

The presence of encrusting organisms on mature loboliths, including juvenile scyphocrinoids, platyceratid gastropods, and bryozoans (e.g., Springer 1917; Haude 1972; Hess 1999), is noteworthy, because being “weighty,” they would have certainly affected the buoyancy of the adult scyphocrinoid “host.” These weighty encrusters imply that scyphocrinoids either had lots of excess buoyancy and thus floated on the surface or needed to evolve an active buoyancy compensation mechanism.

If scyphocrinoids were capable of being buoyed by loboliths, one of the scenarios assumes that the loboliths drifted passively at the water surface (Haude 1992, 1998). However, surface-floating loboliths would have been exposed to destructive solar radiation, wind, high-energy wave action, and storm events. Haude et al. (2014) suggested that loboliths might have been protected against sun, wind, and wave energy by forming a distal wall strengthened with pustules (e.g., Haude 1972: Fig. 11d, 1998: Fig. 4c). He also speculated that the distal sides of loboliths might have been encrusted by protective algae or bacteria absorbing solar radiation and that the outermost distal wall actually might have been free of stroma. However, evidence supporting any of this is entirely lacking. Furthermore, if the distal wall was free of stroma, a gas leak would have been even more likely (due to lack of imperforate stereom layers). Noteworthy, waves are expected to put stress also on the stalk as the lobolith is bounced up and down. Seilacher and Hauff (2004) attempted to solve the problems associated with a surface-floating loboliths by assuming that scyphocrinoids actively adjusted their buoyancy and lived below the surface. They speculated: “As a stiff capsule, the lobolith was unsuited for Cartesian diving, but its aperture made it possible to control the gas content so that buoyancy could be actively adjusted to a certain depth, as in a swim bladder” (pp. 8–9). More recently, however, Seilacher and Gishlick (2014)

advocated a Cartesian diver buoyancy compensation mechanism for these crinoids without providing any evidence. The possibility of active adjustment of buoyancy to a certain depth was refuted by Haude et al. (2014), because: (1) encrusting organisms are almost exclusively present on the proximal side of loboliths; and (2) this would require the evolution of a highly sophisticated and physiologically regulated mechanism for changing gas volume.

*Taphonomy and Distribution.*—Evidence from taphonomy has been commonly invoked in support of the planktonic lifestyle of scyphocrinoids. Specifically, it has been pointed out that loboliths may occur in different facies and are commonly not associated with scyphocrinoid crowns (e.g., Hess 1999). One explanation that has been offered for this pattern is that stalks of scyphocrinoids were easily broken off near the loboliths during storms, allowing nekroplanktonic dispersal of loboliths over long distances. Subsequently, waterlogged loboliths sank to the bottom, with their proximal part (with the collar) upward, like short-necked, water-filled bottles (Hess 2010).

However, there are several problems related to this taphonomic scenario. First, scyphocrinoids commonly occur in discrete lenses (Hess 1999). As stated by Hess (1999: p. 102): “A storm would not normally deposit floating animals neatly into lenses that thin out into clays or shales.” Second, loboliths cannot be directly compared with the short-necked bottles. Following the crinoid’s death and stalk detachment, rapid decay of soft tissues is expected to occur within the lobolith. Thus, ingress of water and gas leakage would have occurred throughout labyrinthic and microporiferate stereom layers, including between plate boundaries, rather than only through the proximal canals within the collar. It is unlikely that this would have led to deposition of floating loboliths with their proximal parts preferentially oriented upward (see Springer 1917; Ray 1980). Third, close associations of loboliths and crowns are well known from many sites in the United States and Morocco (e.g., Springer 1917; Haude et al. 2014). Notably, a single, nearly complete juvenile specimen still

attached to a lobolith has been reported (Hess 1999).

The dissociation of crowns and holdfasts of scyphocrinoids should not be viewed as unusual, as it is well known in benthic crinoids (e.g., Plotnick et al. 2016). The reason for such a dissociation is that these two distinct body parts are affected differentially by biostratigraphic processes (e.g., Brett 1981; Brett et al. 1997). One famous example is the Ordovician Cabo Busto (Spain) lag deposit containing thousands of holdfasts of the benthic *Oryctoconus* but hardly any other crinoid ossicles (Seilacher and MacClintock 2005). In the same way, the large size and bulbous shape of loboliths would have given them hydrodynamic characteristics distinct from those of the stem and crown, such that differential transport following stem detachment would have been likely. Also, one cannot exclude nekroplanktonic dispersal of loboliths, as this process is also known in Recent benthic echinoderms, including echinoids (Reyment 1986). Admittedly, however, this commonly occurs due to the desiccation of echinoids through subaerial exposure, which results when they get swept onshore by storm/wave action, a process unlikely to affect those scyphocrinoids that lived below storm wave base.

A critical argument for the planktonic mode of life of scyphocrinoids has been the wide geographic distribution of loboliths. However, when examined at the appropriate taxonomic scale, namely at the species level, the argument for their wide distribution fails. As pointed out by Petr and Prokop (2001): “there is no evidence of ‘cosmopolitan distribution’ of particular species (Prokop and Petr 1987) ... the fossil evidence points rather to more or less restricted colonies of different species or even genera.” Moreover, wide geographic distributions are common in benthic crinoids such as the Recent *Atelectrinus*, *Comissia*, *Poliometra*, *Pentametrocrinus*, and *Thaumatocrinus* (see Hess and Messing 2011) and fossil uinacrinoids (see Milsom et al. 1994; Gorzelak et al. 2017), not because they are planktonic as adults, but rather because their larvae had high dispersal capabilities.

Finally, some of the encrusters of scyphocrinoids argue against their planktonic life mode. For instance, epibenthic platyceratid

snails, known to infest benthic invertebrates (mostly crinoids; see, e.g., Gahn and Baumiller 2003) are also associated with scyphocrinoids (Haude 1992: Plate 1; Hess 1999: Fig. 110). Although, the vertical migration of platyceratid planktotrophic larvae to the water’s surface is a possibility, to our knowledge no examples of syn-vivo platyceratid infestation of other definitively nektonic invertebrates are known (Horný 2000).

*Proposed Mode of Life.*—Taken together, morphologic, taphonomic, and theoretical arguments suggest that scyphocrinoids were benthic. Interestingly, Springer (1917: p. 9), in his generally overlooked monograph on this enigmatic group of crinoids, raised doubts about loboliths as buoys: “The theory that they served as a float loses much of its force. That supposition, always at best a somewhat forced one, is no longer necessary, since the upright position of the bulbs [loboliths] is perfectly consistent with the simpler and more natural idea that they served merely as enlarged roots, by which the crinoids were permanently or temporarily fixed to the sea bottom.”

Our micromorphologic data support the view that the lobolith served as a specialized holdfast. Its bulbous and hollow structure, along with irregular wavy ridges, keels, and spines (observed mostly on the distal, slightly flattened side of lobolith), might have prevented crinoids from dislodgement and from sinking deeply into unconsolidated substrate. Similar “iceberg” and “snowshoe” strategies are present in some Recent mollusk and brachiopod species living on muddy bottoms (Thayer 1975). The fact that chambers of loboliths are frequently filled (at least partly) with fine sediments matching external sediment lithology may be consistent with this interpretation (e.g., Ray 1980; Lee 2005; Huber and Gibson 2007; Haude et al. 2014; Donovan and Miller 2014; our data, Fig. 4). The question as to whether all chambers were open or closed during crinoid life remains unanswered. Hess (1999) argued that larger chambers around the base of the stem were probably open, because they are commonly infilled by a sediment (Haude 1992). The other chambers might have been closed and filled by coelomic or perihæmal fluid, as inferred from the local

presence of sparry calcite. Admittedly, data from internal infillings are inconclusive, because similar types of infillings commonly characterize invertebrates displaying hollow internal structures/cavities (e.g., brachiopods, echinoids, and mollusks) irrespective of their benthic or nektonic/planktonic mode of life (e.g., Wiczyrek 1979; Zamora et al. 2008). However, as stressed by Ray (1980: p. 15) “The stems’ upward orientation in the outcrops..., the geopetal structures that indicate an upward-oriented majority..., and the unsorted sizes of bulbs [loboliths] found in the outcrops, unlike sorted floating organisms pocketed together after death, are several facts that are consistent with the ‘anchoring root’ conclusion.”

During their evolutionary history, and especially during the Paleozoic, many crinoids developed a variety of structures at their distal stems identified as adaptations for living on soft substrates (Seilacher and MacClintock 2005; Plotnick et al. 2016). In our view, loboliths represent yet another example of such a structure. Development of such a hollow structure allowed a crinoid to form a large holdfast without having to secrete massive quantities of calcite. Springer (1917) noted the analogue between loboliths and holdfasts of living alcyonarian polyps (pennatulids). Another analogous bulbous holdfast characterizes the Recent algae *Saccorhiza*, in which a stalk may reach up to about 5 m in length (e.g., McKenzie and Moore 1981).

An important question that needs to be addressed concerns the feeding posture of scyphocrinoids. Maintaining a nearly vertical 3-m-long stalk with a lobolith on the substrate (Fig. 8) would have been challenging, because a slight displacement of the center of mass from the stalk’s long axis would have been difficult to counter and would likely have resulted in the crinoid tipping over. The stability problem would have been even more severe with drag exerted on the crown, as that would produce a large moment ( $\text{drag} \times \text{stalk length}$ ). One solution is that scyphocrinoids, like Recent isocrinids (Baumiller 2008), extended the distal portion of the stalk along the bottom for stability (Figs. 9A,B and 10). In soft substrates, the mass of the stalk and lobolith along the bottom

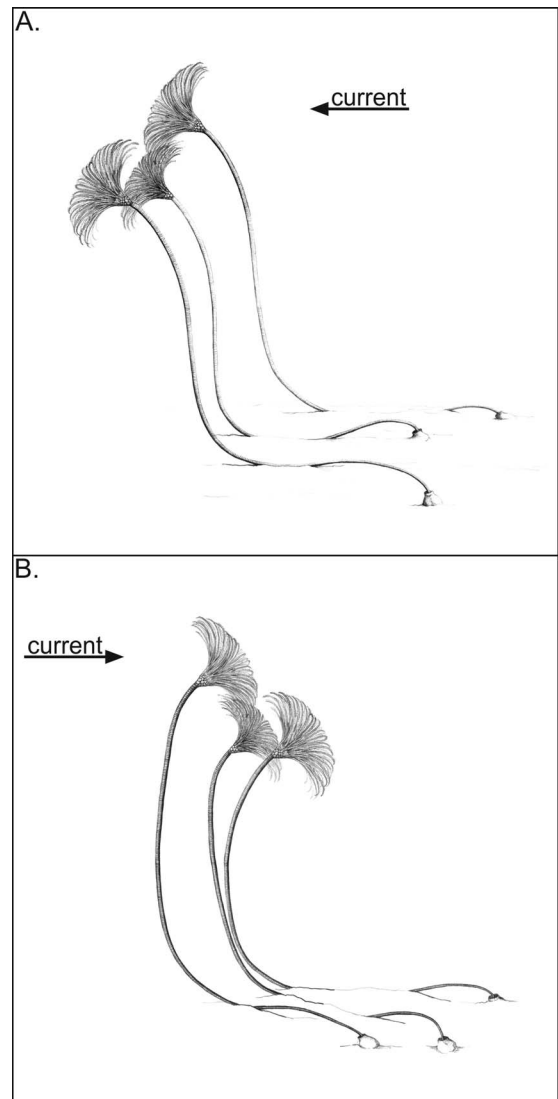


FIGURE 9. Reconstructions of scyphocrinoids as benthic crinoids with the stalks partly extending along the bottom and loboliths facing upstream (A) or downstream (B).

would also act as a counterweight to drag and the weight of the crown, reducing the risk of tipping over. Maintenance of such a feeding posture would have been even more effective if the lobolith was positioned downstream (Fig. 9B). In this scenario, depending on the drag, the horizontal to vertical stalk length ratio might have been actively adjusted with the aid of mutable collagenous tissues (with high drag leading to more of the distal stalk along bottom). In this context, the horizontal

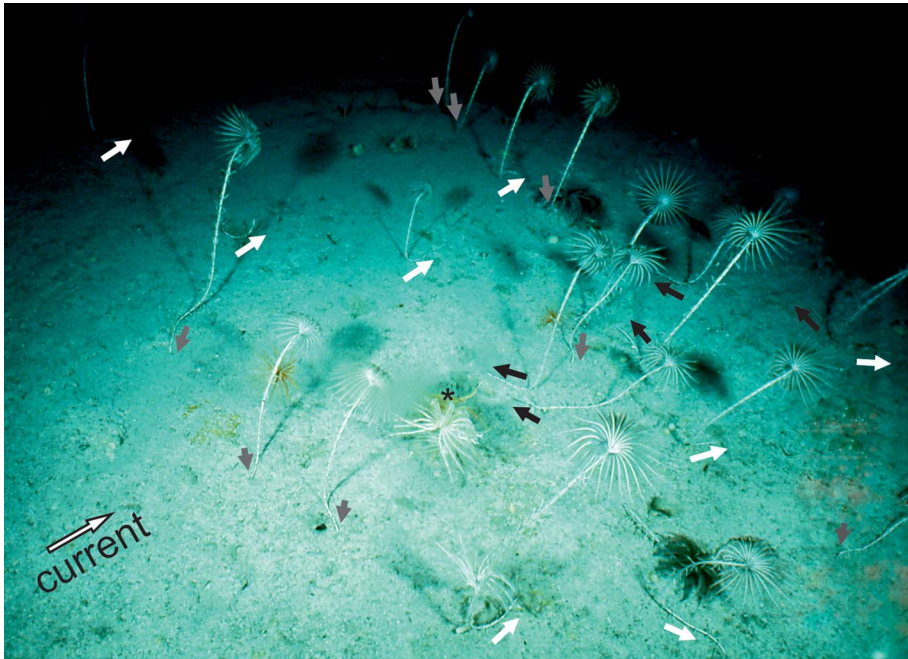


FIGURE 10. The living isocrinids *Neocrinus decorus* in a feeding posture at a depth of 424–430 m south of West End, Grand Bahama Island (26°36.8'N, 78°58.6'W). The water current direction is indicated by the large white arrow. Note that distal portions of isocrinid stalks are extended along the bottom, facing downstream (or oblique-downstream; white arrows) or upstream (or oblique-upstream; black arrows); in some specimens, distal portions of stalks have been buried with fine sediment (gray arrows); the asterisk marks a specimen that is crawling. Photo courtesy of C. G. Messing.

part of the string-like stalk could have also helped prevent sinking and, together with lobolith, might have additionally acted as a drag anchor (see Plotnick and Bauer [2014] for a discussion of biological anchors). The free-lying anchors of scyphocrinoids may have been advantageous during crinoid dislodgement (e.g., induced by storms or anomalously high currents), because they would have remained attached to the long stem and could have been used again. Such drag anchors lying on the bottom might have allowed safe reimplantation of a crinoid in soft substrates without a risk of breaking off the stem (which typically leads to a crinoid death).

Even with a partly recumbent feeding posture, scyphocrinoids, with a stem up to ~3 m long, could have easily achieved the highest epifaunal tier of Paleozoic crinoids (Ausich and Bottjer 1982). Development of such a long stem would have been advantageous not only for feeding, as it elevated the food-gathering crown well above the seafloor into faster

currents (Ausich 1980; Ausich and Bottjer 1982), but also for “escaping” the bottom when unfavorable (e.g., low-oxygen) conditions became prevalent.

### Conclusions

As rightly noted by Seilacher and Hauff (2014: p. 14): “For sessile benthic organisms, becoming pelagic is an evolutionary step comparable to the acquisition of flight in land animals and likewise requires ecological steppingstones.” The hypothesis that scyphocrinoids may have been planktonic, which held sway for more than 100 years, ignores many taphonomic and micro- and macro-anatomical features of these crinoids. Furthermore, we demonstrate that scyphocrinoids would have been poorly suited for a pelagic, tow-net lifestyle. Several lines of evidence suggest that they were benthic and that their loboliths served as modified holdfasts for anchoring on unconsolidated bottoms. So whereas we find no evidence for the “evolutionary step”



envisioned by Seilacher and Hauff (2014) in scyphocrinoids, this crinoid group still remains unique: with a 3 m stem elevating the crown well above the bottom, they would have occupied the highest epifaunal tier in the Paleozoic.

### Acknowledgments

Parts of this study were conducted in the NanoFun laboratory cofinanced by the European Regional Development Fund within the Innovation Economy Operational Programme POIG.02.02.00–00-025/09. We thank Carol Abraczinskas, who helped with Figures 5, 6, and 7, two anonymous reviewers for helpful comments and suggestions, and Paul Selden for permission to reproduce Fig. 1B,C. This paper was completed while M.A.S. was a recipient of a grant from the National Science Centre (grant number UMO-2018/31/B/ST10/00387).

### Literature Cited

- Abel, O. 1920. Lehrbuch der Paläozoologie. Gustav Fischer, Jena.
- Ausich, W. I. 1980. A model for niche differentiation in Lower Mississippian crinoid communities. *Journal of Paleontology* 54:273–288.
- Ausich, W. I., and D. J. Bottjer. 1982. Tiering in suspension-feeding communities on soft substrata throughout the Phanerozoic. *Science* 216:173–174.
- Barrande, J., and W. Waagen. 1887. Système silurien du centre de la Bohême. I: Recherches paléontologiques, 7, *Classedes Echinodermes* 1:1–233.
- Bather, F. A. 1907. The discovery in West Cornwall of a Silurian crinoid characteristic of Bohemia. *Transactions of the Royal Geological Society of Cornwall* 13:191–197.
- Bauer, J. C., and C. M. Young. 2000. Epidermal lesions and mortality caused by vibriosis in deep-sea Bahamian echinoids: a laboratory study. *Diseases of Aquatic Organisms* 39:193–199.
- Baumiller, T. K. 1997. Crinoid functional morphology. In C. Maples and J. Waters, eds. *Geobiology of echinoderms*. Paleontological Society Papers 3: 45–68. Paleontological Society, Knoxville, Tenn.
- Baumiller, T. K. 2008. Crinoid ecological morphology. *Annual Review of Earth and Planetary Sciences* 36:221–249.
- Baumiller, T. K., and C. G. Messing. 2007. Stalked crinoid locomotion, and its ecological and evolutionary implications. *Palaeontologia Electronica* 10(1):2A.
- Baumiller, T. K., M. A. Salamon, P. Gorzelak, R. Mooi, Ch. G. Messing, and F. J. Gahn. 2010. Post-Paleozoic crinoid radiation in response to benthic predation preceded the Mesozoic marine revolution. *Proceedings of the National Academy of Sciences USA* 107:5893–5896.
- Brett, C. E. 1981. Terminology and functional morphology of attachment structures in pelmatozoan echinoderms. *Lethaia* 14:343–370.
- Brett, C. E. 1984. Autecology of Silurian pelmatozoan echinoderms. *Special Papers in Paleontology* 32:87–120.
- Brett, C. E., H. A. Moffat, and W. L. Taylor. 1997. Echinoderm taphonomy, taphofacies, and Lagerstätten. In J. A. Waters, and C. G. Maples, eds. *Geobiology of echinoderms*. Paleontological Society Papers 3:147–190. Paleontological Society, Knoxville, Tenn.
- Corrigan, M. G., C. Corradini, R. Haude, and O. H. Walliser. 2014. Conodont and crinoid stratigraphy of the upper Silurian and Lower Devonian scyphocrinoid beds of Tafilalet, southeastern Morocco. *GFF* 136:65–69.
- Donovan, S. K., and D. N. Lewis. 2009. The mid-Palaeozoic camerate crinoid *Scyphocrinites* Zenker in southwest England. *Bulletin of the Mizunami Fossil Museum* 35:97–100.
- Donovan, S. K., and R. F. Miller. 2014. The camerate crinoid *Scyphocrinites* Zenker in the Upper Silurian or Lower Devonian of New Brunswick, Canada. *Atlantic Geology* 50:290–296.
- Ehrenberg, K. 1926. Zur Frage der biologischen Deutung der (*Camarocrinus*) Wurzeln (Lobolithen) von *Scyphocrinus*. *Paläontologische Zeitschrift* 8:199–220.
- Gahn, F. J., and T. K. Baumiller. 2003. Infestation of Middle Devonian (Givetian) camerate crinoids by platyceratid gastropods and its implications for the nature of their biotic interactions. *Lethaia* 36:71–82.
- Gorzelak, P. 2018. Microstructural evidence for stalk autotomy in *Holocrinus*—the oldest stemgroup isocrinid. *Palaeogeography, Palaeoclimatology, Palaeoecology* 506:202–207.
- Gorzelak, P., and S. Zamora. 2013. Stereom microstructures of Cambrian echinoderms revealed by cathodoluminescence (CL). *Palaeontologia Electronica* 16(3):32A.
- Gorzelak, P., and S. Zamora. 2016. Understanding form and function of the stem in early flattened echinoderms (pleurocystitids) using a microstructural approach. *PeerJ* 4:e1820.
- Gorzelak, P., M. A. Salamon, and T. K. Baumiller. 2012. Predator-induced macroevolutionary trends in Mesozoic crinoids. *Proceedings of the National Academy of Sciences USA* 109:7004–7007.
- Gorzelak, P., E. Gluchowski, and M. A. Salamon. 2014. Reassessing the improbability of a muscular crinoid stem. *Scientific Reports* 4:6049.
- Gorzelak, P., E. Gluchowski, T. Brachaniec, M. Łukowiak, and M. A. Salamon. 2017. Skeletal microstructure of uintacrinoid crinoids and inferences about their mode of life. *Palaeogeography, Palaeoclimatology, Palaeoecology* 468:200–207.
- Grant, R. E. 1972. The lophophore and feeding mechanism of the Productidina (Brachiopoda). *Journal of Paleontology* 46:213–249.
- Grant, R. E. 1975. Methods and conclusions in functional analysis: a reply. *Lethaia* 8:31–34.
- Haeckel, E. 1896. Systematische Phylogenie. Entwurf eines natürlichen Systems der Organismen auf grund ihrer Stammesgeschichte. Teil 2. Wirbellose Tiere. G. Reimer, Berlin.
- Hagdorn, H. 2011. Triassic: the crucial period of post-Palaeozoic crinoid diversification. *Swiss Journal of Paleontology* 130:91–112.
- Hagdorn, H., X. Wang, and C. Wang. 2007. Palaeoecology of the pseudoplanktonic Triassic crinoid *Traumatocrinus* from Southwest China. *Palaeogeography, Palaeoclimatology, Palaeoecology* 247:181–196.
- Hall, J. 1879. Notice of some remarkable crinoidal forms from the lower Helderberg group. *Annual Report on the New York State Museum of Natural History* 28:205–210.
- Haude, R. 1972. Bau und Funktion der *Scyphocrinites*-Lobolithen. *Lethaia* 5:95–125.
- Haude, R. 1992. Scyphocrinoiden, die Bojen-Seelilien im hohen Silur-tiefen Devon. *Palaeontographica Abteilung A* 222:141–187.
- Haude, R. 1998. Seelilien mit Schwimmboje: Die Scyphocrinoiden. *Fossilien* 4:217–225.
- Haude, R., M. G. Corrigan, C. Corradini, and O. H. Walliser. 2014. Bojen-Seelilien (Scyphocrinitidae, Echinodermata) in neudatierten Schichten vom oberen Silur bis untersten Devon Südost-Marokkos. In F. Wiese, M. Reich, and G. Arp, eds. “Spongy, slimy, cosy & more...” Commemorative volume in celebration of the 60th

- birthday of Joachim Reitner. Göttingen Contributions to Geosciences 77:129–145.
- Hess, H. 1999. Scyphocrinitids from the Silurian–Devonian Boundary of Morocco. Pp. 93–102 in Hess, H., W. I. Ausich, C. E. Brett, and M. J. Simms, eds. Fossil Crinoids. Cambridge University Press, Cambridge.
- Hess, H. 2010. Part T (revised), vol. 1, chap. 19: Paleocology of pelagic crinoids. Treatise Online 16:1–33.
- Hess, H., and C. G. Messing. 2011. Crinoidea. Pp. 1–261 in Echinodermata 2, Revised, Crinoidea 3, Part T of P. A. Selden, ed. Treatise on invertebrate paleontology. University of Kansas Paleontological Institute, Lawrence.
- Heywood, K. J. 1996. Diel vertical migration of zooplankton in the Northeast Atlantic. Journal of Plankton Research 18:163–184.
- Hoerner, S. F. 1965. Fluid-dynamic drag: theoretical, experimental and statistical information. Hoerner Fluid Dynamics, Bakersfield, Calif.
- Horný, R. J. 2000. Mode of life of some Silurian and Devonian placyceratids. Bulletin of Geosciences 75:135–143.
- Huber, M. S., and M. A. Gibson. 2007. Preliminary interpretation of paragenesis of mineral and sediment infill in Scyphocrinites loboliths from the Lower Devonian Ross Formation of western Tennessee. Geological Society of America Abstracts with Programs 39(2):35.
- Jacobs, D. K. 1996. Chambered cephalopod shells, buoyancy, structure and decoupling: history and red herrings. Palaios 11:610–614.
- Jaekel, O. 1904. Über sogenannte Lobolithen. Zeitschrift der Deutschen Gesellschaft für Geowissenschaften 56:59–63.
- Jaekel, O. 1918. Phylogenie und System der Pelmatozoen. Palaeontologisches Zeitschrift 3(1):1–128.
- Janevski, G. A., and T. K. Baumiller. 2010. Could a stalked crinoid swim? A biomechanical model and characteristics of swimming crinoids. Palaios 25:588–596.
- Jangoux, M. 1984. Diseases of echinoderms. Helgoländer Meeresuntersuchungen 37:207–216.
- Kirk, E. 1911. The structure and relationships of certain eleutherozoic pelmatozoa. U.S. National Museum Proceedings 141:1–137.
- Kondo, J., Y. Sasano, and T. Ishii. 1979. On wind-driven current and temperature profiles with diurnal period in the oceanic planetary boundary layer. Journal Physical Oceanography 9:360–372.
- Lauder, G. V. 1995. On the inference of function from structure. Pp. 1–18 in J. J. Thomason, ed. Functional morphology in vertebrate paleontology. Cambridge: Cambridge University Press.
- Lee, Ch. P. 2005. Discovery of plate-type scyphocrinoid loboliths in the uppermost Prídolian–lowermost Lochkovian Upper Setul limestone of Peninsular Malaysia. Geological Journal 40:331–342.
- Lumpkin, R., and C. G. Johnson. 2013. Global ocean surface velocities from drifters: mean, variance, El Niño–Southern Oscillation response, and seasonal cycle. Journal of Geophysical Research: Oceans 118:2992–3006.
- Macurda, D. B., Jr., and D. L. Meyer. 1974. Feeding posture of modern stalked crinoids. Nature 247:394–396.
- McKenzie, J. D., and P. G. Moore. 1981. The microdistribution of animals associated with the bulbous holdfasts of *Saccorhiza polyschides* (Phaeophyta). Ophelia 20:201–213.
- Messing, C. G., A. C. Neumann, and J. C. Lang. 1990. Biozonation of deep-water lithoherms and associated hard-grounds in the northeastern Straits of Florida. Palaios 5:15–33.
- Messing, C. G., J. David, M. Roux, N. Améziane, and T. K. Baumiller. 2007. *In situ* stalk growth rates in tropical western Atlantic sea lilies (Echinodermata: Crinoidea). Journal of Experimental Marine Biology and Ecology 353:211–220.
- Meyer, D. L., and D. B. Macurda Jr. 1977. Adaptive radiation of the comatulid crinoids. Paleobiology 3:74–82.
- Meyer, D. L., and D. B. Macurda Jr. 1980. Ecology and distribution of shallow-water crinoids of Palau and Guam. Micronesica 16:59–99.
- Meyer, D. L., C. A. LaHaye, N. D. Holland, A. C. Arenson, and J. R. Strickler. 1984. Time-lapse cinematography of feather stars (Echinodermata: Crinoidea) on the Great Barrier Reef, Australia: demonstrations of posture changes, locomotion, spawning and possible predation by fish. Marine Biology 78:179–184.
- Milsons, C.V., M. J. Simms, and A. S. Gale. 1994. Phylogeny and palaeobiology of *Marsupites* and *Uintacrinus*. Palaeontology 37:595–607.
- Peng, L. C. 2001. Occurrences of *Scyphocrinites* loboliths in the Upper Silurian Upper Setulimestone of Pulau Langgun, Langkawi, Kedah and Guar Sanai, Berseri, Perlis. Pp. 99–104 in Geological Society of Malaysia Annual Geological Conference, Pangkor Island, Perak Darul Ridzuan, Malaysia, June 2–3 2001.
- Plotnick, R., and J. Bauer. 2014. Crinoids aweigh: experimental biomechanics of *Ancyrocrinus* holdfasts. In D. Hembree, B. Platt, and J. Smith, eds. Experimental approaches to understanding fossil organisms. Topics in Geobiology 41:413–20. Springer, Dordrecht, Netherlands.
- Plotnick, R. E., and T. K. Baumiller. 2000. Invention by evolution: functional analysis in paleobiology. Paleobiology 26:305–323.
- Plotnick, R. E., C. M. Ebej, and A. Zinga. 2016. A radicle solution: morphology and biomechanics of the *Eucalyptocrinites* “root” system. Lethaia 49:130–144.
- Price, J. F., R. A. Weller, and R. R. Schudlich. 1987. Wind-driven ocean currents and Ekman transport. Science 238:1534–1538.
- Prokop, R. J., and V. Petr. 1987. *Marhoumacrinus legrandi*, gen. et sp. n. (Crinoidea, Camerata) from Upper Silurian–lowermost Devonian of Algeria. Sborník Národního Muzea v Praze 43:1–14.
- Prokop, R. J., and V. Petr. 1992. A note on the phylogeny of scyphocrinitid crinoids. Acta Universitatis Carolinae, Geologica 1–2:31–36.
- Prokop, R. J., and V. Petr. 2001. Remarks on palaeobiology of juvenile scyphocrinitids and marhoumacrinids (Crinoidea, Camerata) in the Bohemian uppermost Silurian and lowermost Devonian. Journal of the Czech Geological Society 46:259–268.
- Racki, G., A. Baliński, R. Wrona, K. Małkowski, D. Drygant, and H. Szaniawski. 2012. Faunal dynamics across the Silurian–Devonian positive isotope excursions ( $\delta^{13}\text{C}$ ,  $\delta^{18}\text{O}$ ) in Podolia, Ukraine: comparative analysis of the Ireviken and Klomk events. Acta Palaeontologica Polonica 57:795–832.
- Ray, B. S. 1980. A study of the crinoid genus *Camarocrinus* in the Hunton Group of Pontotoc County, Oklahoma. Baylor Geological Studies 39:1–16.
- Reyment, R. A. 1986. Nekroplanktonic dispersal of echinoid tests. Palaeogeography, Palaeoclimatology, Palaeoecology 52:347–349.
- Richards, S. A., H. P. Possingham, and J. Noye. 1996. Diel vertical migration: modelling light-mediated mechanisms. Journal of Plankton Research 18:2199–2222.
- Roux, M. 1980. Les Crinoïdes pédonculés (Echinodermes) photographiés sur les dorsales océanique de l’Atlantique et du Pacifique: implications biogéographiques. Comptes rendus de l’Académie des Sciences 291:901–904.
- Rudwick, M. J. S. 1964. The inference of function from structure in fossils. British Journal for the Philosophy of Science 15:27–40.
- Scheibling, R. E. 1984. Echinoids, epizootics and ecological stability in the rocky subtidal off Nova Scotia, Canada. Helgoländer Meeresuntersuchungen 37:233–242.
- Schuchert, C. 1904. On Siluric and Devonian Cystidea and *Camarocrinus*. Smithsonian Miscellaneous Collections 47:201–272.
- Schudlich, R. R., and J. F. Price. 1998. Observations of seasonal variation in the Ekman layer. Journal of Physical Oceanography 28:1187–1204.
- Seilacher, A., and A. D. Gishlick. 2014. Morphodynamics. CRC Press, Boca Raton, Fla.
- Seilacher, A., and R. B. Hauff. 2004. Constructional morphology of pelagic crinoids. Palaios 20:224–240.

- Seilacher, A., and C. MacClintock. 2005. Crinoid anchoring strategies for soft-bottom dwelling. *Palaios* 20:224–240.
- Signor, P. 1982. A critical re-evaluation of the paradigm method of constructional inference. *Neues Jahrbuch für Geologie und Paläontologie, Abhandlungen* 164:59–63.
- Simms, M. J. 1986. Contrasting lifestyles in Lower Jurassic crinoids: a comparison of benthic and pseudopelagic Isocrinida. *Palaeontology* 29:475–493.
- Simms, M. J. 2001. Stereom microstructure of columnal latera: a character for assessing phylogenetic relationships in articulate crinoids. *Swiss Journal of Palaeontology* 130:143–154.
- Smith, A. B. 1980. Stereom microstructure of the echinoid test. *Special Papers in Palaeontology* 25:1–81.
- Springer, F. 1917. On the crinoid genus *Scyphocrinus* and its bulbous root *Comarocrinus*. *Smithsonian Institution Publication* 2871:1–239.
- Strimple, H. L. 1963. Crinoids of the Hunton Group (Devonian–Silurian) of Oklahoma. *Oklahoma Geological Survey Bulletin* 100:1–169.
- Sun, Y. C., and S. S. Szetu. 1947. The stratigraphical and biological position of the species "*Camarocrinus asiaticus*." *Bulletin of the Geological Society of China* 27:243–252.
- Thayer, C. W. 1975. Morphologic adaptations of benthic invertebrates to soft substrata. *Journal of Marine Research* 33:177–189.
- Ubaghs, G. 1978a. Camerata. Pp. T408–T519 in G. Ubaghs *et al.*, *Echinodermata 2. Part T* of R. C. Moore and C. Teichert, eds. *Treatise on invertebrate paleontology*. Geological Society of America, Boulder, Colo., and University of Kansas, Lawrence.
- Ubaghs, G. 1978b. Skeletal morphology of fossil crinoids. Pp. T58–T216 in G. Ubaghs, *Echinodermata 2. Part T* of R. C. Moore and C. Teichert, eds. *Treatise on invertebrate paleontology*. Geological Society of America, Boulder, Colo., and University of Kansas, Lawrence.
- Valenzuela-Ríos, J. I., and J.C. Liao. 2012. Color/facies changes and global events, a hoax? A case study from the Lochkovian (Lower Devonian) in the Spanish Central Pyrenees. *Palaeogeography, Palaeoclimatology, Palaeoecology* 367–368:219–230.
- Vogel, S. 1981. *Life in moving fluids*. Willard Grant Press, Boston.
- Wieczorek, J. 1979. Geopetal structures as indicators of top and bottom. *Annales de la Societe Geologique de Pologne* 49(3–4):215–221.
- Zamora, S., E. Mayoral, J. A. G. Vintaned, S. Bajo, and E. Espílez. 2008. The infaunal echinoid *Micraster*: taphonomic pathways indicated by sclerozoan trace and body fossils from the Upper Cretaceous of northern Spain. *Geobios* 41:15–29.