

# The drivers, trends and dietary impacts of non-nutritive sweeteners in the food supply: a narrative review

Cherie Russell<sup>1\*</sup>, Carley Grimes<sup>2</sup>, Phillip Baker<sup>2</sup>, Katherine Sievert<sup>1</sup> and Mark A. Lawrence<sup>2</sup>

<sup>1</sup>*School of Exercise and Nutrition Sciences, Deakin University, Geelong, Australia*

<sup>2</sup>*Institute for Physical Activity and Nutrition, Deakin University, Geelong, Australia*

## Abstract

Poor diets, including excess added sugar consumption, contribute to the global burden of disease. Subsequently, many nutrition policies have been implemented to reduce added sugar intake and improve population health, including taxes, education, labelling and environmental interventions. A potential consequence of these policy actions is the substitution of added sugars with non-nutritive sweeteners (NNS) in a variety of foods and beverages. NNS are used to reduce the energy and sugar content of foods and beverages while maintaining their palatability. Evidence of the toxicological risks of NNS is inconsistent, though concerns have been raised over the potential substitution effects of ultra-processed foods containing NNS for whole foods. This review aimed to provide an overview of current NNS food supply and consumption patterns, assess added sugar-reduction policies and their impact on NNS, and determine the impact of NNS on food choice, energy intake and diet quality. NNS are widely available in a variety of products, though most commonly in carbonated beverages, dairy products, confectionery, table-top sweeteners and fruit drinks. However, the longitudinal trends of different product categories, and differences between geographies and economy-income levels, require further study. Few studies have examined NNS consumption trends globally, though an increase in NNS consumption in beverages has been observed in some regions. Research examining how the increased availability of low-sugar, NNS-containing products affects global dietary patterns is limited, particularly in terms of their potential substitution effects.

**Key words:** Non-nutritive sweeteners: Artificial sweeteners: Food supply: Sugar: Food policy

(Received 11 February 2020; revised 5 September 2020; accepted 30 October 2020; accepted manuscript published online 5 November 2020)

## Introduction

Unhealthy diets and poor nutrition are leading risk factors for the rising rates of non-communicable diseases globally<sup>(1)</sup>. Dietary guidelines are developed as a reference standard to inform policy actions and regulation to attenuate these dietary risk factors<sup>(2)</sup>. At the time of writing, ninety countries have developed food-based dietary guidelines, eighty-two of which recommend limiting or reducing the consumption of free or added sugar<sup>(3,4)</sup>. Added sugars, generally defined as all monosaccharides and disaccharides added to foods by the manufacturer, cook or consumer<sup>(5)</sup>, have increased in the food supply over the last 30 years, and are often a component of ultra-processed foods<sup>(6,7)</sup>. The WHO recommends 'free sugar' consumption (consisting of both added sugar and sugars that are naturally present in honey, syrups and fruit juices) of no more than 10 % of total energy intake<sup>(8)</sup>. Similarly, the Scientific Advisory Committee on Nutrition (SACN) in the UK and the USA dietary guidelines recommend limiting the intake of free sugar to 5 % and added sugar to 10 % of energy intake, respectively<sup>(9)</sup>. Despite these recommendations, added sugar consumption contributes on average 11–17 % and 7–11 % of energy intake in European children and adults<sup>(10)</sup>, and 7.5–19.5 % across the American population<sup>(11)</sup>. Frequent overconsumption of added sugar has been linked with obesity, non-communicable diseases

including type 2 diabetes, and dental caries, particularly from sugar-sweetened beverages (SSB)<sup>(12–15)</sup>.

A variety of policy actions have been implemented globally to reduce added sugar intakes<sup>(16)</sup>. Examples include: education based on the recommendations of food-based dietary guidelines<sup>(17)</sup>; food reformulation<sup>(18)</sup>; taxation of added sugar<sup>(19)</sup>; restricting sugar-enriched food and drink availability<sup>(20)</sup>; marketing restrictions<sup>(21)</sup>; public awareness campaigns<sup>(22)</sup>; and front-of-pack nutrient labelling<sup>(6,23,24)</sup>. Contesting paradigms exist regarding which types of policy actions should be implemented to reduce the consumption of added sugar. Broadly, these competing paradigms can be described as either 'holistic' or 'reductionist' in their approach to public health<sup>(25)</sup>. Policy actions that align with the holistic paradigm target broader economic and food system changes, including improving dietary patterns, food security, the preservation of biodiversity and sustainability<sup>(26)</sup>. Conversely, a reductionist worldview promotes policy actions that target individual food products and their nutrient and ingredient composition<sup>(26)</sup>. The reductionist worldview has also been described as 'nutritionism' – an ideology in which the nutrients that comprise foods determine their value in the diet, as opposed to the whole food or dietary pattern<sup>(27)</sup>.

A case study of saturated fat provides an example of the unintended consequences of reductionist policy. After research

**Abbreviations:** ADI, acceptable daily intake; HEI, Healthy Eating Index; NNS, non-nutritive sweetener; SSB, sugar-sweetened beverage.

\* **Corresponding author:** Cherie Russell, email caru@deakin.edu.au

linked saturated fat to heart disease, consumers were encouraged to decrease its consumption<sup>(28)</sup>. Consequently, *trans*-fats (partially hydrogenated plant oils) were often used to replace saturated fats in processed foods<sup>(28)</sup>. Though *trans*-fats were initially regarded as a healthier, cheaper and often plant-based (i.e. 'natural') alternative, evidence now demonstrates that they contribute to heart disease to a greater extent than some saturated fats<sup>(29)</sup>, and potentially increase the risk of type 2 diabetes and abdominal adiposity<sup>(30,31)</sup>. In turn, *trans*-fats have now been reduced or removed from many food supply chains globally, though in many cases have been replaced with interesterified fats<sup>(32,33)</sup>. The health effects of interesterified fats, particularly in terms of cardiovascular health, are debated<sup>(32,33)</sup>. Parallels may be drawn between the reductionist approach to decrease saturated fat consumption by *trans*-fats substitution and current nutrient-specific policy actions to decrease added sugar consumption.

Substituting non-nutritive sweeteners (NNS) for added sugar in ultra-processed food is one action that may reduce added sugar in the food supply. NNS are non-energy food additives that impart sweetness when added to a product<sup>(34)</sup>. They are used as substitutes for nutritive sweeteners (including sugar, honey and high-fructose maize syrup, among others) to reduce the energy and sugar content of processed foods while maintaining their palatability<sup>(35)</sup>. The phrase 'NNS' has been chosen for this review based on terminology used by organisations including the Codex Alimentarius Commission (Codex), the United States Department of Agriculture and the FAO, as well as being commonly used throughout the literature. NNS are also commonly referred to as artificial sweeteners (although this term ignores 'natural' sweeteners including stevia and monk fruit extract), non-caloric sweeteners, low-calorie sweeteners, intense sweeteners and high-intensity sweeteners. There are currently thirteen NNS approved for use globally (though specific types of sweeteners permitted for use differ between countries). The amounts of NNS that can be used in a product, and the products to which they can be added, is determined by each country's food standards regulating body. Online Supplementary Table S1 details all NNS currently in the global food supply, including their sweetener class, acceptable daily intake (ADI), relative sweetness to sucrose, energy per g, uses and properties. In this instance, NNS does not include polyols, as these additives have a small energy content<sup>(36)</sup>.

Given the novelty of many NNS, questions have been posed about their risk to public health<sup>(37)</sup>. Systematic reviews have found that the benefits and harms of NNS are inconsistently reported<sup>(38,39)</sup>. Experimental animal studies and observational studies in human subjects have reported associations between NNS consumption and weight gain<sup>(38,40–42)</sup>, changes to the gut microbiome (by saccharin, sucralose and stevia)<sup>(43)</sup> and an increased risk of type 2 diabetes<sup>(44,45)</sup>. Relationships from observational studies can only be classified as correlational and may suffer from bias, as participants with existing morbidities may be more likely to consume NNS than those without. Comparatively, clinical trials and experimental studies in human subjects have generally shown that NNS consumption is associated with a reduction in BMI<sup>(46–48)</sup> and fasting blood glucose<sup>(49,50)</sup>. Additionally, some experimental studies have found no effects of NNS consumption on BMI<sup>(51,52)</sup>. As public health impacts typically rely on dietary patterns, more studies are needed that detail the impacts of diets high in NNS

on dental health, type 2 diabetes and other health outcomes. The overall consensus throughout the literature is that NNS are not carcinogenic<sup>(53,54)</sup>. In addition to these toxicological concerns, particular NNS (including acesulfame-K) are 'micro-pollutants'; they are not effectively removed from wastewater after treatment, and hence may contaminate water supplies<sup>(55,56)</sup>.

In public health, the nature and scope of risk are broader than the toxicological outcomes outlined above. Concerns have also been raised over the potential substitution effects of low-energy, NNS-containing discretionary foods for nutritious whole foods, and the long-term impact this may have on population health<sup>(37)</sup>. Nutrient-level policies to reduce added sugar consumption may encourage the reformulation of existing high-sugar products with NNS. This can create a 'health halo effect', allowing industry to make discretionary products appear 'healthy'<sup>(57)</sup>. This perception of healthiness may be used to promote the consumption of low-sugar, low-energy discretionary foods while displacing more nutritious foods from the diet.

Despite the increasing attention on added sugar intake, and subsequent policy actions to reduce it, there is a lack of understanding of the politics influencing the promotion of such actions, the impact of these policy actions on the added sugar and NNS composition of foods and beverages, and the subsequent impact on NNS consumption and overall dietary balance. Thus, the aim of the present review is to evaluate how policy actions to reduce added sugar consumption may influence NNS-related food supply trends, the consumption of NNS and dietary patterns more broadly. This review will be divided into three sections: (i) an overview of current NNS food supply and consumption patterns; (ii) added sugar-reduction policies and their impact on NNS; and (iii) the impact of NNS on food choice, energy intake and diet quality.

## Methods

A narrative review method was adopted, given the complexity of the topic, and the diverse aims, study designs and methods of the included literature<sup>(58,59)</sup>. To improve the rigour of the review, a systematic search of the literature was performed. This involved restricting the focus to well-defined areas of interest, and the application of strict inclusion and exclusion criteria<sup>(60)</sup>. The search followed four steps: (i) a scoping review; (ii) systematic search for relevant literature; (iii) appraisal of studies selected for review; and (iv) data extraction, analysis and synthesis of the results.

### Scoping review and systematic search for relevant literature

After consultation with a research liaison librarian, databases used included EBSCOhost (advanced search database – Academic Search Complete; Business Source Complete; CINAHL Complete; Global Health, GreenFILE; Health Policy Reference Center, MEDLINE Complete, PsycINFO, SocINDEX), Web of Science and Scopus. These databases were chosen for their comprehensiveness and conventional use in the public health nutrition discipline. Given the broad nature of the review, three searches with different search strings were used to capture all relevant literature.

**Table 1.** Search strings used for the present review

Search no.	Guiding question for each search	Search string
1	What are the policy actions to reduce added sugar intake that may impact the levels of non-nutritive sweeteners in the food supply?	(sugar OR sweetener*) AND (policy OR policies OR legislat* OR regulat* OR government* OR environ* OR "consumer demand" OR "novel technology" OR "new technology" OR manufact* OR consump* OR corporat* OR price OR cost) NOT (ethanol or alcohol or fuel or energy or salt)
2	What are the consumption and food supply trends of non-nutritive sweeteners?	("artificial sweeteners" OR "artificial sweetener" OR "non-nutritive sweetener" OR "non-nutritive sweeteners" OR "non nutritive sweetener" OR "non nutritive sweeteners" OR "high-intensity sweetener" OR "high-intensity sweeteners" OR "high intensity sweetener" OR "high intensity sweeteners" OR "non-caloric sweetener" OR "non-caloric sweeteners" OR "non caloric sweetener" OR "non caloric sweeteners" OR "low-calorie sweetener" OR "low-calorie sweeteners" OR "low-calorie sweetener" OR "low-calorie sweeteners" OR "sugar substitute" OR "sugar substitutes") AND ("food environment" OR landscape OR "food supply" OR consumption OR eating)
3	How does non-nutritive sweetener consumption impact dietary intakes (diet quality, energy intake and overall dietary balance)?	(artificial sweeteners" OR "artificial sweetener" OR "non-nutritive sweetener" OR "non-nutritive sweeteners" OR "non nutritive sweetener" OR "non nutritive sweeteners" OR "high-intensity sweetener" OR "high-intensity sweeteners" OR "high intensity sweetener" OR "high intensity sweeteners" OR "non-caloric sweetener" OR "non-caloric sweeteners" OR "non caloric sweetener" OR "non caloric sweeteners" OR "low-calorie sweetener" OR "low-calorie sweeteners" OR "low-calorie sweetener" OR "low-calorie sweeteners" OR "sugar substitute" OR "sugar substitutes" OR "intense sweetener" OR "intense sweeteners") AND ("dietary pattern" or "diet" or "consumption" or "energy intake" or "food intake" or "energy balance")

**Table 2.** Inclusion and exclusion criteria for the present review

Inclusion	Exclusion
(1) Published in English	(1) Dates before 1878 or after January 2020
(2) Peer-reviewed academic journal articles	(2) Opinion pieces, perspectives, study protocols, viewpoints, editorials and commentaries
(3) 1878*–January 2020	(3) Studies that occurred where people were not free living and healthy
(4) Healthy, free-living populations	(4) Animal studies
(5) Studies of adults or children	(5) Modelling studies
(6) All geographies	

\* The year 1878 was chosen as this was when the first non-nutritive sweetener (saccharin) was discovered.

Search terms were identified from an initial scoping review. The search was conducted in March and April of 2019 and updated in January of 2020. Search strings are shown in Table 1. A citation snowballing technique was also used, which involved hand searching key papers' reference lists.

The inclusion and exclusion criteria are shown in Table 2. The year 1878 was chosen as the starting date for literature as this marked the discovery of the first NNS (saccharin).

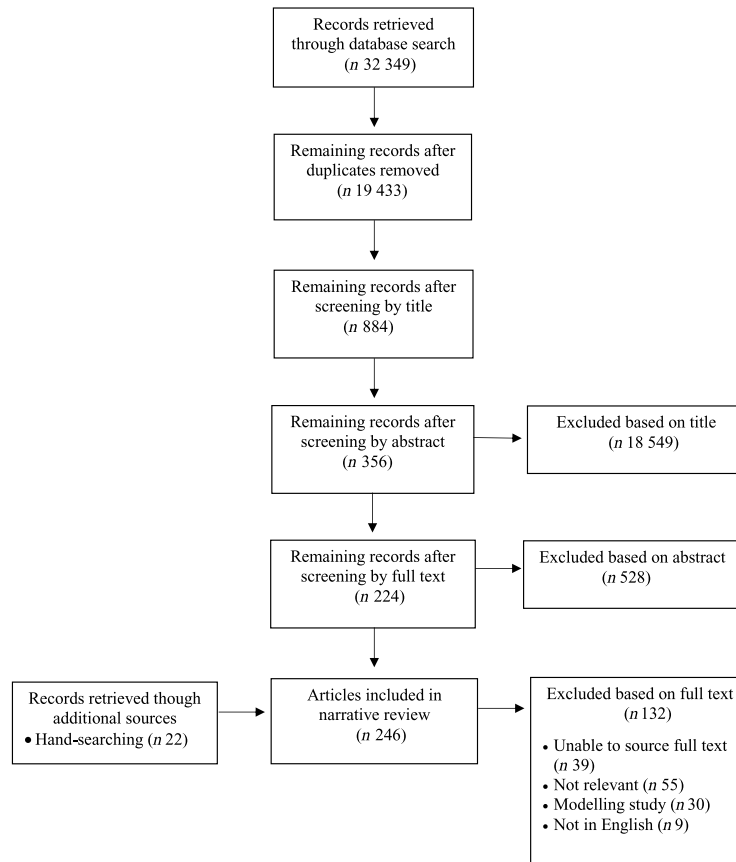
### Appraisal of selected studies for review

Duplicates were removed. Remaining records were then screened against the inclusion and exclusion criteria listed in Table 2. This involved the following steps: (i) screening of studies by title; (ii) screening of remaining studies by abstract; (iii) screening of remaining studies by full text. A second reviewer independently screened 10 % of articles by title and abstract, and all full-text articles, to minimise bias. Disagreements were resolved through discussion; where no agreement was reached, a third party acted as an arbiter. As this research aimed to assess the effects of

existing, implemented policy initiatives, modelling studies were intentionally excluded. This decision was made to clearly address the research question and aims, for which policy actions needed to have been implemented such that their influence on the food supply and consumption could be determined. For search 1, only studies that explored how a policy action directly affected NNS consumption or levels in the food supply were critically analysed. Despite the potential for the same policy actions discussed in other studies to have an impact on NNS, it was not possible to infer this outcome if the authors had not specifically analysed the change in NNS consumption, sales or levels in the food supply. Fig. 1 shows a PRISMA (Preferred Reporting Items for Systematic Reviews and Meta-Analyses) flow chart of the search.

### Data extraction, analysis, and synthesis

Included studies were uploaded to the qualitative analysis software NVivo (QSR International, version 12) for data extraction and analysis. First, all studies were coded using a coding schema derived from the scoping review. Constant comparative analysis



**Fig. 1.** PRISMA (Preferred Reporting Items for Systematic Reviews and Meta-Analyses) flowchart of the search.

was used to compare, integrate, modify and/or generate new codes through ongoing rounds of data analysis<sup>(61,62)</sup>. The coded data were used to identify major themes that were then synthesised into the results. Results were discussed comprehensively with the research team as the analysis progressed to limit researcher subjectivity.

## Results

### Overview of studies

A total of 246 peer-reviewed journal articles were included in the review. As shown in Fig. 2, the frequency of studies assessing NNS increased over time. This suggests an increased research interest in this topic area, consistent with a growing number of policy actions targeting added sugar internationally and the rise in variety and regulation of NNS.

### Current non-nutritive sweetener food supply and consumption patterns

Fifty-four studies included in the review explored NNS consumption trends and levels in the food supply. A description of these studies is included as online Supplementary Table S2.

**Food supply patterns.** Studies found NNS in a wide variety of products across the global food supply, often in food that consumers may not expect, were not labelled as ‘diet’ or ‘lite’ and were not

traditionally sweet. These products included yoghurt<sup>(63–77)</sup>, dairy desserts (including mousse and ice-cream)<sup>(64,66–69,71,72,74,77–79)</sup>, milk<sup>(80,81)</sup>, carbonated beverages<sup>(63–65,67–70,72–92)</sup>, energy drinks<sup>(73,78)</sup>, bakery products<sup>(68,76,77,81,93)</sup>, other drinks (fruit drinks, ice tea, vegetable juice, nectar, cordial and flavoured mineral water)<sup>(63–65,68–70,72,73,77,84,86,88,94)</sup>, pre-made coffee/tea<sup>(80,83–85,88)</sup>, table-top sweeteners<sup>(64,65,67,69,70,72,76,84)</sup>, confectionery (including chewing gum)<sup>(64–67,69–72,76,77,79–81,83,85)</sup>, pickled food<sup>(83,85)</sup>, processed fruits and vegetables<sup>(93)</sup>, jam<sup>(64,70–72,75)</sup>, salad dressing<sup>(67,73,85)</sup>, cream substitutes<sup>(67)</sup>, alcoholic drinks<sup>(66,80,83,85,95)</sup>, condiments<sup>(66,71,72,76,79,85,87)</sup>, syrup<sup>(72,80)</sup>, cereal<sup>(81,93)</sup>, miscellaneous snack foods<sup>(85)</sup>, protein bars<sup>(73)</sup>, baby food<sup>(73)</sup>, flavoured ice<sup>(85,96)</sup>, fish products<sup>(75,85)</sup> and pan masala<sup>(96)</sup>. While most of these sweetened products were found in several countries, pan masala was specific to India, whilst the alcoholic drinks Soju, Takju and Yakju were specific to South Korea. It is important to note that all products found to contain NNS were ultra-processed foods.

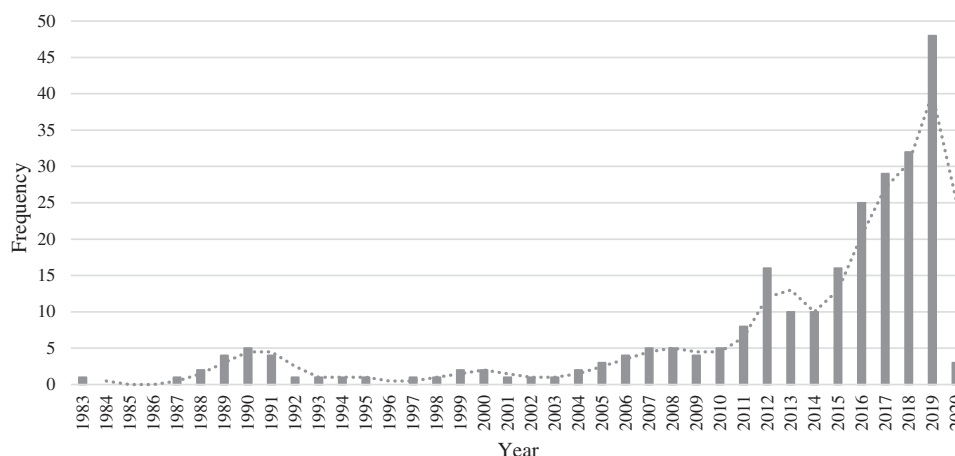
The products contributing the most to NNS consumption were carbonated beverages<sup>(63,65,67,69,70,72–75,77,78,80,82–84,86,87,89–91)</sup>, dairy products (especially yoghurts)<sup>(63,65–68,70,72–74,77,78)</sup>, confectionery (including chewing gum)<sup>(64–66,72,77,81,97)</sup>, table-top sweeteners<sup>(64,67,69,70,72,84)</sup> and juices<sup>(63,69,77,84)</sup>. Some studies found that NNS did not always entirely replace sugar in sweetened products; rather, they were used in addition to nutritive sweeteners<sup>(73,89,98)</sup>.

**Non-nutritive sweetener consumption.** Few studies (*n* 10) explored the trends of NNS consumption over time. Those that

**Table 3.** Trends of non-nutritive sweetener (NNS) consumption by country

Country	Trend	Magnitude of change	Reference
Norway	↑	Frequency of NNS beverage intake increased from 1.2/week in 2001 to 1.6/week in 2016	Bolt-Evensen <i>et al.</i> (2018) <sup>(100)</sup>
USA	↑	Proportion of adults consuming 'diet' drinks increased from 3 % in 1965 to 20 % in 2018	Bleich <i>et al.</i> (2014) <sup>(99)</sup>
USA	↑	Proportion of adults consuming NNS beverages increased from 14.9 % in 1999 to 18.3 % in 2008	Drewnowski & Rehm (2015) <sup>(101)</sup>
USA	↑	Average weight of NNS beverages consumed increased from 148 g/d in 1999 to 183 g/d in 2008	Fakhouri <i>et al.</i> (2012) <sup>(103)</sup>
USA	↑	Percentage of females consuming NNS beverages increased from 17.8 % to 21.2 % and males increased 13.9 % to 19 % from 1999 to 2010	
USA	↑	Proportion of individuals consuming NNS increased from 3 % in 1965 to 15 % in 2004	Mattes & Popkin (2008) <sup>(102)</sup>
USA	↑	Low/no-energy beverage consumption tripled from 2001 to 2010	Mesirow & Welsh (2015) <sup>(88)</sup>
		Intake rose from 34 to 90 g	
		Prevalence of consumption increased from 8.2 % to 22.6 %	
USA	↑	Increase in NNS products purchased from 13.3 % in 2005 to 15.2 % in 2009	Ng <i>et al.</i> (2012) <sup>(73)</sup>
USA	↑	Purchase of beverages containing NNS increased significantly from 2000 to 2010 (amount not specified)	Piernas <i>et al.</i> (2013) <sup>(89)</sup>
USA	↑	Proportion of children consuming NNS increased from 8.7 % in 1999 to 14.9 % in 2008 and in adults from 26.9 % in 1999 to 32 % in 2008	Sylvetsky <i>et al.</i> (2012) <sup>(98)</sup>
USA	↑	Proportion of children consuming NNS increased from 8.7 % in 1999 to 25.7 % in 2012 and in adults from 26.9 % in 1999 to 41.5 % in 2012	Sylvetsky <i>et al.</i> (2017) <sup>(74)</sup>

↑, Increase.



**Fig. 2.** Frequency of studies included in the review by year.

did demonstrated an increase<sup>(73,74,82,88,89,98–103)</sup> (Table 3). Consumer purchasing data are included together with data on consumption, as the trends in NNS purchasing were often used as a proxy by studies to estimate consumption trends. The major contributors to the increase in NNS consumption were beverages<sup>(88,89,98–101,103)</sup>, though changes in beverage consumption were also often the only variable studied.

Though longitudinal studies suggested that the proportion of the population consuming NNS is increasing, almost all cross-sectional studies demonstrated that amounts consumed did not exceed the ADI (the amount of the sweetener that can be consumed on a daily basis over a lifetime without appreciable risk to health)<sup>(63–66,70,72,79,82,83,85–87,93,95,97,104–106)</sup>. Generally, this was determined through either food records<sup>(64,65,82,104)</sup> or a combination of diet recalls (to determine consumption) and food label surveys/HPLC (to determine the amount of NNS in food and beverage items)<sup>(66,72,80,85,86,95,105,106)</sup>. There were exceptions to this finding, although these were generally found in particular

sub-groups of consumers<sup>(63,104,107)</sup>. Consumption of NNS was closer to the ADI for toddlers and children, probably due to their lower body mass but not proportionately decreased consumption of sweeteners<sup>(69,79,83,90,93,104,107)</sup>. Illustratively, Garavaglia *et al.*<sup>(69)</sup> found that 1.1 % of pre-schoolers and 0.9 % of school children in Argentina exceeded the ADI of cyclamate. Additionally, Meenakshi *et al.*<sup>(96)</sup> found that an Indian sub-population could be exceeding the ADI for saccharin due to high consumption of pan masala and crushed ice. Of the sweeteners studied, cyclamate was almost always the sweetener closest to or exceeding the ADI<sup>(63,64,69,97,104,108)</sup>. Contributing factors may include the relative affordability of cyclamate when compared with other sweeteners, the higher amounts by weight included in food (as cyclamate is only 30 × sweeter than sugar, compared with advantame, which is 20 000 × sweeter) and its prevalence as a commonly used sweetener in many countries' food supplies<sup>(109)</sup>.

The characteristics of NNS consumers were consistent across most studies. Frequently, in comparison with non-consumers,

NNS consumers had a higher BMI<sup>(70,74,84,90,98,99,110–114)</sup> (though one study found this association only in women, not men<sup>(63)</sup>), higher education level/socio-economic status<sup>(63,70,74,76,84,89,99,100,111–113,115)</sup>, were more likely to be women<sup>(64,70,74,84,89,90,98–100,111,112,115)</sup>, had increased consumption with age<sup>(70,74,84,100,111,112,115)</sup> (though two studies found the opposite<sup>(99,110)</sup>), were more likely to be non-Hispanic whites<sup>(70,74,84,89,99,111,115)</sup>, more likely to be on a diet<sup>(70,84,90,100)</sup> or have type 2 diabetes<sup>(70,74,110)</sup> and were more likely to live in an English-speaking country<sup>(70,115,116)</sup>.

### Added sugar-reduction policies and their impact on non-nutritive sweeteners in the food supply

A total of 134 studies included in the review assessed policy actions to reduce added sugar consumption. Five main policy categories emerged: taxation (*n* 38), education (*n* 41), food environment interventions (*n* 49), labelling (*n* 22) and reformulation (*n* 6). Here, *n* is larger than the total number of studies as some described more than one policy action.

A summary of studies that have assessed the impact of these policy actions on added sugar consumption, and how this has affected either NNS consumption or levels in the food supply, is shown in Table 4. Studies that assessed policy actions promoting the consumption of whole foods or improved dietary patterns, including subsidies on fruits and vegetables or the promotion of dietary guidelines, were infrequent. Instead, the majority of the policy actions studied were reductionist, focusing only on nutrients (added sugar) rather than the foods or dietary patterns.

**Taxation.** Of the studies included in the review, thirty-eight focused on taxation<sup>(6,19,117–152)</sup>. This includes those that both did and did not directly assess the impact of sugar taxes on NNS consumption and levels in the food supply. In this instance, studies referred to an excise tax – an indirect tax imposed on the manufacture of certain types of goods and products<sup>(153)</sup>. Taxes on added sugar are used to increase the price of a product relative to its low-sugar counterparts, following the economic principle of ‘price elasticity’ (the percentage change in demand caused by a percentage change in price)<sup>(154)</sup>. In this model, less expensive alternatives are thought to be more desirable to consumers, thus reducing the demand for high-sugar products<sup>(154,155)</sup>. At the time of writing, forty-one countries have enacted a SSB tax (excluding the USA, where taxes are state-specific)<sup>(156)</sup>. Generally, SSB taxes (as the name suggests) only apply to SSB, though select countries (including France, Philippines, India and the state of Philadelphia in the USA) also tax beverages containing NNS. Chile is currently the only country to subsidise ‘diet’ beverages, further enhancing the price elasticity between SSB and beverages containing NNS<sup>(157)</sup>.

Few of the studies assessing taxes explored how this intervention may affect NNS consumption or levels in the food supply (*n* 13; Table 4). Despite not directly reporting so, it is likely that the SSB taxes discussed in other studies also had an effect on these outcomes, as encouraging industry to reformulate is one of the key aims of nutrient-specific taxes<sup>(156,158)</sup>. SSB sales decreased in all studies that explored this outcome in response to a tax (Table 4)<sup>(19,119,121,125–127,130,140,142,144,145,152)</sup>. While some

studies (*n* 6) suggested that a tax on SSB increased the purchase of NNS beverages<sup>(19,119,121,126,130,145)</sup>, others (*n* 3) found the opposite<sup>(125,142,152)</sup>, and yet others (*n* 3) found no change in consumption or purchasing behaviour<sup>(127,140,144)</sup>. In four studies, NNS beverages were grouped with all non-SSBs<sup>(19,119,130,144)</sup>. This may confound the results, as the change in non-SSB sales could be attributable to water, milk or juice. In South Africa, Stacey *et al.*<sup>(148)</sup> found that prices for artificially sweetened and low-sugar drinks increased, despite not being affected by the SSB tax, which may have impacted the effect of the tax on beverage purchases overall. Zhong *et al.*<sup>(152)</sup>, Cawley *et al.*<sup>(127)</sup> and Roberto *et al.*<sup>(142)</sup> found decreases in NNS beverage consumption post-tax; however, the tax in Philadelphia (which the studies analysed) also targeted NNS beverages. This reduced the likelihood of consumers substituting SSB with NNS beverages, as there would be no relative change in price elasticity.

The main data source for these studies was scanned labels of products, either by participants in the home or at the point of sale. Though the sample size generated by these methods is extensive, there is an absence of information on food consumed outside the home or grocery store purchases. This is problematic, as a large proportion of ‘soft’ drinks (both NNS and SSB) are likely to be purchased and consumed outside the home<sup>(159,160)</sup>. Additionally, in data sources including Nielsen Homescan Panel Data, participants must scan all groceries at home. The process of recording all purchases can be time consuming, which could result in under-reporting<sup>(161)</sup>.

**Education interventions.** Education-based interventions included media campaigns<sup>(6,137,162–170)</sup>, community education<sup>(171–178)</sup> and education in schools and childcare centres<sup>(179–196)</sup> on the harms of excess added sugar consumption. Of the studies exploring this policy action (*n* 39), only eight (Table 4) addressed the impact that education interventions to reduce added sugar intake may have on NNS consumption and levels in the food supply. While most studies (*n* 5) found that NNS beverage consumption and sales decreased in response to education addressing added sugar consumption<sup>(164,172,185,191,197)</sup>, one study found the opposite<sup>(162)</sup>, and yet two others found no association<sup>(166,198)</sup>.

When analysing responses to the ‘Beverage checklist’ (a guide for beverage selection based on the nutritional value of a drink) in 2012, Luger *et al.*<sup>(172)</sup> found that while the percentage of beverages containing NNS increased initially, by 2017 there was a net decrease of 7%. During this period, added sugar content in beverages decreased significantly, suggesting a lack of substitution of sugar with NNS. In school settings, both Veitch *et al.*<sup>(191)</sup> and Rauba *et al.*<sup>(185)</sup> found that an SSB education campaign directed at children greatly reduced both SSB and NNS beverage consumption. In studies from Farley *et al.*<sup>(164)</sup> and Schwartz *et al.*<sup>(197)</sup> NNS beverage sales decreased in both groups that received anti-SSB messaging and their controls.

Contrastingly, when using text messages and newsletters to promote positive beverage purchases, Zahid & Reicks<sup>(198)</sup> found that while SSB intake decreased, NNS beverage consumption was not affected. Similarly, Morley *et al.*<sup>(166)</sup> found that despite a decrease in SSB intake, there was no change in reported NNS beverage consumption after exposure to the *LiveLighter* campaign (a programme to encourage healthier dietary choices



**Table 4.** Summary of studies assessing the impact of policy actions targeting added sugar consumption on non-nutritive sweetener (NNS) consumption or levels in the food supply

Intervention	Country	Study methods	Sample	n	Time frame	Effect on SSB	Effect on NNS	Degree of NNS change	Reference
SSB tax	Barbados	Interrupted time-series design	Electronic point-of-sale data from one major grocery chain	1161 beverage products	2013–2016 (tax implemented 2015)	↓ Sales	↑ Sales (includes all non-SSB)	5.2 %	Alvarado <i>et al.</i> (2019) <sup>(119)</sup>
SSB tax	UK	Annual cross-sectional study	Nutrient composition data; volume sales data	7377 products	2015–2018 (tax implemented 2018)	↓ Sales	↑ Sales	40 %	Bandy <i>et al.</i> (2020) <sup>(121)</sup>
SSB tax	USA	Meta-analysis	Studies that assessed change in diet drinks after a SSB tax	Three studies	N/A	↓ Sales	↓ Sales	Not provided	Cabrera Escobar <i>et al.</i> (2013) <sup>(125)</sup>
SSB tax	Chile	Correlational research design	Household food purchases obtained from Kantar Worldpanel Chile	2000 households	2013–2015 (tax implemented 2014)	↓ Sales	↑ Sales	10.7 %	Caro <i>et al.</i> (2018) <sup>(126)</sup>
SSB tax	USA (Philadelphia)	Interviews; longitudinal surveys	Exit interviews; household surveys	1305 interviews; 440 surveys	2016–2017 (tax implemented 2017)	↓ Intake	↔ Intake	N/A	Cawley <i>et al.</i> (2019) <sup>(127)</sup>
SSB tax	Mexico	Longitudinal observation study	Nielsen Mexico's Consumer Panel Services (home-scan data)	6253 households	2012–2014 (tax implemented 2014)	↓ Sales	↑ Sales (includes all untaxed beverages)	4 %	Colchero <i>et al.</i> (2016) <sup>(130)</sup>
SSB tax	Mexico	Longitudinal observation study	Nielsen Mexico's Consumer Panel Services (home-scan data)	6645 households	2012–2015 (tax implemented 2014)	↓ Sales	↑ Sales (includes all untaxed beverages)	2.1 %	Colchero <i>et al.</i> (2017) <sup>(119)</sup>
SSB tax	Chile	Quasi-experimental study design	Household food purchases obtained from Kantar Worldpanel Chile	2863 households	2011–2015 (tax implemented 2014)	↓ Sales	↔ Sales	N/A	Nakamura <i>et al.</i> (2018) <sup>(140)</sup>
SSB tax	USA (Philadelphia)	Longitudinal difference-in-differences approach	Commercial retailer sales data	291 stores	2016–2017 (tax implemented 2017)	↓ Sales	↓ Sales	60.2 %	Roberto <i>et al.</i> (2019) <sup>(142)</sup>
SSB tax	Spain (Catalonia)	Longitudinal observation study	Males and females, 12–40 years residing in low-income neighbourhoods of Barcelona (intervention) and Madrid (control)	1929 participants	2017–2018 (tax implemented 2018)	↓ Consumers	↔ Consumers	N/A	Royo-Bordonada <i>et al.</i> (2019) <sup>(144)</sup>
SSB tax	USA (Berkeley)	Correlational research design	Electronic point-of-sale data at 26 stores	16.2 million barcode scans	2013–2016 (tax implemented 2015)	↓ Sales	↑ Sales (includes all non-untaxed beverages)	3.5 %	Silver <i>et al.</i> (2017) <sup>(145)</sup>
SSB tax	South Africa	Longitudinal observation study	Price observations	71 677 observations	2013–2019 (tax implemented 2018)	↑ Prices	↑ Prices	Not provided	Stacey <i>et al.</i> (2019) <sup>(148)</sup>

Drivers, trends and impacts of sweeteners

**Table 4.** (Continued)

Intervention	Country	Study methods	Sample	n	Time frame	Effect on SSB	Effect on NNS	Degree of NNS change	Reference
SSB tax	USA (Philadelphia)	Repeat cross-sectional study	Males and females, 18–64 years	1777 participants	2016–2017 (tax implemented 2017)	↓ Sales	↓ Sales	Not provided	Zhong <i>et al.</i> (2018) <sup>(152)</sup>
Education (media campaign)	USA	Intervention study and rolling cross-sectional survey	Philadelphia parents/primary caregivers with a child between 3 and 16 years	1367 participants	15 months	↓ Intention to consume	↑ Intention to consume	Not provided	Bleakley <i>et al.</i> (2018) <sup>(162)</sup>
Education (media campaign)	USA	Intervention study Telephone surveys	Males and females, 18–45 years	Pre-intervention: 1031 Post-intervention: 1000	15 weeks	↓ Sales	↓ Sales	5.7 %	Farley <i>et al.</i> (2017) <sup>(164)</sup>
Education (beverage checklist)	Austria	Intervention study	Beverages available 2010–2017, using one large outlet in at least three out of nine federal states per each of the four main supermarket chains	2010 – 387 beverages 2017 – 584 beverages	7 years	↓ Sugar content	↓ NNS content	7.0 %	Luger <i>et al.</i> (2018) <sup>(172)</sup>
Education ( <i>LiveLighter</i> media campaign)	Australia	Cohort study	Males and females 25–49 years	Intervention: n 673; comparison: n 730	6 weeks	↓ Intake	↔ Intake	N/A	Morley <i>et al.</i> (2018) <sup>(166)</sup>
Education (school intervention)	USA	Cohort study	Grade 3–5 students	Pre-intervention: 213 Post-intervention: 211	6 months	↓ Intake	↓ Intake	4.6 %	Raubas <i>et al.</i> (2017) <sup>(185)</sup>
Education (media campaign)	USA	Observational experiment	Weekly beverage sales data from supermarkets	Intervention 15; comparison 17	3 years	↓ Sales	↓ Sales	–0.3 litres/d	Schwartz <i>et al.</i> (2017) <sup>(197)</sup>
Education (school intervention)	Netherlands	Clustered RCT	Secondary schools located within 150 km of Amsterdam	18 schools	20 months	↓ Intake	↓ Intake	35.1 %	Veitch <i>et al.</i> (2011) <sup>(191)</sup>
Education (school intervention)	USA	Pre-post-surveys	Primary caregivers with a child 6–12 years	100 parents/caregivers	4 weeks	↓ Intake	↔ Intake	N/A	Zahid & Reicks (2019) <sup>(198)</sup>
Labelling (multiple front-of pack labels)	Australia	Online RCT	18–35 years	1000 participants	2 weeks	↓ Intake	↔ Intake	N/A	Billich <i>et al.</i> (2018) <sup>(199)</sup>
Labelling (posters)	USA	Case-cross-over design and interviews	Purchases made by Black adolescents 12–18 years from six stores located in low-income Black neighbourhoods in Baltimore	4516 purchases	10 months	↓ Sales	↔ Sales	N/A	Bleich <i>et al.</i> (2012) <sup>(200)</sup>
Labelling (posters)	USA	Intervention study	Purchases made by Black adolescents 12–18 years from four corner stores near middle and high schools in Baltimore City	1600 purchases	3 months	↓ Intake	↑ Intake	0.09 %	Bleich <i>et al.</i> (2014) <sup>(203)</sup>





Table 4. (Continued)

Intervention	Country	Study methods	Sample	n	Time frame	Effect on SSB	Effect on NNS	Degree of NNS change	Reference
Labelling (traffic light system)	USA	Interrupted time series	Food outlets in RCHSD in San Diego, CA	Not specified	3 months baseline, 12 months intervention, and 4 months post-intervention	↓ Sales	↓ Sales	Not provided	Hartigan <i>et al.</i> (2017) <sup>(204)</sup>
Labelling (traffic light system)	Belgium	Intervention study	High schools in a radius of 30 km around Brussels	Three schools; 2959 students	7 weeks	↓ Sales	↑ Sales	Not provided	Stamos <i>et al.</i> (2019) <sup>(207)</sup>
Labelling (warning and energy labels)	USA	Cohort intervention study	Males and females 12–18 years	2202 participants	N/A	↓ Intention to purchase	↔ Intention to purchase	N/A	VanEpps & Roberto (2016) <sup>(216)</sup>
Environment (increased unsweetened milk availability in homes)	Chile	RCT	Males and females 8–10 years, SSB drinkers, BMI greater than the 85th percentile for sex and age	93 participants	16 weeks	↓ Intake	↑ Intake	275 ml/d	Albala <i>et al.</i> (2008) <sup>(244)</sup>
Environment (reduced price of NNS beverages in stores)	Australia	RCT	Female primary household shoppers	642 participants	19 months	↑ Sales	↔ Sales	N/A	Ball <i>et al.</i> (2015) <sup>(254)</sup>
Environment (increased SSB price in hospitals)	Australia	Interrupted time series	Males and females, all ages	Participant no. not reported; 1538 beverage sales	17 weeks	↓ Sales	↓ Sales (includes 100 % fruit juice)	27 %	Blake <i>et al.</i> (2018) <sup>(242)</sup>
Environment (reduced SSB availability in leisure centres)	UK	Interrupted time series	Attendees of public leisure centres, all ages	Ranged between 11 916 and 108 393 per month (no total given)	12 months	↓ Sales	↑ Sales	27 %	Breeze <i>et al.</i> (2018) <sup>(246)</sup>
Environment (reduced price of NNS beverages in stores)	Australia	RCT	Customers at remote Northern Territory stores	8515 participants	24 weeks	↑ Intake	↓ Intake	8 %	Brimblecombe <i>et al.</i> (2017) <sup>(250)</sup>
Environment (increased price of SSB)	UK	Interrupted time series	Jamie's Italian Restaurant chain	37 Restaurants	12 weeks	↓ Sales	↓ Sales	7.32 %	Cornelsen <i>et al.</i> (2017) <sup>(131)</sup>
Environment (SSB ban in hospitals)	USA	Intervention study	Food establishments in Nationwide Children's Hospital in Columbus, OH	Seven food outlets, unspecified number of vending machines	12 months	↓ Sales	↓ Sales	17 %	Eneli <i>et al.</i> (2014) <sup>(243)</sup>
Environment (increased low-energy beverage availability in homes)	USA	RCT	9th–10th graders, BMI ≥ 85th percentile for sex and age	217 participants	12 months	↓ Intake	↑ Intake	207 ml/d	Ebbeling <i>et al.</i> (2012) <sup>(245)</sup>
Environment (promotion of low-energy beverages)	USA	RCT	Supermarket sales	Eight supermarkets	6 months	↓ Sales	↓ In-aisle sales ↑ Check-out sales	2 litres/d 0.2 units/d	Foster <i>et al.</i> (2014) <sup>(251)</sup>

Drivers, trends and impacts of sweeteners

Table 4. (Continued)

Intervention	Country	Study methods	Sample	<i>n</i>	Time frame	Effect on SSB	Effect on NNS	Degree of NNS change	Reference
Environment (provision of free fruit)	Norway	Intervention study	Males and females, grades 8–10	9211 participants	2 years	↔ Intake	↔ Intake	N/A	Hovdenak <i>et al.</i> (2019) <sup>(241)</sup>
Environment (provision of free fruit)	Norway	Controlled before/after study	Males and females, 10–12 years	1339 participants	6 years	↓ Intake	↑ Intake	0.1 units/d	Øverby <i>et al.</i> (2012) <sup>(239)</sup>
Environment (reduced SSB availability in schools)	USA	Cohort intervention study	High schools in Maine, USA	Seven schools, 456 participants	9 months	↓ Intake	↓ Intake (for girls)	16 ml/d	Whatley Blum <i>et al.</i> (2008) <sup>(236)</sup>

SSB, sugar-sweetened beverages; ↓, decrease; ↑, increase; N/A, not applicable; ↔, no change; RCT, randomised controlled trial; RCHSD, Rady Children's Hospital-San Diego.

and lifestyles). Finally, in a study from Bleakley *et al.*<sup>(162)</sup>, parents exposed to anti-SSB messaging expressed an increased intention to substitute SSB with NNS beverages for both their children and themselves. Overall, studies that assessed education campaigns to reduce added sugar intake did not examine the potential substitution effect of NNS for sugar. Among those that did, most studies found a decrease in NNS consumption and sales. This may be explained in part by the fact that many of the media campaigns to reduce SSB intake promoted replacing SSB with water.

**Labelling.** Labelling interventions included energy and nutrient-specific labelling<sup>(199–203)</sup>, traffic light labelling (a system wherein foods are graded from green (best choice) to red (limit consumption))<sup>(6,123,204–207)</sup>, other nutrient-based front-of-pack labelling<sup>(6,149,199,208–210)</sup> and warning labels<sup>(6,123,124,211–216)</sup>. Labelling interventions aim to provide consumers with easy-to-understand information regarding micro-/macronutrients and energy within a product, potentially negative effects of a product or its ingredients, and are used to compare one product with another<sup>(217)</sup>. A secondary aim of labelling interventions is to encourage reformulation by the food industry to produce 'healthier' food<sup>(217)</sup>. Of note, labelling of this variety is commonly only applied to processed and ultra-processed foods. Of the studies exploring this policy action (*n* 22), six addressed the impact that labelling may have had on NNS consumption and levels in the food supply (Table 4). While one study found that NNS beverage consumption and sales decreased in response to labelling interventions<sup>(204)</sup>, two found the opposite<sup>(203,207)</sup>, and three others found no association<sup>(199,200,216)</sup>.

When traffic light labelling was used by Hartigan *et al.*<sup>(204)</sup> in a hospital setting, in which NNS beverages and SSB were classified as yellow and red, respectively, sales of both beverages decreased over time. Comparatively, using a similarly designed traffic light system in Belgian high schools, Stamos *et al.*<sup>(207)</sup> found that while SSB sales decreased, NNS beverage sales increased. Though in their 2012 study<sup>(200)</sup>, Bleich *et al.* found no significant change in consumption, in 2014, Bleich *et al.*<sup>(203)</sup> demonstrated that when energy information was presented on beverages, SSB consumption decreased, while NNS beverage consumption increased. When assessing the impact of front-of-pack labels on beverage selection, Billich *et al.*<sup>(199)</sup> found no statistically significant effect of 'negative' sugar labelling on the likelihood of a consumer choosing a NNS beverage. Similarly, a study assessing beverage selection when using SSB warning labels by VanEpps & Roberto<sup>(216)</sup> found no increase in non-labelled beverage consumption, including NNS beverages.

Over half of the studies that assessed labelling did not examine the potential substitution effect of NNS for sugar. Of those that did, the majority showed neither a positive nor negative association between labelling interventions to reduce added sugar consumption and NNS consumption. Similarly to education campaigns, the small sample of studies cannot be used to conclusively support nor deny potential substitution effects of NNS for sugar in both the food supply and consumption.

**Environmental interventions.** Food environment interventions predominantly involved reducing the availability of SSB in schools<sup>(6,123,135,137,149,167,179,184,187,189,190,218–241)</sup>, though interventions were also implemented in hospitals<sup>(242,243)</sup>, homes<sup>(244,245)</sup>,

community centres<sup>(246)</sup>, workplaces<sup>(247,248)</sup> and stores<sup>(131,209,249–254)</sup>. Of the studies exploring this policy action (*n* 49), only twelve (Table 4) addressed the impact that environmental interventions aiming to reduce added sugar intake had on NNS consumption and levels in the food supply. In some regions (including New York City), beverages containing NNS are not permitted for sale in schools, which may limit the number of studies able to assess changes in NNS consumption/sales in response to sugar policy. Similarly, some studies included NNS beverages as a type of SSB. Consequently, assessing responses of NNS products to a policy to reduce added sugar consumption was not feasible<sup>(232)</sup>. While some studies (*n* 4) found that NNS beverage consumption and sales increased in response to policy targeting added sugar<sup>(239,244–246)</sup>, the majority (*n* 6) found the opposite<sup>(131,226,242,243,250,251)</sup>, and two saw no association<sup>(241,254)</sup>.

When free fruit was provided to children's homes, Øverby *et al.*<sup>(239)</sup> found that SSB and NNS beverage consumption decreased and increased, respectively, despite neither beverage being directly targeted by the intervention. Comparatively, Hovdenak *et al.*<sup>(241)</sup> found that supplying fruit to children in schools had no effect on either SSB or NNS beverage intake. Albala *et al.*<sup>(244)</sup> and Ebbeling *et al.*<sup>(245)</sup> found that when access to low-energy beverages in the home was improved, SSB intake decreased, while NNS beverage consumption increased. In a study of beverage availability and consumption in schools, Whatley Blum *et al.*<sup>(226)</sup> observed that reduced availability of SSB was often paired with a reduction in NNS beverage availability. This resulted in decreased consumption of both beverages in the intervention cohort<sup>(226)</sup>. In a hospital setting, Eneli *et al.*<sup>(243)</sup> found that a ban on SSB decreased NNS beverage sales significantly, despite these products being available after the intervention.

Influencing the prices of SSB and NNS beverages produced differing outcomes depending on the study. Blake *et al.*<sup>(242)</sup> and Cornelsen *et al.*<sup>(131)</sup> found that increasing the price of SSB in a supermarket and restaurant, respectively, resulted in decreased sales of both SSB and NNS beverage sales, despite the price increase not extending to the NNS beverages. Comparatively, Breeze *et al.*<sup>(246)</sup> found that when the price for SSB was increased in community leisure centres, though SSB sales decreased by 27 %, sales of NNS beverages increased by the same magnitude. When implementing in-store promotions of NNS and water, Foster *et al.*<sup>(251)</sup> found a decrease in NNS beverage purchases from supermarket aisles, but an increase in those purchased at the checkout. Interestingly, Brimblecombe *et al.*<sup>(250)</sup> found that when subsidising bottled water and NNS beverages, sales of SSB increased, yet sales of subsidised NNS beverages decreased. In a study subsidising the price of fruits, vegetables, water and low-energy beverages, Ball *et al.*<sup>(254)</sup> found no bearing of the intervention on NNS beverage sales.

Though most studies found that food environment interventions to reduce added sugar intake increased the sale and consumption of NNS beverages, the paucity and discordance of study results limit the dependability of this finding. Additionally, as the bulk of studies assessed interventions in the context of schools, results of these studies may not be generalisable to other settings or populations, particularly adults.

**Reformulation.** Reformulation can be used to reduce added sugar by modifying the ingredients in processed food<sup>(255)</sup>. Often, this involves replacing added sugar with other sweeteners (including NNS) to maintain the level of sweetness and palatability. Reformulation activities aim to improve the energy and nutrient intakes of the population without consumers making major changes to their dietary patterns<sup>(255)</sup>. At writing, no country has legislated a mandatory reformulation target for sugar, though voluntary reformulation policies and charters have been seen in countries including France, Switzerland and the UK<sup>(256,257)</sup>. Instead, reformulation targets are often a response to (or in pre-emption of) government policy to reduce added sugar in the food supply<sup>(65,68–70,74,78,80,83,100)</sup>. Six studies discussed reformulation of added-sugar products and the effect on the food supply, including NNS use<sup>(6,141,150,258–260)</sup>. Popkin & Hawkes<sup>(6)</sup> discussed NNS as a potential replacement for sugar in processed food, and commented on the ambiguity of how to include these additives within future policy. Vandevijvere & Vanderlee<sup>(150)</sup> suggested that labelling policies effectively stimulated reformulation by the food industry, and that despite a paucity of evidence, similar incentives are produced by taxes. Ortún *et al.*<sup>(141)</sup> speculated that policy actions to reduce added sugar, including taxes, encourage innovation by the food industry, including reformulation. Welsh *et al.*<sup>(259)</sup> and Borges *et al.*<sup>(260)</sup> reported an increased effort of beverage industries to market 'alternative beverages' (including NNS beverages) as healthier alternatives for consumers. Though Hashem *et al.*<sup>(258)</sup> conducted a meta-analysis which found that reformulation may decrease added sugar intake, how this may affect levels of NNS in the food supply was not examined.

### *The impact of non-nutritive sweeteners on diet quality, food choice and energy intake*

Sixty-four articles focused on the effect of NNS consumption on dietary intakes. Compared with the other sections of this review, industry involvement was prevalent. Of the studies included in this section, approximately 50 % list either industry funding or a conflict of interest relating to the food industry. Of the studies explicitly funded by industry, four stated that their funders had no role in the design, analysis or presentation of the study, twenty-three stated only that the study was 'supported' by industry, and three stated direct involvement of industry in the study.

**Dietary patterns, food, and nutrient consumption.** A summary of articles (*n* 25) related to diet quality is shown as online Supplementary Table S3. Of these studies, fifteen were diet recalls, three were randomised controlled trials (RCT), three were food records, three were observational studies and one was a parallel study. The included articles assessed all three dietary exposure levels: dietary patterns, food groups, and nutrients.

#### (1) Dietary patterns

The effect of NNS consumption on overall dietary patterns was mixed. Some studies found that consumption of NNS was associated with a healthier dietary pattern, characterised as a higher Healthy Eating Index (HEI)-2005 score<sup>(115)</sup>, an increased likelihood to have a 'restrained'<sup>(261)</sup> or 'prudent'<sup>(115,262,263)</sup> eating pattern, or

a higher Nutritional Quality Index (NQI) score (though this was only found in overweight and obese consumers)<sup>(264)</sup>. Moreover, Binkley & Golub<sup>(265)</sup> found that consumers who purchased NNS beverages made healthier food choices generally. Other studies found that NNS consumption was associated with a poorer dietary pattern than non-consumption, including emotional eating (eating in response to negative emotions such as anxiety or loneliness)<sup>(261)</sup>, a lower HEI-2010 score (though only among high-socio-economic status consumers)<sup>(113)</sup> and a decreased likelihood of adhering to a prudent purchasing pattern<sup>(262)</sup>. Piernas *et al.*<sup>(262)</sup> found that NNS consumers were more likely to follow a fast-food/ready-to-eat meal pattern.

## (2) Food groups

Comparably, there was no clear consensus in the literature on the impact of NNS consumption and intake of specific food and nutrient groups. While some studies found that, when compared with non-consumers of NNS, consumers ate more fruit<sup>(115,262,266,267)</sup>, vegetables<sup>(115,262,266,267)</sup>, nuts<sup>(262)</sup> and legumes<sup>(115)</sup>, the opposite was found in other studies<sup>(266,268)</sup>. Moreover, Duffey & Popkin<sup>(269)</sup> found that consumers from the 'vegetable cluster' (a dietary pattern characterised by vegetable consumption) were less likely to drink diet drinks. Drewnowski & Rehm<sup>(115)</sup> found that NNS consumers had a higher intake of whole grains than non-consumers. An intervention by Piernas *et al.*<sup>(268)</sup> found that when compared with a cohort encouraged to drink water, those encouraged to drink NNS beverages did not decrease carbohydrate-rich grains. Yet another study by Piernas *et al.*<sup>(262)</sup> found that consumers of NNS had a higher percentage of energy intake from ready-to-eat cereals.

While Binkley & Golub<sup>(265)</sup> found that dairy product consumption in all product categories declined with increased NNS beverage consumption, others found that NNS consumers had a higher intake of low-fat dairy products<sup>(115,265,270)</sup> and dairy products overall<sup>(70)</sup> than non-consumers. Fowler *et al.*<sup>(40)</sup> found that specifically milk consumption was lower among NNS consumers, though Ca intake was similar. Comparatively, Gibson *et al.*<sup>(266)</sup> found no difference in milk consumption based on beverage consumption patterns. They also observed that consumers of NNS ate more fish than SSB consumers<sup>(266)</sup>, though less than those who consumed no sweetened beverages at all<sup>(266)</sup>. Compared with non-consumers of NNS, consumers were found to have a higher oil intake<sup>(115)</sup>. Additionally, An<sup>(113)</sup> found that, overall, those consuming NNS had a higher energy intake from discretionary foods.

NNS beverage consumers were found to eat more snacks<sup>(99,262,265)</sup> and desserts than other beverage consumer clusters<sup>(262)</sup>, with Binkley & Golub<sup>(265)</sup> suggesting that snacks offset the lower energy of diet beverages. Their study found that NNS consumers were more willing and likely to buy reduced-fat, -sugar and -energy versions of foods than other consumer groups, including milk, ice cream, frozen dinners and salad dressing<sup>(265,270)</sup>. A study by Bleich *et al.*<sup>(99)</sup> in obese adults found that this was particularly true for salty snacks. However, Piernas

*et al.*<sup>(268)</sup> found that NNS consumers actually decreased dessert intake. Sigman-Grant *et al.*<sup>(267)</sup> reported that those that consumed NNS yoghurt, jelly and desserts consumed more of these products than those who consumed the full-sugar versions.

## (3) Nutrients

NNS consumers were found to consume less carbohydrate generally<sup>(70,114,271–275)</sup> and less added sugar<sup>(70,114,115,266,267,271–273,275)</sup> than non-consumers, though Gibson *et al.*<sup>(266)</sup> suggested that this decrease in sugar is owing to the decreased contribution from beverages rather than from the diet overall. Comparatively, Sylvetsky *et al.*<sup>(276)</sup> found that children who consumed NNS beverages had higher intakes of added sugar, total sugar and carbohydrates (when compared with those who drank water). In habitual consumers of NNS, consumption of protein was lower from vegetable sources<sup>(114)</sup> yet higher from animal products<sup>(114,115)</sup>. Other studies found an increase in protein consumption overall compared with non-consumers<sup>(40,49,70,114,266,273,277)</sup>. Compared with non-consumers of NNS, consumers were found to have a higher intake of saturated fats<sup>(40,115,272,277)</sup> and a higher total fat consumption as a percentage of energy intake<sup>(40,273)</sup>. However, some studies found that NNS consumers consumed less energy from discretionary fats<sup>(115,267,270)</sup> and alcohols<sup>(49)</sup>. Generally, studies found that consumers of NNS had higher intakes of Na<sup>(70,115,278)</sup>. Additionally, Bellisle *et al.*<sup>(114)</sup> found that NNS consumers ingested higher amounts of cholesterol than non-consumers. Most studies found no difference in micronutrients between NNS consumers and non-consumers<sup>(114,266,267,271)</sup>, though Winther *et al.*<sup>(278)</sup> found that intake of NNS was associated with a reduced intake of some vitamins.

## Energy intake: (1) long-term studies

Long-term studies (those that assessed intake across more than 1 d) that investigated NNS consumption and energy intake (*n* 23) are shown as online Supplementary Table S4. Generally, NNS beverage consumption was associated with lower overall energy intake, ranging from a reduction of 76 kcal to 781 kcal (318 kJ to 3268 kJ) in average daily energy intake<sup>(40,49,113,114,263,265–267,270,274,279–281)</sup>. In some studies, SSB were included as dietary supplements, and their energy was included in daily totals, which may exaggerate these differences<sup>(274)</sup>. Bleich *et al.*<sup>(99)</sup> found that energy intake from solid food was higher in NNS consumers than those that drank SSB, though only in overweight and obese adults. Healthy-weight populations consuming NNS had a lower energy intake than non-consumers<sup>(99)</sup>. Gibson *et al.*<sup>(266)</sup> found that NNS consumers had a lower intake of energy from food, a difference of approximately 40–50 % when compared with SSB consumers. However, Winther *et al.*<sup>(278)</sup> and Piernas *et al.*<sup>(262,277)</sup> found the opposite, with higher energy intake associated with NNS consumption. Similarly, a study by An<sup>(113)</sup> found that NNS beverages were associated with the second largest increase in energy intake from discretionary foods (second to coffee) among beverage categories. This association was strongest among obese adults<sup>(113)</sup>. Yet other

studies found no clear association between NNS and long-term energy intake<sup>(70,266,273,282,283)</sup>.

Compensatory effects of NNS were found in multiple studies<sup>(70,113,273)</sup>. This compensatory effect was most evident in high-income and -educated groups, which (as highlighted in the previous section) are higher consumers of NNS beverages than their low-socio-economic-status counterparts<sup>(113)</sup>. Leahy *et al.*<sup>(272)</sup> found that consumers of NNS beverages had a comparative energy intake to water consumers, while Stookey *et al.*<sup>(284)</sup> found that water consumption greatly reduced dietary energy intake over time.

The majority of these studies employed a dietary recall method. Whilst the most pragmatic method for this type of research, recalls are associated with desirability bias (in which participants may be dishonest in their responses to impress researchers), unreliability errors and measurement errors, which may affect results<sup>(285)</sup>. Despite these limitations, dietary recalls are often used in nutrition research as they can be culturally sensitive, do not require high levels of literacy, and provide quantitative data<sup>(285,286)</sup>. Additionally, evidence suggests that participants tend to overestimate how healthy their diet is, subsequently underestimating energy, Na, sugar and fat<sup>(286)</sup>.

**Energy intake: (2) short-term studies.** Thirty-four primary studies assessed the effect of a pre-load of NNS on subsequent food intake in a post-intervention meal (online Supplementary Table S5). Six studies found an increase in food intake<sup>(287–292)</sup>, twenty-four saw no significant difference<sup>(271,293–315)</sup> and four studies found a decrease in food intake<sup>(316–319)</sup>. Most participants were either ‘healthy’ or of a ‘normal weight’ (generally referring to a BMI of 18–25 kg/m<sup>2</sup>) despite overweight and obese individuals being the primary consumers of NNS (as described previously). It is interesting to note that of the six studies that found an increase in food intake after a NNS preload, three were funded by the sugar industry<sup>(288,290,291)</sup>, and a fourth was funded by a now fragmented multinational corporation<sup>(287)</sup>. Comparatively, three of the four studies that found a decrease in food intake were published by the same author, who has received direct and indirect funding from organisations including Coca-Cola, Sugar Nutrition and The International Sweeteners Association<sup>(316–318)</sup>. Additionally, these studies administered the NNS in tablet form, mitigating the potentially important effects of sweet taste or satiety of the preload. Overall, of the thirty-four studies that assessed NNS preloads and subsequent food intake, nineteen (or over 50 %) were either directly funded by, received products from, or had authors who had connections with industry<sup>(271,287,288,290,291,293,295–297,301,304–306,308–310,316–318)</sup>.

Fluids were used as the pre-load almost exclusively throughout the studies. NNS beverages may be easier to manipulate in experimental studies, as NNS only need to impart sweetness in a beverage, as opposed to texture and other sensory variables that may be affected by the removal of sugar in other products. For most short-term studies assessing energy intake, consumption behaviour was measured under experimental conditions rather than in free-living populations. This may limit the applicability of the findings in real-world dietary patterns and behaviours<sup>(320)</sup>. Often, food intake was only measured over the course of a single

meal, preventing the evaluation of compensatory effects in the long term. In addition, participants were often blinded to the use of NNS in their samples. In a real-world context, awareness of added sugar and energy content of a food or drink may contribute to compensation.

## Discussion

The aim of the present review was to provide an overview of current NNS food supply and consumption patterns and to evaluate added sugar-reduction policies and their impact on NNS and the impact of NNS on food choice, energy intake and diet quality.

Assessment of the different types of sweeteners in the global food supply, and quantified amounts of sweeteners in products, was limited. It is difficult to measure direct quantities of NNS in the food supply, as many countries do not require the volume of NNS in a product to be declared on the label, only that they are an ingredient<sup>(321)</sup>. Despite comprehensive cross-sectional analysis of which products contain NNS, the trends of NNS use in the food supply are under-researched. There is a general consensus that the number of products containing NNS are increasing<sup>(69,70,72,85,100)</sup>, which may contribute to an overall increased level in the food supply. However, no studies have measured the volume change of NNS in the food supply over time. This is a significant gap in the literature.

Most studies used cross-sectional study designs, thus demonstrating NNS consumption in a snapshot of time only. Due to the numerous different populations and study parameters, comparing these studies to derive consumption trends is not possible. Outside the USA, exploration of the consumption trends of NNS is limited. In many countries, national diet surveys are sporadic, and do not have up-to-date information on current rates of consumption. This is especially important for NNS, as there is the potential for a rapid increase in consumption given the accumulative legislative actions (particularly SSB taxes) to reduce added sugar in the food supply. Further research is needed to assess contemporary trends and patterns of NNS consumption globally.

High education/socio-economic status may be associated with NNS consumption as these consumers are typically more health-focused, and may desire low-energy alternatives<sup>(322)</sup>. Additionally, women may be more likely to consume NNS than men, as a larger proportion of ‘diet’ or ‘lite’ products are marketed to this group<sup>(63)</sup>. Women are also typically more likely to be on a ‘diet’ than men, thus may be more likely to choose lower-energy products<sup>(323)</sup>. One contradiction throughout the studies is that those who are overweight/obese are more likely to consume NNS than those with a healthy BMI. This could be for many reasons. First, these populations may be more likely to be the target of diet campaigns (NNS are prevalent in diet foods)<sup>(324)</sup>. Second, the results may be affected by reverse causality; those who are overweight aim to reduce their energy intake by consuming diet/low-energy food, rather than this food contributing to obesity<sup>(278,325,326)</sup>. Third, individuals may use the consumption of NNS as a rationale to make unhealthy food choices or to consume larger portion sizes as these products have less energy than their full-sugar counterparts<sup>(99,326,327)</sup>.

While a broad range of policy actions targeting added sugar consumption was discussed, the underlying political factors that shape these policies, particularly in terms of the lack of holistic policy actions implemented globally, were not explored. Though some policy actions focused on 'discretionary' food, most policy actions targeted sugar as a nutrient, as opposed to suggesting a reduction in ultra-processed foods generally or promoting whole food consumption. Though broader national food policies may comprise policy actions that target different parts of the food supply, the results of this study demonstrate that the majority are nutrient-focused. As public health policy has an impact on the food supply and consequently consumption patterns, understanding why particular types of policy actions are promoted and implemented over others is imperative.

In general, the potential impact of these policy actions on NNS was not widely considered. The studies that did assess this outcome had mixed results. Though taxation seemingly increased NNS in the food supply in most studies, the opposite was true in others. Comparatively, education campaigns to reduce added sugar consumption were associated with a decrease in NNS purchases and intakes; yet others find the opposite, or no effect. Inconsistent associations were found for education labelling and food environment interventions. However, given the paucity of studies that explored these impacts, the conclusions that can be drawn are limited. While most studies were experimental in nature, the types of methods used, sample sizes and time periods analysed varied greatly. Furthermore, the impact of each policy action on NNS consumption can only be described as an association, not causative, as other factors may have made an impact on consumption rates. It is important to note that based on the available evidence it is not possible to suggest that one single policy action is the sole trigger for a change in added sugar or NNS consumption. Rather, an interaction between policy actions is likely to be the cause. Further research is needed to demonstrate how policy actions may have an impact on levels of NNS in the food supply, and to what magnitude.

Compared with the other sections of this review, industry involvement was prevalent in studies assessing the impact of NNS consumption on dietary intakes. Of the studies included in this section, approximately 50 % list either industry funding or a conflict of interest relating to the food industry. This involvement is a cause for concern, as previous studies suggest that when research is sponsored by the sweetener industry, both results and conclusions are more likely to be favourable towards NNS<sup>(328)</sup>. Comparatively, when studies were funded or supported by the sugar industry, the reverse was found<sup>(328)</sup>. The bias found in industry-sponsored studies is a well-documented issue in nutrition research, and may potentially undermine the results of the present review<sup>(328–331)</sup>. Greater research funding from governments and other funding agencies is needed to avoid a reliance on industry-funded analyses in the case of NNS.

The reviewed cross-sectional studies of the impact of NNS intake on diet quality were only able to show a correlative effect, not causative outcomes. How products containing NNS may create substitution effects in the diet, i.e. displacing one food for another, was not explored. This may be due to the limitations of the data sources used; large epidemiological studies, while useful for exploring the associations and potential impacts of NNS on overall dietary balance, do not explore consumer behaviour in

terms of food choice and direct substitution. Sample data were often limited, encompassing only a few days of intake, which may not be representative of usual consumption patterns. In addition, most studies used a self-administered diet questionnaire to obtain data. Participant bias, recall bias and social-desirability bias may make an impact on the validity of these results<sup>(285,332)</sup>. An additional limitation of food composition databases is their inability to accurately capture all NNS in the food supply; thus consumers may be assigned to clusters incorrectly. The metric used to determine the healthiness of a diet varied between studies, including HEI scores (including multiple iterations), Nutritional Quality Index (NQI) scores and the defining of food pattern clusters (for example, vegetable cluster, breakfast cluster). Additionally, the clustering of participants varied throughout the literature – while some participants were clustered as binary 'users' or 'non-users', others were further classified by dietary pattern ('prudent' or 'Western'). Given these limitations, developing and evaluating biomarkers for NNS intake would be a useful tool to monitor NNS consumption in the future.

In studies that assessed dietary patterns, there was no differentiation between types of NNS. Most studies assessed dietary patterns in relation to the consumption of NNS beverages, as opposed to all products containing NNS. This could be for many reasons. Beverages are the primary source of NNS in most diets<sup>(74)</sup>. Additionally, they are a well-known source of NNS to consumers, who may be more likely to recall them during FFQ or dietary interviews as opposed to other NNS-containing items, including sauces and dairy products. This is a considerable limitation of the literature, as NNS are becoming prevalent in food sources including yoghurts and desserts and are found across a wide variety of products in the food supply.

Overall, while food regulators and epidemiologists often focus predominantly on the immediate safety and toxicological aspects of NNS as opposed to the impact on dietary patterns, the progression of these additives in the food supply may be a powerful marker of the reductionist approach to public health that currently prevails in policy making. Consumer behaviour and food choice are greatly influenced by the food environment and food supply, which have been shaped by the current reductionist approach to public health. From the findings of the present review, questions can be raised regarding the fundamental effectiveness of current policy approaches at tackling the underlying causes of chronic disease. While they may reduce added sugar intake, whether these policies reduce the consumption of ultra-processed food, improve diet quality and improve population health is unclear. Fundamentally, reductionist policy actions can be seen as a marker for the 'business-as-usual approach' to public health and safety, and therefore do not target the underlying issues with our current global foods system.

### *Limitations and future directions*

The present review was limited by the exclusion of studies published in languages other than English, particularly as countries in South and Latin America have been leaders in policy actions aiming to reduce added sugar reduction. Additionally, there is the potential for demonstrations of the relationship between

policy to reduce added sugar consumption and increases in NNS in the food supply from non-academic sources including industry documents or government reports that have not been included in the present review.

The present review highlighted many areas for future research. While a range of policy actions has been implemented to reduce added sugar intake, the potential impact of the policies on levels of NNS in the food supply is unclear and warrants further exploration. This includes a lack of research on the different effects of reductionist or holistic policies, as well as those that target either nutrients, food, dietary pattern of food systems, and on combinations of different policy actions on NNS in the food supply. The vast majority of studies included in this review explored high-income countries, despite the potential for changes in the consumption of ultra-processed food in middle-low income countries (particularly in response to the nutrition transition)<sup>(333,334)</sup>. Overall, there is some evidence to indicate that consumption of NNS is increasing in some contexts, though a global analysis of consumption trends is proposed. NNS are widely available in the food supply, especially in beverages, dairy products and confectionery. However, trends in the reformulation of different product categories, and differences between geographical locations and economy-income levels require further study. Research examining how the increased availability of low-sugar discretionary products affects global diets is limited, particularly potential substitution effects of low-sugar beverages for water and/or milk from the diet.

### Conclusion

A range of policy actions has been implemented to reduce added sugar intake globally. The potential impact of these policy actions on NNS-related food supply changes and consumption has not been satisfactorily determined. Most of these policy actions were downstream in nature, potentially encouraging reformulation of individual food products as opposed to improving food systems or dietary patterns. The underlying political factors that shape these policies, and the implementation of reductionist policy actions, have not been explored. NNS were found in an extensive range of products across the food supply, and consumption of NNS has increased over the last two decades in some countries. The literature exploring how NNS consumption has an impact on overall dietary balance was mixed and potentially influenced by industry-funded research. The potential substitution effect of reformulated, ultra-processed food containing NNS for nutritious whole foods was unclear. It is therefore important for future research to determine why nutrient-focused policy actions are championed over others, what their impact is on the food supply and subsequently, how consumption and dietary intakes are affected.

### Acknowledgements

The present review was funded by an Australian Government Research Training Program.

The authors' responsibilities were as follows: M. A. L. conceived the original topic for investigation and its aims. All authors

were responsible for the conceptualisation of the paper; C. R. was responsible for the literature search, data analysis and drafted the manuscript; K. S. was also responsible for literature screening, M. A. L., C. G., K. S. and P. B. provided a critical review of the paper. All authors contributed to and agreed on the final version of the manuscript.

There are no conflicts of interest.

### Supplementary material

To view supplementary material for this article, please visit <https://doi.org/10.1017/S0954422420000268>

### References

1. Afshin A, Sur PJ, Fay KA, *et al.* (2019) Health effects of dietary risks in 195 countries, 1990–2017: a systematic analysis for the Global Burden of Disease Study 2017. *Lancet* **393**, 1958–1972.
2. National Health and Medical Research Council (2013) *Australian Dietary Guidelines*. Canberra: National Health and Medical Research Council.
3. Hawkes C, Jewell J & Allen K (2013) A food policy package for healthy diets and the prevention of obesity and diet-related non-communicable diseases: the NOURISHING framework. *Obes Rev* **14**, 159–168.
4. Herforth A, Arimond M, Álvarez-Sánchez C, *et al.* (2019) A global review of food-based dietary guidelines. *Adv Nutr* **10**, 590–605.
5. Food Standards Australia New Zealand (2016) *Determining the Amount of Added Sugars and Free Sugars in Foods Listed in the AUSNUT 2011–13 Dataset*. Canberra: Australian Government.
6. Popkin BM & Hawkes C (2016) Sweetening of the global diet, particularly beverages: patterns, trends, and policy responses. *Lancet Diabetes Endocrinol* **4**, 174–186.
7. Rikkers W, Lawrence D, Hafekost K, *et al.* (2013) Trends in sugar supply and consumption in Australia: is there an Australian paradox? *BMC Public Health* **13**, 668.
8. World Health Organization (2017) *Guideline: Sugars Intake for Adults and Children*. Geneva: WHO.
9. United States Department of Health and Human Services & United States Department of Agriculture (2015) *2015–2020 Dietary Guidelines for Americans*, 8th ed. Washington, DC: USDA.
10. Azaïs-Braesco V, Sluik D, Maillot M, *et al.* (2017) A review of total & added sugar intakes and dietary sources in Europe. *Nutr J* **16**, 6.
11. Steele EM, Baraldi LG, da Costa Louzada ML, *et al.* (2016) Ultra-processed foods and added sugars in the US diet: evidence from a nationally representative cross-sectional study. *BMJ Open* **6**, e009892.
12. Sanigorski AM, Bell AC & Swinburn BA (2007) Association of key foods and beverages with obesity in Australian schoolchildren. *Public Health Nutr* **10**, 152–157.
13. Hu FB (2013) Resolved: there is sufficient scientific evidence that decreasing sugar-sweetened beverage consumption will reduce the prevalence of obesity and obesity-related diseases. *Obes Rev* **14**, 606–619.
14. Scientific Advisory Committee on Nutrition (2015) *Carbohydrates and Health*. London: TSO.
15. Te Morenga L, Mallard S & Mann J (2013) Dietary sugars and body weight: systematic review and meta-analyses of randomised controlled trials and cohort studies. *BMJ* **346**, e7492.

16. Lang T & Rayner G (2007) Overcoming policy cacophony on obesity: an ecological public health framework for policymakers. *Obes Rev* **8**, 165–181.
17. Dixon H, Borland R, Segan C, *et al.* (1998) Public reaction to Victoria's "2 Fruit 'n' 5 Veg Every Day" campaign and reported consumption of fruit and vegetables. *Prev Med* **27**, 572–582.
18. Leroy P, Requillart V, Soler L, *et al.* (2016) An assessment of the potential health impacts of food reformulation. *Eur J Clin Nutr* **70**, 694–699.
19. Colchero MA, Rivera-Dommarco J, Popkin BM, *et al.* (2017) In Mexico, evidence of sustained consumer response two years after implementing a sugar-sweetened beverage tax. *Health Aff (Millwood)* **36**, 564–571.
20. Hawkes C (2010) The worldwide battle against soft drinks in schools. *Am J Prev Med* **38**, 457–461.
21. Brinsden H & Lobstein T (2013) Comparison of nutrient profiling schemes for restricting the marketing of food and drink to children. *Pediatr Obes* **8**, 325–337.
22. Crane S, Egan M & Browne J (2016) Aboriginal Rethink Sugary Drink campaign. In International Social Marketing Conference 2006: Societal Wellbeing. Conference Proceedings, pp. 112–117. <https://www.aasm.org.au/wp-content/uploads/2017/06/AASM-2016-ISM-Conference-Proceedings.pdf> (accessed November 2020).
23. Thow AM & Hawkes C (2014) Global sugar guidelines: an opportunity to strengthen nutrition policy. *Public Health Nutr* **17**, 2151–2155.
24. Peters S, Dunford E, Jones A, *et al.* (2017) Incorporating added sugar improves the performance of the health star rating front-of-pack labelling system in Australia. *Nutrients* **9**, 701.
25. Federoff HJ & Gostin LO (2009) Evolving from reductionism to holism: is there a future for systems medicine? *JAMA* **302**, 994–996.
26. Fardet A & Rock E (2015) From a reductionist to a holistic approach in preventive nutrition to define new and more ethical paradigms. *Healthcare* **3**, 1054–1063.
27. Scrinis G (2013) *Nutritionism: The Science and Politics of Dietary Advice*, 1st ed. New York: Columbia University Press.
28. Schleifer D (2012) The perfect solution: how *trans* fats became the healthy replacement for saturated fats. *Technol Cult* **53**, 94–119.
29. Remig V, Franklin B, Margolis S, *et al.* (2010) *Trans* fats in America: a review of their use, consumption, health implications, and regulation. *J Am Diabetes Assoc* **110**, 585–592.
30. Micha R & Mozaffarian D (2009) *Trans* fatty acids: effects on metabolic syndrome, heart disease and diabetes. *Nat Rev Endocrinol* **5**, 335.
31. Kavanagh K, Jones KL, Sawyer J, *et al.* (2007) *Trans* fat diet induces abdominal obesity and changes in insulin sensitivity in monkeys. *Obesity* **15**, 1675–1684.
32. Mensink RP, Sanders TA, Baer DJ, *et al.* (2016) The increasing use of interesterified lipids in the food supply and their effects on health parameters. *Adv Nutr* **7**, 719–729.
33. Mills CE, Hall WL & Berry SEE (2017) What are interesterified fats and should we be worried about them in our diet? *Nutr Bull* **42**, 153–158.
34. Joint FAO/WHO Expert Committee on Food Additives, World Health Organization & Food and Agriculture Organization of the United Nations (1968) *Specifications for the Identity and Purity of Food Additives and Their Toxicological Evaluation: Some Flavouring Substances and Non-Nutritive Sweetening Agents: Eleventh Report of the Joint FAO/WHO Expert Committee on Food Additives, Geneva, 21–28 August 1967*. Geneva: World Health Organization.
35. Chattopadhyay S, Raychaudhuri U & Chakraborty R (2014) Artificial sweeteners – a review. *J Food Sci Technol* **51**, 611–621.
36. Grembecka M (2015) Sugar alcohols – their role in the modern world of sweeteners: a review. *Eur Food Res Technol* **241**, 1–14.
37. Sylvetsky AC, Hiedacavage A, Shah N, *et al.* (2019) From biology to behavior: a cross-disciplinary seminar series surrounding added sugar and low-calorie sweetener consumption. *Obes Sci Pract* **5**, 203–219.
38. Toews I, Lohner S, de Gaudry DK, *et al.* (2019) Association between intake of non-sugar sweeteners and health outcomes: systematic review and meta-analyses of randomised and non-randomised controlled trials and observational studies. *BMJ* **364**, k4718.
39. Azad MB, Abou-Setta AM, Chauhan BF, *et al.* (2017) Nonnutritive sweeteners and cardiometabolic health: a systematic review and meta-analysis of randomized controlled trials and prospective cohort studies. *CMAJ* **189**, E929–E939.
40. Fowler SP, Williams K, Resendez RG, *et al.* (2008) Fueling the obesity epidemic? Artificially sweetened beverage use and long-term weight gain. *Obesity* **16**, 1894–1900.
41. Miller PE & Perez V (2014) Low-calorie sweeteners and body weight and composition: a meta-analysis of randomized controlled trials and prospective cohort studies. *Am J Clin Nutr* **100**, 765–777.
42. Stellman SD & Garfinkel L (1986) Artificial sweetener use and one-year weight change among women. *Prev Med* **15**, 195–202.
43. Ruiz-Ojeda FJ, Plaza-Díaz J, Sáez-Lara MJ, *et al.* (2019) Effects of sweeteners on the gut microbiota: a review of experimental studies and clinical trials. *Adv Nutr* **10**, S31–S48.
44. O'Connor L, Imamura F, Lentjes MA, *et al.* (2015) Prospective associations and population impact of sweet beverage intake and type 2 diabetes, and effects of substitutions with alternative beverages. *Diabetologia* **58**, 1474–1483.
45. Bhupathiraju SN, Pan A, Malik VS, *et al.* (2012) Caffeinated and caffeine-free beverages and risk of type 2 diabetes. *Am J Clin Nutr* **97**, 155–166.
46. Peters JC, Wyatt HR, Foster GD, *et al.* (2014) The effects of water and non-nutritive sweetened beverages on weight loss during a 12-week weight loss treatment program. *Obesity* **22**, 1415–1421.
47. Blackburn GL, Kanders BS, Lavin PT, *et al.* (1997) The effect of aspartame as part of a multidisciplinary weight-control program on short- and long-term control of body weight. *Am J Clin Nutr* **65**, 409–418.
48. Imamura F, O'Connor L, Ye Z, *et al.* (2015) Consumption of sugar sweetened beverages, artificially sweetened beverages, and fruit juice and incidence of type 2 diabetes: systematic review, meta-analysis, and estimation of population attributable fraction. *BMJ* **351**, h3576.
49. Raben A, Vasilaras TH, Møller AC, *et al.* (2002) Sucrose compared with artificial sweeteners: different effects on *ad libitum* food intake and body weight after 10 wk of supplementation in overweight subjects. *Am J Clin Nutr* **76**, 721–729.
50. Nichol AD, Holle MJ & An R (2018) Glycemic impact of non-nutritive sweeteners: a systematic review and meta-analysis of randomized controlled trials. *Eur J Clin Nutr* **72**, 796–804.
51. Madjd A, Taylor MA, Delavari A, *et al.* (2015) Effects on weight loss in adults of replacing diet beverages with water during a hypoenergetic diet: a randomized, 24-wk clinical trial. *Am J Clin Nutr* **102**, 1305–1312.
52. Kuzma JN, Cromer G, Hagman DK, *et al.* (2015) No difference in *ad libitum* energy intake in healthy men and women consuming beverages sweetened with fructose, glucose, or high-fructose corn syrup: a randomized trial. *Am J Clin Nutr* **102**, 1373–1380.
53. Mishra A, Ahmed K, Froghi S, *et al.* (2015) Systematic review of the relationship between artificial sweetener consumption



- and cancer in humans: analysis of 599,741 participants. *Int J Clin Pract* **69**, 1418–1426.
54. Gallus S, Scotti L, Negri E, *et al.* (2006) Artificial sweeteners and cancer risk in a network of case-control studies. *Ann Oncol* **18**, 40–44.
  55. Mawhinney DB, Young RB, Vanderford BJ, *et al.* (2011) Artificial sweetener sucralose in US drinking water systems. *Environ Sci Technol* **45**, 8716–8722.
  56. Scheurer M, Storck FR, Brauch H-J, *et al.* (2010) Performance of conventional multi-barrier drinking water treatment plants for the removal of four artificial sweeteners. *Water Res* **44**, 3573–3584.
  57. Brownell KD & Koplan JP (2011) Front-of-package nutrition labeling – an abuse of trust by the food industry? *New Engl J Med* **364**, 2373–2375.
  58. Green BN, Johnson CD & Adams A (2006) Writing narrative literature reviews for peer-reviewed journals: secrets of the trade. *J Chiropr Med* **5**, 101–117.
  59. Popay J, Roberts H, Sowden A, *et al.* (2006) *Guidance on the Conduct of Narrative Synthesis in Systematic Reviews: A Product from the ESRC Methods Programme: Version 1*. Lancaster: Lancaster University.
  60. Ferrari R (2015) Writing narrative style literature reviews. *Med Writing* **24**, 230–235.
  61. Glaser BG (1965) The constant comparative method of qualitative analysis. *Soc Probl* **12**, 436–445.
  62. Fram SM (2013) The constant comparative analysis method outside of grounded theory. *Qual Rep* **18**, 1–25.
  63. Durán Agüero S, Noel MDR, Arrivillaga KC, *et al.* (2017) Comparison of nonnutritive artificial sweetener consumption among university students in Latin American: multicentric study. *Arch Latinoam Nutr* **67**, 178–186.
  64. Arcella D, Le Donne C, Piccinelli R, *et al.* (2004) Dietary estimated intake of intense sweeteners by Italian teenagers. Present levels and projections derived from the INRAN-RM-2001 food survey. *Food and Chem Toxicol* **42**, 677–685.
  65. Buffini M, Gosciny S, Van Looc J, *et al.* (2018) Dietary intakes of six intense sweeteners by Irish adults. *Food Addit Contam Part A Chem Anal Control Expo Risk Assess* **35**, 425–438.
  66. Chung MS, Suh HJ, Yoo W, *et al.* (2005) Daily intake assessment of saccharin, stevioside, D-sorbitol and aspartame from various processed foods in Korea. *Food Addit Contam* **22**, 1087–1097.
  67. Dellavalle DM, Malek AM, Hunt KJ, *et al.* (2018) Low-calorie sweeteners in foods, beverages, and food and beverage additions: NHANES 2007–2012. *Curr Dev Nutr* **2**, 5.
  68. Figueiredo LD, Scapin T, Fernandes AC, *et al.* (2018) Where are the low-calorie sweeteners? An analysis of the presence and types of low-calorie sweeteners in packaged foods sold in Brazil from food labelling. *Public Health Nutr* **21**, 447–453.
  69. Garavaglia MB, Garcia VR, Zapata MME, *et al.* (2018) Non-nutritive sweeteners: children and adolescent consumption and food sources. *Arch Argent Pediatr* **116**, 186–191.
  70. Grech A, Kam CO, Gemming L, *et al.* (2018) Diet-quality and socio-demographic factors associated with non-nutritive sweetener use in the Australian population. *Nutrients* **10**, 833.
  71. Janvier S, Gosciny S, Donne CL, *et al.* (2015) Low-calorie sweeteners in food and food supplements on the Italian market. *Food Addit Contam Part B Surveill* **8**, 298–308.
  72. Le Donne C, Mistura L, Gosciny S, *et al.* (2017) Assessment of dietary intake of 10 intense sweeteners by the Italian population. *Food Chem Toxicol* **102**, 186–197.
  73. Ng SW, Slining MM & Popkin BM (2012) Use of caloric and noncaloric sweeteners in US consumer packaged foods, 2005–2009. *J Acad Nutr Diet* **112**, 1828–1834.
  74. Sylvestsky AC, Jin YC, Clark EJ, *et al.* (2017) Consumption of low-calorie sweeteners among children and adults in the United States. *J Acad Nutr Diet* **117**, 441–448.
  75. Zyglis A, Wasik A, Kot-Wasik A, *et al.* (2012) The content of high-intensity sweeteners in different categories of foods available on the Polish market. *Food Addit Contam Part A Chem Anal Control Expo Risk Assess* **29**, 1391–1401.
  76. Pielak M, Czarniecka-Skubina E, Trafiaek J, *et al.* (2019) Contemporary trends and habits in the consumption of sugar and sweeteners – a questionnaire survey among Poles. *Int J Environ Res Public Health* **16**, 1164–1164.
  77. de Lourdes Samaniego-Vaesken M, Partearroyo T, Cano A, *et al.* (2019) Novel database of declared low- and no-calorie sweeteners from foods and beverages available in Spain. *J Food Comp Anal* **82**, 103234.
  78. Dunford EK, Taillie LS, Miles DR, *et al.* (2018) Non-nutritive sweeteners in the packaged food supply – an assessment across 4 countries. *Nutrients* **10**, 257.
  79. Vin K, Connolly A, McCaffrey T, *et al.* (2013) Estimation of the dietary intake of 13 priority additives in France, Italy, the UK and Ireland as part of the FACET project. *Food Addit Contam Part A Chem Anal Control Expo Risk Assess* **30**, 2050–2080.
  80. Ha M-S, Ha S-D, Choi S-H, *et al.* (2013) Assessment of exposure of Korean consumers to acesulfame K and sucralose using a stepwise approach. *Int J Food Sci Nutr* **64**, 715–723.
  81. Probst YC, Dengate A, Jacobs J, *et al.* (2017) The major types of added sugars and non-nutritive sweeteners in a sample of Australian packaged foods. *Public Health Nutr* **20**, 3228–3233.
  82. Durán Agüero S, Oñateb G & Riverac PH (2014) Consumption of non-nutritive sweeteners and nutritional status in 10–16 year old students. *Arch Argent Pediatr* **12**, 207–214.
  83. Ha MS, Ha SD, Choi SH, *et al.* (2013) Assessment of Korean consumer exposure to sodium saccharin, aspartame and stevioside. *Food Addit Contam Part A Chem Anal Control Expo Risk Assess* **30**, 1238–1247.
  84. Hedrick VE, Passaro EM, Davy BM, *et al.* (2017) Characterization of non-nutritive sweetener intake in rural southwest Virginian adults living in a health-disparate region. *Nutrients* **9**, 757.
  85. Lee Y, Do B, Lee G, *et al.* (2017) Simultaneous determination of sodium saccharin, aspartame, acesulfame-K and sucralose in food consumed in Korea using high-performance liquid chromatography and evaporative light-scattering detection. *Food Addit Contam Part A Chem Anal Control Expo Risk Assess* **34**, 666–677.
  86. Lino C, Costa I, Pena A, *et al.* (2008) Estimated intake of the sweeteners, acesulfame-K and aspartame, from soft drinks, soft drinks based on mineral waters and nectars for a group of Portuguese teenage students. *Food Addit Contam Part A Chem Anal Control Expo Risk Assess* **25**, 1291–1296.
  87. Martyn DM, Nugent AP, McNulty BA, *et al.* (2016) Dietary intake of four artificial sweeteners by Irish pre-school children. *Food Addit Contam Part A Chem Anal Control Expo Risk Assess* **33**, 592–602.
  88. Mesirow MSC & Welsh JA (2015) Changing beverage consumption patterns have resulted in fewer liquid calories in the diets of US children: National Health and Nutrition Examination Survey 2001–2010. *J Acad Nutr Diet* **115**, 559–566.e4.
  89. Piernas C, Ng SW & Popkin B (2013) Trends in purchases and intake of foods and beverages containing caloric and low-calorie sweeteners over the last decade in the United States. *Pediatr Obes* **8**, 294–306.
  90. Tayel DI, Khamis NA & Darwish OA (2017) Artificial sweeteners consumption among Alexandria University students, Egypt. *J High Institute Public Health* **47**, 1–7.



91. Sjöberg AM & Penttilä PL (1988) Intake of saccharin and cyclamate from Finnish foods between 1979 and 1985. *Z Lebensm Unters Forsch* **186**, 197–200.
92. Huizinga O & Hubert M (2017) The content of caloric and non-caloric sweeteners in soft drinks in Germany. *Obes Med* **6**, 11–14.
93. Tennant DR & Vlachou A (2019) Potential consumer exposures to low/no calorie sweeteners: a refined assessment based upon market intelligence on use frequency, and consideration of niche applications. *Food Addit Contam Part A Chem Anal Control Expo Risk Assess* **36**, 1173–1183.
94. Boulton J, Hashem KM, Jenner KH, *et al.* (2016) How much sugar is hidden in drinks marketed to children? A survey of fruit juices, juice drinks and smoothies. *BMJ Open* **6**, e010330.
95. Kim M, Lee G, Lim HS, *et al.* (2017) Safety assessment of 16 sweeteners for the Korean population using dietary intake monitoring and poundage method. *Food Addit Contam Part A Chem Anal Control Expo Risk Assess* **34**, 1500–1509.
96. Meenakshi T, Khanna SK & Mukul D (2006) Usage of saccharin in food products and its intake by the population of Lucknow, India. *Food Addit Contam* **23**, 1265–1275.
97. Leclercq C, Berardi D, Sorbillo MR, *et al.* (1999) Intake of saccharin, aspartame, acesulfame K and cyclamate in Italian teenagers: present levels and projections. *Food Addit Contam* **16**, 99–109.
98. Sylvetsky AC, Welsh JA, Brown RJ, *et al.* (2012) Low-calorie sweetener consumption is increasing in the United States. *Am J Clin Nutr* **96**, 640–646.
99. Bleich SN, Wolfson JA, Vine S, *et al.* (2014) Diet-beverage consumption and caloric intake among US adults, overall and by body weight. *Am J Public Health* **104**, e72–e78.
100. Bolt-Evensen K, Vik FN, Stea TH, *et al.* (2018) Consumption of sugar-sweetened beverages and artificially sweetened beverages from childhood to adulthood in relation to socioeconomic status – 15 years follow-up in Norway. *Int J Behav Nutr Phys Act* **15**, 8.
101. Drewnowski A & Rehm CD (2015) Socio-demographic correlates and trends in low-calorie sweetener use among adults in the United States from 1999 to 2008. *Eur J Clin Nutr* **69**, 1035–1041.
102. Mattes RD & Popkin BM (2008) Nonnutritive sweetener consumption in humans: effects on appetite and food intake and their putative mechanisms. *Am J Clin Nutr* **89**, 1–14.
103. Fakhouri TH, Kit BK & Ogden CL (2012) *Consumption of Diet Drinks in the United States, 2009–2010*. NCHS Data Brief no. 109. Hyattsville, MD: National Center for Health Statistics.
104. Bär A & Biermann C (1992) Intake of intense sweeteners in Germany. *Z Ernährungswiss* **31**, 25–39.
105. Diogo JS, Silva LS, Pena A, *et al.* (2013) Risk assessment of additives through soft drinks and nectars consumption on Portuguese population: a 2010 survey. *Food Chem Toxicol* **62**, 548–553.
106. Huvaere K, Vandevijvere S, Hasni M, *et al.* (2012) Dietary intake of artificial sweeteners by the Belgian population. *Food Addit Contam Part A Chem Anal Control Expo Risk Assess* **29**, 54–65.
107. Mancini F, Paul D, Gauvreau J, *et al.* (2015) Dietary exposure to benzoates (E210–E213), parabens (E214–E219), nitrites (E249–E250), nitrates (E251–E252), BHA (E320), BHT (E321) and aspartame (E951) in children less than 3 years old in France. *Food Addit Contam Part A Chem Anal Control Expo Risk Assess* **32**, 293–306.
108. Leth T, Fabricius N & Fagt S (2007) Estimated intake of intense sweeteners from non-alcoholic beverages in Denmark. *Food Addit Contam* **24**, 227–235.
109. Moskowitz HR (1970) Sweetness and intensity of artificial sweeteners. *Percept Psychophys* **8**, 40–42.
110. Chia CW, Shardell M, Tanaka T, *et al.* (2016) Chronic low-calorie sweetener use and risk of abdominal obesity among older adults: a cohort study. *PLOS ONE* **11**, e0167241.
111. Malek AM, Hunt KJ, Dellavalle DM, *et al.* (2018) Reported consumption of low-calorie sweetener in foods, beverages, and food and beverage additions by US adults: NHANES 2007–2012. *Curr Dev Nutr* **2**, nzy054.
112. Monteiro LS, Hassan BK, Rodrigues PRM, *et al.* (2018) Use of table sugar and artificial sweeteners in Brazil: National Dietary Survey 2008–2009. *Nutrients* **10**, 295.
113. An R (2016) Beverage consumption in relation to discretionary food intake and diet quality among US adults, 2003 to 2012. *J Acad Nutr Diet* **116**, 28–37.
114. Bellisle F, Altenburg de Assis M, Fieux B, *et al.* (2001) Use of ‘light’ foods and drinks in French adults: biological, anthropometric and nutritional correlates. *J Hum Nutr Diet* **14**, 191–206.
115. Drewnowski A & Rehm CD (2014) Consumption of low-calorie sweeteners among U.S. adults is associated with higher Healthy Eating Index (HEI 2005) scores and more physical activity. *Nutrients* **6**, 4389–4403.
116. Jin Y, Sylvetsky AC, Kandula NR, *et al.* (2018) Prevalence of low-calorie sweetener intake in South Asian adults. *Nutr Health* **24**, 203–209.
117. Acton RB, Jones AC, Kirkpatrick SI, *et al.* (2019) Taxes and front-of-package labels improve the healthiness of beverage and snack purchases: a randomized experimental marketplace. *Int J Behav Nutr Phys Act* **16**, 46.
118. Alvarado M, Kostova D, Suhrcke M, *et al.* (2017) Trends in beverage prices following the introduction of a tax on sugar-sweetened beverages in Barbados. *Prev Med* **105**, S23–S25.
119. Alvarado M, Unwin N, Sharp SJ, *et al.* (2019) Assessing the impact of the Barbados sugar-sweetened beverage tax on beverage sales: an observational study. *Int J Behav Nutr Phys Act* **16**, 13.
120. Backholer K, Sarink D, Beauchamp A, *et al.* (2016) The impact of a tax on sugar-sweetened beverages according to socioeconomic position: a systematic review of the evidence. *Public Health Nutr* **19**, 3070–3084.
121. Bandy LK, Scarborough P, Harrington RA, *et al.* (2020) Reductions in sugar sales from soft drinks in the UK from 2015 to 2018. *BMC Med* **18**, 20.
122. Batis C, Rivera JA, Popkin BM, *et al.* (2016) First-year evaluation of Mexico’s tax on nonessential energy-dense foods: an observational study. *PLoS Med* **13**, e1002057.
123. Bergallo P, Castagnari V, Fernández A, *et al.* (2018) Regulatory initiatives to reduce sugar-sweetened beverages (SSBs) in Latin America. *PLOS ONE* **13**, e0205694.
124. Bollard T, Maubach N, Walker N, *et al.* (2016) Effects of plain packaging, warning labels, and taxes on young people’s predicted sugar-sweetened beverage preferences: an experimental study. *Int J Behav Nutr Phys Act* **13**, 95.
125. Cabrera Escobar MA, Veerman JL, Tollman SM, *et al.* (2013) Evidence that a tax on sugar sweetened beverages reduces the obesity rate: a meta-analysis. *BMC Public Health* **13**, 1072.
126. Caro JC, Corvalán C, Reyes M, *et al.* (2018) Chile’s 2014 sugar-sweetened beverage tax and changes in prices and purchases of sugar-sweetened beverages: an observational study in an urban environment. *PLoS Med* **15**, e1002597.
127. Cawley J, Frisvold D, Hill A, *et al.* (2019) The impact of the Philadelphia beverage tax on purchases and consumption by adults and children. *J Health Econ* **67**, 102225.
128. Claro RM, Levy RB, Popkin BM, *et al.* (2012) Sugar-sweetened beverage taxes in Brazil. *Am J Public Health* **102**, 178–183.
129. Colchero MA, Guerrero-López CM, Molina M, *et al.* (2016) Beverages sales in Mexico before and after implementation of a sugar sweetened beverage tax. *PLOS ONE* **11**, e0163463.



130. Colchero MA, Popkin BM, Rivera JA, *et al.* (2016) Beverage purchases from stores in Mexico under the excise tax on sugar sweetened beverages: observational study. *BMJ* **352**, h6704.
131. Cornelsen L, Mytton OT, Adams J, *et al.* (2017) Change in non-alcoholic beverage sales following a 10-pence levy on sugar-sweetened beverages within a national chain of restaurants in the UK: interrupted time series analysis of a natural experiment. *J Epidemiol Community Health* **71**, 1107–1112.
132. Falbe J, Thompson HR, Becker CM, *et al.* (2016) Impact of the Berkeley excise tax on sugar-sweetened beverage consumption. *Am J Public Health* **106**, 1865–1871.
133. Gillison F, Grey E & Griffin T (2020) Parents' perceptions and responses to the UK soft drinks industry levy. *J Nutr Educ Behav* **52**, 626–631.
134. Gustavsen GW & Rickertsen K (2011) The effects of taxes on purchases of sugar-sweetened carbonated soft drinks: a quantile regression approach. *Appl Econ* **43**, 707–716.
135. Hsiao A & Wang YC (2013) Reducing sugar-sweetened beverage consumption: evidence, policies, and economics. *Curr Obes Rep* **2**, 191–199.
136. Jou J & Techakehakij W (2012) International application of sugar-sweetened beverage (SSB) taxation in obesity reduction: factors that may influence policy effectiveness in country-specific contexts. *Health Policy* **107**, 83–90.
137. Kirkpatrick SI, Raffoul A, Maynard M, *et al.* (2018) Gaps in the evidence on population interventions to reduce consumption of sugars: a review of reviews. *Nutrients* **10**, 1036.
138. Lee MM, Falbe J, Schillinger D, *et al.* (2019) Sugar-sweetened beverage consumption 3 years after the Berkeley, California, sugar-sweetened beverage tax. *Am J Public Health* **109**, 637–639.
139. Muhammad A, Meade B, Marquardt DR, *et al.* (2019) Global patterns in price elasticities of sugar-sweetened beverage intake and potential effectiveness of tax policy: a cross-sectional study of 164 countries by sex, age and global-income decile. *BMJ Open* **9**, e026390.
140. Nakamura R, Mirelman AJ, Cuadrado C, *et al.* (2018) Evaluating the 2014 sugar-sweetened beverage tax in Chile: an observational study in urban areas. *PLoS Med* **15**, e1002596.
141. Ortún V, G López-Valcárcel B & Pinilla J (2016) Tax on sugar sweetened beverages in Spain. *Rev Esp Salud Publica* **90**, e1–e13.
142. Roberto CA, Lawman HG, Levasseur MT, *et al.* (2019) Association of a beverage tax on sugar-sweetened and artificially sweetened beverages with changes in beverage prices and sales at chain retailers in a large urban setting. *JAMA* **321**, 1799–1810.
143. Roberts KE, Ells LJ, McGowan VJ, *et al.* (2017) A rapid review examining purchasing changes resulting from fiscal measures targeted at high sugar foods and sugar-sweetened drinks. *Nutr Diabetes* **7**, 10.
144. Royo-Bordonada MA, Fernandez-Escobar C, Simon L, *et al.* (2019) Impact of an excise tax on the consumption of sugar-sweetened beverages in young people living in poorer neighbourhoods of Catalonia, Spain: a difference in differences study. *BMC Public Health* **19**, 1553.
145. Silver LD, Ng SW, Ryan-Ibarra S, *et al.* (2017) Changes in prices, sales, consumer spending, and beverage consumption one year after a tax on sugar-sweetened beverages in Berkeley, California, US: a before-and-after study. *PLoS Med* **14**, e1002283.
146. Smith RD, Cornelsen L, Quirnbach D, *et al.* (2018) Are sweet snacks more sensitive to price increases than sugar-sweetened beverages: analysis of British food purchase data. *BMJ Open* **8**, e019788.
147. Sobhani S & Babashahi M (2019) Taxation for reducing purchase and consumption of sugar-sweetened beverages: a systematic review. *Int Arch Health Sci* **6**, 65–72.
148. Stacey N, Mudara C, Ng SW, *et al.* (2019) Sugar-based beverage taxes and beverage prices: evidence from South Africa's Health Promotion Levy. *Soc Sci Med* **238**, 112465.
149. Studdert DM, Flanders J & Mello MM (2015) Searching for public health law's sweet spot: the regulation of sugar-sweetened beverages. *PLoS Med* **12**, e1001848.
150. Vandevijvere S & Vanderlee L (2019) Effect of formulation, labelling, and taxation policies on the nutritional quality of the food supply. *Curr Nutr Rep* **8**, 240–249.
151. Waterlander WE, Ni Mhurchu C & Steenhuis IHM (2014) Effects of a price increase on purchases of sugar sweetened beverages. Results from a randomized controlled trial. *Appetite* **78**, 32–39.
152. Zhong Y, Auchincloss AH, Lee BK, *et al.* (2018) The short-term impacts of the Philadelphia beverage tax on beverage consumption. *Am J Prev Med* **55**, 26–34.
153. Brownell KD, Farley T, Willett WC, *et al.* (2009) The public health and economic benefits of taxing sugar-sweetened beverages. *N Engl J Med* **361**, 1599–1605.
154. Chaloupka FJ, Powell LM & Warner KE (2019) The use of excise taxes to reduce tobacco, alcohol, and sugary beverage consumption. *Annu Rev Public Health* **40**, 187–201.
155. Colchero MA, Salgado J, Unar-Munguía M, *et al.* (2015) Price elasticity of the demand for sugar sweetened beverages and soft drinks in Mexico. *Econ Hum Biol* **19**, 129–137.
156. World Cancer Research Fund International (2018) *Lessons on Implementing a Robust Sugar Sweetened Beverage Tax*. London: World Cancer Research Fund International.
157. Guerrero-López CM, Unar-Munguía M & Colchero MA (2017) Price elasticity of the demand for soft drinks, other sugar-sweetened beverages and energy dense food in Chile. *BMC Public Health* **17**, 180.
158. Baker P, Jones A & Thow AM (2018) Accelerating the worldwide adoption of sugar-sweetened beverage taxes: strengthening commitment and capacity; comment on "The untapped power of soda taxes: incentivizing consumers, generating revenue, and altering corporate behavior". *Int J Health Policy Manag* **7**, 474–478.
159. Ogden CL, Kit BK, Carroll MD, *et al.* (2011) *Consumption of Sugar Drinks in the United States, 2005–2008*, NCHS Data Brief no. 71. Hyattsville, MD: National Center for Health Statistics.
160. Bezerra IN, de Moura Souza A, Pereira RA, *et al.* (2013) Contribution of foods consumed away from home to energy intake in Brazilian urban areas: the 2008–9 Nationwide Dietary Survey. *Br J Nutr* **109**, 1276–1283.
161. Einav L, Leibtag ES & Nevo A (2008) *On the Accuracy of Nielsen Homescan Data*. Economic Research Report no. 69. Washington, DC: United States Department of Agriculture.
162. Bleakley A, Jordan A, Mallya G, *et al.* (2018) Do you know what your kids are drinking? Evaluation of a media campaign to reduce consumption of sugar-sweetened beverages. *Am J Health Promot* **32**, 1409–1416.
163. Bleakley A, Jordan AB, Hennessy M, *et al.* (2015) Do emotional appeals in public service advertisements influence adolescents' intention to reduce consumption of sugar-sweetened beverages? *J Health Commun* **20**, 938–948.
164. Farley TA, Halper HS, Carlin AM, *et al.* (2017) Mass media campaign to reduce consumption of sugar-sweetened beverages in a rural area of the United States. *Am J Public Health* **107**, 989–995.



165. Jordan A, Bleakley A, Hennessy M, *et al.* (2015) Sugar-sweetened beverage-related public service advertisements and their influence on parents. *Am Behav Sci* **59**, 1847–1865.
166. Morley BC, Niven PH, Dixon HG, *et al.* (2018) Controlled cohort evaluation of the *LiveLighter* mass media campaign's impact on adults' reported consumption of sugar-sweetened beverages. *BMJ Open* **8**, e019574.
167. Taber DR, Chriqui JF, Powell LM, *et al.* (2012) Banning all sugar-sweetened beverages in middle schools: reduction of in-school access and purchasing but not overall consumption. *Arch Pediatr Adolesc Med* **166**, 256–262.
168. Fehring E, Ferguson M, Brown C, *et al.* (2019) Supporting healthy drink choices in remote Aboriginal and Torres Strait Islander communities: a community-led supportive environment approach. *Aust N Z J Public Health* **43**, 551–557.
169. Browne J, Macdonald C, Egan M, *et al.* (2019) You wouldn't eat 16 teaspoons of sugar – so why drink it? Aboriginal and Torres Strait Islander responses to the *LiveLighter* sugary drink campaign. *Health Promot J Aust* **30**, 212–218.
170. Morley B, Niven P, Dixon H, *et al.* (2019) Association of the *LiveLighter* mass media campaign with consumption of sugar-sweetened beverages: cohort study. *Health Prom J Austr* **30**, Suppl. 1, 34–42.
171. Doymaz S & Neuspiel DR (2009) The influence of pediatric resident counseling on limiting sugar-sweetened drinks in children. *Clin Pediatr* **48**, 777–779.
172. Luger M, Winzer E, Schätzer M, *et al.* (2018) Gradual reduction of free sugars in beverages on sale by implementing the beverage checklist as a public health strategy. *Eur J Public Health* **28**, 961–967.
173. Nezami BT, Ward DS, Tate DF, *et al.* (2018) A mHealth randomized controlled trial to reduce sugar-sweetened beverage intake in preschool-aged children. *Pediatr Obes* **13**, 668–676.
174. Zoellner JM, Hedrick VE, You W, *et al.* (2016) Effects of a behavioral and health literacy intervention to reduce sugar-sweetened beverages: a randomized-controlled trial. *Int J Behav Nutr Phys Act* **13**, 38.
175. Vercammen KA, Frelier JM, Lowery CM, *et al.* (2018) A systematic review of strategies to reduce sugar-sweetened beverage consumption among 0-year to 5-year olds. *Obes Rev* **19**, 1504–1524.
176. Garcia AL, Athifa N, Hammond E, *et al.* (2019) Community-based cooking programme 'Eat Better Feel Better' can improve child and family eating behaviours in low socio-economic groups. *J Epidemiol Community Health* **74**, 190–196.
177. Chen J-L, Guedes CM & Lung AE (2019) Smartphone-based healthy weight management intervention for Chinese American adolescents: short-term efficacy and factors associated with decreased weight. *J Adolesc Health* **64**, 443–449.
178. Yuhas M, Porter KJ, Brock D-JP, *et al.* (2019) Development and pilot testing of text messages to help reduce sugar-sweetened beverage intake among rural caregivers and adolescents: mixed methods study. *JMIR Mhealth And Uhealth* **7**, e14785.
179. Avery A, Bostock L & McCullough F (2015) A systematic review investigating interventions that can help reduce consumption of sugar-sweetened beverages in children leading to changes in body fatness. *J Hum Nutr Diet* **28**, Suppl. 1, 52–64.
180. Bea JW, Jacobs L, Waits J, *et al.* (2015) Need for specific sugar-sweetened beverage lessons for fourth- and fifth-graders. *J Nutr Educ Behav* **47**, 36–43.
181. Feng D, Song H, Esperat MC, *et al.* (2016) A multicomponent intervention helped reduce sugar-sweetened beverage intake in economically disadvantaged Hispanic children. *Am J Health Promot* **30**, 594–603.
182. Griffin TL, Jackson DM, McNeill G, *et al.* (2015) A brief educational intervention increases knowledge of the sugar content of foods and drinks but does not decrease intakes in Scottish children aged 10–12 years. *J Nutr Educ Behav* **47**, 367–373.e1.
183. Kim MH & Yeon JY (2018) Status and needs of nutrition education for children's sugars intake reduction in elementary school. *J Nutr Health* **51**, 433–444.
184. Rahman AA, Jomaa L, Kahale LA, *et al.* (2018) Effectiveness of behavioral interventions to reduce the intake of sugar-sweetened beverages in children and adolescents: a systematic review and meta-analysis. *Nutr Rev* **76**, 88–107.
185. Rauba J, Tahir A, Milford B, *et al.* (2017) Reduction of sugar-sweetened beverage consumption in elementary school students using an educational curriculum of beverage sugar content. *Glob Pediatr Health* **4**, 2333794X17711778.
186. Smith LH & Holloman C (2014) Piloting "sodabriety": a school-based intervention to impact sugar-sweetened beverage consumption in rural Appalachian high schools. *J Sch Health* **84**, 177–184.
187. Tipton JA (2016) Reducing sugar-sweetened beverage intake among students: school-based programs and policies that work. *NASN Sch Nurse* **31**, 102–110.
188. Van de Gaar V, Jansen W, van Grieken A, *et al.* (2014) Effects of an intervention aimed at reducing the intake of sugar-sweetened beverages in primary school children: a controlled trial. *Int J Behav Nutr Phys Act* **11**, 98.
189. Vézina-Im L-A, Beaulieu D, Bélanger-Gravel A, *et al.* (2017) Efficacy of school-based interventions aimed at decreasing sugar-sweetened beverage consumption among adolescents: a systematic review. *Public Health Nutr* **20**, 2416–2431.
190. Levy DT, Friend KB & Wang YC (2011) A review of the literature on policies directed at the youth consumption of sugar sweetened beverages. *Adv Nutr* **2**, 182S–200S.
191. Veitch J, Singh A, van Stralen MM, *et al.* (2011) Reduction in sugar-sweetened beverages is not associated with more water or diet drinks. *Public Health Nutr* **14**, 1388–1393.
192. Grummon AH, Cabana MD, Hecht AA, *et al.* (2019) Effects of a multipronged beverage intervention on young children's beverage intake and weight: a cluster-randomized pilot study. *Public Health Nutr* **22**, 2856–2867.
193. Smith LH, Sexton C, Pettigrew K, *et al.* (2019) "Bringing Tap Back": expanding the "sodabriety" teen advisory council approach in Tennessee high schools. *J Sch Nurs* **2019**, 1059840519850881.
194. Wang ML, Otis M, Rosal MC, *et al.* (2019) Reducing sugary drink intake through youth empowerment: results from a pilot-site randomized study. *Int J Behav Nutr Phys Act* **16**, 58.
195. Irwin BR, Speechley M, Wilk P, *et al.* (2019) Promoting healthy beverage consumption habits among elementary school children: results of the Healthy Kids Community Challenge 'Water Does Wonders' interventions in London, Ontario. *Can J Public Health* **111**, 257–268.
196. Santaló MI, Gibbons S & Naylor P-J (2019) Using food models to enhance sugar literacy among older adolescents: evaluation of a brief experiential nutrition education intervention. *Nutrients* **11**, 1763.
197. Schwartz MB, Schneider GE, Choi Y-Y, *et al.* (2017) Association of a community campaign for better beverage choices with beverage purchases from supermarkets. *JAMA Intern Med* **177**, 666–674.
198. Zahid A & Reicks M (2019) A newsletter/text message intervention promoting beverage-related parenting practices: pilot test results. *Health Promot Pract* **20**, 897–904.
199. Billich N, Blake MR, Backholer K, *et al.* (2018) The effect of sugar-sweetened beverage front-of-pack labels on drink



- selection, health knowledge and awareness: an online randomised controlled trial. *Appetite* **128**, 233–241.
200. Bleich SN, Herring BJ, Flagg DD, *et al.* (2012) Reduction in purchases of sugar-sweetened beverages among low-income black adolescents after exposure to caloric information. *Am J Public Health* **102**, 329–335.
201. Finkelstein EA, Strombotne KL, Chan NL, *et al.* (2011) Mandatory menu labeling in one fast-food chain in King County, Washington. *Am J Prev Med* **40**, 122–127.
202. Weaver D & Finke M (2003) The relationship between the use of sugar content information on nutrition labels and the consumption of added sugars. *Food Policy* **28**, 213–219.
203. Bleich SN, Barry CL, Gary-Webb TL, *et al.* (2014) Reducing sugar-sweetened beverage consumption by providing caloric information: how black adolescents alter their purchases and whether the effects persist. *Am J Public Health* **104**, 2417–2424.
204. Hartigan P, Patton-Ku D, Fidler C, *et al.* (2017) Rethink your drink: reducing sugar-sweetened beverage sales in a children's hospital. *Health Prom Pract* **18**, 238–244.
205. Boelsen-Robinson T, Backholer K, Corben K, *et al.* (2017) The effect of a change to healthy vending in a major Australian health service on sales of healthy and unhealthy food and beverages. *Appetite* **114**, 73–81.
206. Franckle RL, Levy DE, Macias-Navarro L, *et al.* (2018) Traffic-light labels and financial incentives to reduce sugar-sweetened beverage purchases by low-income Latino families: a randomized controlled trial. *Public Health Nutr* **21**, 1426–1434.
207. Stamos A, Lange F & Dewitte S (2019) Promoting healthy drink choices at school by means of assortment changes and traffic light coding: a field study. *Food Qual Pref* **71**, 415–421.
208. Cawley J, Sweeney MJ, Sobal J, *et al.* (2015) The impact of a supermarket nutrition rating system on purchases of nutritious and less nutritious foods. *Public Health Nutr* **18**, 8–14.
209. Hobin E, Bollinger B, Sacco J, *et al.* (2017) Consumers' response to an on-shelf nutrition labelling system in supermarkets: evidence to inform policy and practice. *Milbank Q* **95**, 494–534.
210. Siegel RM, Anneken A, Duffy C, *et al.* (2015) Emoticon use increases plain milk and vegetable purchase in a school cafeteria without adversely affecting total milk purchase. *Clin Ther* **37**, 1938–1943.
211. Ares G, Machin L, Vidal L, *et al.* (2020) How can we motivate people to use nutritional warnings in decision making? Citizen co-created insights for the development of communication campaigns. *Health Educ Behav* **47**, 321–331.
212. Durán Agüero S, Silva Ocampo P, Giménez Sánchez J, *et al.* (2020) Stages of change in the purchase of packaged foods after phase 1 of the implementation of the new food policy in Chile 2017. *Nutrition* **71**, 110593.
213. Grummon AH, Taillie LS, Golden SD, *et al.* (2019) Sugar-sweetened beverage health warnings and purchases: a randomized controlled trial. *Am J Prev Med* **57**, 601–610.
214. Mantzari E, Vasiljevic M, Turney I, *et al.* (2018) Impact of warning labels on sugar-sweetened beverages on parental selection: an online experimental study. *Prev Med Rep* **12**, 259–267.
215. Roberto CA, Wong D, Musicus A, *et al.* (2016) The influence of sugar-sweetened beverage health warning labels on parents' choices. *Pediatrics* **137**, e20153185.
216. VanEpps EM & Roberto CA (2016) The influence of sugar-sweetened beverage warnings a randomized trial of adolescents' choices and beliefs. *Am J Prev Med* **51**, 664–672.
217. Kanter R, Vanderlee L & Vandevijvere S (2018) Front-of-package nutrition labelling policy: global progress and future directions. *Public Health Nutr* **21**, 1399–1408.
218. Bauhoff S (2014) The effect of school district nutrition policies on dietary intake and overweight: a synthetic control approach. *Econ Hum Biol* **12**, 45–55.
219. Cohen JFW, Richardson SA, Cluggish SA, *et al.* (2015) Effects of choice architecture and chef-enhanced meals on the selection and consumption of healthier school foods. *JAMA Pediatr* **169**, 431–437.
220. Ermetici F, Zelaschi RF, Briganti S, *et al.* (2016) Association between a school-based intervention and adiposity outcomes in adolescents: The Italian "EAT" project. *Obesity (Silver Spring)* **24**, 687–689.
221. Emerson M, Hudgens M, Barnes A, *et al.* (2017) Small prizes increased plain milk and vegetable selection by elementary school children without adversely affecting total milk purchase. *Beverages* **3**, 14.
222. Elbel B, Mijanovich T, Abrams C, *et al.* (2015) A water availability intervention in New York City public schools: influence on youths' water and milk behaviors. *Am J Public Health* **105**, 365–372.
223. Craddock AL, McHugh A, Mont-Ferguson H, *et al.* (2011) Effect of school district policy change on consumption of sugar-sweetened beverages among high school students, Boston, Massachusetts, 2004–2006. *Prev Chronic Dis* **8**, A74.
224. Aldwell K, Caillaud C, Galy O, *et al.* (2018) Tackling the consumption of high sugar products among children and adolescents in the Pacific islands: implications for future research. *Healthcare (Basel)* **6**, 31.
225. Capacci S, Mazzocchi M & Shankar B (2018) Breaking habits: the effect of the French vending machine ban on school snacking and sugar intakes. *J Policy Anal Manage* **37**, 88–111.
226. Whatley Blum JE, Davey AM, Beaudoin CM, *et al.* (2008) Reduced availability of sugar-sweetened beverages and diet soda has a limited impact on beverage consumption patterns in Maine high school youth. *J Nutr Educ Behav* **40**, 341–347.
227. Johnson DB, Bruemmer B, Lund AE, *et al.* (2009) Impact of school district sugar-sweetened beverage policies on student beverage exposure and consumption in middle schools. *J Adolesc Health* **45**, Suppl. 3, S30–S37.
228. Moise N, Cifuentes E, Orozco E, *et al.* (2011) Limiting the consumption of sugar sweetened beverages in Mexico's obesogenic environment: a qualitative policy review and stakeholder analysis. *J Public Health Policy* **32**, 458–475.
229. Fletcher JM, Frisvold D & Tefft N (2010) Taxing soft drinks and restricting access to vending machines to curb child obesity. *Health Aff (Millwood)* **29**, 1059–1066.
230. Cotwright CJ, Bradley H, Celestin N, *et al.* (2019) Beverage policy implementation by child and adult care food program participation and program type: a statewide examination in Georgia. *Child Obes* **15**, 185–193.
231. Muckelbauer R, Libuda L, Clausen K, *et al.* (2009) Promotion and provision of drinking water in schools for overweight prevention: randomized, controlled cluster trial. *Pediatrics* **123**, e661–e667.
232. Huang R & Kiesel K (2012) Does limited access at school result in compensation at home? The effect of soft drink bans in schools on purchase patterns outside of schools. *Eur Rev Agric Econ* **39**, 797–820.
233. Hua SV, Kimmel L, Van Emmenes M, *et al.* (2017) Health promotion and healthier products increase vending purchases: a randomized factorial trial. *J Acad Nutr Diet* **117**, 1057–1065.
234. Hendy HM, Williams KE & Camise TS (2011) Kid's Choice Program improves weight management behaviors and weight status in school children. *Appetite* **56**, 484–494.
235. Visscher TLS, Van Hal WC, Blokdijk L, *et al.* (2010) Feasibility and impact of placing water coolers on sales of

- sugar-sweetened beverages in Dutch secondary school canteens. *Obes Facts* **3**, 109–115.
236. Siegel RM, Geoplinger R, Emerson MM, *et al.* (2016) Small prizes to improve food selection in inner city elementary schools. *J Pediatr Child Nutr* **2**, 100117.
  237. Schwartz MB, Novak SA & Fiore SS (2009) The impact of removing snacks of low nutritional value from middle schools. *Health Educ Behav* **36**, 999–1011.
  238. Schwartz AE, Leardo M, Aneja S, *et al.* (2016) Effect of a school-based water intervention on child body mass index and obesity. *JAMA Pediatr* **170**, 220–226.
  239. Øverby NC, Klepp KI & Bere E (2012) Introduction of a school fruit program is associated with reduced frequency of consumption of unhealthy snacks. *Am J Clin Nutr* **96**, 1100–1103.
  240. Lichtman-Sadot S (2016) Does banning carbonated beverages in schools decrease student consumption? *J Public Econ* **140**, 30–50.
  241. Hovdenak IM, Bere E & Stea TH (2019) Time trends (1995–2008) in dietary habits among adolescents in relation to the Norwegian School Fruit Scheme: the HUNT study. *Nutr J* **18**, 77.
  242. Blake MR, Peeters A, Lancsar E, *et al.* (2018) Retailer-led sugar-sweetened beverage price increase reduces purchases in a hospital convenience store in Melbourne, Australia: a mixed methods evaluation. *J Acad Nutr Diet* **118**, 1027–1036.e8.
  243. Eneli IU, Oza-Frank R, Grover K, *et al.* (2014) Instituting a sugar-sweetened beverage ban: experience from a children's hospital. *Am J Public Health* **104**, 1822–1825.
  244. Albala C, Ebbeling CB, Cifuentes M, *et al.* (2008) Effects of replacing the habitual consumption of sugar-sweetened beverages with milk in Chilean children. *Am J Clin Nutr* **88**, 605–611.
  245. Ebbeling CB, Feldman HA, Chomitz VR, *et al.* (2012) A randomized trial of sugar-sweetened beverages and adolescent body weight. *New Engl J Med* **367**, 1407–1416.
  246. Breeze P, Womack R, Pryce R, *et al.* (2018) The impact of a local sugar sweetened beverage health promotion and price increase on sales in public leisure centre facilities. *PLOS ONE* **13**, e0194637.
  247. French SA, Harnack LJ, Hannan PJ, *et al.* (2010) Worksite environment intervention to prevent obesity among metropolitan transit workers. *Prev Med* **50**, 180–185.
  248. Yan S, Pappas A, Yuan MD, *et al.* (2019) Evaluating healthy vending at the American Heart Association National Center: a pilot study. *Am J Health Promot* **33**, 928–932.
  249. Gustafson A, Ng SW & Jilcott Pitts S (2019) The association between the “Plate it Up Kentucky” supermarket intervention and changes in grocery shopping practices among rural residents. *Transl Behav Med* **9**, 865–874.
  250. Brimblecombe J, Ferguson M, Chatfield MD, *et al.* (2017) Effect of a price discount and consumer education strategy on food and beverage purchases in remote Indigenous Australia: a stepped-wedge randomised controlled trial. *Lancet Public Health* **2**, e82–e95.
  251. Foster GD, Karpyn A, Wojtanowski AC, *et al.* (2014) Placement and promotion strategies to increase sales of healthier products in supermarkets in low-income, ethnically diverse neighborhoods: a randomized controlled trial. *Am J Clin Nutr* **99**, 1359–1368.
  252. Peters J, Beck J, Lande J, *et al.* (2016) Using healthy defaults in Walt Disney World restaurants to improve nutritional choices. *J Assoc Consum Res* **1**, 92–103.
  253. Ni Mhurchu C, Blakely T, Jiang Y, *et al.* (2010) Effects of price discounts and tailored nutrition education on supermarket purchases: a randomized controlled trial. *Am J Clin Nutr* **91**, 736–747.
  254. Ball K, McNaughton SA, Le HN, *et al.* (2015) Influence of price discounts and skill-building strategies on purchase and consumption of healthy food and beverages: outcomes of the Supermarket Healthy Eating for Life randomized controlled trial. *Am J Clin Nutr* **101**, 1055–1064.
  255. Van Raaij J, Hendriksen M & Verhagen H (2009) Potential for improvement of population diet through reformulation of commonly eaten foods. *Public Health Nutr* **12**, 325–330.
  256. World Cancer Research Fund International (2019) NOURISHING and MOVING policy databases. <https://www.wcrf.org/int/policy/nourishing-database> (accessed November 2020).
  257. Public Health England (2018) *Sugar Reduction Programme: Progress Made by Industry in the First Year*. London: Public Health England. <https://www.gov.uk/government/publications/sugar-reduction-report-on-first-year-progress> (accessed November 2020).
  258. Hashem KM, He FJ & MacGregor GA (2019) Effects of product reformulation on sugar intake and health – a systematic review and meta-analysis. *Nutr Rev* **77**, 181–196.
  259. Welsh JA, Lundeen EA & Stein AD (2013) The sugar-sweetened beverage wars: public health and the role of the beverage industry. *Curr Opin Endocrinol Diabetes Obes* **20**, 401–406.
  260. Borges MC, Louzada ML, de Sá TH, *et al.* (2017) Artificially sweetened beverages and the response to the global obesity crisis. *PLoS Med* **14**, e1002195.
  261. Elfhag K, Tynelius P, Rasmussen F (2007) Sugar-sweetened and artificially sweetened soft drinks in association to restrained, external and emotional eating. *Physiol Behav* **91**, 191–195.
  262. Piernas C, Mendez MA, Ng SW, *et al.* (2013) Low-calorie- and calorie-sweetened beverages: diet quality, food intake, and purchase patterns of US household consumers. *Am J Clin Nutr* **99**, 567–577.
  263. Duffey KJ, Steffen LM, Van Horn L, *et al.* (2012) Dietary patterns matter: diet beverages and cardiometabolic risks in the longitudinal Coronary Artery Risk Development in Young Adults (CARDIA) Study. *Am J Clin Nutr* **95**, 909–915.
  264. Rusmevichientong P, Mitra S, McEligot AJ, *et al.* (2018) The association between types of soda consumption and overall diet quality: evidence from National Health and Nutrition Examination Survey (NHANES). *Calif J Health Promot* **16**, 24–35.
  265. Binkley J & Golub A (2007) Comparison of grocery purchase patterns of diet soda buyers to those of regular soda buyers. *Appetite* **49**, 561–571.
  266. Gibson S, Horgan G, Francis L, *et al.* (2016) Low calorie beverage consumption is associated with energy and nutrient intakes and diet quality in British adults. *Nutrients* **8**, 9.
  267. Sigman-Grant MJ & Hsieh G (2005) Reported use of reduced-sugar foods and beverages reflect high-quality diets. *J Food Sci* **70**, S42–S46.
  268. Piernas C, Tate DF, Wang XS, *et al.* (2013) Does diet-beverage intake affect dietary consumption patterns? Results from the Choose Healthy Options Consciously Everyday (CHOICE) randomized clinical trial. *Am J Clin Nutr* **97**, 604–611.
  269. Duffey KJ & Popkin BM (2006) Adults with healthier dietary patterns have healthier beverage patterns. *J Nutr* **136**, 2901–2907.
  270. Brunkwall L, Almgren P, Hellstrand S, *et al.* (2019) Commonly consumed beverages associate with different lifestyle and dietary intakes. *Int J Food Sci Nutr* **70**, 88–97.
  271. Fantino M, Fantino A, Matray M, *et al.* (2018) Beverages containing low energy sweeteners do not differ from water in their

- effects on appetite, energy intake and food choices in healthy, non-obese French adults. *Appetite* **2018**, 557–565.
272. Leahy M, Ratliff J, Riedt C, *et al.* (2017) Consumption of low-calorie sweetened beverages compared to water is associated with reduced intake of carbohydrates and sugar, with no adverse relationships to glycemic responses: results from the 2001–2012 National Health and Nutrition Examination Surveys. *Nutrients* **9**, 928.
  273. Markey O, Le Jeune J & Lovegrove JA (2016) Energy compensation following consumption of sugar-reduced products: a randomized controlled trial. *Eur J Nutr* **55**, 2137–2149.
  274. Sørensen LB, Vasilaras TH, Astrup A, *et al.* (2014) Sucrose compared with artificial sweeteners: a clinical intervention study of effects on energy intake, appetite, and energy expenditure after 10 wk of supplementation in overweight subjects. *Am J Clin Nutr* **100**, 36–45.
  275. Ratliff JC, Riedt CS & Fulgoni VL III (2019) Consumption of low-calorie sweetened beverages and water is associated with lower intake of carbohydrates and sugars and not associated with glycemic response in U.S. non-diabetic adolescents: results from the 2001–2014 National Health and Nutrition Examination Surveys. *Nutrition: X* **1**, 100003.
  276. Sylvetsky AC, Figueroa J, Zimmerman T, *et al.* (2019) Consumption of low-calorie sweetened beverages is associated with higher total energy and sugar intake among children, NHANES 2011–2016. *Pediatr Obes* **14**, e12535.
  277. Piernas C, Ng SW, Mendez MA, *et al.* (2015) A dynamic panel model of the associations of sweetened beverage purchases with dietary quality and food-purchasing patterns. *Am J Epidemiol* **181**, 661–671.
  278. Winther R, Aasbrenn M & Farup PG (2017) Intake of non-nutritive sweeteners is associated with an unhealthy lifestyle: a cross-sectional study in subjects with morbid obesity. *BMC Obes* **4**, 41.
  279. Higgins KA & Mattes RD (2019) A randomized controlled trial contrasting the effects of 4 low-calorie sweeteners and sucrose on body weight in adults with overweight or obesity. *Am J Clin Nutr* **109**, 1288–1301.
  280. Tordoff MG & Alleva AM (1990) Effect of drinking soda sweetened with aspartame or high-fructose corn syrup on food intake and body weight. *Am J Clin Nutr* **51**, 963–969.
  281. Reid M, Hammersley R, Hill AJ, *et al.* (2007) Long-term dietary compensation for added sugar: effects of supplementary sucrose drinks over a 4-week period. *Br J Nutr* **97**, 193–203.
  282. Sylvetsky AC, Jin Y, Mathieu K, *et al.* (2017) Low-calorie sweeteners: disturbing the energy balance equation in adolescents? *Obesity* **25**, 2049–2054.
  283. Tate DF, Turner-McGrievy G, Lyons E, *et al.* (2012) Replacing caloric beverages with water or diet beverages for weight loss in adults: main results of the Choose Healthy Options Consciously Everyday (CHOICE) randomized clinical trial. *Am J Clin Nutr* **95**, 555–563.
  284. Stookey JD, Constant F, Gardner CD, *et al.* (2007) Replacing sweetened caloric beverages with drinking water is associated with lower energy intake. *Obesity* **15**, 3013–3022.
  285. Gibson RS, Charrondiere UR & Bell W (2017) Measurement errors in dietary assessment using self-reported 24-hour recalls in low-income countries and strategies for their prevention. *Adv Nutr* **8**, 980–991.
  286. Gibson RS (2005) *Principles of Nutritional Assessment*. New York: Oxford University Press.
  287. Birch LL, McPhee L & Sullivan S (1989) Children's food intake following drinks sweetened with sucrose or aspartame: time course effects. *Physiol Behav* **45**, 387–395.
  288. Gadah NS, Brunstrom JM & Rogers PJ (2016) Cross-over studies underestimate energy compensation: the example of sucrose-versus sucralose-containing drinks. *Appetite* **107**, 398–405.
  289. King NA, Appleton K, Rogers PJ, *et al.* (1999) Effects of sweetness and energy in drinks on food intake following exercise. *Physiol Behav* **66**, 375–379.
  290. Lavin J, French S & Read N (1997) The effect of sucrose- and aspartame-sweetened drinks on energy intake, hunger and food choice of female, moderately restrained eaters. *Int J Obes* **21**, 37–42.
  291. Rogers PJ & Blundell JE (1989) Separating the actions of sweetness and calories: effects of saccharin and carbohydrates on hunger and food intake in human subjects. *Physiol Behav* **45**, 1093–1099.
  292. Tey S, Salleh N, Henry J, *et al.* (2017) Effects of aspartame-, monk fruit-, stevia- and sucrose-sweetened beverages on postprandial glucose, insulin and energy intake. *Int J Obes* **41**, 450–457.
  293. Anderson GH, Saravis S, Schacher R, *et al.* (1989) Aspartame: effect on lunch-time food intake, appetite and hedonic response in children. *Appetite* **13**, 93–103.
  294. Anton SD, Martin CK, Han H, *et al.* (2010) Effects of stevia, aspartame, and sucrose on food intake, satiety, and postprandial glucose and insulin levels. *Appetite* **55**, 37–43.
  295. Beridot-Therond M, Arts I, Fantino MD, *et al.* (1998) Short-term effects of the flavour of drinks on ingestive behaviours in man. *Appetite* **31**, 67–81.
  296. Black RM, Leiter LA & Anderson GH (1993) Consuming aspartame with and without taste: differential effects on appetite and food intake of young adult males. *Physiol Behav* **53**, 459–466.
  297. Black RM, Tanaka P, Leiter LA, *et al.* (1991) Soft drinks with aspartame: effect on subjective hunger, food selection, and food intake of young adult males. *Physiol Behav* **49**, 803–810.
  298. Brala PM & Hagen RL (1983) Effects of sweetness perception and caloric value of a preload on short term intake. *Physiol Behav* **30**, 1–9.
  299. Canty DJ & Chan MM (1991) Effects of consumption of caloric vs noncaloric sweet drinks on indices of hunger and food consumption in normal adults. *Am J Clin Nutr* **53**, 1159–1164.
  300. Dellavalle DM, Roe LS & Rolls BJ (2005) Does the consumption of caloric and non-caloric beverages with a meal affect energy intake? *Appetite* **44**, 187–193.
  301. Drewnowski A, Massien C, Louis-Sylvestre J, *et al.* (1994) Comparing the effects of aspartame and sucrose on motivational ratings, taste preferences, and energy intakes in humans. *Am J Clin Nutr* **59**, 338–345.
  302. Flood JE, Roe LS & Rolls BJ (2006) The effect of increased beverage portion size on energy intake at a meal. *J Am Diet Assoc* **106**, 1984–1990.
  303. Holt SH, Sandona N & Brand-Miller JC (2000) The effects of sugar-free vs sugar-rich beverages on feelings of fullness and subsequent food intake. *Int J Food Sci Nutr* **51**, 59–71.
  304. Mattes R (1990) Effects of aspartame and sucrose on hunger and energy intake in humans. *Physiol Behav* **47**, 1037–1044.
  305. Rodin J (1990) Comparative effects of fructose, aspartame, glucose, and water preloads on caloric and macronutrient intake. *Am J Clin Nutr* **51**, 428–435.
  306. Rogers PJ, Carlyle J-A, Hill AJ, *et al.* (1988) Uncoupling sweet taste and calories: comparison of the effects of glucose and three intense sweeteners on hunger and food intake. *Physiol Behav* **43**, 547–552.
  307. Rolls BJ (1991) Effects of intense sweeteners on hunger, food intake, and body weight: a review. *Am J Clin Nutr* **53**, 872–878.

308. Rolls BJ, Kim S & Fedoroff IC (1990) Effects of drinks sweetened with sucrose or aspartame on hunger, thirst and food intake in men. *Physiol Behav* **48**, 19–26.
309. Rolls BJ, Laster LJ & Summerfelt A (1989) Hunger and food intake following consumption of low-calorie foods. *Appetite* **13**, 115–127.
310. Ryan-Harshman M, Leiter LA & Anderson GH (1987) Phenylalanine and aspartame fail to alter feeding behavior, mood and arousal in men. *Physiol Behav* **39**, 247–253.
311. Van Engelen M, Armstrong T, Rossiter M, *et al.* (2012) The effect of sugars in solution on subjective appetite and short-term food intake in normal weight boys. *FASEB J* **26**, 40.7.
312. Ford H, Peters V, Martin N, *et al.* (2011) Effects of oral ingestion of sucralose on gut hormone response and appetite in healthy normal-weight subjects. *Eur J Clin Nutr* **65**, 508–513.
313. Wilson JF (2000) Lunch eating behavior of preschool children: effects of age, gender, and type of beverage served. *Physiol Behav* **70**, 27–33.
314. Farhat G, Berset V & Moore L (2019) Effects of stevia extract on postprandial glucose response, satiety and energy intake: a three-arm crossover trial. *Nutrients* **11**, 3036.
315. Chern C & Tan S-Y (2019) Energy expenditure, carbohydrate oxidation and appetitive responses to sucrose or sucralose in humans: a pilot study. *Nutrients* **11**, 1782.
316. Rogers PJ, Fleming HC & Blundell JE (1990) Aspartame ingested without tasting inhibits hunger and food intake. *Physiol Behav* **47**, 1239–1243.
317. Rogers PJ, Keedwell P & Blundell JE (1991) Further analysis of the short-term inhibition of food intake in humans by the dipeptide L-aspartyl-L-phenylalanine methyl ester (aspartame). *Physiol Behav* **49**, 739–743.
318. Rogers PJ, Burley VJ, Alikhanizadeh LA, *et al.* (1995) Postingestive inhibition of food intake by aspartame: importance of interval between aspartame administration and subsequent eating. *Physiol Behav* **57**, 489–493.
319. Van Wymelbeke V, Beridot-Therond M, de La Gueronniere V, *et al.* (2004) Influence of repeated consumption of beverages containing sucrose or intense sweeteners on food intake. *Eur J Clin Nutr* **58**, 154–161.
320. Penders B, Wolters A, Feskens EF, *et al.* (2017) Capable and credible? Challenging nutrition science. *Eur J Clin Nutr* **56**, 2009–2012.
321. Baker-Smith CM, de Ferranti SD & Cochran WJ (2019) The use of nonnutritive sweeteners in children. *Pediatrics* **144**, e20192765.
322. Wardle J & Steptoe A (2003) Socioeconomic differences in attitudes and beliefs about healthy lifestyles. *J Epidemiol Community Health* **57**, 440–443.
323. Kiefer I, Rathmanner T, Kunze M (2005) Eating and dieting differences in men and women. *Journal Mens Health Gender* **2**, 194–201.
324. Yang Q (2010) Gain weight by “going diet?” Artificial sweeteners and the neurobiology of sugar cravings: Neuroscience 2010. *Yale J Biol Med* **83**, 101–108.
325. Gardner C (2014) Non-nutritive sweeteners: evidence for benefit vs. risk. *Curr Opin Lipidol* **25**, 80–84.
326. Visek AJ, Blake EF, Otterbein M, *et al.* (2019) SWEET MAPS: a conceptualization of low-calorie sweetener consumption among young adults. *Curr Dev Nutr* **3**, nzy103.
327. Riobó Serván P, Sierra Poyatos R & Soldo Rodríguez J (2014) Low and no calorie sweeteners (LNCS); myths and realities. *Nutr Hosp* **30**, Suppl. 2, e49–e55.
328. Mandrioli D, Kearns CE & Bero LA (2016) Relationship between research outcomes and risk of bias, study sponsorship, and author financial conflicts of interest in reviews of the effects of artificially sweetened beverages on weight outcomes: a systematic review of reviews. *PLOS ONE* **11**, e0162198.
329. Lundh A, Lexchin J, Mintzes B, *et al.* (2017) Industry sponsorship and research outcome. *Cochrane Database Syst Rev*, **issue 2**, MR000033.
330. Bes-Rastrollo M, Schulze MB, Ruiz-Canela M, *et al.* (2013) Financial conflicts of interest and reporting bias regarding the association between sugar-sweetened beverages and weight gain: a systematic review of systematic reviews. *PLoS Med* **10**, e1001578.
331. Hennessy M, Cullerton K, Baker P, *et al.* (2019) Time for complete transparency about conflicts of interest in public health nutrition research. *HRB Open Res* **2**, 12894.
332. Archer E, Hand GA & Blair SN (2013) Validity of US nutritional surveillance: National Health and Nutrition Examination Survey caloric energy intake data, 1971–2010. *PLOS ONE* **8**, e76632.
333. Baker P & Friel S (2014) Processed foods and the nutrition transition: evidence from Asia. *Obes Rev* **15**, 564–577.
334. Baker P & Friel S (2016) Food systems transformations, ultra-processed food markets and the nutrition transition in Asia. *Global Health* **12**, 80.