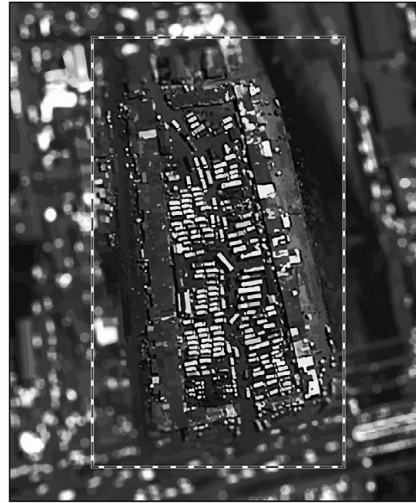
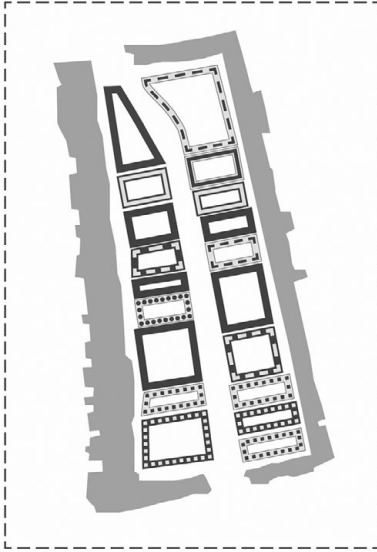


Map 1 Neoplan's roadmap.

Source: Originally published in Stasik (2017). Reproduced with permission from Taylor & Francis Ltd, [www.tandfonline.com](http://www.tandfonline.com).



**Neoplan Station, Accra (Ghana):  
Yardmap according to bus routes.**

Draft: M. Stasik. Graphic: M. Gebauer (2014).  
Source: Own research. Original satellite image: Google Earth.

**Map 2 Neoplan's yardmap.**

*Source:* Originally published in Stasik (2017). Reproduced with permission from Taylor & Francis Ltd, [www.tandfonline.com](http://www.tandfonline.com).

