

JOURNAL OF MENTAL SCIENCE.

Asylum Reports have been received for 1906-7 from those marked with an asterisk:—COUNTRY.—Beds, Berks, Bucks, Cambridge, Carmarthen,* Chester, Chester (Parkside), Cornwall, Cumberland,* Denbigh, Derby (Mickleover), Devon, Dorset, Durham, Essex, Glamorgan,* Gloucester, Hants, Isle of Wight, Hereford,* Hertford, Kent (Barming), (Chartham), Lancashire (Lancaster), (Rainhill), (Prestwich),* (Whittingham), Leicester,* Lincoln (Kesteven),* (Bracebridge), London (Colney Hatch), (Hanwell), (Banstead), (Canehill), (Claybury), (Bexley), Middlesex, Monmouth,* Norfolk, Northampton, Northumberland, Nottingham, Oxford, Salop,* Somerset (Wells),* (Taunton), Stafford (Stafford), (Lichfield), (Leek), Suffolk, Surrey,* Sussex (East), (Chichester), Warwick, Wilts,* Worcester,* Yorkshire (Wakefield),* (Wadsley), (Menston), (Clifton), (Beverley); BOROUGH.—Birmingham (Winson Green), (Rubery Hill), Bristol, Derby,* Exeter, Hull, Hayward's Heath,* Ipswich,* Leicester, London,* Middlebrough, Newcastle, Norwich, Nottingham,* Plymouth, Portsmouth, Sunderland. HOSPITALS.—Manchester, Wonford,* Barnwood,* Albert, Lincoln,* St. Luke's, St. Andrew's, St. Ann's, Coppice, Warneford,* Coton Hill, Bethlem,* Eariswood,* Bootham, Retreat,* Colchester, Broadmoor, Isle of Man; Metropolitan Asylums Board (Belmont),* (Caterham),* (Darent),* (Leavesden),* (Tooting Bec),* (Rochester House),* Aberdeen,* Argyll,* Ayr, Dumfries,* Edinburgh,* Midlothian, Fife, Dundee, Montrose, Inverness,* Lanark,* Barony, Glasgow, Royal,* Lenzie, Govan,* Gartloch,* Kirklands, Perth,* Murthly, Roxburgh,* Stirling,* Baldovan, Armagh,* Ballinasloe, Belfast, Carlow, Castlebar, Clonmel, Cork, Downpatrick,* Ennis,* Enniscorthy, Farnham, Kilkenny, Killarney, Letterkenny, Limerick,* Londonderry, Maryborough, Monaghan, Mullingar, Omagh, Palmerston, Richmond, St. Patrick's, Sligo, Waterford.

The following Asylum Reports have also come to hand:—Egypt, Cape of Good Hope, Nova Scotia, New Brunswick, Victoria, New York, Massachusetts Hospital, Ontario, Verdun, Warren, Pennsylvania,* Philadelphia Friends, Binghampton, Willard, Northampton, Long View, South Australia,* Cleveland, Matteawan,* New South Wales,* Assam,* Madras, Bengal,* Bombay, Central Provinces, Rangoon,* Punjab, North-Western Provinces, Tezpur, Mississippi, Pennsylvania Hospital, Washington, Utica, Long Island, Virginia Central, Illinois West, New Hampshire, Butler,* Maryland, Pennsylvania West, South Mountain, Manhattan, Indiana East, Connecticut, Carolina N., Dakota N., Ohio, Carthage, Buffalo, Michigan East, Missouri, Alt Scherbitz, Massachusetts Board, Virginia West, Pennsylvania, Danville, Sheppard and Pratt Hospital, Baltimore, Pennsylvania, Harrisburgs, Pennsylvania, Norristown, Aarhus, Lebanon,* Hudson River, Rochester, Taunton, Iowa, Jamaica,* Grahamstown, Pretoria, Egypt, Albany, Tarrytown, Straits Settlements, Lower Austria.

Authors of Original Papers receive 25 reprints of their articles free of cost if application be made on the slips when returning proof. If any *extra* reprints are required, notice should be at the same time sent to the Printers, Messrs. ADLARD and SON, Bartholomew Close, London, E.C., who will supply them at a fixed charge. Unless instructions are sent by authors of Papers when the proofs are returned, no copies can be guaranteed.

The copies of the *Journal of Mental Science* are regularly sent by carrier, who in every case obtains a receipt of delivery, to the Ordinary and Honorary Members of the Association. Complaints of non-receipt of the JOURNAL should be sent to Messrs. ADLARD. Any change of address should be intimated to the General Secretary.

D. STEWART & CO.,
GENERAL DRAPERY, CLOTHING, AND
BEDDING CONTRACTORS
WITH COUNTY COUNCILS, BOARDS OF GUARDIANS,
COMMITTEES OF ASYLUMS, HOSPITALS AND SCHOOLS.

Blankets	Flaxens	Hosiery	Table Linens
Bedsteads	Flannels	Linoleum	Towels
Bedding	Furniture	Pillow Linens	Towelling
Calicoes	Flocks	Prints	Waterproof
Carpets	Haberdashery	Shirtings	Sheeting
Clothing	Hessians	Sheetings (Cotton)	Window
Dress Materials	Hollands	Sheetings (Linen)	Holland

D. S. & Co. at present hold Contracts with many of the largest
Institutions in London and the Provinces.

TENDERS INVITED.

16, STAINING LANE, GRESHAM STREET,
LONDON, E.C.

Telegraphic Address—"Centralize, London." Telephone—521 Bank.

Second Edition. Revised and in Part Rewritten. Price 30s.

MENTAL DISEASES,

With Special Reference to the Pathological Aspects of Insanity.

By W. BEVAN LEWIS, L.R.C.P., M.R.C.S.,

Medical Superintendent and Director of the West Riding Asylum, Wakefield.

"Without doubt the BEST WORK in English of its kind."—*Journal of Mental Science.*

LUNATIC ASYLUMS; their Organization and Management. By CHARLES MERCIER, M.B., F.R.C.S. In large 8vo, Cloth. Price 16s.

ANATOMY OF THE CENTRAL NERVOUS ORGANS, in Health and Disease. By Prof. OBERSTEINER. Translated by ALEX. HILL, M.A., M.D. Second English edition. Revised and Enlarged, 30s.

THE BRAIN AND SPINAL CORD (Structure and Functions of). By Sir VICTOR HORSLEY, F.R.S. In Cloth. Price 10s. 6d.

FORENSIC MEDICINE AND TOXICOLOGY. By J. DIXON MANN, M.D., F.R.C.P. Third Edition. Revised and Enlarged, 21s.

MEDICAL JURISPRUDENCE AND TOXICOLOGY. By WM. A. BREND, M.A., M.B., B.Sc. In Leather, pocket size. Price 8s. 6d.

MANUAL OF NURSING, Medical and Surgical. By LAWRENCE HUMPHRY, M.A., M.D., M.R.C.P. Thirtieth Edition. Fully illustrated. Price 3s. 6d.

FOODS AND DIETARIES. A Manual of Clinical Dietetics. By R. W. BURNET, M.D., F.R.C.P. Fourth Edition. Revised, Cloth, 4s.

POISONS; their Effects and Detection. By A. WYNTER BLYTH, M.R.C.S., F.I.C., F.C.S. Fourth Edition, Revised. In large 8vo, Cloth. Illustrated, 21s. net.

TREATMENT OF DISEASES OF THE DIGESTIVE SYSTEM. By ROBERT SAUNDBY, M.D., F.R.C.P. 3s. net.

TOXINES AND ANTI-TOXINES. By CARL OPPENHEIMER, Ph.D., M.D. Translated by C. A. MITCHELL, B.A., F.I.C. In Cloth. Price 7s. 6d. net.

Second Edition. Rewritten throughout. Cloth. 7s. 6d. net.

MEDICAL ETHICS.

By ROBERT W. SAUNDBY, M.D., M.Sc., LL.D., F.R.C.P.

"Will be a valuable source of information for all who are uncertain as to what custom prescribes and what it prohibits."—*British Medical Journal.*

London: CHAS. GRIFFIN & CO., LTD., Exeter Street, Strand.

TEMPERANCE MALE NURSES' CO-OPERATION, LTD.,

Head Office:

43, New Cavendish Street, Portland Place, London, W. ;

Branch Offices } 176, Oxford Road, Manchester.

 } 9, Leamington Terrace, Edinburgh.

Incorporated under the Industrial and Provident Societies Act, 1893. (Regd. No. 3685.)

Highly trained Male Nurses for Mental, Medical, Surgical, Catheter, and all cases.
Terms from £1 11s. 6d. upwards. Masseurs and Valet Attendants also supplied.

TELEPHONE NOS.

London 1478 Paddington.
Manchester 5213 Central.
Edinburgh 399 Y. Central.

TELEGRAMS :

"Tactear, London."
"Tactear, Manchester."
"Surgical, Edinburgh."

M. D. GOLD, Sec.

MALE NURSES' (TEMPERANCE) CO-OPERATION, LIMITED.

Only
Addresses -

{ London : 10, THAYER STREET, MANCHESTER SQUARE, W.
Manchester: 235, BRUNSWICK ST. (Facing Owens College).
Edinburgh : 7, TORPICHEN STREET.

Superior Trained MALE NURSES for Medical, Surgical, Mental, Dipsomania, Fever, and Travelling Cases supplied at a moment's notice, Day or Night. All Nurses supplied by this Association are TOTAL ABSTAINERS. SKILLED MASSEURS supplied. Terms: £1 11s. 6d. to £2 2s. or upwards per week. Nurses to receive their own fees.

F. ROUSE WALSH, Secretary.

Telephones { (London), 538, Paddington.
(Manchester), 4699, Central.
(Edinburgh), 2715, Central.

Telegrams { "Assuaged, London."
"Assuaged, Manchester."
"Assuaged, Edinburgh."

RONUK
(SANITARY)
Floor Polish

*By Royal Warrant
to H.M. The King.*

**PREVENTS
THE HARBOURING
OF GERMS.**

USED IN THE
**PRINCIPAL
HOSPITALS**

Booklet with full particulars on application to
'RONUK,' Ltd., PORTSLADE,
near BRIGHTON,
SANITARY POLISH MANUFACTURERS,
and Contractors for the first preparation and
polishing of all kinds of flooring.
DEPOTS :—LONDON AND MANCHESTER.

All Information with
reference to

ADVERTISEMENTS

FOR THIS JOURNAL

MAY BE OBTAINED OF

J. H. BOOTY & SON,
30, Holborn, London, E.C.

Telegrams : "Praeda, London."
Telephone : 1717 Holborn.

BROMURAL

(α -Monobrom isovalerianyl-urea).

POWERFUL NERVE SEDATIVE

is the combination of bromides and valerian with the organic urea basis which, as regards its action, occupies a position midway between the hypnotics on one hand and the bromides and valerian preparations on the other.

"Bromural is the drug of the future as a hypnotic and sedative in many mental affections whose symptoms developed on a neurasthenic or hysterical basis, including instances of melancholia, traumatic insanity, paranoia, maniacal depression, and hallucinations. The drug is especially valuable for insanity in the female sex." (County Asylum, E.—Med. Councillor W—, Director of the Asylum.)

KNOLL & CO., 8, HARP LANE, LONDON, E.C.

ALWAYS USE

REFLEX

FLOOR POLISH.

REQUIRES NO MIXING WHATEVER.

Brilliantly Polishes Floors, Linoleums, Floorcloths, &c.

Economical, Cleanly, Healthful; Maximum of Lustre for Minimum of Labour.

GEO. T. COX & SONS, Ltd.,

9 & 10, ST. MARY-AT-HILL, EASTCHEAP, LONDON, E.C.

This Polish is specially adapted for use in Public Institutions and other large establishments. Samples Free on application.

H.R.H. PRINCESS CHRISTIAN'S TRAINED NURSES.

Fully (Three years) Hospital Trained Nurses for Medical, Surgical, Infectious, Mental, Maternity, and Massage Cases

Can be supplied on the Shortest Notice.

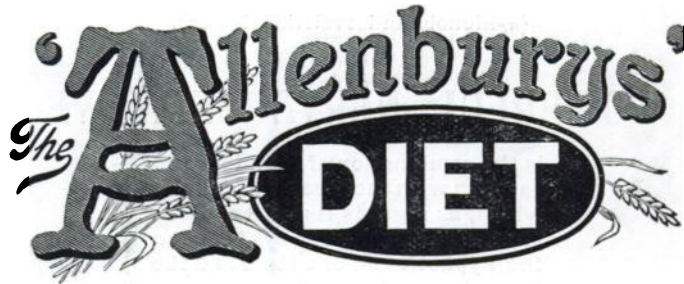
APPLY BY TELEGRAM OR OTHERWISE TO

The Superintendent, 1, CLARENCE VILLAS, WINDSOR.

Telephone—
0157, WINDSOR.

Telegraphic Address—
"NURSES, WINDSOR."

*A Peptonised Food that can be made in a minute, the
addition of boiling water only being necessary.*



A PANCREATISED MILK AND CEREAL FOOD.

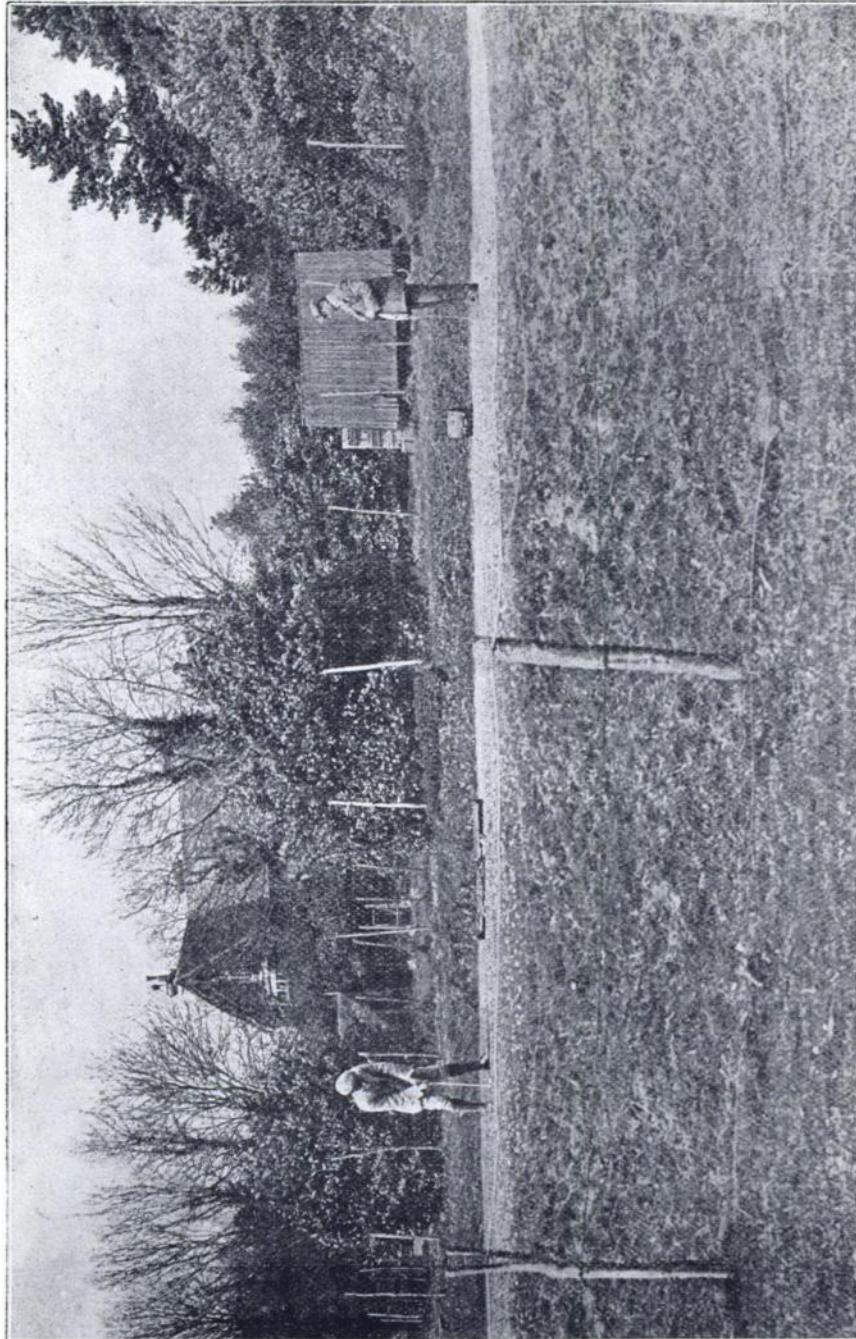
By the use of the "Allenburys" Diet all trouble of peptonising milk and farinaceous foods is overcome. In the sick room it will be found extremely useful as the food is easily digested and assimilated, is quickly made, and only the exact quantity required need be prepared at a time.

The "Allenburys" Diet is made from pure rich milk and whole wheat, both ingredients being largely pre-digested during manufacture. It can be taken by those who cannot digest cow's milk, and provides a light and very nourishing diet for Invalids, Dyspeptics and the Aged.

For travellers by sea or land this complete food will be found exceedingly valuable.

~~~~~  
**A Sample with full particulars sent free on request.**  
~~~~~

ALLEN & HANBURY'S Ltd.,
Plough Court, Lombard Street, London, E.C.



SOUTH BEACON, HADLOW DOWN, BUXTED, SUSSEX,
For Borderland Patients. **PHILIP H. HARMER.**