

Epidemiology of soil-transmitted helminthiases-related mortality in Brazil

FRANCISCO R. MARTINS-MELO^{1,2*}, ALBERTO N. RAMOS JR¹, CARLOS H. ALENCAR¹, MAURICÉLIA S. LIMA^{1,3} and JORG HEUKELBACH^{1,4}

¹ Department of Community Health, School of Medicine, Federal University of Ceará, Fortaleza, Brazil

² Federal Institute of Education, Science and Technology of Ceará, Caucaia, Brazil

³ São José Hospital for Infectious Diseases, Fortaleza, Brazil

⁴ College of Public Health, Medical and Veterinary Sciences, Division of Tropical Health and Medicine, James Cook University, Townsville, Queensland, Australia

(Received 13 September 2016; revised 17 October 2016; accepted 3 November 2016; first published online 20 January 2017)

SUMMARY

Soil-transmitted helminth (STH) infections are widely distributed in tropical and subtropical areas, including Brazil. We performed a nationwide population-based study including all deaths in Brazil from 2000 to 2011, in which STHs (ascariasis, trichuriasis and/or hookworm infection) were mentioned on death certificates, either as underlying or as associated causes of death. Epidemiological characteristics, time trends and spatial analysis of STH-related mortality were analysed. STHs was identified on 853/12 491 280 death certificates: 827 (97·0%) deaths related to ascariasis, 25 (2·9%) to hookworm infections, and 1 (0·1%) to trichuriasis. The average annual age-adjusted mortality rate was 0·34/1 000 000 inhabitants (95% confidence interval: 0·27–0·44). Females, children <10 years of age, indigenous ethnic groups and residents in the Northeast region had highest STH-related mortality rates. Nationwide mortality decreased significantly over time (annual percent change: –5·7%; 95% CI: –6·9 to –4·4), with regional differences. We identified spatial high-risk clusters for STH-related mortality mainly in the North, Northeast and South regions. Diseases of the digestive system and infectious/parasitic diseases were the most commonly associated causes of death mentioned in the STH-related deaths. Despite decreasing mortality in Brazil, a considerable number of deaths is caused by STHs, with ascariasis responsible for the vast majority. There were marked regional differences, affecting mainly children and vulnerable populations.

Key words: soil-transmitted helminthiasis, neglected tropical diseases, mortality, spatial analysis, time trend analysis, Brazil.

INTRODUCTION

Soil-transmitted helminth (STH) infections – ascariasis, trichuriasis and hookworm infections – are among the most common chronic infectious diseases worldwide, mainly affecting socio-economically deprived populations (WHO, 2012, 2016a). STHs are main causes of disease burden in school-aged children in low- and middle-income countries, in severe cases resulting in anaemia, reduced school performance, stunting, malnutrition and death (Bethony *et al.* 2006; Hotez *et al.* 2008; WHO, 2012, 2016a).

About 1·5 billion individuals worldwide are estimated to be infected with at least one STH species (WHO, 2016a), causing about 5 million DALYs (disability-adjusted life years) losts (Hotez *et al.* 2014; Pullan *et al.* 2014). About 300 million people suffer from severe morbidity attributed to STHs, resulting in an estimation of 12 000–135 000 deaths annually (Bethony *et al.* 2006; WHO, 2016b).

* Corresponding author: Federal Institute of Education, Science and Technology of Ceará, Rua Francisco da Rocha Martins, s/n, Pabussu, CEP 61609-090, Caucaia, Ceará, Brazil. E-mail: rogerlandio@bol.com.br

STHs have considerable public health importance in Brazil, occurring throughout the national territory. They are concentrated mainly in poor and vulnerable groups living in areas with inadequate water supply and sanitation, combined with lack of access to healthcare services and low levels of education (Fonseca *et al.* 2010; Brazilian Ministry of Health, 2012; Scholte *et al.* 2013). As there is no specific national STH control programme, cases are usually detected in a passive manner by health facilities. STH carriers are also detected by the Schistosomiasis Surveillance Programme within the routine stool examinations, and treated (Brazilian Ministry of Health, 2012). The lack of a mandatory reporting system and an active surveillance programme throughout the national territory makes the true burden and the impact of disease unknown and probably underestimated in Brazil (Brazilian Ministry of Health, 2012; Couto *et al.* 2014). There are few large-scale surveys and systematic studies on prevalence in the general population in the country (Scholte *et al.* 2013; Chammartin *et al.* 2014). It is estimated that 26·1–29·7 million Brazilian people are infected with *Ascaris lumbricoides*, 14·4–19·2 million with *Trichuris trichiura*

and 4.7–11.3 million with hookworms (Scholte *et al.* 2013; Vos *et al.* 2016). In 2014, an estimated 11.5 million Brazilian children (about 3 million pre-school-age children and 8.5 million school-age children) were in need of treatment and preventive interventions from STH infections (WHO, 2016b).

As STHs are considered diseases rarely leading to death, studies that evaluate the burden of STH-related mortality in endemic countries are limited (Silva *et al.* 1997; Pullan *et al.* 2014). Here we present the epidemiological patterns of STH-related mortality in Brazil from 2000 to 2011.

MATERIALS AND METHODS

Study area and population

Brazil, the largest South American country, has a total territory of 8.5 million km², and a population of about 205 million in 2015. The country is divided into five geographic regions (South, Southeast, Central-West, North and Northeast), 27 Federal Units (26 states and one Federal District), and 5570 municipalities (*Instituto Brasileiro de Geografia e Estatística – IBGE*; <http://www.ibge.gov.br>).

We analysed nationwide secondary mortality data from 2000 to 2011. We included all death certificates, in which any STH was mentioned as underlying or associated causes of death (the so-called multiple causes of death). We used the following ICD-10 codes: B77 (ascariasis), B76 (hookworm diseases) and B77 (trichuriasis) (WHO, 2014).

Data sources

Mortality data were obtained from the Mortality Information System (*Sistema de Informações sobre Mortalidade – SIM*) of the Brazilian Ministry of Health. *SIM* data are based on death certificates (a standardized form to be filled out by physicians). These data are public domain and freely available on the website of the IT Department of the Ministry of Health's Unified Health System (*Departamento de Informática do Sistema Único de Saúde – DATASUS*, <http://www2.datasus.gov.br>). We processed a total of 324 mortality datasets, with about 12.5 million entries. The detailed methods of downloading and consolidation of databases has been described previously (Martins-Melo *et al.* 2012a, b, 2016a, b).

Population data were obtained from the Brazilian Institute of Geography and Statistics (*Instituto Brasileiro de Geografia e Estatística – IBGE*), based on two demographic censuses (2000 and 2010) and population estimates for inter-census years (2001–2009 and 2011), and extracted from the DATASUS website (<http://tabnet.datasus.gov.br/cgi/deftohtm.exe?ibge/cnv/popuf.def>).

Statistical analysis

We present means and standard deviations (s.d.) for continuous variables (age), and absolute numbers and proportions with their respective 95% confidence intervals (95% CI) for categorical variables (sex, race/ethnicity, marital status, place of residence, year of occurrence, underlying and associated causes of death).

We calculated crude mortality rates by 1 000 000, stratified by sex, age group, race/ethnicity and place of residence (regions and states), using the number of STH-related deaths of each calendar year as numerator and the respective population at risk as denominator. Age-standardized rates were calculated by the direct standardization method, using the 2010 census population. Age categories used for standardization and calculation of age-specific mortality rates were: 0–9, 10–19, 20–29, 30–39, 40–49, 50–59, 60–69 and ≥70 years. Based on the crude mortality rates, we estimated rate ratios (RR) and 95% CIs. To determine the differences among study groups we applied Pearson's chi-squared (χ^2) or Fisher's exact test, as applicable. We used the Student's *t* and Mann–Whitney tests to compare the mean and median age at death (in years) between groups, respectively.

Time trend analysis was performed by joinpoint regression models (Kim *et al.* 2000). Joinpoints were identified via a log-linear method, where the direction or the magnitude of the trends changed significantly (Kim *et al.* 2000). Statistical significance of up to three joinpoints was tested using the Monte Carlo permutation test, which chooses the best segment for each model (Kim *et al.* 2000). The annual percent change (APC) and 95% CI were calculated for each segment to quantify the trend and to assess the statistical significance.

We analysed the spatial patterns of STH-related mortality using all 5565 Brazilian municipalities of residence as units of analysis (territorial division of 2010). We excluded deaths with unknown municipality. Overall crude STH-related mortality rates by municipality-level over the study period were calculated dividing the average number of STH-related deaths by the population size in the middle of the study period, expressed per 100 000 inhabitants. We also calculated smoothed mortality rates (per 100 000 inhabitants) using a local empirical Bayesian method to minimize random variations and provide greater stability of mortality rates in municipalities with small populations and rare events (Assunção *et al.* 1998; Martins-Melo *et al.* 2015).

We used Global Moran's *I* statistic (values ranging from –1 to +1) to assess the extension of global spatial autocorrelation. Values close to zero indicate spatial randomness; positive values indicate positive spatial autocorrelation; and negative values

indicate negative spatial autocorrelation (Cliff and Ord, 1981). Then, we evaluated the existence of local autocorrelation [local indicators of spatial association (LISA)], using Local Moran's I statistic (Anselin, 1995). LISA was used to identify significant hotspots (High–High: high values spatial clusters), coldspots (Low–Low: low values spatial clusters) and spatial outliers (High–Low: high values surrounded with low values or Low–High: low values surrounded with high values) of mortality rates (Anselin, 1995). For spatial representation of the Local Moran's index, Moran Maps were used including municipalities with statistically significant differences ($P < 0.05$).

We present other diseases and disorders mentioned on the death certificates that were associated with STH-related deaths. All causes reported on the death certificates were analysed, even ill-defined (classified in Chapter XVIII – R00–R99 of the ICD-10), and those characterized by the WHO as modes of death, such as cardiorespiratory arrest and multiple organ failure (Santo, 2007; Martins-Melo et al. 2012c, 2016c).

Statistical analysis was performed using Stata software version 11.2 (StataCorp LP, College Station, TX, USA). Joinpoint regression analyses were performed using Joinpoint Regression Program version 4.0.4 (United States National Cancer Institute, Bethesda, MD, USA). ArcGIS software version 9.3 (Esri, Redlands, CA, USA) and TerraView software version 4.2 (*Instituto Nacional de Pesquisas Espaciais – INPE, São José dos Campos, SP, Brazil*) were used for data entry, processing, spatial analysis, calculation of autocorrelation indicators and construction of thematic maps.

Ethics

The study was approved by the Ethical Review Board of the Federal University of Ceará (Fortaleza, Brazil). Analysis was based on publicly available secondary anonymized data, with no possibility of identification of individuals.

RESULTS

STH-related deaths

During the study period, a total of 12 491 280 deaths were recorded in Brazil. STHs were identified in 853 deaths (0.01%): 60.7% (518/853) as an underlying cause and 39.3% (335/853) as an associated cause of death. Ascariasis was responsible for 827 deaths (97.0%) [61.8% (511) as underlying cause and 38.2% (316) as associated cause], hookworm infections for 25 deaths (2.8%) [28.0% (7) as underlying cause and 72.0% (18) as associated cause], and trichuriasis for one death (0.1%, associated cause).

The average number of deaths per year was 71.1 (95% CI: 61.1–81.0), ranging from 51 in 2011 to 94 in 2001.

Demographic characteristics

Predominant demographic characteristics of STH-related deaths were: female sex [51.8% (442/853)], age 0–9 years [72.8 (617/848)], brown population group [48.1% (362/752)], and residency in the Northeast region [40.1% (342/853)] (Table 1). The state of São Paulo had the largest proportion of deaths [14.9% (127/853)] (Supplementary Table 1).

Mean and median age at death for all STH-related deaths was 15.8 years (s.d.: ± 25.1) and 3.0 years (range: 0–104.9), respectively. The mean and median age at death was significantly lower in ascariasis-infected than in hookworm-infected individuals: mean 14.8 years (s.d.: ± 24.2 years) vs 48.5 (s.d. ± 31.9 years), $P < 0.001$; and median 2.9 (range: 0–104.9 years) vs 46.4 (range: 0.7–94.7 years), $P < 0.001$.

STH-related mortality rates

The average annual crude mortality rate for the period was 0.38 deaths/1 000 000 inhabitants (0.30–0.48 deaths/1 000 000 inhabitants), and the age-adjusted mortality rate 0.34 deaths/1 000 000 inhabitants (0.27–0.44 deaths/1 000 000 inhabitants) (Table 1). Mortality rates were slightly higher in females than males, with no significant difference (Table 1). Children aged <10 years had the highest age-specific mortality rates, with a significant difference when compared with young adults (aged 20–29 years), followed by advanced age (≥ 70 years) (Table 1). Indigenous ethnic groups had a 6-fold higher rate than caucasians (Table 1).

The Northeast region showed highest mortality rates, but there were no statistically significant differences among regional rates, as compared with the South region (Table 1). The highest average annual mortality rates by state of residence were observed in the states of Paraná (0.84 deaths/1 000 000 inhabitants), Amazonas (0.74 deaths/1 000 000 inhabitants), Bahia (0.68 deaths/1 000 000 inhabitants), Maranhão (0.68 deaths/1 000 000 inhabitants) and Rio Grande do Norte (0.66 deaths/1 000 000 inhabitants) (Fig. 1; Supplementary Table 1).

Trends over time

Age-adjusted STH-related mortality rates decreased significantly at the national level over the entire period (APC: -5.7% ; 95% CI: -6.9 to -4.4), with differences between regions. Similar to the nationwide pattern, there was a significant decrease in the Southeast (APC: -7.9% ; 95% CI: -12.3 to -3.3)

Table 1. Epidemiological characteristics and STH-related mortality rates (per 1 000 000 inhabitants) by sex, age group, race/colour and region of residence in Brazil, 2000–2011

Variables	Deaths		Crude rate (95% CI) ^a	Age-adjusted rate (95% CI) ^{a,b}	RR ^c	P-value
	n	%				
All STH-related deaths	853	100.0	0.38 (0.30–0.48)	0.34 (0.27–0.44)	–	–
Sex						
Male	411	48.2	0.38 (0.27–0.52)	0.34 (0.24–0.49)	0.96 (0.60–1.53)	0.860
Female	442	51.8	0.39 (0.28–0.54)	0.34 (0.24–0.49)	1.00	
Age group (years) ^d						
0–9	617	72.8	1.43 (1.09–1.87)	–	23.44 (5.71–96.25)	<0.001
10–19	33	3.9	0.07 (0.02–0.22)	–	1.17 (0.19–7.25)	0.864
20–29	24	2.8	0.06 (0.02–0.22)	–	1.00	–
30–39	28	3.3	0.08 (0.03–0.28)	–	1.39 (0.21–9.16)	0.734
40–49	29	3.4	0.11 (0.03–0.38)	–	1.89 (0.29–12.30)	0.498
50–59	27	3.2	0.17 (0.05–0.57)	–	2.72 (0.41–18.30)	0.282
60–69	27	3.2	0.25 (0.07–0.87)	–	4.19 (0.62–28.11)	0.109
>70	63	7.4	0.77 (0.33–1.76)	–	12.63 (2.48–64.36)	<0.001
Region of residence						
North	76	8.9	0.43 (0.20–0.91)	0.32 (0.13–0.76)	0.85 (0.33–2.17)	0.728
Northeast	342	40.1	0.56 (0.39–0.80)	0.47 (0.32–0.70)	1.10 (0.58–2.10)	0.766
Southeast	247	29.0	0.26 (0.17–0.40)	0.25 (0.16–0.39)	0.52 (0.26–1.03)	0.054
South	164	19.2	0.50 (0.30–0.85)	0.46 (0.27–0.80)	1.00	–
Central-West	24	2.8	0.15 (0.04–0.55)	0.14 (0.04–0.53)	0.30 (0.07–1.33)	0.094
Race/colour ^d						
White	298	39.6	0.27 (0.18–0.40)	–	1.00	–
Black	76	10.1	0.51 (0.24–1.09)	–	1.86 (0.78–4.46)	0.156
Brown	362	48.1	0.41 (0.29–0.58)	–	1.49 (0.88–2.54)	0.137
Indigenous	16	2.1	1.71 (0.37–8.00)	–	6.28 (1.10–35.86)	0.018

STH, Soil-transmitted helminths; CI, confidence intervals; RR, rate ratio; –, not calculated.

^a Average annual crude- and age-adjusted mortality rates (per 1 000 000 inhabitants), calculated using the average number of STH-related deaths as a numerator and population size in the middle of the studied period as a denominator. Population data on race/colour were derived from the Brazilian National Censuses (2000 and 2010). Population size in relation to race/colour for the middle of the period was derived from an average of the 2000 and 2010 censuses.

^b Age-standardized to the 2010 Brazilian population.

^c Based on crude mortality rates.

^d Data not available in all cases (age group, 5; and race/colour, 101).

and South (APC: -14.3% ; 95% CI: -19.4 to -8.8) regions (Fig. 2; Table 2). The North, Northeast and Central-West regions presented stability during the study period (Fig. 2; Table 2).

Both males and females presented significantly decreasing mortality trends over the period (Table 2). The age group 40–49 years presented an increase of mortality rates, whereas in all other age groups mortality decreased. This trend was statistically significant only in the <10-year-old group (Table 2).

Spatial patterns

In total, 8.9% (495/5565) of municipalities in 26 of the 27 Brazilian states recorded at least one STH-related death. The spatial distribution of the average annual crude and smoothed mortality rates by municipality of residence are presented in Figs 3 and 4, respectively. Crude STH-related mortality rates ranged from 0 to 5.54 deaths/100 000 inhabitants among Brazilian municipalities, and smoothed mortality rates from 0 to 1.24 deaths/

100 000 inhabitants. We found municipalities with high STH mortality rates in all Brazilian regions, located mainly in the North, Northeast and South regions (Figs 3 and 4).

Global Moran's I index showed a highly significant and slightly positive spatial autocorrelation (Moran's I: 0.116; z -score: 137.62; $P < 0.001$). Figure 5 presents the clusters of municipalities identified according to LISA analysis. During the study period, we identified high-risk clusters (High/High) covering areas in all Brazilian regions. There were concentric high-risk clusters in the states of Amazonas and Pará (North region), Maranhão and Bahia (Northeast region) and Paraná (South region) (Fig. 5). Clusters of municipalities with low mortality rates (Low/Low) covered large areas in states of Central-West, Southeast and Northeast regions (Fig. 5).

Associated causes of death

The main associated causes of death mentioned on death certificates with STHs as the underlying

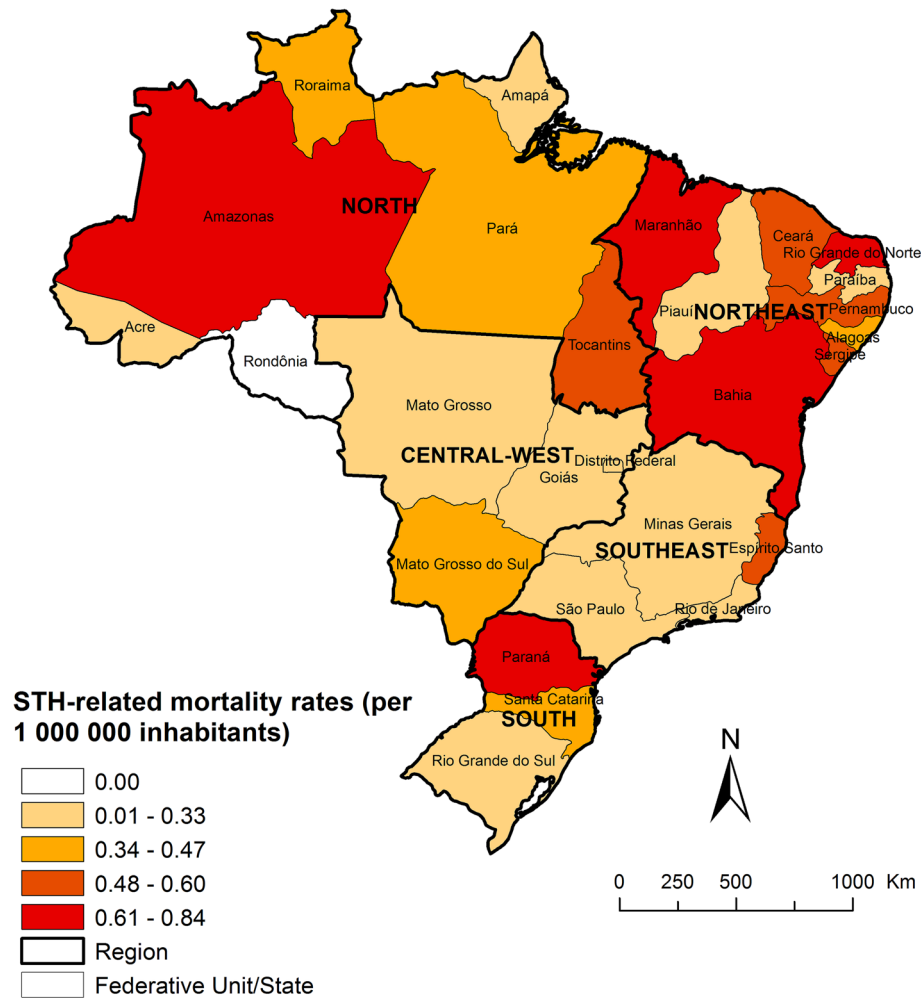


Fig. 1. Spatial distribution of average annual age-adjusted STH-related mortality rates (per 1 000 000 inhabitants) by state of residence in Brazil, 2000–2011.

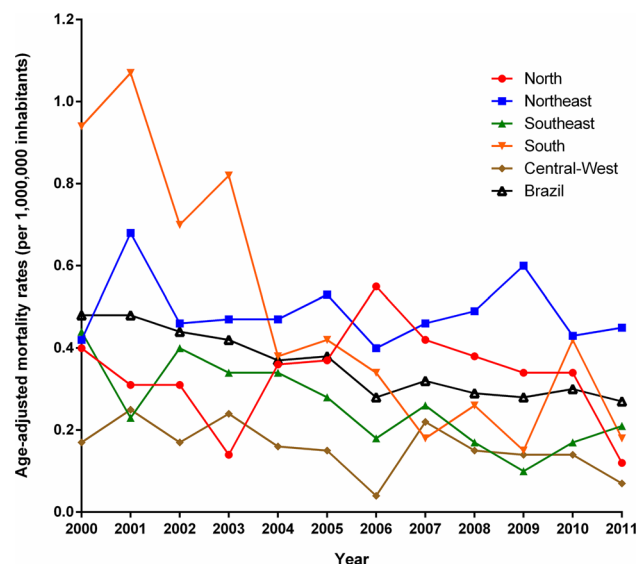


Fig. 2. Trends of age-adjusted STH-related mortality rates (per 1 000 000 inhabitants) in Brazil and regions, 2000–2011.

cause included diseases of the digestive system (45.2%), in particular paralytic ileus and intestinal obstruction without hernia and diseases of peritonium (Supplementary Table 2). The second group

was infectious and parasitic diseases (40.0%), particularly sepsis, and intestinal infectious diseases. Other associated causes frequently mentioned included: malnutrition (19.3%), respiratory arrest

Table 2. Joinpoint regression analysis with corresponding APC of STH-related mortality rates (per 1 000 000 inhabitants) in Brazil, 2000–2011

Variable	Mortality rate/period		APC	95% CI	P-value
	Initial – 2000	Final – 2011			
Sex					
Male	0.45	0.22	-5.0*	-7.6 to -2.4	<0.001
Female	0.52	0.31	-6.3*	-9.2 to -3.2	<0.001
Age group (years)					
0–9	2.31	1.03	-6.6*	-8.6 to -4.5	<0.001
10–19	0.09	0.06	-3.2	-12.5 to 7.1	0.473
20–29	0.07	0.03	-5.0	-16.7 to 8.4	0.384
30–39	0.12	0.10	-6.2	-13.2 to 1.3	0.065
40–49	0.10	0.16	2.8	-6.1 to 12.4	0.501
50–59	0.16	0.05	-7.6	-18.1 to 4.3	0.146
60–69	0.12	0.26	-3.9	-13.2 to 6.4	0.386
>70	0.63	0.75	-1.9	-6.5 to 2.8	0.352
Region of residence					
Brazil	0.48	0.27	-5.7*	-6.9 to -4.4	<0.001
North	0.40	0.12	-0.2	-6.3 to 6.4	0.950
Northeast	0.42	0.45	-0.8	-3.8 to 2.4	0.582
Southeast	0.44	0.21	-7.9*	-12.3 to -3.3	<0.001
South	0.94	0.18	-14.3*	-19.4 to -8.8	<0.001
Central-West	0.17	0.07	-5.3	-11.2 to 1.0	0.060

APC, annual percent change; CI, confidence intervals.

* Significantly different from 0 ($P < 0.05$).

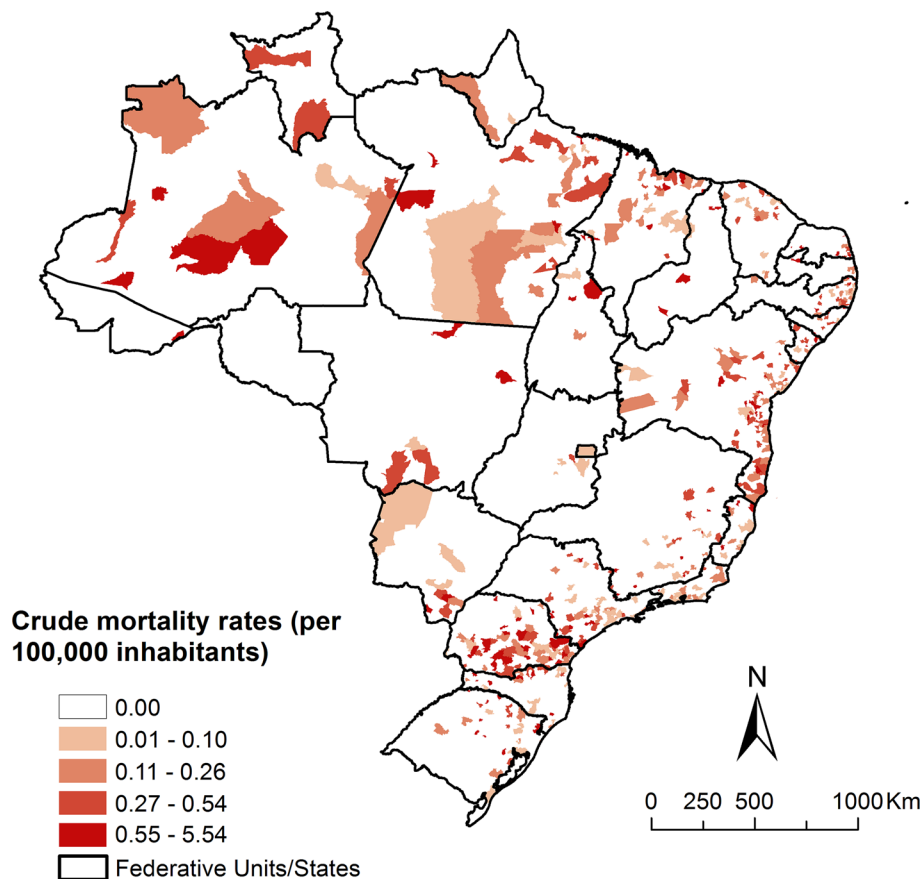


Fig. 3. Spatial distribution of average annual crude STH-related mortality rates (per 100 000 inhabitants) by municipality of residence in Brazil, 2000–2011.

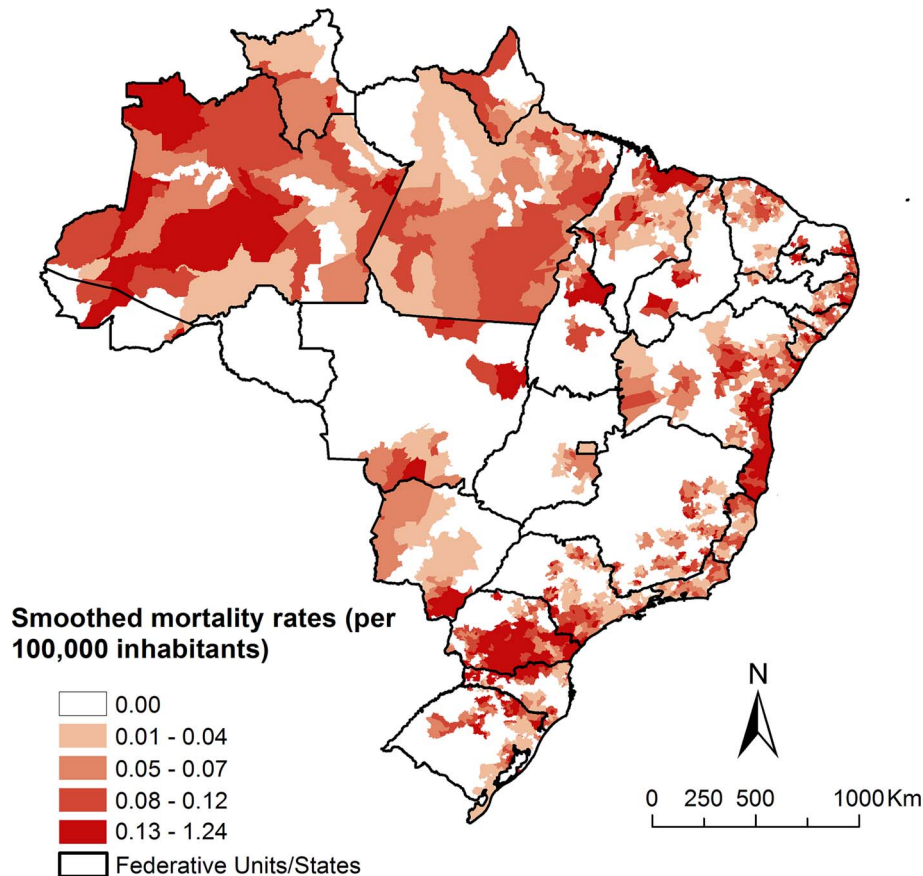


Fig. 4. Spatial distribution of average annual average annual Bayesian-smoothed STH-related mortality rates (per 100 000 inhabitants) by municipality of residence in Brazil, 2000–2011.

(13.7%), respiratory failure (12.2%) and pneumonia (11.4%) (Supplementary Table 2).

When STHs were mentioned as an associated cause, the most common underlying causes included the infectious and parasitic diseases (25.7%), diseases of the digestive system (22.7%) and diseases of the respiratory system (19.1%) (Supplementary Table 3). The intestinal infectious diseases (12.8%) were the principal specific underlying cause, followed by pneumonia (10.4%), malnutrition (9.9%) and paralytic ileus and intestinal obstruction without hernia (7.8%) (Supplementary Table 3).

DISCUSSION

To the best of our knowledge, this is the first nationwide study on STH-related mortality in Brazil. We covered a 12-year study period, highlighted epidemiological patterns and provided a comprehensive overview of deaths by these helminth infections. Ascariasis caused by far the highest death burden among STHs. Mortality was higher among females, children and indigenous populations. We identified a decreasing mortality trend at national level, and spatial high-risk clusters. Infectious/parasitic and digestive diseases/disorders were the most commonly associated causes of death recorded in

the STH-related deaths as underlying or associated causes of death.

The higher STH-related mortality among children reflects the prevalence and morbidity pattern observed in Brazil and elsewhere, with highest STH prevalence and related complications in this age group (Fonseca *et al.* 2010; Andrade *et al.* 2011; Visser *et al.* 2011). Children have been identified as particularly susceptible to STH infections, probably because their immature immunological system, and inadequate hygiene and sanitation practices, greater contact with the soil, with other children and domestic animals (Ferreira *et al.* 2000; Andrade *et al.* 2011). Nutritional impairment caused by STHs, may have a significant impact on growth, and cognitive and physical development in children (Silva *et al.* 1997). Higher mortality among the older people as compared to adults, may reflect severe impairment of nutritional status by STHs, in addition to comorbidities with other common chronic conditions in this age group (Hurtado-Guerrero *et al.* 2005). Despite a lower number of absolute deaths, the highest proportion of hookworm-related deaths was observed in middle-aged adults and the elderly, with significant difference in mean age at death.

There was no difference in STH-related mortality between genders. Some studies found a higher STH

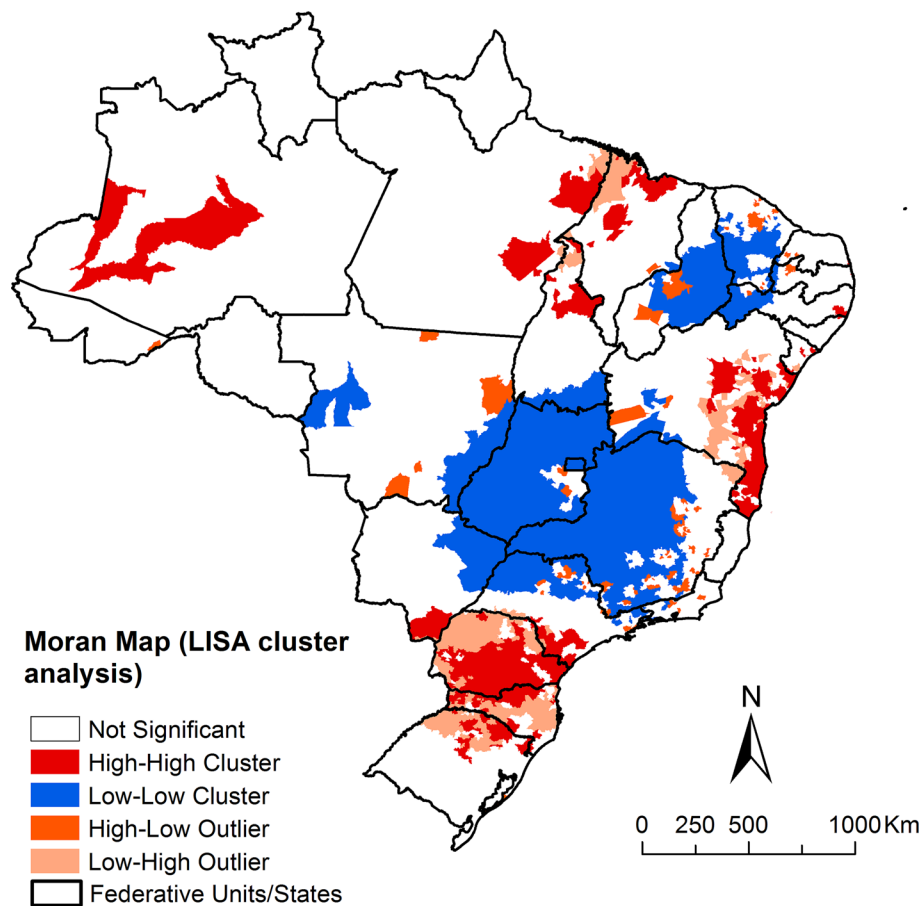


Fig. 5. LISA cluster analysis (Moran Map) of STH-related mortality rates by municipality of residence in Brazil, 2000–2011.

prevalence in males (Ferreira *et al.* 2000; Prado *et al.* 2001; Hurtado-Guerrero *et al.* 2005; Fonseca *et al.* 2010), others in females (Andrade *et al.* 2011; Silva *et al.* 2014). Differences of STH prevalence between genders can be influenced by specific activities and behaviours in the studied population groups, such as those in which there is close contact with the soil and water (Andrade *et al.* 2011).

The high death rate in indigenous populations reflects the vulnerability of these ethnic groups, indicating possible social, economic, health and sanitary disparities, and limited access to health services in the determination of complications caused by STHs (Miranda *et al.* 1999; Scolari *et al.* 2000). It is known that indigenous population suffer from higher prevalence and morbidity caused by STHs (Miranda *et al.* 1998, 1999). In an epidemiological survey of STH infections conducted in schoolchildren of an urban area and an indigenous reserve in the municipality of Ortigueira, State of Paraná in the South of Brazil, indigenous children had higher overall prevalence and intensity of STH infections than schoolchildren from the urban area (Scolari *et al.* 2000).

The highest mortality burden due to *A. lumbricoides* among STH infections reflects the pattern

found in Brazil and other countries, where the highest number of STH estimates is usually attributed to *A. lumbricoides* infection (Fonseca *et al.* 2010; Chammartin *et al.* 2013, 2014; Scholte *et al.* 2013; Pullan *et al.* 2014). The high frequency of *A. lumbricoides* can be explained by high viability of eggs with infectivity in the soil for months and up to years (Fonseca *et al.* 2010; Mandarino-Pereira *et al.* 2010; Andrade *et al.* 2011). Ascariasis is considered an infection with low case fatality, but complications due to aggregation or migration of adult worms, mainly in children, may occur, leading to intestinal obstruction, biliary and pancreatic ascariasis, and appendicitis, possibly leading to death (Silva *et al.* 1997; Scolari *et al.* 2000).

The main conditions or causes of death associated with STH-related deaths as underlying or associated cause partly reflect the clinical description and natural history of severe cases, especially complications arising from *A. lumbricoides* infection such as intestinal obstruction, malnutrition and peritonitis (Silva *et al.* 1997). The presence of associated causes of death considered terminal conditions, such as sepsis, respiratory failure, respiratory arrest, and pneumonia, may reflect the severity of the STH-related complications in the affected

individuals (Bethony *et al.* 2006). In addition, there is association with other intestinal infectious diseases; polyparasitism may aggravate the conditions of patients with STH infections (Naing *et al.* 2013; Bisanzio *et al.* 2014).

STH-related mortality rates varied among Brazilian regions, with highest rates in the Northeast. The spatial distribution of STH-related mortality is coherent with patterns of prevalence observed by previous studies, indicating that the geographical distribution of *A. lumbricoides* infection, leading cause of death among STHs, and *T. trichiura* is concentrated in the North region and along the eastern coast of Brazil, while high-risk areas of hookworm infection is concentrated in the Amazonas region (Scholte *et al.* 2013; Chammartin *et al.* 2014). The high prevalence of STHs in some areas is related to unfavourable socio-economic, educational and sanitary conditions, agglomeration of people, access to health services, inappropriate use and contamination of soil, water and food, and ecological conditions that are favourable for the development infective stages (Fonseca *et al.* 2010; Andrade *et al.* 2011; Chammartin *et al.* 2014; WHO, 2016a).

Age-adjusted STH-related mortality rates showed a declining trend at national level during the study period. This observed pattern can be explained in part by the expansion of primary healthcare services that have allowed greater access to broad-spectrum anthelmintic drugs, in addition to improved living and sanitary conditions in the last decade (Fonseca *et al.* 2010). However, there is neither systematic disease surveillance nor a compulsory notification of cases, consequently leading to underestimated numbers of infection rates. There are no systematic epidemiological studies for prevalence estimation on national level. The poorest regions of the country, the North and Northeast, did not present declining trends of mortality during the study period, highlighting the need for specific control programmes, and improved access to health (Fonseca *et al.* 2010).

Parasitic infections are usually detected passively by the health care centres. In endemic regions for schistosomiasis, STHs are detected during routine stool examinations for *Schistosoma mansoni* (Brazilian Ministry of Health, 2012). The Ministry of Health of Brazil launched a national integrated campaign to confront STHs in the period 2012–2015 together with other NTDs, such as leprosy and trachoma (Brazilian Ministry of Health, 2012). This campaign aimed to reduce the parasite load of schoolchildren (5–14 years) from public elementary education in priority municipalities (Brazilian Ministry of Health, 2012, 2016). The campaign is based on the administration of broad-spectrum drugs to schoolchildren, with the recommendation of preventive and collective treatment in priority

endemic municipalities with prevalence >20%. High-risk communities with a greater number of people in extreme poverty and difficult access to health services and basic sanitation were also included (Brazilian Ministry of Health, 2012, 2016). In 2013, the campaign was conducted in 852 municipalities, with more than 2.8 million treatments for STHs in schoolchildren. In 2014, the activities were expanded to 1227 municipalities, and 4.7 million children treated for STHs (Brazilian Ministry of Health, 2016).

The implementation of appropriate surveillance mechanisms and a mandatory reporting system for STH infections throughout the national territory could provide more accurate epidemiological data on prevalence and would allow geographical mapping of high-risk areas to better target disease surveillance and control.

Despite improved *SIM* coverage and quality of information about causes of death during the last years, secondary mortality data may present inconsistencies of information over time and between regions (Martins-Melo *et al.* 2012b, 2016a, b). Coverage and proportion of deaths from ill-defined causes varies among Brazilian regions, with higher proportions of underreporting of deaths and ill-defined causes of death in the North and Northeast regions (Santo, 2007; Martins-Melo *et al.* 2012b, 2016a). Interpretation of data should consider these limitations. The underlying cause of death may have been coded as a complication or aggravation associated with STHs. We collected information based on multiple causes of death, i.e. the mention of some STH in any field rather than only the underlying cause, to reduce this error. In fact, an additional 39% of cases were identified by using multiple causes of death. Some demographic variables such as race/ethnicity included a considerable proportion of missing data. In spatial analysis, crude rates suffer from instability in expressing the risk of a rare event or when the population of the geographic unit of analysis is small. Thus, we used smoothed rates by means of local Bayesian estimation method (Martins-Melo *et al.* 2015). Despite all mentioned limitations, the data analysed are consistent and representative for a country of continental dimensions over a period of 12 years.

Concluding remarks

STHs are neglected causes of death, mainly in the most underprivileged population groups in Brazil. STH-related deaths may be largely underestimated in the country. Specific surveillance and control measures for STHs should be developed in high-risk areas in a multidisciplinary manner, including improvements targeting on early diagnosis and treatment, and to improve socioeconomic conditions, sanitation and health education.

SUPPLEMENTARY MATERIAL

The supplementary material for this article can be found at <https://doi.org/10.1017/S0031182016002341>

ACKNOWLEDGEMENTS

J. H. is class 1 research fellow from the Brazilian Research Council (*Conselho Nacional de Desenvolvimento Científico e Tecnológico* – CNPq).

FINANCIAL SUPPORT

This research received no specific grant from any funding agency, commercial or not-for-profit sectors.

REFERENCES

- Andrade, E. C., Leite, I. C. G., Vieira, M. T., Abramo, C., Tibiriçá, S. H. C. and Silva, P. L. (2011). Prevalence of parasitic intestinal diseases in a quilombola community, in the Municipality of Bias Fortes, State of Minas Gerais, Brazil, 2008. *Epidemiologia e Serviços de Saúde* **20**, 337–344.
- Anselin, L. (1995). Local indicators of spatial association–LISA. *Geographical Analysis* **27**, 93–115.
- Assunção, R. M., Barreto, S. M., Guerra, H. L. and Sakurai, E. (1998). Maps of epidemiological rates: a Bayesian approach. *Cadernos de Saúde Pública* **14**, 713–723.
- Bethony, J., Brooker, S., Albonico, S. M., Geiger, M., Loukas, A., Diemert, D. and Hotez, P. J. (2006). Soil-transmitted helminth infections: ascariasis, trichuriasis, and hookworm. *The Lancet* **367**, 1521–1532.
- Bisanzio, D., Mutuku, F., Bustinduy, A. L., Mungai, P. L., Muchiri, E. M., King, C. H. and Kitron, U. (2014). Cross-sectional study of the burden of vector-borne and soil-transmitted polyparasitism in rural communities of Coast Province, Kenya. *PLoS Neglected Tropical Diseases* **8**, e2992.
- Brazilian Ministry of Health (2012). *Integrated Strategic Action Plan for the Elimination of Leprosy, Filariasis, Schistosomiasis and Onchocerciasis as a Public Health Problem, Trachoma as a Cause of Blindness and Control of Geohelminthiasis: Action Plan 2011–2015*. Brazilian Ministry of Health, Brasília, Brazil. http://bvsmis.saude.gov.br/bvs/publicacoes/plano_integrado_acoes_estrategicas_2011_2015.pdf
- Brazilian Ministry of Health (2016). *Informe Técnico – Campanha Nacional de Hanseníase, Verminoses, Tracoma e Esquistossomose 2016*. Brazilian Ministry of Health, Brasília, Brazil.
- Chammartin, F., Scholte, R. G., Guimarães, L. H., Tanner, M., Utzinger, J. and Vounatsou, P. (2013). Soil-transmitted helminth infection in South America: a systematic review and geostatistical meta-analysis. *The Lancet Infectious Diseases* **13**, 507–518.
- Chammartin, F., Guimarães, L. H., Scholte, R. G., Bavia, M. E., Utzinger, J. and Vounatsou, P. (2014). Spatio-temporal distribution of soil-transmitted helminth infections in Brazil. *Parasites & Vectors* **18**, 440.
- Cliff, A. D. and Ord, J. K. (1981). *Spatial Processes: Models & Applications*. Pion Ltd, London, UK.
- Couto, L. D., Tibiriçá, S. H., Pinheiro, I. O., Mitterofhe, A., Lima, A. C., Castro, M. F., Gonçalves, M., Silva, M. R., Guimarães, R. J., Rosa, F. M. and Coimbra, E. S. (2014). Neglected tropical diseases: prevalence and risk factors for schistosomiasis and soil-transmitted helminthiasis in a region of Minas Gerais State, Brazil. *Transactions of the Royal Society of Tropical Medicine and Hygiene* **108**, 363–371.
- Ferreira, M. U., Ferreira, C. S. and Monteiro, C. A. (2000). Secular trends in child intestinal parasitic diseases in S. Paulo city, Brazil (1984–1996). *Revista de Saúde Pública* **34**, 73–82.
- Fonseca, E. O. L., Teixeira, M. G., Barreto, M. L., Carmo, E. H. and Costa, M. C. N. (2010). Prevalence and factors associated with geohelminth infections in children living in municipalities with low HDI in North and Northeast Brazil. *Cadernos de Saúde Pública* **26**, 143–152.
- Hotez, P. J., Brindley, P. J., Bethony, J. M., King, C. H., Pearce, E. J. and Jacobson, J. (2008). Helminth infections: the great neglected tropical diseases. *Journal of Clinical Investigation* **118**, 1311–1321.
- Hotez, P. J., Alvarado, M., Basáñez, M. G., Bolliger, I., Bourne, R., Boussinesq, M., Brooker, S. J., Brown, A. S., Buckle, G. and Budke, C. M. (2014). The global burden of disease study 2010: interpretation and implications for the neglected tropical diseases. *PLoS Neglected Tropical Diseases* **8**, e2865.
- Hurtado-Guerrero, A. F., Alencar, F. H. and Hurtado-Guerrero, J. C. (2005). Occurrence of enteroparasites in the elderly population of Nova Olinda do Norte, Amazonas, Brazil. *Acta Amazonica* **35**, 487–490.
- Kim, H. J., Fay, M. P., Feuer, E. J. and Midthune, D. N. (2000). Permutation tests for joinpoint regression with applications to cancer rates. *Statistics in Medicine* **19**, 335–351.
- Mandarino-Pereira, A., Souza, F. S., Lopes, C. W. G. and Pereira, M. J. S. (2010). Prevalence of parasites in soil and dog feces according to diagnostic tests. *Veterinary Parasitology* **170**, 176–181.
- Martins-Melo, F. R., Alencar, C. H., Ramos, A. N., Jr. and Heukelbach, J. (2012a). Epidemiology of mortality related to Chagas' disease in Brazil, 1999–2007. *PLoS Neglected Tropical Diseases* **6**, e1508.
- Martins-Melo, F. R., Ramos, A. N., Jr., Alencar, C. H., Lange, W. and Heukelbach, J. (2012b). Mortality of Chagas' disease in Brazil: spatial patterns and definition of high-risk areas. *Tropical Medicine & International Health* **17**, 1066–1075.
- Martins-Melo, F. R., Ramos, A. N., Jr., Alencar, C. H. and Heukelbach, J. (2012c). Multiple causes of death related to Chagas' disease in Brazil, 1999 to 2007. *Revista da Sociedade Brasileira de Medicina Tropical* **45**, 591–596.
- Martins-Melo, F. R., Pinheiro, M. C. C., Ramos, A. N., Jr., Alencar, C. H., de Moraes Bezerra, F. S. M. and Heukelbach, J. (2015). Spatiotemporal patterns of schistosomiasis-related deaths, Brazil, 2000–2011. *Emerging Infectious Diseases* **21**, 1820–1824.
- Martins-Melo, F. R., Ramos, A. N., Jr., Alencar, C. H. and Heukelbach, J. (2016a). Mortality from neglected tropical diseases in Brazil, 2000–2011. *Bulletin of the World Health Organization* **94**, 103–110.
- Martins-Melo, F. R., Ramos, A. N., Jr., Alencar, C. H. and Heukelbach, J. (2016b). Trends and spatial patterns of mortality related to neglected tropical diseases in Brazil. *Parasite Epidemiology and Control* **1**, 56–65.
- Martins-Melo, F. R., Ramos, A. N., Jr., Cavalcanti, M. G., Alencar, C. H., and Heukelbach, J. (2016c). Neurocysticercosis-related mortality in Brazil, 2000–2011: epidemiology of a neglected neurologic cause of death. *Acta Tropica* **153**, 128–136.
- Miranda, R. A., Xavier, F. B. and Menezes, R. C. (1998). Intestinal parasitism in a Parakanã indigenous community in southwestern Pará State, Brazil. *Cadernos de Saúde Pública* **14**, 507–511.
- Miranda, R. A., Xavier, F. B., Nascimento, J. R. L. and Menezes, R. C. (1999). Prevalence of intestinal parasitism in Tembê tribe indian settlements, Brazilian Eastern Amazon. *Revista da Sociedade Brasileira de Medicina Tropical* **32**, 389–393.
- Naing, C., Whittaker, M. A., Nyunt-Wai, V., Reid, S. A., Wong, S. F., Mak, J. W. and Tanner, M. (2013). Malaria and soil-transmitted intestinal helminth co-infection and its effect on anemia: a meta-analysis. *Transactions of the Royal Society of Tropical Medicine and Hygiene* **107**, 672–683.
- Prado, M. S., Barreto, M. L., Strina, A., Faria, J. A. S., Nobre, A. A. and Jesus, S. R. (2001). Prevalence and intensity of infection by intestinal parasites in school-aged children in the City of Salvador (Bahia State, Brazil). *Revista da Sociedade Brasileira de Medicina Tropical* **34**, 99–101.
- Pullan, R. L., Smith, J. L., Jasrasaria, R. and Brooker, S. J. (2014). Global numbers of infection and disease burden of soil transmitted helminth infections in 2010. *Parasites & Vectors* **7**, 37.
- Santo, A. H. (2007). Cysticercosis-related mortality in the State of São Paulo, Brazil, 1985–2004: a study using multiple causes of death. *Cadernos de Saúde Pública* **23**, 2917–2927.
- Scholte, R. G., Schur, N., Bavia, M. E., Carvalho, E. M., Chammartin, F., Utzinger, J. and Vounatsou, P. (2013). Spatial analysis and risk mapping of soil-transmitted helminth infections in Brazil, using Bayesian geostatistical models. *Geospatial Health* **8**, 97–110.
- Scolari, C., Torti, C., Beltrame, A., Matteelli, A., Castelli, F., Gulletta, M., Ribas, M., Morana, S. and Urbani, C. (2000). Prevalence and distribution of soil-transmitted helminth (STH) infections in urban and indigenous schoolchildren in Ortigueira, State of Paraná, Brazil: implications for control. *Tropical Medicine & International Health* **5**, 302–307.
- Silva, N., Chan, M. and Bundy, D. (1997). Morbidity and mortality due to ascariasis: re-estimation and sensitivity analysis of global numbers at risk. *Tropical Medicine & International Health* **2**, 513–518.
- Silva, A. M. B., Bouth, R. C., Costa, K. S., Carvalho, D. C., Hirai, K. E., Prado, R. R., Araújo, S. G., Pereira, A. C. L. and Ribeiro, K. T. S. (2014). Occurrence of intestinal parasites in riverine communities in the City of Igarapé Miri, Pará State, Brazil. *Revista Pan-Amazônica de Saúde* **5**, 45–51.

- Visser, S., Giatti, L.L., Carvalho, R.A.C. and Guerreiro, J.C.H. (2011). Study of the association between socio-environmental factors and the prevalence of intestinal parasitosis in the suburbs of the city of Manaus in the state of Amazonas, Brazil. *Ciência & Saúde Coletiva* **16**, 3481–3492.
- Vos, T., Barber, R.M., Bell, B., Bertozzi-Villa, A., Biryukov, S., Bolliger, I., Charlson, F., Davis, A., Degenhardt, L., Dicker, D., Duan, L., Erskine, H., Feigin, V.L., Ferrari, A.J., Fitzmaurice, C., Fleming, T., Graetz, N., Guinovart, C., Haagsma, J., Hansen, G.M., Hanson, S.W., Heuton, K.R., Higashi, H., Kassebaum, N., Kyu, H., Laurie, E., Liang, X., Lofgren, K., Lozano, R. and MacIntyre, M.F. et al. (2016). Global, regional, and national incidence, prevalence, and years lived with disability for 310 diseases and injuries, 1990–2015: a systematic analysis for the Global Burden of Disease Study 2015. *The Lancet* **388**, 1545–1602.
- World Health Organization (2012). *Soil-Transmitted Helminthiases. Eliminating Soil-Transmitted Helminthiases as a Public Health Problem in Children: Progress Report 2001–2010 and Strategic Plan 2011–2020*. World Health Organization, Geneva, Switzerland.
- World Health Organization (2014). *Statistical Classification of Diseases and Related Health Problems (ICD)*, 10th Revision. World Health Organization, Geneva, Switzerland. <http://apps.who.int/classifications/icd10/browse/2010/en>
- World Health Organization (2016a). *Soil-transmitted Helminth Infections – Fact Sheet*. World Health Organization, Geneva, Switzerland. <http://www.who.int/mediacentre/factsheets/fs366/en/>
- World Health Organization (2016b). *PCT databank – Soil-Transmitted Helminthiases*. World Health Organization, Geneva, Switzerland. http://www.who.int/neglected_diseases/preventive_chemotherapy/sth/en/