

Access
leading
journals in
your subject

Cambridge Core

Explore today at [cambridge.org/core](https://www.cambridge.org/core)

Cambridge Core



CAMBRIDGE
UNIVERSITY PRESS

CONTENTS

Nutrition

Belloir, P., Méda, B., Lambert, W., Corrent, E., Juin, H., Lessire, M. and Tesseraud, S.
Reducing the CP content in broiler feeds: impact on animal performance, meat quality and nitrogen utilization 1881

Al-Yasiry, A. R. M., Kiczorowska, B., Samolińska, W., Kowalczyk-Vasilev, E. and Kowalczyk-Pecka, D.
The effect of *Boswellia serrata* resin diet supplementation on production, hematological, biochemical and immunological parameters in broiler chickens 1890

Li, X. L., He, W. L., Yang, M. L., Yan, Y. M., Xue, Y. H. and Zhao, S. T.
Effect of dietary supplementation of *Ligustrum lucidum* on performance, egg quality and blood biochemical parameters of Hy-Line Brown hens during the late laying period 1899

Superchi, P., Saleri, R., Borghetti, P., Ferrarini, G., Cavalli, V., Sereni, M., Zavattini, S. and Sabbioni, A.
Effects of a dietary crude fibre concentrate on growth in weaned piglets 1905

Strathe, A. V., Bruun, T. S. and Hansen, C. F.
Sows with high milk production had both a high feed intake and high body mobilization 1913

Schaafsma, F. J. W. C., van Doorn, D. A., Schonewille, J. T., van Riet, M. M. J., Visser, P., Blok, M. C. and Hendriks, W. H.
Evaluation of methodological aspects of digestibility measurements in ponies fed different haylage to concentrate ratios 1922

Montes-Sánchez, J. J. and Villalba, J. J.
Understanding medusahead low intake and palatability through *in vitro* digestibility and fermentation kinetics 1930

Mateos, I., Ranilla, M. J., Saro, C. and Carro, M. D.
Shifts in microbial populations in Rusitec fermenters as affected by the type of diet and impact of the method for estimating microbial growth (¹⁵N v. microbial DNA) 1939

Lippolis, K. D., Cooke, R. F., Silva, L. G. T., Schubach, K. M., Brandao, A. P., Marques, R. S., Larson, C. K., Russell, J. R., Arispe, S. A., DelCurto, T. and Bohnert, D. W.
Effects of organic complexed or inorganic Co, Cu, Mn and Zn supplementation during a 45-day preconditioning period on productive and health responses of feeder cattle 1949

Ferreira, A. C., Vieira, J. F., Barbosa, A. M., Silva, T. M., Bezerra, L. R., Nascimento Jr, N. G., de Freitas, J. E., Jaeger, S. M. P. L., Oliveira, P. de A. and Oliveira, R. L.
Effect of replacing ground corn and soybean meal with licuri cake on the performance, digestibility, nitrogen metabolism and ingestive behavior in lactating dairy cows 1957

Physiology and functional biology of systems

Ebeid, T. A., Twfeek, F. A., Assar, M. H., Bealish, A. M., Abd El-Karim, R. E. and Ragab, M.
Influence of pre-storage incubation on hatchability traits, thyroid hormones, antioxidative status and immunity of newly hatched chicks at two chicken breeder flock ages 1966

Gliozzi, T. M., Turri, F., Manes, S., Cassinelli, C. and Pizzi, F.
The combination of kinetic and flow cytometric semen parameters as a tool to predict fertility in cryopreserved bull semen 1975

Perez, B. C., Balieiro, J. C. C., Ventura, R. V., Bruneli, F. A. T. and Peixoto, M. G. C. D.
Inbreeding effects on *in vitro* embryo production traits in Guzerá cattle 1983

Boer, H. M. T., Butler, S. T., Stötzel, C., te Pas, M. F. W., Veerkamp, R. F. and Woelders, H.
Validation of a mathematical model of the bovine estrous cycle for cows with different estrous cycle characteristics 1991

Heidari, F., Dirandeh, E., Ansari Pirsaraei, Z. and Colazo, M. G.
Modifications of the G6G timed-AI protocol improved pregnancy per AI and reduced pregnancy loss in lactating dairy cows 2002

Behaviour, welfare and health

Gottardo, F., Scollo, A., Contiero, B., Bottacini, M., Mazzoni, C. and Edwards, S. A.
Prevalence and risk factors for gastric ulceration in pigs slaughtered at 170 kg 2010

Luo, L., Geers, R., Reimert, I., Kemp, B., Parmentier, H. K. and Bolhuis, J. E.
Effects of environmental enrichment and regrouping on natural autoantibodies-binding danger and neural antigens in healthy pigs with different individual characteristics 2019

Potes, Y., Oliván, M., Rubio-González, A., de Luxán-Delgado, B., Díaz, F., Sierra, V., Arroyo, L., Peña, R., Bassols, A., González, J., Carreras, R., Velarde, A., Muñoz-Torres, M. and Coto-Montes, A.
Pig cognitive bias affects the conversion of muscle into meat by antioxidant and autophagy mechanisms 2027

Alhamada, M., Debus, N. and Bocquier, F.
An automated method for the evaluation of ram libido in real mating conditions 2036

Brunberg, E. I., Bergslid, I. K., Bøe, K. E. and Sørheim, K. M.
The ability of ewes with lambs to learn a virtual fencing system 2045

Farming systems and environment

Leiber, F., Schenk, I. K., Maeschli, A., Ivemeyer, S., Zeitz, J. O., Moakes, S., Klocke, P., Staehli, P., Notz, C. and Walkenhorst, M.
Implications of feed concentrate reduction in organic grassland-based dairy systems: a long-term on-farm study 2051

Lessire, F., Froidmont, E., Shortall, J., Hornick, J. L. and Dufrasne, I.
The effect of concentrate allocation on traffic and milk production of pasture-based cows milked by an automatic milking system 2061

Romero, G., Panzalis, R. and Ruegg, P.
Relationship of goat milk flow emission variables with milking routine, milking parameters, milking machine characteristics and goat physiology 2070

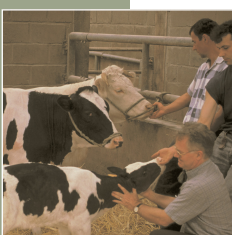
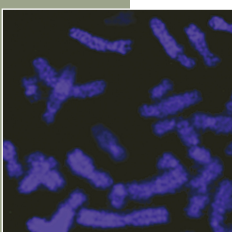
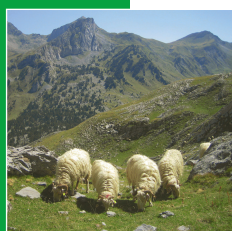
Scheel, C., Traulsen, I., Auer, W., Müller, K., Stamer, E. and Krieter, J.
Detecting lameness in sows from ear tag-sampled acceleration data using wavelets 2076

Product quality, human health and well-being

Heyrman, E., Millet, S., Tuytens, F. A. M., Ampe, B., Janssens, S., Buys, N., Wauters, J., Vanhaecke, L. and Aluwé, M.
Olfactory evaluation of boar taint: effect of factors measured at slaughter and link with boar taint compounds 2084

Madeira, M. S., Lopes, P. A., Costa, P., Coelho, D., Alfaia, C. M. and Prates, J. A. M.
Reduced protein diets increase intramuscular fat of *psaos major*, a red muscle, in lean and fatty pig genotypes 2094

Antonelo, D. S., Mazon, M. R., Nubiato, K. E. Z., Gómez, J. F. M., Brigida, D. J., Gomes, R. C., Netto, A. S., Leme, P. R. and Silva, S. L.
Effects of immunocastration and β -adrenergic agonists on the performance and carcass traits of feedlot finished Nellore cattle 2103



Cambridge Core

For further information about this journal
please go to the journal web site at:
cambridge.org/animal



MIX
Paper from
responsible sources
FSC® C007785

CAMBRIDGE
UNIVERSITY PRESS