

# JOURNAL OF MENTAL SCIENCE.

Asylum Reports have been received for 1914-15 from those marked with an asterisk:—*English and Welsh County*.—Beds, Berks, Bucks, Cambridge, Carmarthen,\* Chester, Chester (Parkside), Cornwall, Cumberland, Denbigh, Derby, Devon, Dorset,\* Durham, Essex\* (Brentwood), (Colchester),\* Glamorgan,\* Gloucester, Hants,\* Isle of Wight, Isle of Man, Hereford, Hereford, Kent,\* Lancashire (Lancaster), (Rainhill), (Prestwich),\* (Whittingham), (Winwick), Leicester, Lincoln (Kesteven), (Bracebridge), London County, London City,\* Middlesex, Monmouth,\* Norfolk, Northampton, Northumberland,\* Nottingham, Oxford, Salop,\* Somerset (Wells), (Taunton), Stafford (Stafford),\* (Burntwood),\* (Cheddleton),\* Suffolk, Surrey (Brookwood), (Netherne), Sussex (East),\* (Chichester), Warwick, Wilts, Worcester (Powick),\* (Barnsley Hall), Yorkshire (Wakefield),\* (Wadsley), (Menstone), (Clifton), (Beverley), (Storthes Hall). *Borough*.—Birmingham (Winson Green), (Rubery Hill), Bristol, Canterbury, Cardiff, Derby, Exeter, Hull, Haywards Heath,\* Ipswich, Leicester, Middlesborough, Newcastle, Norwich, Nottingham, Plymouth, Portsmouth, Sunderland, West Ham. *Hospitals*.—Manchester, Woford, Barnwood,\* Albert, Lincoln, St. Luke's St. Andrew's St. Ann's Coppice, Warnford, Coton Hill, Bethlem, Earlswood,\* Bootham, The Retreat (York),\* Broadmoor, Rampton; Royal Eastern Counties Institution for Idiots (Colchester),\* *Metropolitan Asylums Board*.\* *Scotland*.—Aberdeen (Kingseat),\* Argyll, Ayr, Dumfries,\* Edinburgh,\* Midlothian, Fife,\* Dundee, Montrose, Inverness,\* Lanark,\* Barony, Glasgow (District), (Royal),\* (Woodilee), Govan,\* Kirklands, Perth,\* Murthly, Roxburgh,\* Stirling,\* Baldovan. *Ireland*.—Armagh, Ballinasloe, Belfast, Carlow, Castlebar, Clonmel, Cork, Downpatrick,\* Ennis, Enniscorthy, Farnham, Kilkenny, Killarney, Letterkenny, Limerick, Londonderry, Maryborough, Monaghan, Mullingar, Omagh, Palmerston, Richmond, St. Patrick's, Sligo, Waterford.

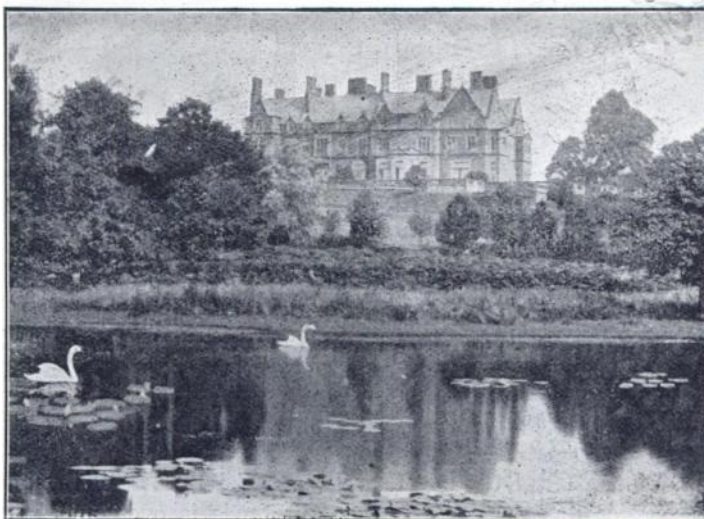
The following Asylum Reports have also come to hand:—Egypt, Cape of Good Hope, Nova Scotia, New Brunswick, Victoria, New York,\* Massachusetts Hospital, Ontario, Verdun, Warren, Pennsylvania, Philadelphia Friends, Binghamton, Willard, Northampton, Long View, South Australia, Cleveland, Matteawan,\* New South Wales, Agra and Oudh, Assam, Madras, Bengal, Bombay, Central Provinces, Rangoon, Punjab, North-Western Provinces, Tezpur, Mississippi, Pennsylvania Hospital, Washington, Utica, Long Island, Virginia Central, Illinois West, New Hampshire, Butler, Maryland, Pennsylvania West, South Mountain, Manhattan, Indiana East, Connecticut, Carolina N., Dakota N., Ohio, Carthage, Buffalo, Michigan East, Missouri, Alt Scherbitz, Massachusetts Board,\* Virginia West, Pennsylvania, Danville, Sheppard and Pratt Hospital, Baltimore, Pennsylvania, Harrisburgs, Pennsylvania, Norristown, Aarhus, Lebanon, Hudson River, Rochester, Taunton, Iowa, Jamaica, Grahamstown, Pretoria, Albany, Tarrytown, Straits Settlements, Lower Austria.

Authors of Original Papers receive 25 reprints of their articles free of cost if application be made on the slips when returning proof. If any *extra* reprints are required, notice should be at the same time sent to the Printers, Messrs. ADLARD & SON & WEST NEWMAN, LTD., 23, Bartholomew Close, London, E.C., who will supply them at a fixed charge. Unless instructions are sent by authors of Papers when the proofs are returned, no copies can be guaranteed.

The copies of the *Journal of Mental Science* are regularly sent by carrier, who in every case obtains a receipt of delivery, to the Ordinary and Honorary Members of the Association. Complaints of non-receipt of the JOURNAL should be sent to Messrs. ADLARD. Any change of address should be intimated to the General Secretary.

## BOREATTON PARK.

Founded by the late W. H. O. SANKEY, M.D., F.R.C.P., for the reception of a limited number of ladies and gentlemen mentally afflicted, and now conducted on the same lines by his son, E. H. O. SANKEY, M.A., M B., B.C.Cantab.



The house, a first-class country Mansion, specially adapted for its purpose, stands about 400 ft. above the sea and commands magnificent views of Welsh mountain scenery.

The Gardens slope to the West, and lead to the Deer Park, one of the oldest in the kingdom.

There is fishing both for trout and coarse fish in the pools in the Deer Park, and the right of fishing in about 5 miles of the River Perry is leased.

There are Hot Houses and Orchard House.

Private Golf Course of 18 holes, Tennis Courts, and Croquet Lawns.

So far as possible the patients of both sexes take their meals and associate at all times with the family of the Superintendent, the object being to make the house as much as possible like an ordinary country house.

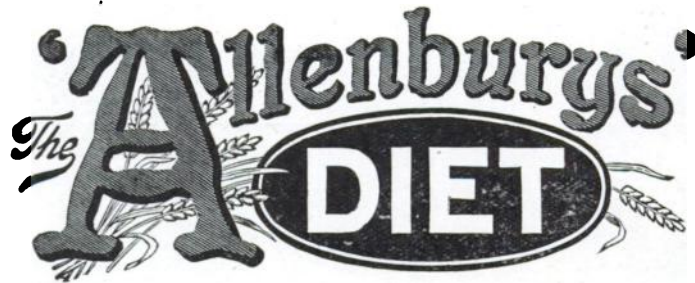
Arrangements can be made for friends of the Patients to reside in the house should they desire to do so.

There is good stable accommodation, and Horses, Carriages and Motor are provided.

For further particulars apply—

**Dr. SANKEY, Boreatton Park, Baschurch, Salop.**

## Mental or Physical Fatigue



### A PARTIALLY PRE-DIGESTED MILK AND WHEATEN FOOD.

When brain or body is weary the digestive powers are weakened and distaste for ordinary food is often experienced. Under such circumstances the "ALLENBURYS" DIET is especially valuable. It is pleasant to take, easily digested and assimilated, and speedily restorative. Thus it helps the system to recover tone and vigour.

By the use of the "ALLENBURYS" DIET all trouble of peptonising milk and farinaceous foods is overcome. In the sick room it will be found extremely useful as the food is easily digested and assimilated, is quickly made, and only the exact quantity required need be prepared at a time.

The "ALLENBURYS" DIET is made from pure, rich milk and whole wheat, both ingredients being partially pre-digested during manufacture. It can be taken by those who cannot digest cow's milk, and provides a light and very nourishing diet for Invalids, Dyspeptics and the Aged.

For travellers by sea or land this complete food will be found exceedingly valuable.

**Made in a minute. Add boiling water only.**

**A Sample with full particulars sent free on request.**

**ALLEN & HANBURYS Ltd.,**  
**37 Lombard Street, London, E.C.**

# SOUTH BEACON.

## HADLOW DOWN, BUXTED, SUSSEX.

ESTABLISHED 1892.

*Telegrams:* "Hadlow Down."      *Stations:* Buxted, Mayfield or Heathfield.

**40 Acres of  
Farm and  
Recreation  
Ground.  
Riding,**



**Driving,  
Motoring,  
Golf  
and all  
Outdoor  
recreations.**

**For the Treatment of Nervous or slight Mental Breakdown.**

**TERMS FROM 3 GUINEAS PER WEEK.**

---

## THE CROFT.



**A comfortable cottage residence, where one gentleman can have special care and attention without necessarily coming into contact with other patients.**

**If desirable he can enjoy all the recreations provided at South Beacon—Motoring, Riding, Golf.**

Now Ready. Crown 8vo. **6s. 6d.** net.

## **STUTTERING AND LISPING**

**By E. W. SCRIPTURE, Ph.D., M.D.**

THE MEDICAL PRESS.—“Since the publication of Kussmaul’s classical work we doubt anyone has given us anything so practical on speech defects and their remedies as the writer whose book is now under review. The causes, symptoms, diagnosis, and treatment of stuttering are fully dealt with, and the hints on therapeutics are of very special value. . . . This is a thoroughly scientific book on the right lines by an original worker, and its careful perusal will be of infinite service to those who have to treat speech defects in their practice.”

**MACMILLAN & CO., Ltd., London.**

---

ALWAYS USE

# **REFLEX**

**FLOOR POLISH.**

**REQUIRES NO MIXING WHATEVER.**

**Brilliantly Polishes Floors, Linoleums, Floorcloths, &c.**

*Economical, Cleanly, Healthful; Maximum of Lustre for Minimum of Labour.*

**GEO. T. COX & SONS, Ltd.,**

**31, KING WILLIAM STREET, LONDON BRIDGE, E.C.**

This Polish is specially adapted for use in Public Institutions and other large establishments. Samples Free on application.



# JOURNAL OF MENTAL SCIENCE.

CONTENTS FOR APRIL, 1917.

Pages

## Original Articles.—

Zola's Studies in Mental Disease; by J. Barfield Adams, L.R.C.P., L.R.C.S., M.P.C.—Dreams and their Interpretation, with Special Application to FREUDISM; by Sir Robert Armstrong-Jones, M.D., F.R.C.P., F.R.C.S.—Remarks upon the Vegetative Nervous System and the Internal Secretions, by Frederic J. Farnell, M.D.—Renfrew District Asylum as a War Hospital for Mental Invalids: Some Contrasts in Administration. With an Analysis of Cases admitted during the First Year; by Major R. D. Hotchkis, R.A.M.C. . . . . 165—249

## Clinical Notes and Cases.—

A Case of Cerebral Tumour, with Tumour of Skull; by John Tattersall, M.D., B.S.Lond., M.R.C.P.Lond.—Notes on a Case of Cyst in the Third Ventricle; by D. Maxwell Ross, M.B., Ch.B.—A Case of Systematised Delirium of Persecution with Psycho-sensory Hallucinations; by R. M. Toledo, M.D. . . . . 250—260

## Reviews.—

Herbert Spencer; by Hugh Elliot.—A Study in the Philosophy of Bergson; by Gustavus Watts Cunningham, A.M., Ph.D.—The Dream Problem; by Dr. A. E. Maeder.—Downward Paths: An Inquiry into the Causes which Contribute to the Making of the Prostitute. With a Foreword by A. Maude Boyden. . . . . 260—266

## Epitome of Current Literature.—

1. Psychology.—2. Physiological Psychology—3. Clinical Neurology and Psychiatry.—4. Sociology.—5. Asylum Reports for 1915. . . . . 266—295

## Notes and News.—

The Medico-Psychological Association of Great Britain and Ireland.—Scottish Division.—Irish Division—South-Western Division.—The Mental After Care Association.—Knighthood for Dr. Armstrong-Jones.—Correspondence.—University of London, University College.—Obituary.—The Library.—Notices by the Registrar.—Notice to Contributors. . . . . 295—313

---

ADLARD AND SON AND WEST NEWMAN, LTD., IMPR., LONDON AND DORKING.