

Original Article

*Equal contribution.

Cite this article: Lawler S *et al* (2024). The long-term effectiveness of a personality-targeted substance use prevention program on aggression from adolescence to early adulthood. *Psychological Medicine* 54, 2917–2925. <https://doi.org/10.1017/S0033291724000989>

Received: 4 August 2023

Revised: 24 March 2024

Accepted: 3 April 2024

First published online: 29 April 2024

Keywords:

adolescence; aggression; personality; prevention; school

Abbreviations:


CAP: Climate and Preventure; CBT: cognitive behavioral therapy; CI: confidence interval; CONSORT: Consolidated Standards of Reporting Trials; ICSEA: index of community socio-educational advantage; MAR: missing at random; MI: motivational interviewing; RCT: randomized controlled trial; SES: socio-economic status

Corresponding author:

Emma L. Barrett;

Email: emma.barrett@sydney.edu.au

The long-term effectiveness of a personality-targeted substance use prevention program on aggression from adolescence to early adulthood

Siobhan Lawler^{1,*}, Emma L. Barrett^{1,*} , Maree Teesson¹, Erin Kelly¹, Katrina E. Champion¹, Jennifer Debenham¹, Anna Smout¹, Cath Chapman¹, Tim Slade¹, Patricia J. Conrod^{2,3}, Nicola C. Newton¹ and Lexine Stapinski¹

¹The Matilda Centre for Research in Mental Health & Substance Use, University of Sydney, Sydney, NSW, Australia;²University of Montreal, Montreal, Canada and ³Sainte Justine Hospital Research Centre, Montreal, Canada**Abstract**

Background. Addressing aggressive behavior in adolescence is a key step toward preventing violence and associated social and economic costs in adulthood. This study examined the secondary effects of the personality-targeted substance use preventive program *Preventure* on aggressive behavior from ages 13 to 20.

Methods. In total, 339 young people from nine independent schools (M age = 13.03 years, $S.D.$ = 0.47, range = 12–15) who rated highly on one of the four personality traits associated with increased substance use and other emotional/behavioral symptoms (i.e. impulsivity, anxiety sensitivity, sensation seeking, and negative thinking) were included in the analyses (n = 145 in *Preventure*, n = 194 in control). Self-report assessments were administered at baseline and follow-up (6 months, 1, 2, 3, 5.5, and 7 years). Overall aggression and subtypes of aggressive behaviors (proactive, reactive) were examined using multilevel mixed-effects analysis accounting for school-level clustering.

Results. Across the 7-year follow-up period, the average yearly reduction in the frequency of aggressive behaviors (b = -0.42 ; 95% confidence interval [CI] -0.64 to -0.20 ; p < 0.001), reactive aggression (b = -0.22 ; 95% CI 0.35 to -0.10 ; p = 0.001), and proactive aggression (b = -0.14 ; 95% CI -0.23 to -0.05 ; p = 0.002) was greater for the *Preventure* group compared to the control group.

Conclusions. The study suggests a brief personality-targeted intervention may have long-term impacts on aggression among young people; however, this interpretation is limited by imbalance of sex ratios between study groups.

Introduction

Aggression and violence are behaviors that cause significant harm and distress to individuals and the community. The relationship between child and adolescent aggressive behavior with adult violent and non-violent crime is strong, and it is important to intervene early to interrupt the trajectory (Friedman, Taraban, Sitnick, & Shaw, 2021; Huesmann, Eron, & Dubow, 2002). Longitudinal studies show that aggressive behaviors are relatively common among young people, with 17–28% of adolescents in high-income countries self-reporting perpetration of aggressive acts (Henriksen *et al.*, 2021; Patalay & Gage, 2019). While aggression is frequently demonstrated by children, most young people show reductions in the use of aggressive behaviors throughout adolescence (Nagin & Tremblay, 1999). However, persistent or maladaptive aggression during this formative time can have long-lasting detrimental impacts including school exclusion, mental health problems and service engagement, alcohol and drug abuse, and incarceration (Bobadilla, Wampler, & Taylor, 2012; Fite, Raine, Stouthamer-Loeber, Loeber, & Pardini, 2010; Marcus, 2007; Moffitt, Caspi, Harrington, & Milne, 2002; Tremblay *et al.*, 2004).

Aggression has been differentiated by reactive (i.e. ‘hot’ or defensive) and proactive (i.e. ‘cold’ or calculated) behaviors (Raine *et al.*, 2006). While reactive aggression is hostile and emotional, proactive aggression is goal-oriented and employed in anticipation of self-serving outcomes (Bobadilla *et al.*, 2012; Raine *et al.*, 2006). Heightened reactive and proactive aggressive behaviors are characteristic of disruptive behavioral disorders in young people, and antisocial personality disorder and psychopathy in adults (Card & Little, 2006; Connor, Chartier, Preen, & Kaplan, 2010; Fite *et al.*, 2010). It is important to assess novel methods for interrupting aggressive trajectories during adolescence, as persistent aggressive behavior can indicate more serious psychopathology and accounts for a

© The Author(s), 2024. Published by Cambridge University Press. This is an Open Access article, distributed under the terms of the Creative Commons Attribution licence (<http://creativecommons.org/licenses/by/4.0/>), which permits unrestricted re-use, distribution and reproduction, provided the original article is properly cited.

significant proportion of referrals for psychological services (Fite et al., 2010; Hubbard, McAuliffe, Morrow, & Romano, 2010). Identifying whether existing approaches that effectively reduce harm from shared risk factors (substance use, mental health) can prevent aggressive behavior is critical as few evidence-based interventions exist, especially for proactive aggression which is associated with predatory behavior, violence, and psychopathy in adulthood (Cox et al., 2016; Fite et al., 2010; Matjasko et al., 2012).

Externalizing traits such as impulsivity and sensation seeking can be motivators for both reactive and proactive aggression during adolescence (Pérez Fuentes, Molero Jurado, Carrión Martínez, Mercader Rubio, & Gázquez, 2016), and there is some support for the influence of internalizing traits on aggression (Marcus, 2007). Further, substance use and mental disorders can share underlying psychopathology for other problem behaviors such as aggression, therefore targeting these shared risk factors is a promising way to prevent development and escalation of aggressive behavior (Castellanos-Ryan & Conrod, 2011; Mewton et al., 2020). School settings provide optimal contexts to deliver effective interventions to young people on a wide scale and prevent contact with the criminal justice system. Despite this, there is a lack of research examining the effectiveness of selective school-based interventions in reducing aggression over time, particularly those that target shared risk factors such as a substance and mental health, and personality. Research tends to show small-to-moderate effects for school-based prevention of aggression and violent behavior; however, long-term outcomes for programs are rarely assessed (Castillo-Eito et al., 2020; Kovalenko, Abraham, Graham-Rowe, Levine, & O'Dwyer, 2022). Existing research evaluating selective prevention is limited by quasi-experimental designs, measurement of violence through broad constructs of risk-taking, small sample sizes, short follow-up periods (average 3.65 months), and a focus on youth in clinical or indicated settings (Castillo-Eito et al., 2020; Kovalenko et al., 2022).

Effective prevention approaches typically incorporate cognitive behavioral therapy (CBT), motivational interviewing (MI), and the development of coping, social, and problem-solving skills to target known risk factors (Cox et al., 2016; Kovalenko et al., 2022; Teesson, Newton, & Barrett, 2012). The *Preventure* program is a selective prevention intervention that targets adolescents that relate highly to one of the four personality risk factors for substance use: sensation seeking, hopelessness, impulsivity, and anxiety sensitivity (Conrod, Stewart, Comeau, & Maclean, 2006; Newton et al., 2016). *Preventure* provides personality-specific coping skills via a two-session brief intervention incorporating best practice principles for substance misuse (i.e. CBT, MI). Evaluations of the *Preventure* program have demonstrated its efficacy in reducing internalizing symptomology and externalizing problems associated with aggression among young people, such as depressive symptoms, alcohol-related harms, and conduct problems (Castellanos-Ryan & Conrod, 2006; Conrod et al., 2006; Newton et al., 2016, 2022). For example, an Australian study found that compared to control, the personality-targeted *Preventure* program reduced conduct problems among young people who self-reported victimization of their peers (Kelly et al., 2020). This formative work suggests that *Preventure* may hold promise for reducing aggressive behavior; however, its effectiveness has yet to be established.

To fill this research gap, this study aims to examine the impact of the school-based *Preventure* program on reactive and proactive

aggressive behaviors over the long term from adolescence through to early adulthood.

Method

Study design

The current study examined data collected as part of a larger four-arm cluster randomized controlled trial (RCT) in 27 schools ($N = 2607$ young people) of school-based interventions to prevent substance use (the Climate and Preventure [CAP] study) (Newton, Teesson, Barrett, Slade, & Conrod, 2012; Newton et al., 2018). In line with study aims, the current analysis was restricted to data from independent schools ($n = 9$; young people from public schools were ineligible as ethics requirements precluded assessment of aggression) that were randomized to *Preventure* ($n = 4$ schools) or control ($n = 5$ schools).

Young people who provided informed consent and whose parents also provided passive consent were eligible to participate. A self-report questionnaire was administered across seven occasions from baseline to 6 months, 1, 2, 3, 5.5, and 7 years. Detailed information about the study design, sample size calculations, recruitment, randomization, and consent procedures has been described previously (Kelly et al., 2021; Newton et al., 2012, 2018).

Participants

The Consolidated Standards of Reporting Trials (CONSORT) diagram summarizes participant flow and retention rates through the study for each condition (see Fig. 1). The current study examines data obtained from 339 young people in one of the four key personality traits attending nine schools that were randomized to receive *Preventure* ($n = 145$) or education as usual ($n = 194$) (i.e. school-level randomization). Only young people who scored at least one standard deviation above the mean for any of the four traits (as measured by the SURPS) were included in the analysis to allow for comparison of young people who were most at risk of negative aggression outcomes.

Intervention

Young people rating highly on one of the four personality traits in *Preventure* schools were invited to take part in the *Preventure* program, while those rating highly in these personality traits in control schools received the usual health curriculum. Participants in the *Preventure* intervention received a workbook specific to the personality trait that they scored highly in and were allocated to the relevant personality group where they participated in two 90-min group sessions delivered 1 week apart in school by trained facilitators (i.e. clinical psychologist and co-facilitator with a minimum training of Bachelor of Psychology with Honours). Core *Preventure* intervention components were CBT and MI techniques to assist participants in understanding and modulating maladaptive thoughts, feelings, and behavioral responses specific to the personality trait, practice goal setting and discuss healthy ways of coping. Young people were provided with guidance in challenging personality-specific cognitive distortions (e.g. in the impulsivity group this includes over-attribution of hostile intent) that can lead to risky behaviors

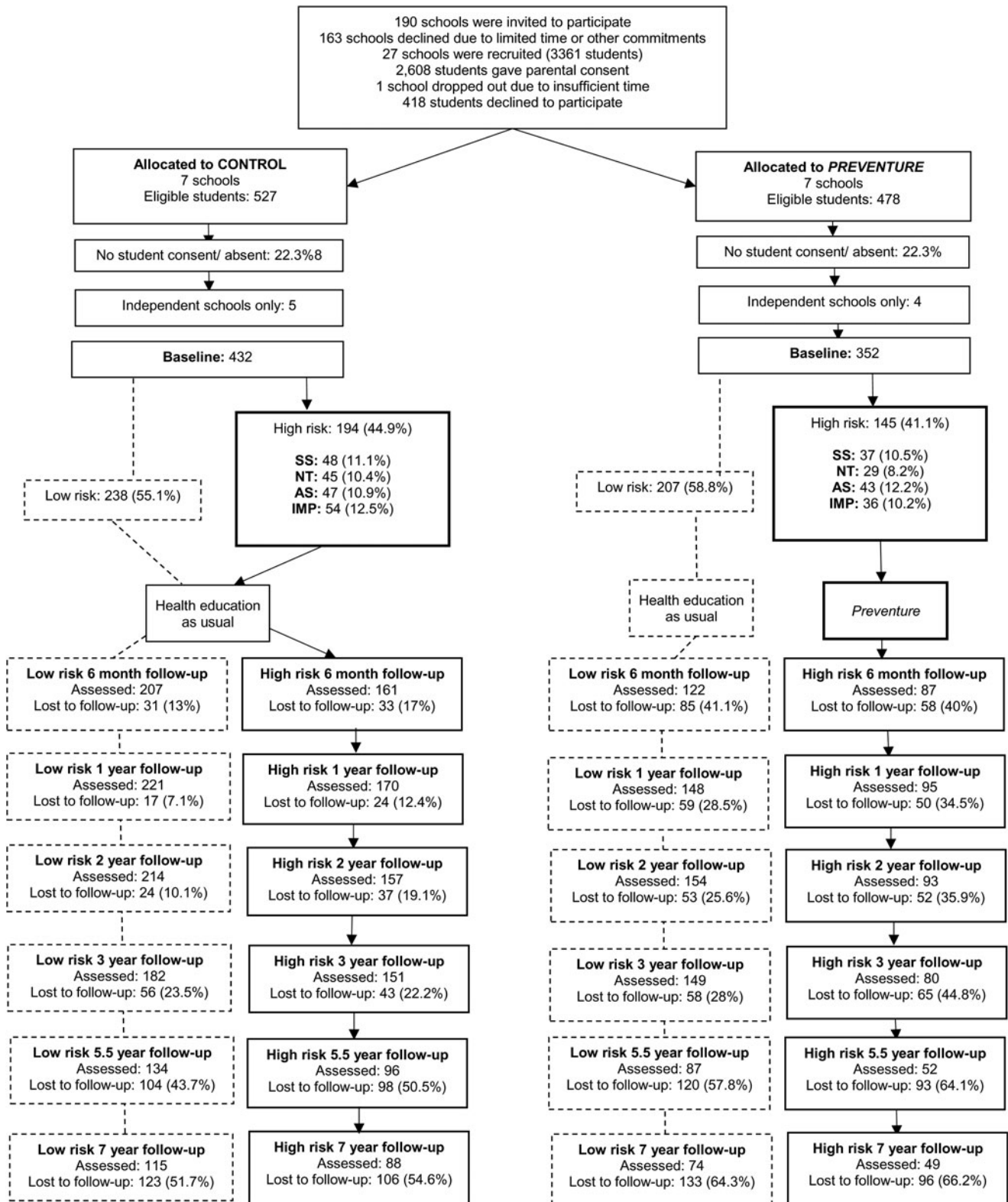


Figure 1. CONSORT flow diagram for participants in the Preventure and control groups at baseline and follow-up. SS, sensation seeking; NT, negative thinking; AS, anxiety sensitivity; IMP, impulsivity.

(e.g. aggression). Further information about the Preventure intervention and primary outcomes are reported elsewhere (Conrod et al., 2013; Newton et al., 2016, 2022; Teesson et al., 2017).

Measures

Demographic information

Young people were asked to report demographic information including age, gender, and country of birth. Socio-economic

status (SES) was measured through the Index of Community Socio-Educational Advantage (ICSEA) (ACARA, 2020) which is a measure of socio-economic advantage that has been calculated for most schools in Australia. ICSEA scores are mean centered such that scores above zero indicate the young person attends a school with an above average ICSEA score, and scores below zero indicate the school has a below average ICSEA score.

Personality

The SURPS (Woicik, Stewart, Pihl, & Conrod, 2009) is a 23-item scale that examines personality-related risk factors for mental health and substance use problems. The tool measures four dimensions of personality: impulsivity (e.g. I often don't think things through before I speak); sensation seeking (e.g. I enjoy new and exciting experiences even if they are unconventional); hopelessness (e.g. I feel that I am a failure), and anxiety sensitivity (e.g. I get scared when I experience unusual bodily sensations). Young people who scored at least one standard deviation above the school mean (~45% of the population) on one of the subscales of the SURPS were allocated to one of the four corresponding personality groups (Newton et al., 2016; Woicik et al., 2009). Young people who were classified as high on more than one personality trait were allocated to the group where they deviated most from the mean to receive the intervention most relevant to them. The SURPS is scored on a four-point Likert scale (strongly agree–strongly disagree). The relationship between the SURPS subscales and emotional and behavioral problems has also been validated among Australian adolescents (Newton et al., 2016).

Aggression

Aggression was measured using the Reactive–Proactive Aggression Questionnaire (RPQ) (Raine et al., 2006). The scale has 23 items pertaining to aggression (11 reactive, 12 proactive) to which there are three possible responses (never, sometimes, often) with scores ranging from 0 to 46. The scale has good cross-cultural validity and reliability (Fung, Raine, & Gao, 2009) with higher scores indicating higher levels of total, proactive, and reactive aggression. Proactive items include 'hurt others to win a game' whereas reactive items included 'have gotten angry when frustrated'. Composite scores on total, proactive, and reactive aggression were used to measure the outcomes of the intervention on aggression in this analysis. Internal reliability for the total, reactive, and proactive aggression scales at baseline was high (Cronbach's $\alpha = 0.92, 0.89, \text{ and } 0.87$, respectively).

Statistical analyses

Analyses were conducted in Stata IC 16 (StataCorp, 2019). Multilevel mixed-effects analysis for repeated measures was used to examine the effects of Preventure on aggression. As the data are clustered, multilevel mixed-effects models were estimated across three levels with change over time nested within individuals and individuals nested within schools. This approach uses baseline scores as the reference point, where estimates are based on participant-specific starting points and change over time (Gueorguieva & Krystal, 2004). The most appropriate model for change in the outcome over time (e.g. categorical, linear, quadratic) was determined using the likelihood ratio tests which were compared to the unconditional models. The covariance structure was selected using the fit statistics Akaike and Bayesian information criteria with the lower estimate indicating the more parsimonious and suitable model (Singer & Willett,

2003). For all three outcomes (reactive, proactive, and total aggression) the linear model and the auto-regressive residual covariance structure were selected as the best fitting structures for the data. Intervention type was dummy coded (control = 0; Preventure = 1). Time is analyzed as a continuous variable representing 6 month time blocks across the seven follow-up time points (0 'Baseline', 1 '6 months', 2 '12 months', 4 '24 months', 6 '36 months', 11 '66 months', 14 '84 months'). A group by time interaction was included to examine the difference between the two randomly allocated groups in aggression over time. All models included an individual-level and school-level random intercept and gender as a covariate to control for baseline differences between schools and individuals. There was evidence to include a random slope at the individual level in addition to the random intercept for the reactive and total aggression models but not the proactive aggression model. Models were based on the intention to treat principle, with all young people rating highly on one of the four personality traits allocated to the Preventure or control group included in the analysis ($N = 339$). Mixed models were estimated with the Stata command *xtmixed*, marginal means were calculated with the *margins* command. Effect sizes for significant interaction effects were calculated using Cohen's d (Feingold, 2013).

Power calculations based on the original trial (Newton et al., 2012) were conducted to detect a small effect size of 0.3 with 80% power assuming four time points. Based on the original sample size power calculations, this study (with seven time points) is powered to detect a small effect size (0.3). Further, a conservative estimate of 30% attrition across follow-up occasions results in a minimum of 260 young people ($n = 130$ per group) required to detect a moderate effect size which can be expected based on the existing international literature (Matjasko et al., 2012).

Missing data

Missing data were handled through maximum-likelihood estimation based on the baseline intention to treat principle which includes all young people in the study ($n = 339$). This is a valid approach to managing missing data in longitudinal analyses using all available information rather than omitting cases and assuming missing data are missing at random (MAR) (Gueorguieva & Krystal, 2004). The MAR assumption (i.e. missingness is assumed to be independent of unobserved variables) is considered reasonable as the analysis included several prior measurement occasions for key study variables and covariates (i.e. gender, baseline aggression) predictive of missingness. In addition, under the MAR assumption, multiple imputations were conducted to assess the robustness of findings against the impact of missing data (see the online Supplementary material for details).

Sensitivity analyses

A series of sensitivity analyses were conducted to confirm the accuracy of the findings. To examine the potential impact of non-normal data distribution, the analysis was repeated using square root transformed data. An exploratory Poisson analysis was also run which is suitable for left-skewed data and data that are zero inflated. Given the higher aggression scores at baseline with the Preventure group, change in aggression (e.g. change from baseline to 7 years) was plotted for each decile of baseline aggression scores to examine whether between-group differences were driven by participants with high baseline aggression scores. Lastly, a follow-up sensitivity analysis using the Mee–Chua test (Ostermann, Willich, & Lütke, 2008) for regression to the

mean was applied. Further details about the sensitivity analyses can be found in the online Supplementary materials.

Results

Sample characteristics

The mean age of participants ($N = 339$) was 13.03 years (s.d. = 0.47, range 12–15) at baseline and 55.5% were male. Participants in the study came from above average socio-educational backgrounds according to the ICSEA scores ($M = 7.26$, range -85 to 50 , s.d. = 36.53). Most young people in the sample were born in Australia (88.2%) with a small proportion of young people born in other English speaking (8.0%) and non-English speaking (3.5%) countries.

Young people were allocated to one of the four personality groups based on their SURPS scores: impulsivity (26.0%), sensation seeking (25.1%), hopelessness (22.4%), and anxiety sensitivity (26.6%). More male young people were allocated to the Preventure condition (85.5%) compared to control (33.0%). Both single sex and co-educational schools enrolled in the original cluster RCT and, by chance, random allocation resulted in a higher proportion of male students in schools in the intervention group compared to the control group. Aggression scores at each time point are reported in Table 1.

Attrition analysis

Table 1 provides the details on the participant retention rates across all time points (range 40.4–77.6%). Most young people in this analysis (83.8%) completed surveys on two or more follow-up occasions. Attrition analyses were run to determine whether there were significant differences between young people with missing data for two or more follow-up occasions, compared to those with no missing data. Young people with partial data were more likely to attend a school with a lower ICSEA (SES) ranking ($t(305) 2.134$, $p = 0.034$). There were no differences between individuals with less and more complete data on baseline aggression ($t(46.29) -1.407$, $p = 0.166$), gender ($t(337) 1.333$, $p = 0.183$), impulsivity ($t(73.87) -1.983$, $p = 0.062$), hopelessness ($t(78.53) -0.529$, $p = 0.599$), anxiety sensitivity ($t(70.96) -0.140$, $p = 0.889$), or sensation seeking ($t(77.61) 0.695$, $p = 0.489$).

Multilevel modeling outcomes

Results from the final multilevel models are reported in Table 2. Findings show that Preventure had a significant effect on aggression over the 7-year period. Young people randomized to Preventure demonstrated a greater rate of decline in total aggression compared the control condition (-0.60 units every 6 months *v.* -0.18 units every 6 months, respectively) from baseline to 7-year follow-up ($b = -0.42$, confidence interval [CI] -0.638 to -0.196 ; $p < 0.000$). This is approaching a large effect size for the impact of the intervention across the 7-year period ($d = -0.73$). Separate analyses of the two forms of aggression revealed that Preventure had a significant impact on both proactive and reactive aggression. Young people in the Preventure group had a greater rate of decline in reactive aggression compared to the control condition (-0.35 units *v.* -0.13 units every 6 months, respectively) from baseline to 7-year follow-up ($b = -0.22$, CI -0.349 to -0.098 ; $p = 0.000$), with a moderate effect size ($d = -0.66$). In addition, the rate of change in proactive aggression was

accelerated by receiving Preventure compared to control (-0.20 units *v.* -0.06 units every 6 months, respectively) from baseline to 7-year follow-up ($b = -0.14$, CI -0.229 to -0.051 ; $p = 0.002$). This equates to a moderate effect size for Preventure on proactive aggression ($d = -0.49$). All outcomes were consistent in direction with multiple imputation analysis, albeit with marginally smaller effect sizes (see the online Supplementary materials for more details).

The pattern of data in the original analysis was robust in analyses with square root transformed data and a Poisson regression analysis. To explore whether the between group differences might be accounted for by higher baseline RPQ scores in the Preventure group, we calculated mean change from baseline follow-up within each decile of baseline RPQ scores. This indicated that the pattern of reducing RPQ scores over time was not driven by participants with extreme RPQ scores at baseline, and rather we saw a consistent pattern of reducing RPQ aggression scores over time in most of the decile groups. We applied the Mee-Chua test (Ostermann et al., 2008) which indicated that the reduction in aggressions scores observed in the Preventure group is likely to reflect true change and not attributable to regression to the mean.

Discussion

This research suggests that a school-based personality-targeted prevention program may be effective in reducing aggression over the long term. The analysis found that students who received the Preventure program demonstrated larger reductions in aggression over the 7-year follow-up period, from adolescence to young adulthood. Overall, all young people in the study showed reductions in aggressive behaviors over time; however, young people who received the Preventure intervention demonstrated accelerated declines in aggressive behaviors compared to those who did not receive the intervention. However, interpretation of these findings is limited by an imbalance in sex ratios across the two groups. Due to school-level randomization (i.e. whole schools were randomized to either the Preventure or control group) and varying gender balance between the trial schools, there was a significantly higher proportion of male young people in the Preventure group relative to control (86% *v.* 33%). As adolescent males tend to report higher rates of aggression compared to females (Smart et al., 2003), this imbalance may explain higher average baseline aggression scores at baseline and the greater declines in aggression for Preventure relative to control. Replication of this study in different samples of young people with balanced sex ratios will support external validity of the findings.

To our knowledge, this is the first study to have demonstrated lasting impacts of a school-based program on aggression from age 13 into young adulthood. This study contributes to the literature showing support for school-based programs in the prevention of aggression, carrying implications for future interventions and research (Cox et al., 2016; Hahn et al., 2007; Kovalenko et al., 2022). These results are robust against the impact of missing data and build on previous research findings that show Preventure has a positive impact on conduct problems at 3-year follow-up among Australian adolescents (Newton et al., 2020) and among adolescents involved in bullying (Kelly et al., 2020).

The relatively large effect of Preventure on overall aggression ($d = -0.73$) is significant, as existing evidence for selective violence-prevention interventions is weak and there is limited evidence for school-based interventions in this area (Averdijk, Eisner, Luciano, Valdebenito, & Obsuth, 2020; Cox et al., 2016).

Table 1. Aggression scores (Reactive–Proactive Aggression Questionnaire) at each time point

Survey occasion	Time 1 Baseline	Time 2 6 months	Time 3 1 year	Time 4 2 years	Time 5 3 years	Time 6 5.5 years	Time 7 7 years
<i>N</i> (% retained)	339 (100%)	247 (72.9%)	263 (77.6%)	250 (73.7%)	231 (68.1%)	191 (43.7%)	137 (40.4%)
<i>Age (M, s.d.)</i>							
	13.03 (0.47)	13.58 (0.51)	14.01 (0.42)	14.98 (0.38)	15.96 (0.37)	19.01 (0.43)	20.00 (0.50)
<i>Total aggression (M, s.d.)</i>							
All	7.84 (6.94)	6.82 (7.40)	6.53 (7.36)	6.80 (7.67)	6.44 (8.06)	4.81 (4.71)	4.38 (5.03)
Control	6.23 (5.27)	6.03 (6.42)	5.45 (5.96)	5.72 (6.25)	5.60 (7.36)	4.91 (4.98)	4.06 (4.28)
Preventure	10.07 (8.25)	8.36 (8.82)	8.60 (9.16)	8.40 (9.17)	7.63 (8.85)	4.65 (4.23)	4.89 (6.03)
<i>Reactive aggression (M, s.d.)</i>							
All	7.29 (4.71)	5.80 (4.68)	5.84 (5.11)	5.96 (5.06)	5.44 (5.10)	4.41 (3.60)	4.22 (3.41)
Control	6.11 (3.99)	5.23 (4.05)	5.16 (4.44)	5.59 (4.68)	5.11 (4.79)	4.59 (3.64)	3.86 (3.02)
Preventure	9.11 (5.15)	6.93 (5.59)	7.33 (6.12)	6.60 (5.63)	6.04 (5.62)	4.10 (3.52)	4.85 (3.96)
<i>Proactive aggression (M, s.d.)</i>							
All	2.76 (4.02)	2.53 (4.17)	2.71 (4.57)	2.72 (4.47)	2.51 (4.92)	1.21 (2.11)	1.21 (3.04)
Control	1.73 (2.73)	1.93 (3.20)	1.90 (3.23)	2.20 (3.71)	1.90 (4.19)	1.27 (2.38)	0.96 (2.10)
Preventure	4.34 (5.06)	3.71 (5.44)	4.53 (6.33)	3.63 (5.45)	3.63 (5.90)	1.10 (1.50)	1.62 (4.19)

Table 2. Preventure v. control outcomes for aggression: coefficients, effect sizes, and CIs from multilevel modeling linear change in aggressive behavior from baseline to 7-year follow-up

	<i>b</i>	95% CI		<i>p</i>	Cohen's <i>d</i>
		Low	High		
<i>Total aggression</i>					
Time effect (control)	−0.18	−0.32	−0.05	0.009	−0.31
Time effect (Preventure)	−0.60	−0.77	−0.42	<0.001	−1.05
Group × time interaction	−0.42	−0.64	−0.20	<0.001	−0.73
<i>Reactive aggression</i>					
Time effect (control)	−0.13	−0.21	−0.05	0.001	−0.39
Time effect (Preventure)	−0.35	−0.45	−0.26	<0.001	−1.04
Group × time interaction	−0.22	−0.35	−0.10	<0.001	−0.66
<i>Proactive aggression</i>					
Time effect (control)	−0.06	−0.11	−0.00	0.041	−0.21
Time effect (Preventure)	−0.20	−0.27	−0.12	<0.001	−0.70
Group × time interaction	−0.14	−0.23	−0.05	0.002	−0.49

Notes: Cohen's *d* is the estimated effect size or standardized mean difference which was calculated based on the interaction between receiving Preventure v. control and time (baseline to 7 years). Schools = 9, young people with elevated risk (*N* = 339).

There was evidence of effectiveness for Preventure in reducing overall aggression, and both reactive and proactive aggression over time. There is overlap between reactive and proactive aggression subtypes; however, research suggests they are quite different in how they are preceded, associated, and driven (Hubbard et al., 2010). Preventure appeared to have a stronger impact on reactive aggression compared to proactive aggression which may be explained by additional overlap for reactive aggression in the shared psychopathology with other risk dimensions targeted by the program (e.g. emotional distress) (Fite et al., 2010).

The benefits of the Preventure program for reducing proactive aggression are particularly noteworthy given these youth tend to be difficult to engage in treatment and evidence on what works with this population is lacking (Caldwell & Van Rybroek, 2013). Proactive aggression is driven by a perception that aggressive behavior will lead to positive outcomes, so programs that target young people's reward systems may be more effective for these individuals because they respond less to costs and more to the benefits in perceived courses of action (Fite et al., 2014). It is possible that the Preventure focus on goal-setting and challenging cognitive distortions so as to increase the chances of achieving their goals was helpful for adolescents high in proactive aggression.

The effects of Preventure on aggression may be mediated (at least partially) by the effectiveness of Preventure on other risk factors, such as mental health (Newton et al., 2018), personality (Kelly et al., 2021), and harmful alcohol use (Newton et al., 2016). Symptoms of anxiety and depression are associated with reactive aggression among young people, and some young people drink alcohol to self-soothe or cope with distress related to their aggressive behavior which can lead to significant related and compounding consequences (Fite et al., 2010; Øverup, DiBello, Brunson, Acitelli, & Neighbors, 2015). In Preventure, young people are guided through relevant personality-specific situations where they discuss and challenge cognitive and behavioral tendencies typical of key personality traits. Gaining insight into their maladaptive coping strategies and learning how to consider

alternate thoughts and behaviors may lead to a reduced likelihood of reacting aggressively. It is beyond the scope of this study; however, future mediation analyses in larger samples would be beneficial to identify underlying mechanisms.

This study has some limitations to acknowledge. As discussed above, there was a significantly higher proportion of male young people in the Preventure intervention relative to control which limits the interpretability of these findings. The analysis models aim to account for this by modeling change from participant-specific starting points and controlling for gender as a covariate. Nevertheless, this potential bias should be considered when interpreting the results and future school-based trials should employ stratified randomization by school type (all male, all female, co-educational) to avoid any potential imbalance between groups. Given ethical restrictions precluded analysis of data for public schools, it would be important for this study to be replicated in schools with varying SESs. Future research should examine the mechanism through which Preventure is differentially effective for reactive and proactive aggression behavioral subtypes, and investigate potential underlying mechanisms such as reductions in hazardous alcohol use. Underreporting is a potential source of bias in all self-report studies. Lastly, the subsample analyzed was not powered to examine the effects of the intervention for each of the four personality traits on aggression. It would be worthwhile exploring which personality traits benefited most from Preventure in relation to aggression outcomes.

Notwithstanding these limitations, the inclusion of general aggression and subtypes of proactive and reactive aggression in young adulthood allows for a sensitive and developmentally appropriate exploration of the nature and severity of these risk behaviors in youth. The study is the first to assess the long-term impacts of a school-based brief intervention on aggression into adulthood and identify a prevention program that may effectively reduce aggression over a 7-year period. The analysis found that young people who received Preventure showed significantly greater reductions in total, reactive, and proactive aggression

from baseline to 7-year follow-up compared to control, providing support for school-based prevention of maladaptive aggression. The effects of Preventure in reducing proactive aggression is of particular interest, given the multiplex challenges and costs associated with adult antisocial behavior that can ensue when this risk is not addressed early.

Supplementary material. The supplementary material for this article can be found at <https://doi.org/10.1017/S0033291724000989>.

Acknowledgments. The authors acknowledge Julia Rosenfeld, Natasha Nair, and Lucie Swaffield for research assistance in the original CAP trial as well as the schools, students, and teachers who participated in this research. The research team also acknowledges the assistance of the NSW Department of Education and Communities for access to its schools (SERAP 2011201). Trial registration: This trial was prospectively registered in the Australian New Zealand Clinical Trials Registry (ACTRN12612000026820) on January 6th, 2012.

Funding statement. The study was funded through a project grant from the Australian National Health and Medical Research Council (NHMRC; App1124958), and an NHMRC Centre of Research Excellence grant (PREMISE; GNT1134909). A/Prof. Barrett has received support from an NHMRC Emerging Leadership Fellowship (GNT1195852). Prof. Teesson has received support from an NHMRC Principal Research Fellowship (GNT1041756; GNT1078407). Dr Champion has received support from an NHMRC Early Career Fellowship (GNT1120641). Prof. Newton has received support from an NHMRC Career Development Fellowship (APP1166377). A/Prof. Stapinski has received support from an NHMRC Translating Research into Practice Fellowship (GNT1132853). The NHMRC played no role in the study design, data collection, extraction, interpretation, or writing of this manuscript.

Competing interests. Dr Conrod reported ownership of the Preventure trademark, being the original developer of the Preventure program, and licensing the program to community organizations, which are offered on a fee for service basis by her research and knowledge dissemination team. All other authors declare no competing interests.

Ethical standards. Ethical approval was granted by the University of New South Wales Human Research Ethics Committee (HREC 2018/845), the University of Sydney (2018/845), the Sydney Catholic Education Office (Ref: 772), and the New South Wales Department of Education and Training (SERAP 2011201). The trial is registered with the Australian New Zealand Clinical Trials Registry (ACTRN12612000026820).

References

- Australian Curriculum, Assessment and Reporting Authority. (2020). *Guide to understanding the Index of Community Socio-educational Advantage (ICSEA)*. Sydney: ACARA. Retrieved from <https://myschool.edu.au/media/1820/guide-to-understanding-icsea-values.pdf>
- Averdijk, M., Eisner, M., Luciano, E., Valdebenito, S., & Obsuth, I. (2020). *Effective violence prevention: An overview of the international evidence*. Cambridge, England: University of Cambridge, Institute of Criminology Violence Research Centre.
- Bobadilla, L., Wampler, M., & Taylor, J. (2012). Proactive and reactive aggression are associated with different physiological and personality profiles. *Journal of Social and Clinical Psychology, 31*(5), 458–487. <https://doi.org/10.1521/jscp.2012.31.5.458>
- Caldwell, M., & Van Rybroek, G. (2013). Effective treatment programs for violent adolescents: Programmatic challenges and promising features. *Aggression and Violent Behavior, 18*(5), 571–578. <https://doi.org/10.1016/j.avb.2013.06.004>
- Card, N., & Little, T. (2006). Proactive and reactive aggression in childhood and adolescence: A meta-analysis of differential relations with psychosocial adjustment. *International Journal of Behavioral Development, 30*(5), 466–480. <https://doi.org/10.1177/0165025406071904>
- Castellanos-Ryan, N., & Conrod, P. (2006). Brief interventions targeting personality risk factors for adolescent substance misuse reduce depression, panic and risk-taking behaviours. *Journal of Mental Health, 15*(6), 645–658. <https://doi.org/10.1080/09638230600998912>
- Castellanos-Ryan, N., & Conrod, P. (2011). Personality correlates of the common and unique variance across conduct disorder and substance misuse symptoms in adolescence. *Journal of Abnormal Child Psychology, 39*(4), 563–557. <https://doi.org/10.1007/s10802-010-9481-3>
- Castillo-Eito, L., Armitage, C. J., Norman, P., Day, M. R., Dogru, O. C., & Rowe, R. (2020). How can adolescent aggression be reduced? A multi-level meta-analysis. *Clinical Psychology Review, 78*, 101853. <https://doi.org/10.1016/j.cpr.2020.101853>
- Connor, D. F., Chartier, K. G., Preen, E. C., & Kaplan, R. F. (2010). Impulsive aggression in attention-deficit/hyperactivity disorder: Symptom severity, co-morbidity, and attention-deficit/hyperactivity disorder subtype. *Journal of Child and Adolescent Psychopharmacology, 20*(2), 119–126. <https://doi.org/10.1089/cap.2009.0076>
- Conrod, P., O'Leary-Barrett, M., Newton, N., Topper, L., Castellanos-Ryan, N., Mackie, C., & Girard, A. (2013). Effectiveness of a selective, personality-targeted prevention program for adolescent alcohol use and misuse: A cluster randomized controlled trial. *JAMA Psychiatry, 70*(3), 334–342. <https://doi.org/10.1001/jamapsychiatry.2013.651>
- Conrod, P., Stewart, S., Comeau, N., & Maclean, M. (2006). Efficacy of cognitive-behavioral interventions targeting personality risk factors for youth alcohol misuse. *Journal of Clinical Child and Adolescent Psychology, 35*(4), 550–563. https://doi.org/10.1207/s15374424jccp3504_6
- Cox, E., Leung, R., Baksheev, G., Day, A., Toumbourou, J., Miller, ... Walker, A. (2016). Violence prevention and intervention programmes for adolescents in Australia: A systematic review. *Australian Psychologist, 51*(3), 206–222. <https://doi.org/10.1111/ap.12168>
- Feingold, A. (2013). A regression framework for effect size assessments in longitudinal modeling of group differences. *Review of General Psychology, 17*(1), 111–112. <https://doi.org/10.1037/a0030004>
- Fite, P., Hendrickson, M. L., Evans, S., Rubens, S. L., Johnson-Motoyama, M., & Savage, J. (2014). Associations between proactive and reactive subtypes of aggression and lifetime substance use in a sample of predominantly Hispanic adolescents. *Journal of Child & Adolescent Substance Abuse, 23*(6), 398–406. <https://doi.org/10.1080/1067828X.2012.748440>
- Fite, P., Raine, A., Stouthamer-Loeber, M., Loeber, R., & Pardini, D. (2010). Reactive and proactive aggression in adolescent males examining differential outcomes 10 years later in early adulthood. *Criminal Justice and Behavior, 37*(2), 141–157. <https://doi.org/10.1177/00938548093530>
- Friedman, A., Taraban, L., Sitnick, S., & Shaw, D. S. (2021). Early adolescent predictors of violent behavior: Child and contextual risk, and moderation by rejecting parenting. *The Journal of Early Adolescence, 41*(8), 1228–1254. <https://doi.org/10.1177/02724316211002268>
- Fung, A., Raine, A., & Gao, Y. (2009). Cross-cultural generalizability of the reactive-proactive aggression questionnaire (RPQ). *Journal of Personality Assessment, 91*(5), 473–479. <https://doi.org/10.1080/00223890903088420>
- Gueorguieva, R., & Krystal, J. H. (2004). Move over ANOVA: Progress in analyzing repeated-measures data and its reflection in papers published in the archives of general psychiatry. *Archives of General Psychiatry, 61*(3), 310–317. <https://doi.org/10.1001/archpsyc.61.3.310>
- Hahn, R., Fuqua-Whitley, D., Wethington, H., Lowy, J., Crosby, A., Fullilove, ... Price, L. (2007). Effectiveness of universal school-based programs to prevent violent and aggressive behavior: A systematic review. *American Journal of Preventive Medicine, 33*(2), S114–S129. <https://doi.org/10.1016/j.amepre.2007.04.012>
- Henriksen, M., Skrove, M., Hoftun, G., Sund, E. R., Lydersen, S., Tseng, W., & Sukhodolsky, D. (2021). Developmental course and risk factors of physical aggression in late adolescence. *Child Psychiatry and Human Development, 52*, 628–639. <https://doi.org/10.1007/s10578-020-01049-7>
- Hubbard, J., McAuliffe, M., Morrow, M., & Romano, L. (2010). Reactive and proactive aggression in childhood and adolescence: Precursors, outcomes, processes, experiences, and measurement. *Journal of Personality, 78*(1), 95–118. <https://doi.org/10.1111/j.1467-6494.2009.00610.x>
- Huesmann, L. R., Eron, L. D., & Dubow, E. F. (2002). Childhood predictors of adult criminality: Are all risk factors reflected in childhood aggressiveness?.

- Criminal Behaviour and Mental Health*, 12(3), 185–208. <https://doi.org/10.1002/cbm.496>
- Kelly, E., Grummitt, L., Birrell, L., Stapinski, L., Barrett, E., Boyle, J., ... Newton, N. (2021). The school-led Preventure study: Protocol of a cluster-randomised controlled trial of effectiveness to prevent adolescent alcohol misuse, internalising problems, and externalising problems through a personality-targeted intervention delivered by school staff. *Preventive Medicine Reports*, 21, p. 101286. <https://doi.org/10.1016/j.pmedr.2020.101286>
- Kelly, E., Newton, N., Stapinski, L., Conrod, P., Barrett, E., Champion, K., & Teesson, M. (2020). A novel approach to tackling bullying in schools: Personality-targeted intervention for adolescent victims and bullies in Australia. *Journal of the American Academy of Child & Adolescent Psychiatry*, 59(4), 508–518. <https://doi.org/10.1016/j.jaac.2019.04.010>
- Kovalenko, A., Abraham, C., Graham-Rowe, E., Levine, M., & O'Dwyer, S. (2022). What works in violence prevention among young people?: A systematic review of reviews. *Trauma, Violence, & Abuse*, 23(5), 1388–1404. <https://doi.org/10.1177/1524838020939130>
- Marcus, R. (2007). Personality risk factors for aggression and violence. In R. F. Marcus (Ed.), *Aggression and violence in adolescence* (pp. 55–79). Cambridge, UK: Cambridge University Press. <https://doi.org/10.1017/CBO9780511611292>
- Matjasko, J., Vivolo-Kantor, A., Masseti, G., Holland, K., Holt, M., & Cruz, J. (2012). A systematic meta-review of evaluations of youth violence prevention programs: Common and divergent findings from 25 years of meta-analyses and systematic reviews. *Aggression and Violent Behavior*, 17(6), 540–552. <https://doi.org/10.1016/j.avb.2012.06.006>
- Mewton, L., Lees, B., Squeglia, L., Forbes, M., Sunderland, M., Krueger, ... Teesson, M. (2020). The relationship between brain structure and general psychopathology in preadolescents. *Journal of Child Psychology and Psychiatry*, 63(7), 734–744. <https://doi.org/10.1111/jcpp.13513>
- Moffitt, T., Caspi, A., Harrington, H., & Milne, B. (2002). Males on the lifecourse-persistent and adolescence-limited antisocial pathways: Follow-up at age 26 years. *Development and Psychopathology*, 14(1), 179–207. <https://doi.org/10.1017/S0954579402001104>
- Nagin, D. S., & Tremblay, R. E. (1999). Trajectories of boys' physical aggression, opposition, and hyperactivity on the path to physically violent and nonviolent juvenile delinquency. *Child Development*, 70(5), 1181–1196. <https://doi.org/10.1111/1467-8624.00086>
- Newton, N., Conrod, P., Slade, T., Carragher, N., Champion, K., Barrett, E., ... Teesson, M. (2016). The long-term effectiveness of a selective, personality-targeted prevention program in reducing alcohol use and related harms: References cluster randomized controlled trial. *Journal of Child Psychology and Psychiatry*, 57(9), 1056–1065. <https://doi.org/10.1111/jcpp.12558>
- Newton, N., Stapinski, L., Slade, T., Champion, K., Barrett, E., Chapman, & ... Castellanos-Ryan, N. (2018). Pathways to prevention: Protocol for the CAP (Climate and Preventure) study to evaluate the long-term effectiveness of school-based universal, selective and combined alcohol misuse prevention into early adulthood. *BMC Public Health*, 18(1), 643. <https://doi.org/10.1186/s12889-018-5554-y>
- Newton, N., Stapinski, L., Slade, T., Sunderland, M., Barrett, E., Champion, K., ... Debenham, J. (2022). The 7-year effectiveness of school-based alcohol use prevention from adolescence to early adulthood: A randomized controlled trial of universal, selective, and combined interventions. *Journal of the American Academy of Child & Adolescent Psychiatry*, 61(4), 520–532. <https://doi.org/10.1016/j.jaac.2021.10.023>
- Newton, N., Teesson, M., Barrett, E., Slade, T., & Conrod, P. (2012). The CAP study, evaluation of integrated universal and selective prevention strategies for youth alcohol misuse: Study protocol of a cluster randomized controlled trial. *BMC Psychiatry*, 12(1), 118. <https://doi.org/10.1186/1471-244X-12-118>
- Newton, N. C., Stapinski, L., Teesson, M., Slade, T., Champion, K. E., Barrett, E. L., ... Conrod, P. J. (2020). Evaluating the differential effectiveness of social influence and personality-targeted alcohol prevention on mental health outcomes among high-risk youth: A novel cluster randomised controlled factorial design trial. *Australian & New Zealand Journal of Psychiatry*, 54(3), 259–271.
- Ostermann, T., Willich, S. N., & Lütke, R. (2008). Regression toward the mean – A detection method for unknown population mean based on Mee and Chua's algorithm. *BMC Medical Research Methodology*, 8, 52. <https://doi.org/10.1186/1471-2288-8-52>
- Øverup, C., DiBello, A., Brunson, J., Acitelli, L., & Neighbors, C. (2015). Drowning the pain: Intimate partner violence and drinking to cope prospectively predict problem drinking. *Addictive Behaviors*, 41, 152–161. <https://doi.org/10.1016/j.addbeh.2014.10.006>
- Patalay, P., & Gage, S. (2019). Changes in millennial adolescent mental health and health related behaviours over 10 years: A population cohort comparison study. *International Journal of Epidemiology*, 48(5), 1650–1664. <https://doi.org/10.1093/ije/dyz006>
- Pérez Fuentes, M., Molero Jurado, M., Carrión Martínez, J., Mercader Rubio, I., & Gázquez, J. (2016). Sensation-seeking and impulsivity as predictors of reactive and proactive aggression in adolescents. *Frontiers in Psychology*, 7, 1447. <https://doi.org/10.3389/fpsyg.2016.01447>
- Raine, A., Dodge, K., Loeber, R., Gatzke-Kopp, L., Lynam, D. R., Reynolds, C., ... Liu, J. (2006). The Reactive-Proactive Aggression Questionnaire: Differential correlates of reactive and proactive aggression in adolescent boys. *Aggressive Behavior*, 32(2), 159–171. <https://doi.org/10.1002/ab.20115>
- Singer, J., & Willett, J. (2003). Doing data analysis with the multilevel model for change. In J. Singer & J. Willett (Eds.), *Applied longitudinal data analysis: Modeling change and event occurrence* (pp. 96–97). New York: Oxford University Press. <https://doi.org/10.1093/acprof:oso/9780195152968.001.0001>
- Smart, D., Vassallo, S., Sanson, A., Richardson, N., Dussuyer, I., McKendry, B., ... Oberklaid, F. (2003). *Patterns and precursors of adolescent antisocial behaviour: Types, resiliency and environmental influences (Second report)*. Melbourne, Australia: Crime Prevention Victoria.
- StataCorp. (2019). *Stata statistical software*. College Station, TX: StataCorp LLC.
- Teesson, M., Newton, N., & Barrett, E. (2012). Australian school-based prevention programs for alcohol and other drugs: A systematic review. *Drug and Alcohol Review*, 31(6), 731–736. <https://doi.org/10.1111/j.1465-3362.2012.00420.x>
- Teesson, M., Newton, N., Slade, T., Carragher, N., Barrett, E., Champion, K., & ... Conrod, P. (2017). Combined universal and selective prevention for adolescent alcohol use: A cluster randomized controlled trial. *Psychological Medicine*, 47(10), 1761–1770. <https://doi.org/10.1017/S0033291717000198>
- Tremblay, R., Nagin, D., Séguin, J., Zoccolillo, M., Zelazo, P., Boivin, & ... Japel, C. (2004). Physical aggression during early childhood: Trajectories and predictors. *Pediatrics*, 114(1), e43–e50. <https://doi.org/10.1542/peds.114.1.e43>
- Woicik, P., Stewart, S., Pihl, R., & Conrod, P. (2009). The substance use risk profile scale: A scale measuring traits linked to reinforcement-specific substance use profiles. *Addictive Behaviors*, 34(12), 1042–1055. <https://doi.org/10.1016/j.addbeh.2009.07.001>