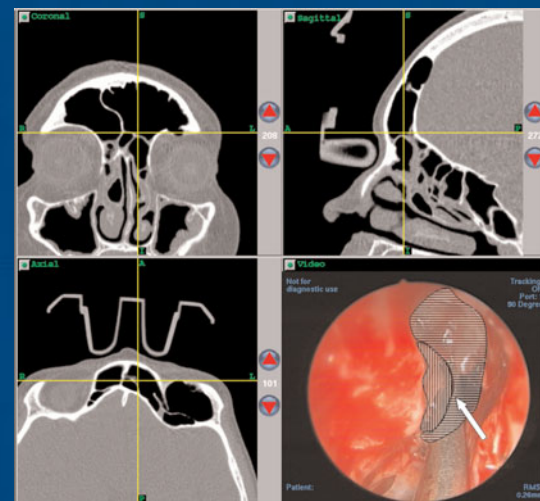


ISSN 0022-2151
September
2009

The Journal of
**Laryngology
& Otology**

Founded in 1887
by Morell Mackenzie & Norris Wolfenden



features:

Management of the narrow nose

Bleeding around a tracheostomy
wound

The influence of myringosclerosis
on myringoplasty results

Management of paediatric
rhabdomyosarcoma

Cyclin E mRNA in nasopharyngeal
carcinoma

Frontal recess cells as a cause
of pneumocoele

V o l

1 2 3

No 9



UCL

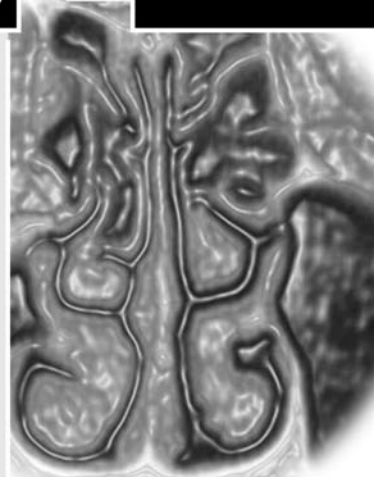
Endoscopic Approach to Rhinosinusitis:

7th - 10th October 2009

The course covers all aspects of rhinosinusitis, advanced approaches to the frontal sinus, extended endoscopic surgery of the skull base and orbit and the use of computer assisted surgery.

Fee: **£799** - including dissection (*limited spaces*)
 £459 - without dissection

ERS members entitled to 10% discount



Foundations of Otologic Surgery:

9th - 10th November 2009

A new course aimed at those who are looking to develop the skills required for otologic surgery.

Fee: **£495**

Book now
for only:

£395

available until
Sept. 8th



Management of Snoring and Obstructive Sleep Apnoea:

11th November 2009

A one day meeting to discuss medical assessment and management, with the latest developments in surgical treatment.

Fee: **£315**



A Practical Approach to Airway Management:

27th November 2009

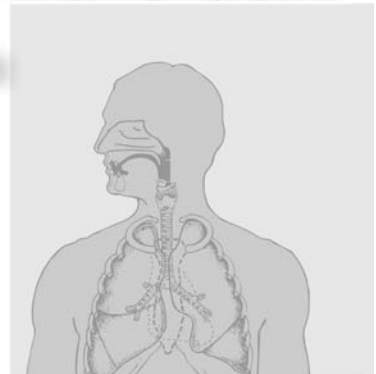
Practical aspects of adult and paediatric airway management. A course in anaesthetic and surgical techniques for securing an airway.

Fee: **£395**

Book now
for only:

£365

available until
Sept. 1st



Visit:

www.ucl.ac.uk/ear/training

Contact:

+44 (0)20 7679 8909 / 64

The Journal of
Laryngology & Otology

Founded in 1887 by Morell Mackenzie and Norris Wolfenden

Editors

Guy Kenyon (London)
Robin Youngs (Gloucester)

Emeritus Editor

Neil Weir (Guildford)

Book Review and Senior Assistant Editor

Liam Flood (Middlesbrough)

Assistant Editors

Martin Bailey (London)
Jon Bennett (London)
Abir Bhattacharyya (London)
Brian Bingham (Glasgow)
Patrick Bradley (Nottingham)
Alfio Ferlito (Udine)
Edward Fisher (Birmingham)
S S Musheer Hussain (Dundee)
Richard Irving (Birmingham)
Andrew Jones (Liverpool)
Nick Jones (Nottingham)
Bhik Kotecha (London)
Valerie Lund (London)
Robert Mills (Edinburgh)
Desmond Nunez (Bristol)
Andrew Prichard (Shrewsbury)
David Proops (Birmingham)

Alessandra Rinaldo (Udine)
Peter Robb (Epsom)
Mark Samaha (Quebec)
Nick Stafford (Hull)
Iain Swan (Glasgow)
John Watkinson (Birmingham)
Richard Wight (Middlesbrough)
Tim Woolford (Manchester)
Matthew Yung (Ipswich)

Advisers in Audiology

Doris-Eva Bamiou (London)
Linda Luxon (London)

Advisers in Pathology

Simon Rose (Bath)
Ketan Shah (Oxford)
Lesley Ann Smallman (Gloucester)
Adrian Warfield (Birmingham)

Adviser in Radiology

Tim Beale (London)

Adviser in Statistics

Linda Hunt (Bristol)

Website Editor

Nitesh Patel (London)

Managing Editor

Rosamund Greensted

Editorial Office: Maybank, Quickley Rise, Chorleywood, Herts WD3 5PE, UK.
Tel/fax: +44 (0)1923 283561. Email: j.l.o@btconnect.com. Website: <http://www.jlo.co.uk>

The Journal of Laryngology & Otology (ISSN 0022-2151) is published monthly in both print and electronic form and distributed on behalf of the proprietors, JLO (1984) Ltd, by Cambridge University Press
Registered Charity No 293063

SUBSCRIPTIONS, LICENSING, ADVERTISING AND REPRINTS

The Journal of Laryngology & Otology (ISSN 0022-2151) is published monthly in both print and electronic form and distributed on behalf of the proprietors, JLO (1984) Ltd, by Cambridge University Press.

Subscriptions: Volume 123, 2009 (Monthly)

Both Standard and Online-only subscription prices entitle subscribers to access all of the archival online content, which dates back to Volume 114 (2000). For further details please go to Cambridge University Press.

Institutions print and electronic: £358/\$716. Institutions electronic only: £320/\$640. Individuals print plus electronic: £190/\$380. Member rates available – please enquire. Special rates available for Trainees. Print ISSN 0022-2151. Electronic ISSN 1748-5460

Orders are regarded as firm, and payments are not refundable. All orders and enquiries, including online licensing and consortia enquiries, should be sent to: Journals Subscription Department, Cambridge University Press.

*Periodicals postage paid at Rahway, NJ. US Postmaster: send address changes to *The Journal of Laryngology & Otology*, c/o Mercury Airfreight International Ltd, 365 Blair Road, Avenel, NJ 07001, USA.

Advertising sales

Contact: Rebecca Curtis, Journals, Cambridge University Press.

Tel: +44 (0)1223 325757

Fax: +44 (0)1223 325801

E-mail: ad_sales@cambridge.org

Other business correspondence

All other business correspondence, should be sent to: Daniel Edwards dedwards@cambridge.org Journals Department, Cambridge University Press. Enquiries about reprints should be sent to Rebecca Curtis: special_sales@cambridge.org

© 2009 JLO (1984) Limited

Apart from any fair dealing for the purposes of research or private study, or criticism or review, as permitted under the UK Copyright, Designs and Patents Act, 1988, no part of this publication may be reproduced, stored, or transmitted, in any form or by any means, without the prior permission in writing of the Editors, or in the case of reprographic reproduction in accordance with the terms of licences issued by the Copyright Licensing Agency in the UK, or in accordance with the terms of licences issued by the appropriate Reproduction Rights Organization outside the UK. Enquiries concerning reproduction outside the terms stated here should be sent to the publishers at the above address. Contributors and advertisers are responsible for the scientific content and the views expressed, which are not necessarily those of the Editors or of Cambridge University Press.

Typeset by Techset and printed in Great Britain by Latimer Trends

SUMMARY GUIDANCE FOR AUTHORS

The Journal of Laryngology & Otology (JLO) is a peer-reviewed publication, and is indexed/abstracted in most major databases including Index Medicus, MEDLINE/PubMed, Science Citation Index, Current Contents and EMBASE.

Only a very brief summary of the submission requirements is presented here: when preparing their manuscripts, authors must consult and comply with the full Instructions for Authors on the *JLO* website at <http://www.jlo.co.uk/docs/submittingarticles.htm>

Adherence to these will speed up the editorial process.

All contributions are considered for publication on the understanding that they have been submitted solely to the *JLO* and that they have not previously been published. Contributions in the following categories will be considered: Main Articles (reporting clinical research or audit), Review Articles, Historical Articles, Short Communications (including 'How I do it'), Clinical Records (case reports), Radiology/Pathology/Oncology in Focus, and Letters to the Editors.

Submission

All contributions must be accompanied by a covering letter, which must be signed by **all** authors. Manuscripts should be submitted to the Editors:

- either **online** via www.jlo.co.uk
- or **by post** to the Editorial Office, *The Journal of Laryngology & Otology*, Maybank, Quickley Rise, Chorleywood, Hertfordshire WD3 5PE, UK (Tel/Fax: +44 (0)1923 283561; E-mail j.l.o@btconnect.com). Three copies should be submitted, one on floppy disk or CD-ROM (including separate TIFF files of any figures) and two printed on paper (together with two sets of figures).

The text of the manuscript (incorporating all tables and the figures legends, but **not** the figures themselves) must be saved as a Microsoft Word document or an RTF file (i.e. 'rich text format'). Use double-spaced, unjustified text throughout. The title page must contain the full title of the paper; the names and qualifications of all authors; the departments(s) and institution(s) where the work was carried out; and the name, postal and e-mail address, and telephone and fax numbers of the author responsible for all communications about the manuscript and proofs. An Abstract (maximum 150 words) and Key words must be provided for all contributions (except Letters).

References should be identified in the text by superscript Arabic numerals and listed at the end of the manuscript in the order in which they are first cited in the text. The tables feature of the word processor should be used to prepare Tables, and both these and the list of Figure legends should appear on separate pages at the end of the manuscript. All Figures must be saved as separate TIFF files at a resolution of 600 dpi.

The authors of all material accepted for publication will be required to assign copyright to JLO (1984) Ltd; a form for this purpose and for ordering offprints will accompany the proofs. The proofs will be sent by e-mail to the corresponding author as a PDF file, and should be corrected and returned within three working days.