

# Primary hyperparathyroidism and psychiatry: manifestations, causes and management

Sukhmeet Singh , Victoria Stokes , Al Hakam El Kaubaisy & Judy S. Rubinsztein 

## ARTICLE

### SUMMARY

Primary hyperparathyroidism (PHPT) is the presence of hypercalcaemia with an elevated or inappropriately normal parathyroid hormone level. In clinical psychiatry this is often detected on routine blood investigations. This article aims to help mental health professionals understand the relevance of PHPT to psychiatry and offers some guidance about further management of patients presenting with this endocrine abnormality in mental health settings. PHPT can be associated with both mental and physical health problems in some individuals, making it a crucial diagnosis that should not be overlooked.

### LEARNING OBJECTIVES

After reading this article you will be able to:

- understand primary hyperparathyroidism (PHPT), including its causes, signs and symptoms
- understand the relationship between PHPT and psychiatric illness
- know when to refer and how to support management of a patient with PHPT within mental health settings.

### KEYWORDS

Liaison psychiatry; old age psychiatry; neuropsychiatry; depressive disorders; dementias/neurodegenerative diseases.

### Prevalence and aetiology of primary hyperparathyroidism

Primary hyperparathyroidism (PHPT) is a relatively common disorder, with an estimated overall prevalence of 0.84–0.86% (Soto-Pedre 2023). It is the most common cause of persistent hypercalcaemia (Bilezikian 2018) and the third most common endocrine condition after diabetes and thyroid disease (Madkhali 2016), although it tends to be underdiagnosed. Although PHPT can occur across all ages, it usually manifests in later life, with a mean age at diagnosis of 65 (Soto-Pedre 2023). It affects women three to four times more often than men (Bilezikian 2018). As awareness of the need to test for PHPT increases, so too will the numbers of people receiving mental health treatment who have PHPT. This underscores the importance of improving psychiatrists' knowledge of this important topic.

There are two pairs of parathyroid glands, each about the size of a grain of rice, located adjacent to the two thyroid gland lobes in the neck, although the anatomy can be highly variable. In healthy individuals, the glands sense serum calcium levels and act to prevent them from falling too low. They do this by releasing parathyroid hormone, which increases calcium by increasing the action of osteoclasts in bone, increasing renal reabsorption of calcium in the distal convoluted tubule and collecting duct, as well as activating vitamin D to promote calcium absorption in the gut. In PHPT there is a failure of this Mechanism and the secretion of parathyroid hormone becomes dysregulated, resulting in hypercalcaemia. This is most commonly due to the development of a single parathyroid adenoma (about 80% of cases), but may also result from gland hyperplasia (about 15%), multiple adenomas (about 5%) or, rarely, parathyroid carcinoma (less than 1%) (Walker 2018).

PHPT is usually sporadic, but it may be inherited as part of a genetic condition that may be syndromic (i.e. associated with other features) or non-syndromic. Patients with genetic forms of PHPT may present differently and require different management, which is beyond the scope of this article.

**Sukhmeet Singh** is a Year 7 Specialty Trainee (ST7) in child and adolescent psychiatry and the psychiatry of intellectual disability with NHS Lanarkshire, at Kirklands Hospital, Bothwell, UK, and a clinical lecturer in the psychiatry of intellectual disability in the School of Health & Wellbeing, University of Glasgow, UK. His research and clinical interests are in the fields of intellectual disabilities and child and adolescent mental health. He has an interest in the physical health needs of children with intellectual disabilities.

**Victoria Stokes** is a consultant endocrinologist with Cambridge University Hospitals NHS Foundation Trust, based at Addenbrooke's Hospital, Cambridge, UK, where she has a special interest in parathyroid, calcium and bone disorders and neuroendocrine tumours.

**Al Hakam El Kaubaisy** studied medicine at King's College London. He completed his foundation training at Addenbrooke's and Ipswich Hospitals, and currently works as a Foundation Year (FY) locum senior house officer with Cambridgeshire and Peterborough NHS Foundation Trust, at Fulbourn Hospital, Fulbourn, UK. **Judy S. Rubinsztein** is an old age psychiatrist with Cambridgeshire and Peterborough NHS Foundation Trust, working across Fulbourn Hospital, Fulbourn, UK. She is also an affiliated assistant professor in the Department of Psychiatry, University of Cambridge, UK. She has research interests in affective disorders and cognitive issues in bipolar disorder.

**Correspondence** Sukhmeet Singh. Email: [singhsu@nhs.scot](mailto:singhsu@nhs.scot)

First received 6 Jul 2024

Final revision 1 Dec 2024

Accepted 16 Dec 2024

### Copyright and usage

© The Author(s), 2025. Published by Cambridge University Press on behalf of Royal College of Psychiatrists. This is an Open Access article, distributed under the terms of the Creative Commons Attribution licence (<http://creativecommons.org/licenses/by/4.0/>), which permits unrestricted re-use, distribution and reproduction, provided the original article is properly cited.

This article reviews the psychiatric manifestations, causes and management of primary hyperparathyroidism (PHPT), focusing on the key areas outlined in the learning objectives above. The article is based on our systematic review of the literature (Box 1) and our focus in this narrative review is on depression and dementia, and their potential relation to PHPT, as these areas have the most available data. We did not explore PHPT and psychosis, as literature in this area is limited to case reports. Our review was prompted by the presentation of several patients with PHPT or lithium-associated hyperparathyroidism (LAH) in our practice and it aims to update clinicians on PHPT.

### BOX 1 The literature search

We searched Google Scholar, PubMed, MEDLINE and PsycINFO using the major terms 'depression', 'anxiety', 'delirium', 'cognitive impairment' and 'dementia', in conjunction with 'primary hyperparathyroidism' (PHPT).

The search spanned from 1 January 2014 to 12 February 2024 and included only English-language papers, excluding case reports or case series of few or single cases. We also referenced some older literature, published before 2014, where relevant. Forty-two full-text articles were reviewed.

Lithium-associated hyperparathyroidism (LAH) is clinically indistinguishable from PHPT. While the exact mechanisms of LAH remain unclear, hypothetical mechanisms are discussed in greater detail below.

### Symptoms

Advances in testing methods have led to the identification of many asymptomatic cases of hyperparathyroidism. Most biochemical diagnoses are made incidentally following a routine blood test. The classic textbook description of PHPT symptoms, often summarised by the mnemonic 'bones, stones, groans and psychic moans', is rarely relevant in the Western world today, although it remains a useful way to remember the core symptoms. Hypercalcaemia may produce a range of symptoms, including anorexia, nausea, vomiting, thirst, polyuria, constipation, fatigue and hypotonicity. Gastrointestinal issues such as dyspepsia and peptic ulcers may also occur ('groans'). Psychiatric symptoms may occur, such as depression, anxiety and confusion ('psychic moans'). Additionally, increased calcium absorption from bones results in reduced bone density and increased fracture risk, which may lead to fragility fractures. Despite increased calcium reabsorption in the kidney, most patients will still have hypercalciuria, which can lead to nephrocalcinosis and renal stones.

#### *Psychiatric manifestations ('psychic moans')*

Serdenes et al (2021) reviewed the literature on neuropsychiatric features of primary hyperparathyroidism, covering reports of symptoms such as depression, anxiety, mania, psychosis, delirium, catatonia, but excluding dementia or mild cognitive impairment in 76 papers (including case studies). They noted that many of the papers reviewed were over 10 years old and were limited by small sample sizes and the poorly defined methodologies employed. They report on mechanisms inducing these symptoms. The direct impacts of both parathyroid hormone and hypercalcaemia in the brain

may explain the breadth of neuropsychiatric manifestations of PHPT. Hypercalcaemia and parathyroid hormone can affect monoamine transmission through the following mediators: tyrosine hydroxylase, interleukin-6 (IL-6), monoamine oxidase (MAO), calcium and sodium-potassium adenosine triphosphatase transporter (Na/K-ATPase). The interested reader should refer to this review for further discussion on possible mechanisms. The authors concluded that the most effective treatment for neuropsychiatric symptoms is parathyroidectomy.

Our own literature review found that in studies of patients undergoing parathyroidectomy for PHPT, 43–53% of individuals report suffering from anxiety, 37–47% report impaired cognition and 32–62% report depression (Parks 2017). PHPT can be associated with a range of severe mental health or non-specific symptoms, including depressive symptoms, anxiety, fatigue and forgetfulness. These non-specific complaints are difficult to recognise but can be captured by quality of life measures, with some studies showing improvements in quality of life after surgery. A detailed discussion of post-operative quality of life is beyond the scope of this article but is well covered in a recent narrative review (Carsote 2023) and Cochrane review (Pappachan 2023) demonstrating inconclusive results. The available evidence is limited, owing to the use of numerous different instruments (Carsote 2023), as well as differences between studies regarding the domains of quality of life that improve post-operatively (Pappachan 2023).

A retrospective cohort study investigating the prevalence and sequelae of delays to diagnosis of PHPT in people over the age of 40 found that those whose diagnostic workups or time from diagnosis to treatment exceeded 1 year had higher rates of major depressive disorder, anxiety disorder and reported fatigue and malaise (Lorenz 2022). Some authors therefore encourage psychiatrists to approach PHPT as a predominantly asymptomatic condition and to have a low threshold for testing of calcium levels, especially in elderly patients (Bilezikian 2018). Patients often report psychiatric manifestations such as depression, anxiety and cognitive issues and the extent to which these symptoms relate to parathyroid disease remains controversial, as discussed in detail below.

### Depression

Depression is the most prevalent affective disorder among people with PHPT. Nevertheless, the relationship between depressive symptoms and PHPT remains unclear, given the high prevalence of depression in the general population. Many earlier studies were confounded by a lack of control

groups, small sample sizes or other methodological issues, leading to conflicting results. A helpful and more modern approach is to examine whether depressive symptoms or a fully defined depressive disorder resolve after parathyroid surgery compared not only with general population controls but also with groups undergoing thyroid surgery (usually for benign thyroid nodules). More recent studies have used the Patient Health Questionnaire-9 (PHQ-9) as a proxy to examine whether a depressive disorder, rather than solely depressive symptoms, resolves post-surgery. Kroenke et al (2001) demonstrated that a PHQ-9 score  $\geq 10$  had a sensitivity of 88% and a specificity of 88% for major depression. Although some studies using self-rated scales have reached similar conclusions to those using the PHQ-9, these scales make it harder to infer a depressive syndrome and some have been shown to be insufficient (Kunert 2020) so we have not included studies using self-rated scales in our discussion.

Several studies pre-dating our literature search supported the idea that depression improved post-surgery. In their seminal study, Joborn et al (1988) found that 18% of 441 patients with primary hyperparathyroidism experienced pre-surgery depression and anxiety and that symptoms did not relate to the degree of hypercalcaemia. These symptoms, as well as low monoamine metabolites (5-hydroxyindoleacetic acid (5-HIAA) and homovanillic acid (HVA)) in the cerebrospinal fluid improved post-surgery. Wilhelm et al (2004) noted in their study ( $n = 360$ ) that 10% of the patients met DSM-IV-TR criteria for major depression pre-operatively. Post-operatively, 90% of these patients said that depression no longer impaired their ability to work or to perform activities of daily living. Furthermore, 27% were able to discontinue antidepressant use. Weber et al (2013), in a study of 194 individuals receiving parathyroidectomy surgery and a control group of 186 individuals undergoing benign non-toxic thyroid surgery, demonstrated that post-surgery, the parathyroidectomy group showed significant declines in symptoms of depression and a 51% reduction in the prevalence of suicidal thoughts, as well as improvements in quality of life.

Based on our literature search we report on two further studies since 2014 that used current surgical criteria and biochemistry, appropriate control groups and objective rating scales. Liu et al (2021) and Kearns et al (2019) showed that pre-surgery patients with PHPT were more symptomatic (using PHQ-9) than those having thyroid surgery. Both studies also demonstrated that patients with PHPT had significant improvement in terms of depressive symptoms post-surgery, although there were no significant differences in symptoms between the two groups post-operatively.

In the Liu et al (2021) study, 27.5% of the 244 patients with PHPT experienced moderate to severe depression pre-operatively, compared with 18% of the 161 who underwent thyroidectomy. After surgery, this dropped to 8.2% in the PHPT group and 5.3% in the thyroid group ( $P < 0.01$ ). The study was well-conducted, across multiple centres and employed modern objective rating scales. A limitation of the study was that the authors did not comment on the use of antidepressants or other psychotropics and or how these were managed post-surgery. In addition, follow-up was conducted in the very short term, 2–3 weeks post-surgery.

Kearns et al (2019), in a smaller single-centre study, also showed that depressive symptoms were higher in the PHPT group than in control thyroid group pre-surgery, with median scores on the PHQ-9 of 7.5 and 3.0 respectively. Both groups showed significant improvements post-surgery, with median PHQ-9 scores of 2 and 1 respectively. This study did assess antidepressant use and correlated this with PHQ-9 scores, and had longer-term follow-up of patients (12 months). Baseline parathyroid hormone levels, but not calcium levels, had a weak relationship with change in PHQ-9 score after parathyroid surgery ( $P = 0.003$ ). The authors suggested that such depression scores should be a relative indication for surgery.

Both the Liu et al (2021) and Kearns et al (2019) studies provided supportive evidence that parathyroidectomy improves symptoms measured using symptomatic rating tools such as the PHQ-9 or Generalised Anxiety Disorder Questionnaire (GAD-7). The findings were not conclusive, given that psychiatric clinical diagnoses were not formally made pre- or post-surgery. It would be helpful to have more research on whether parathyroid hormone or adjusted calcium levels correlate with depressive symptoms pre-surgery, although research thus far has not shown such correlations to be evident (Joborn 1988; Kearns 2019; Kunert 2020).

The National Institute for Health and Care Excellence (NICE) does not currently recognise depression in PHPT as a criterion for surgical intervention (NICE 2019), but there is growing evidence that it should be considered, particularly if it meets criteria for moderate or severe illness. It seems likely that individuals with PHPT meeting current criteria for surgery who also have a moderate or severe depressive disorder can be advised that these depressive symptoms may improve post-surgery. However, we cannot be sure that all depressive symptoms will resolve, as even in studies with well-defined criteria not every patient improves. Further research in this field needs to be more meticulous in determining pre- and post-operatively

whether patients have depressive symptoms rated on an objective scale like the PHQ-9 or, preferably, diagnosed using ICD or DSM criteria for depressive disorder. Greater attention should also be paid to any treatments for depression provided pre- and post-operatively. A recent prospective cohort study examining the use of selective serotonin reuptake inhibitors (SSRIs) and benzodiazepines showed that benzodiazepine use declined post-surgery whereas SSRI use remained unchanged (Koman 2022). Therefore, the current literature remains unclear regarding when or how a clinician might approach cessation of antidepressant medication.

#### Cognitive impairment and dementia

Two systematic reviews have examined the question of whether PHPT impairs cognition. Lourida et al (2015) covered studies up to 2014 and Jiang et al (2020) updated the literature to 2020. Both reviews noted that the studies used widely varying methods of cognitive assessment, making meta-analysis impossible and therefore only narrative synthesis was possible. Neither review felt able to state that any of the studies were of high quality although some were of good quality. Methodological issues, such as various sample sizes and the inconsistent use of controls, hampered the ability of these reviewers to reach definitive conclusions.

In terms of prospective follow-up studies examining the effects of raised parathyroid hormone levels in the community, there are three main large, long-term prospective studies highlighted in the review by Jiang et al (2020). Kim et al (2017) demonstrated in a very large sample ( $n = 12\,964$ ) over 20 years that there was cognitive decline but no independent effect of parathyroid hormone on this cognitive decline. Hagström et al (2014), in a fairly large sample ( $n = 998$ ), found an association between elevated parathyroid hormone levels and the development of vascular dementia, but not Alzheimer's disease, over a 15.8 year follow-up period. Björkman et al (2010) showed a correlation between parathyroid hormone and memory at 1 year which is not upheld at 10 years. Cross-sectional studies in this area have demonstrated mixed results. Therefore, we agree broadly with the conclusions of Jiang et al (2020) and Lourida et al (2015) that there is only weak and inconsistent evidence for an association between PHPT and impaired cognitive function.

A number of smaller prospective cohort studies have been conducted that used more detailed neuropsychological testing. Lourida et al (2015) found 13 pre-/post-surgery studies involving patients with PHPT. In the eight studies that had control groups, patients improved in at least one cognitive

domain. Five of the eight studies reported improvement on at least some memory tests, but often not all of the memory subtests. Studies by Walker et al (2009) and Roman et al (2011) had large sample sizes ( $n = 128$  and  $n = 159$ ) and showed marked improvement in memory tests post-surgery. None of the five studies that examined executive function showed any post-surgery improvement, and attention improved in one of the studies. In contrast, more recent work by Lightle et al (2024) showed improvement post-surgery relative to the general population across a neuropsychological battery (BrainCheck). The sub-analysis showed improvement in executive functioning specifically, with adjustment for ethnicity, gender, diabetes, hypertension, hypothyroidism, history of renal calculi and osteoporosis. Nevertheless, this study did not account for depression or anxiety as possible confounders. Lourida et al (2015) were correctly concerned by the lack of control groups in earlier post-surgical studies and that testing was completed too early, so that the effects of surgery were difficult to differentiate from practice effects. Some more recent studies did examine patients later after surgery. They show improvements on the Mini-Mental State Examination (MMSE) at 2 months (Wang 2023) and 6 months post-operatively (Trombetti 2016). Nevertheless, studies lack sufficient control groups or examination of medical and psychological confounding symptoms to be fully conclusive.

Although earlier work tended to focus on the potential impact of surgery, more recent work by Koman et al (2021) demonstrates that there may be a beneficial effect of calcimimetic therapy alongside surgery, with benefits measured by the Montreal Cognitive Assessment (MoCA) after 4 weeks of calcimimetic therapy, and then at 6 weeks and 6 months post-operatively ( $n = 110$ ). Koman et al found a positive response to cinacalcet to be a predictor of improvement post-parathyroidectomy.

As noted in the earlier Lourida et al (2015) review, there remains an ongoing issue that few studies of cognition adjust or control for age, gender, education, anxiety, depression, or calcium and vitamin D levels. Like Lourida et al (2015), we agree that there is certainly a suggestion from these pre- and post-surgical studies that surgery improves at least some cognitive domains, and in particular some memory tests, which is highly clinically relevant for patients and their clinicians. However, to be conclusive about this, more robust research is needed involving larger numbers, at least 6-month follow-up post-surgery to avoid practice effects, and appropriate adjustments for calcium levels, vitamin D levels, age, gender, education, and medical and



psychiatric comorbidities. We suggest that future studies should include both bedside tests to examine for obvious cognitive changes and which could be utilised by all clinicians, and more sophisticated neuropsychological batteries to examine for more subtle changes. In addition, future studies need to be multicentre with a matched non-cancer thyroid control groups to consider medical and psychological confounding factors and matched healthy controls to determine whether neuropsychological function is significantly impaired.

### Lithium-associated hyperparathyroidism

Lithium has a long history of use for mood disorders, although there is evidence that it has recently been underused owing to concerns about side-effects. Hypercalcaemia can emerge as a side-effect at any point of treatment (Meehan 2018), with an estimated prevalence of 10% in longer-term users (Szalat 2009). This is usually asymptomatic or mild and is associated with an inappropriately normal or elevated parathyroid hormone level.

Lithium-associated hyperparathyroidism (LAH) occurs in around 4–6% of patients taking the medication (Szalat 2009) and occurs at a female:male ratio of 3:1 (McHenry 1996). The absolute risk of PHPT is 100 times greater with lithium use (10%) compared with risk in the general population (0.1%).

### Underlying mechanisms

The mechanisms underlying the occurrence of hyperparathyroidism with lithium use are poorly understood. There are three theories currently in contention. According to the set-point theory, lithium disrupts calcium-sensing receptors (CaSR) on the parathyroid glands, increasing the calcium set point at which suppression of parathyroid hormone release occurs. This compromises sensitivity to negative feedback, with a net effect of increased gland activity for any given serum calcium level (Shen 1982; Lehmann 2013). Another theory suggests that lithium aggressively ‘unmasks’ a parathyroid gland’s existing predisposition for disease (Nordenström 1992; Livingstone 2006; Meehan 2015). Finally, a third theory suggests that lithium directly stimulates increased parathyroid hormone secretion which, over time, results in gland hyperplasia. Supporting this theory, one study demonstrated that mean parathyroid volume was three times larger in long-term users of lithium (more than 3 years) compared with short-term users (less than 6 months) and healthy controls (Malette 1989).

### Prevalence and monitoring

Studies have correlated lithium use with increased serum calcium and parathyroid hormone levels

(Christiansen 1978). The largest comprehensive review monitored 423 lithium users in two different locations (Meehan 2015). Of these, 18% ( $n=77$ ) were identified as suffering from LAH. Those with LAH had a median age of 65 years and the majority were women ( $n=58$ ). Around 20% of patients receiving lithium treatment experienced an episode of hypercalcaemia. On average, parathyroid hormone levels were 32 ng/L higher in patients with LAH than in those without. Furthermore, a positive correlation was identified between duration of treatment and the risk of developing LAH. The study’s authors advocate for long-term clinical surveillance of female lithium users and acknowledge that their results did not account for the effects of polypharmacy (Meehan 2015).

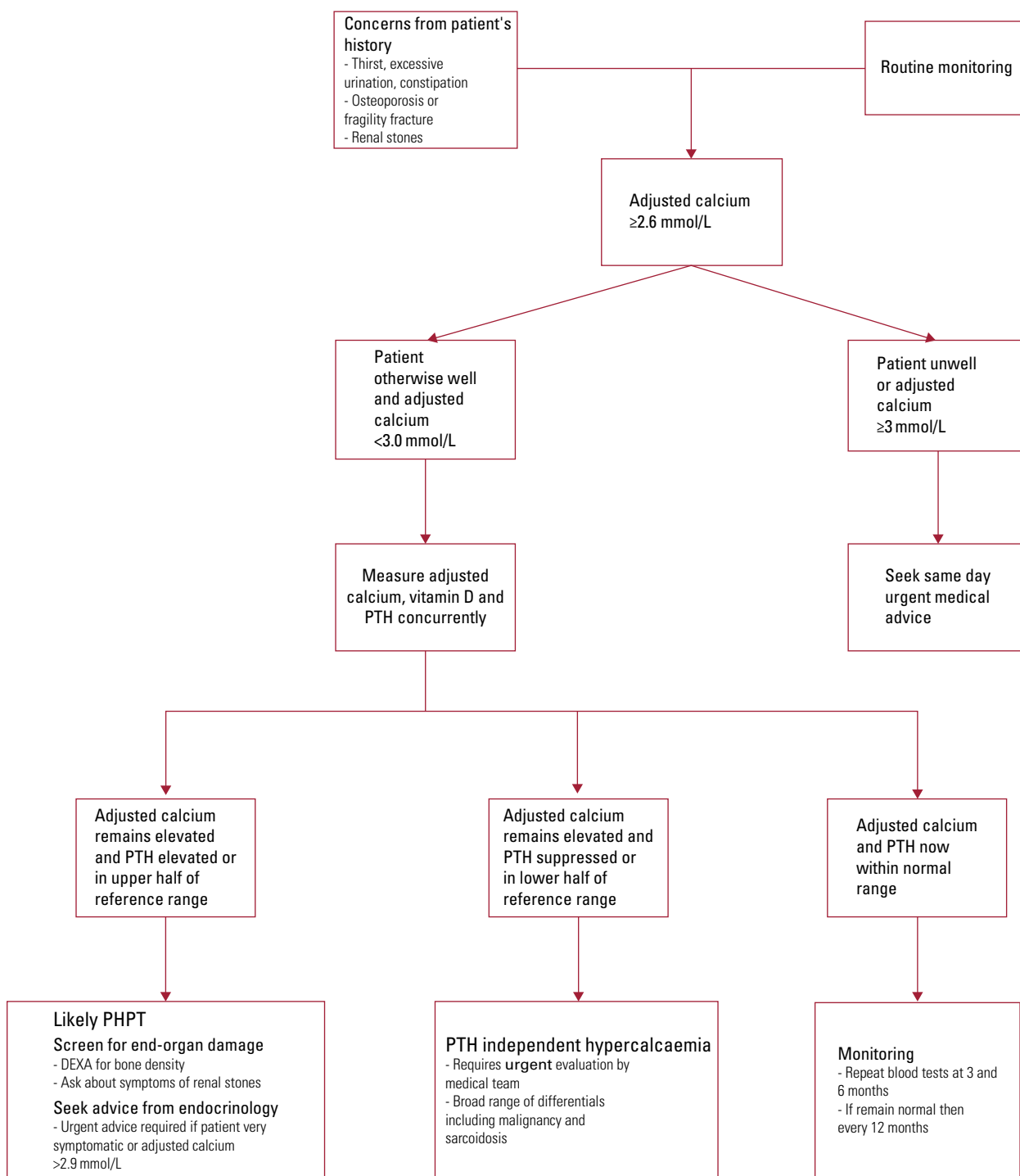
Most current guidelines on lithium prescribing recommend monitoring of patients, including calcium levels, every 3 months in the first year and then 6 monthly as a minimum during the maintenance phase and more often if calcium is raised. This is even more relevant with ageing and in women. In National Health Service practice in the UK, endocrinologists will usually continue to monitor patients with LAH. In patients who have been on lithium for many years, parathyroid hormone-dependent hypercalcaemia is unlikely to resolve with dose reduction or cessation of the drug, and reduction or cessation are often undesirable when weighing up the risk of deterioration in their mental health. Lithium-associated hyperparathyroidism is best managed by endocrinologists. Surveillance with cinacalcet treatment, if indicated, is often preferred over parathyroidectomy as most patients will have multi-gland disease.

### Management of suspected primary hyperparathyroidism

A psychiatrist may suspect PHPT owing to concerns about their patient’s general health or because of an incidental finding of hypercalcaemia as part of routine blood monitoring. A proposed algorithm for the psychiatrist to manage the condition is outlined in Fig. 1.

Patients who are medically unwell or who have a new finding of an adjusted calcium level above 3 mmol/L should be discussed urgently with a medical specialist.

If the adjusted calcium levels remain persistently elevated ( $\geq 2.6$  mmol/L), although not dangerously so, then serum parathyroid hormone, vitamin D and calcium levels should be checked again concurrently, i.e. on the same day. In addition, if vitamin D levels are low ( $<30$  nmol/L) or insufficient ( $<50$  nmol/L), it is recommended that supplements are offered (NICE2019).



**FIG 1** Protocol for the management of suspected hyperparathyroidism for psychiatrists. DEXA, dual-energy X-ray absorptiometry; PTH, parathyroid hormone; PHPT, primary hyperparathyroidism. Based on guidelines developed by the American Association of Endocrine Surgeons (Wilhelm 2016) and the National Institute for Health and Care Excellence (2019).

### Further specialist management

Endocrinologists confirm the diagnosis of PHPT and screen for complications by taking a careful history to look for symptoms of hypercalcaemia, dual-energy X-ray absorptiometry (DEXA) scanning of the lumbar spine, distal radius and hip to screen for low bone density, as well as ultrasound of the renal tract if kidney stones are suspected. Patients will also be

screened for factors that may point towards a genetic cause. In 3–5% of cases of PHPT there may be an inherited cause that warrants further investigation, such as multiple endocrine neoplasia type 1.

There is broad consensus that surgery remains the best and only definitive treatment for PHPT when indicated. Current NICE criteria for surgical intervention include symptoms such as thirst, frequent or

excessive urination or constipation, as well as end-organ disease (e.g. renal stones, fragility fractures or osteoporosis) or an adjusted serum calcium level of 2.85 mmol/L or above (NICE 2019). Surgery is also generally recommended in patients presenting under the age of 50. Patient preference and comorbidities are considered when evaluating the suitability of surgery. Antidepressants should be considered by psychiatrists or in general practice to treat depression and/or anxiety disorders pre-surgery and ongoing use post-surgery should be re-evaluated. Patients with PHPT symptoms tend to experience clear benefit from parathyroidectomy, and patients who do not experience classic symptoms of PHPT do also tend to report improvements in quality of life post-surgery (Wilhelm 2016). Although NICE does not include depression as an indication for surgery, there is a consensus among panels who have developed guidance that non-specific symptoms such as depressive symptoms and fatigue do appear to improve after surgery, making it a potentially cost-effective intervention to prevent further deterioration in health (National Institute for Health and Care Excellence 2019).

For those who are unwilling or unable to have surgery, observation can be considered. This should include annual biochemical monitoring and DEXA scans every 2–3 years, as there is evidence that bone mineral density reduces over time with untreated PHPT. Specific treatment can be considered with cinacalcet, a calcimimetic agent that inhibits parathyroid hormone secretion. This is indicated for those with adjusted calcium levels above 2.85–2.90 mmol/L (depending on local agreed protocols) and symptoms of hypercalcaemia, or those with adjusted calcium above 3.0 mmol/L, irrespective of their symptom status. Cinacalcet should be initiated by an endocrinologist. Bisphosphonates are also considered in people with PHPT who have an increased fracture risk (Wilhelm 2016; NICE2019).

### Case vignettes

The following fictitious case vignettes illustrate various presentations of hyperparathyroidism on an old age psychiatry ward.

#### Case 1

Mrs A, an 89-year-old woman with no history of depression, presented with confusion, aggression and low mood to an acute medical hospital. She was investigated for her acute confusion and found to have significant hypercalcaemia with an adjusted calcium level of 2.9 mmol/L (normal range 2.2–2.6 mmol/L) and raised parathyroid hormone level of 14 pmol/L (normal range 1.48–7.63 pmol/L). Her vitamin D levels were in the normal range.

Mrs A was reviewed by an endocrinologist, who confirmed the diagnosis of primary hyperparathyroidism

(PHPT). She was treated urgently with cinacalcet and her confusion and aggression improved. Her calcium levels improved to 2.4 mmol/L, which is within the normal range. She had liaison psychiatry input for her mood, which remained depressed and she was suicidal, and she was transferred to an acute psychiatric ward for further management of her depression.

She was reviewed by an endocrinologist a month into her psychiatric admission. They explained to her that she had PHPT and that mood disorder was often driven by hypercalcaemia, which was now normal on cinacalcet. The possibility of surgery was discussed with her, but she was not keen on this at her advanced age. She had responded well to cinacalcet so was felt to be unlikely to benefit greatly from surgery in terms of her mood. She was offered ongoing follow-up by the endocrinology clinic. Over several months Mrs A gradually improved from her depression on venlafaxine and aripiprazole. She remained normocalcaemic on cinacalcet.

#### Case 2

Mr B, a 70-year-old man, presented to an in-patient old age psychiatry service with severe depression in the context of a bipolar disorder and hyperparathyroidism. The latter was diagnosed on completing routine admission bloods. His psychiatric history included a severe suicide attempt in the context of depression at the age of 25, with an episode of mania a year later, after which he had been started on lithium. He had remained on lithium since that episode (he recalled being told to ‘never stop the lithium’ by his psychiatrist) but continued to be symptomatic all his life. Unfortunately, his bipolar disorder became even more turbulent with age.

Despite the development of lithium-associated hyperparathyroidism (LAH) in later life, he did not want to consider stopping lithium and refused parathyroidectomy. His endocrinologists prescribed cinacalcet, which controlled his hypercalcaemia. He made a slow recovery from his depression with a combination of low doses of lithium, antidepressant treatment, antipsychotics and psychology input.

#### Case 3

Mrs B, a 68-year-old woman with a long-standing history of schizophrenia, had stopped her regular long-acting injectable antipsychotic 6 months prior to admission. She was detained in a psychiatric hospital for becoming increasingly anxious about neighbours, whom she accused of shining lights into her house every night and interfering with the sewers. She had started to shout and swear at them and threatened to harm them. She had also not been eating well and neglecting her self-care for several months.

Routine blood tests on admission revealed an adjusted calcium level of 2.69 mmol/L and elevated parathyroid hormone level of 18.9 pmol/L, consistent with primary hyperparathyroidism. With further investigation of her vitamin D levels, she was noted to be deficient at 12 nmol/L. A decision was made to start her on standard replacement doses of vitamin D (cholecalciferol 1000 IU once daily) because of the risk of exacerbating hypercalcaemia with high-dose replacement therapy. After 4 months of cholecalciferol her vitamin D was sufficient at 59 nmol/L, her parathyroid hormone level had

reduced to the upper limit of normal at 8 pmol/L and her calcium had remained similarly mildly elevated at 2.70 mmol/L. She started to feel better. Her psychosis improved on a long-acting injectable antipsychotic and she returned home with support of the community psychiatric team and a package of care. The psychosis was not considered to be related to her initially raised calcium levels.

## Conclusions

Psychiatrists need to be vigilant for hyperparathyroidism, which may easily go undetected unless serum-adjusted calcium levels and subsequent parathyroid hormone levels are investigated. The prevalence of primary hyperparathyroidism (PHPT) is higher in older people, especially in women.

In PHPT, moderate to severe depressive symptoms occur pre-parathyroidectomy in roughly a quarter of individuals and approximately two-thirds improve a year after surgery. We would advocate that depression is taken into account when considering indications for surgery, provided patients are carefully counselled regarding the poor-quality evidence in this area. Further research is needed to guide antidepressant treatment, particularly regarding when to withdraw this post-surgery if the depression may be attributed to PHPT.

In our view, the pre- and post-parathyroidectomy studies for PHPT demonstrate that some cognitive domains may improve post-surgery, although findings regarding which domains improve remain inconsistent across studies. More recently, there is a suggestion that a response to cinacalcet may predict improvement after parathyroidectomy, although this requires further study. Further research is needed in larger sample sizes, incorporating testing completed pre-operatively and at least 6 months post-operatively to be more conclusive regarding

whether there is improvement in cognition, independent of mood changes. The research on the longer-term effects of having chronically raised parathyroid hormone over 10–20 years has methodological constraints preventing conclusive statements, but suggests that parathyroid hormone alone is unlikely to have an independent effect on cognitive decline.

## Data availability

Data sharing is not applicable to this article as no new data were created or analysed in this study.

## Acknowledgements

We thank Trisha Moore, librarian at Fulbourn Hospital, Cambridgeshire and Peterborough NHS Foundation Trust (CPFT), for her invaluable support in helping with the literature search and access needed to read papers for this article. We also thank Dr Marija Farrugia, consultant psychiatrist, CPFT, for her earlier support and discussion of the article.

## Author contributions

S.S.: conceptualisation, writing, reviewing, redrafting, editing. V.S.: redrafting, reviewing, editing. A.H.E.K.: conceptualisation, redrafting, reviewing, editing. J.S.R.: conceptualisation, writing, reviewing, editing and supervision.

## Funding

This work received no specific grant from any funding agency, commercial or not-for-profit sectors.

## Declaration of interest

None.

### Multiple choice questions

Select the single best option for each question stem:

1 For which of the following indications do the NICE guidelines recommend surgery in people with PHPT?

- a psychosis
- b mild depression
- c osteoporosis
- d dementia
- e fatigue.

2 Which of the following symptoms is a feature of PHPT?

- a brittle nails
- b weight loss
- c renal stones
- d tachycardia
- e night sweats.

3 Lithium-induced hyperparathyroidism:

- a presents with different biochemical features to primary hyperparathyroidism
- b usually emerges in the first month of treatment
- c is more common in men taking lithium
- d should be discussed with an endocrinologist
- e should lead to immediate cessation of lithium.

4 For a patient with depression and an adjusted calcium of 2.7 mmol/L, the most appropriate option would be:

- a immediate referral for surgery
- b urgent referral for in-patient medical management
- c identifying whether they are taking calcium supplements and stopping these if present
- d testing the patient's vitamin E levels
- e initiation of cinacalcet immediately.

5 As regards patients with PHPT going for parathyroidectomy surgery:

- a depression occurs in one-third to two-thirds of patients
- b depression always resolves post-surgery
- c studies show that surgery leads to resolution of dementia
- d psychiatric symptoms are currently part of the NICE criteria for surgery
- e stopping antidepressants is recommended.



## References

- Bilezikian JP (2018) Primary hyperparathyroidism. *Journal of Clinical Endocrinology & Metabolism*, **103**: 3993–4004.
- Björkman MP, Sorva AJ, Tilvis RS (2010) Does elevated parathyroid hormone concentration predict cognitive decline in older people? *Aging Clinical and Experimental Research*, **22**: 164–9.
- Carsote M, Nistor C, Stanciu M, et al (2023) Neuroendocrine parathyroid tumors: quality of life in patients with primary hyperparathyroidism. *Biomedicines*, **11**: 2059.
- Christiansen C, Baastrup PC, Lindgreen P, et al (1978) Endocrine effects of lithium: II. 'Primary' hyperparathyroidism. *Acta Endocrinologica (Copenhagen)*, **88**: 528–34.
- Hagström E, Kilander L, Nylander R, et al (2014) Plasma parathyroid hormone is associated with vascular dementia and cerebral hyperintensities in two community-based cohorts. *Journal of Clinical Endocrinology & Metabolism*, **99**: 4181–9.
- Jiang W, Hu C-Y, Li F-L, et al (2020) Elevated parathyroid hormone levels and cognitive function: a systematic review. *Archives of Gerontology and Geriatrics*, **87**: 103985.
- Joborn C, Hetta J, Johansson H, et al (1988) Psychiatric morbidity in primary hyperparathyroidism. *World Journal of Surgery*, **12**: 476–80.
- Kearns AE, Espiritu RP, Vickers Douglass K, et al (2019) Clinical characteristics and depression score response after parathyroidectomy in primary hyperparathyroidism. *Clinical Endocrinology*, **91**: 464–70.
- Kim SM, Zhao D, Schneider ALC, et al (2017) Association of parathyroid hormone with 20-year cognitive decline: the ARIC study. *Neurology*, **89**: 918–26.
- Koman A, Bränström R, Pernow Y, et al (2021) Prediction of cognitive response to surgery in elderly patients with primary hyperparathyroidism. *BJS Open*, **5**(2): zraa029.
- Koman A, Bränström R, Pernow Y, et al (2022) Neuropsychiatric comorbidity in primary hyperparathyroidism before and after parathyroidectomy: a population study. *World Journal of Surgery*, **46**: 1420–30.
- Kroenke K, Spitzer R, Williams JW (2001) The PHQ-9. *Journal of General Internal Medicine*, **16**: 606–13.
- Kunert Ł, Gawrychowski J, Sobis J, et al (2020) Depressive and anxiety disorders in patients with primary hyperparathyroidism. *Psychiatr Pol*, **54**: 1091–107.
- Lehmann SW, Lee J (2013) Lithium-associated hypercalcemia and hyperparathyroidism in the elderly: what do we know? *Journal of Affective Disorders*, **146**: 151–7.
- Lightle WR, Zheng F, Makris KI, et al (2024) Objectively measured cognitive dysfunction in patients with primary hyperparathyroidism improves after parathyroidectomy. *Surgery*, **175**: 161–5.
- Liu JY, Peine BS, Mlaver E, et al (2021) Neuropsychologic changes in primary hyperparathyroidism after parathyroidectomy from a dual-institution prospective study. *Surgery*, **169**: 114–9.
- Livingstone C, Rampes H (2006) Lithium: a review of its metabolic adverse effects. *Journal of Psychopharmacology*, **20**: 347–55.
- Lorenz FJ, Beauchamp-Perez F, Manni A, et al (2022) Analysis of time to diagnosis and outcomes among adults with primary hyperparathyroidism. *JAMA Network Open*, **5**(12): e2248332.
- Lourida I, Thompson-Coon J, Dickens CM, et al (2015) Parathyroid hormone, cognitive function and dementia: a systematic review. *PLoS One*, **10**: e0127574.
- Madkhali T, Alhefthi A, Chen H, et al (2016) Primary hyperparathyroidism. *Ulusal Cerrahi Dergisi*, **32**: 58–66.
- Mallette LE, Khouri K, Zengotita H, et al (1989) Lithium treatment increases intact and midregion parathyroid hormone and parathyroid volume. *Journal of Clinical Endocrinology & Metabolism*, **68**: 654–60.
- McHenry CR, Lee K (1996) Lithium therapy and disorders of the parathyroid glands. *Endocrine Practice*, **2**: 103–9.
- Meehan AD, Humble MB, Yazarloo P, et al (2015) The prevalence of lithium-associated hyperparathyroidism in a large Swedish population attending psychiatric outpatient units. *Journal of Clinical Psychopharmacology*, **35**: 279–85.
- Meehan AD, Udumyan R, Kardell M, et al (2018) Lithium-associated hypercalcemia: pathophysiology, prevalence, management. *World Journal of Surgery*, **42**: 415–24.
- National Institute for Health and Care Excellence (2019) *Hyperparathyroidism (Primary): Diagnosis, Assessment and Initial Management (NICE Guideline NG132)*. NICE.
- Nordenström J, Strigård K, Perbeck L, et al (1992) Hyperparathyroidism associated with treatment of manic-depressive disorders by lithium. *European Journal of Surgery*, **158**: 207–11.
- Pappachan JM, Lahart IM, Viswanath AK, et al (2023) Parathyroidectomy for adults with primary hyperparathyroidism. *Cochrane Database of Systematic Reviews*, **3**(3): CD013035.
- Parks KA, Parks CG, Onwuameze OE, et al (2017) Psychiatric complications of primary hyperparathyroidism and mild hypercalcemia. *American Journal of Psychiatry*, **174**: 620–2.
- Roman SA, Sosa JA, Pietrzak RH, et al (2011) The effects of serum calcium and parathyroid hormone changes on psychological and cognitive function in patients undergoing parathyroidectomy for primary hyperparathyroidism. *Annals of Surgery*, **253**: 131–7.
- Serdenes R, Lewis M, Chandrasekhara S (2021) A clinical review of the psychiatric sequelae of primary hyperparathyroidism. *Cureus*, **13**(10): e19078.
- Shen F-H, Sherrard DJ (1982) Lithium-induced hyperparathyroidism: an alteration of the 'set-point'. *Annals of Internal Medicine*, **96**: 63–5.
- Soto-Pedre E, Newey PJ, Leese GP (2023) Stable incidence and increasing prevalence of primary hyperparathyroidism in a population-based study in Scotland. *Journal of Clinical Endocrinology & Metabolism*, **108**: e1117–24.
- Szalat A, Mazeh H, Freund HR (2009) Lithium-associated hyperparathyroidism: report of four cases and review of the literature. *European Journal of Endocrinology*, **160**: 317–23.
- Trombetti A, Christ ER, Henzen C, et al (2016) Clinical presentation and management of patients with primary hyperparathyroidism of the Swiss primary hyperparathyroidism cohort: a focus on neuro-behavioral and cognitive symptoms. *Journal of Endocrinological Investigation*, **39**: 567–76.
- Walker MD, McMahon DJ, Inabnet WB, et al (2009) Neuropsychological features in primary hyperparathyroidism: a prospective study. *Journal of Clinical Endocrinology & Metabolism*, **94**: 1951–8.
- Walker MD, Silverberg SJ (2018) Primary hyperparathyroidism. *Nature Reviews Endocrinology*, **14**: 115–25.
- Wang Y, Xin Y, Zhao T, et al (2023) PTH levels, sleep quality, and cognitive function in primary hyperparathyroidism. *Endocrine*, **81**: 379–87.
- Weber T, Eberle J, Messelhäuser U, et al (2013) Parathyroidectomy, elevated depression scores, and suicidal ideation in patients with primary hyperparathyroidism: results of a prospective multicenter study. *JAMA Surgery*, **148**: 109–15.
- Wilhelm SM, Lee J, Prinz RA (2004) Major depression due to primary hyperparathyroidism: a frequent and correctable disorder. *American Surgeon*, **70**: 175–80.
- Wilhelm SM, Wang TS, Ruan DT, et al (2016) The American Association of Endocrine Surgeons guidelines for definitive management of primary hyperparathyroidism. *JAMA Surgery*, **151**: 959–68.

### MCQ answers

1 c 2 c 3 d 4 c 5 a