

Projected environmental shifts under climate change: European trends and regional impacts

M.J. METZGER^{1,2,3*}, R.G.H. BUNCE³, R. LEEMANS² AND D. VINER⁴

¹Wageningen University, Plant Production Systems Group, PO Box 430, 6700 AK Wageningen, the Netherlands, ²Wageningen University, Environmental Systems Analysis Group, PO Box 47, 6700 AA Wageningen, the Netherlands, ³Alterra, Wageningen University and Research Centre, PO Box 47, 6700 AA Wageningen, the Netherlands, and ⁴Natural England, 122a Thorpe Road, Norwich NR1 1RN, UK

Date submitted: 2 August 2007; Date accepted: 17 January 2008; First published online: 3 April 2008

SUMMARY

Potential impacts of climate change on ecosystems and the environment are generally assessed by summarizing climate change scenarios for broad regions (for example countries), or by specific modelling exercises. This paper presents an alternative approach for summarizing climate change impacts on the European environment, by linking climate change scenarios to recognized environmental divisions. Sixteen climate scenarios from four general circulation models were therefore linked to 84 statistically derived strata sharing common environmental features. In this way, the future distribution of the strata, as defined by their climate characteristics, were quantified and mapped. The results show that Europe is likely to experience major environmental shifts, with pronounced regional variations. As expected, environmental strata shift northwards. In particular the southern Mediterranean strata are projected to expand, whereas Atlantic environments remain much more stable. Alpine and Mediterranean mountain environments decline dramatically. However, the Scandinavian zones show no consistent pattern of change. More detailed analysis of four sample regions shows that the impacts of the projected shifts will largely depend on regional characteristics. Environmental conservation, regional assessments and scenario development could therefore be facilitated by combining relevant regional datasets (for example for vegetation, land cover and species distribution) with the shifting environmental strata.

Keywords: climate change, climate response surfaces, environmental stratification, Europe, potential impacts, regional assessment, shifting environments

INTRODUCTION

There is a growing consensus among scientists and the general public that the climate is changing, and that this trend is likely

to have serious impacts not only on natural ecosystems, but also on human well-being (IPCC [Intergovernmental Panel on Climate Change] 2007*a, b*; EEA [European Environment Agency] 2004; Reid *et al.* 2005). Over the past 100 years, the mean global surface temperature has risen by about 0.7°C, exceeding the natural variation over the past 1000 years (IPCC 2007*a*). Evidence of climate change impacts are also accumulating, as evinced by reductions in the size of glaciers, upward shifts in tree lines and increases in the length of the growing season (IPCC 2007*b*). Furthermore, phenological changes and range shifts have been observed in many taxa (IPCC 2007*b*).

Anticipating future trends in climate can help governments adapt to potential impacts and implement relevant policy measures. The IPCC has developed a range of alternative emissions scenarios, based on different socioeconomic development pathways for the 21st century (Nakicenovic *et al.* 2000). There is broad agreement between the general circulation models (GCMs), which were run for the emissions scenarios, that global mean global surface temperature is likely to rise between 2.0 and 4.5°C by the end of the century (IPCC 2007*a*). There is however considerable spatial variation in the projected changes. In addition, there is disagreement between the GCMs in relation to regional climate patterns and projected changes in precipitation (Ruosteenoja *et al.* 2003). In order to account for this uncertainty, the IPCC recommends the usage of climate data from multiple GCMs in all climate change impact assessments.

Impact models applied to gridded spatial datasets, containing simulated climate variables for future time periods (for example see Hulme *et al.* 1995; Mitchell *et al.* 2004), have been used to further assess potential climate change impacts at global or continental scales. Examples are the global impact assessment model IMAGE (IMAGE Team 2001), the Lund Potsdam Jena dynamic global vegetation model LPJ-DGVM (Sitch *et al.* 2003), and species distribution models (for example Thuiller *et al.* 2005). Because these modelling exercises generally cover large areas, involve many datasets and have to be performed for multiple scenarios and GCMs, the complexity of the interactions which can be incorporated is necessarily limited. Complex interactions are simplified, or approximated, and regional heterogeneity in pattern and process is ignored. In addition, these models require considerable technical expertise for their application. Nevertheless, analysis with such ecosystem models is very

*Correspondence: Dr Marc J. Metzger, School of GeoSciences, Drummond Street, University of Edinburgh, Edinburgh EH8 9XP, UK Tel: +44 131 651 4446 Fax: +44 131 650 2524 e-mail: marc.metzger@ed.ac.uk

important for translating abstract changes in the climate variables into specific potential impacts that are more directly interpretable and relevant in both public debate and the policy arena.

This paper presents an alternative translation of a high-resolution gridded climate change dataset for Europe (Mitchell *et al.* 2004). Instead of determining climate response surfaces for specific species (Thuiller *et al.* 2005), biomes (IMAGE Team 2001), plant functional types (Sitch *et al.* 2003) or forest growth (Sabaté *et al.* 2002), we determined climate functions for the 84 strata of the Environmental Stratification of Europe (EnS) (Metzger *et al.* 2005a). The EnS was constructed by statistical clustering of mainly climate environmental variables into relatively homogeneous regions (for example distinct regions such as the British uplands, the Hungarian plains, the Po valley and numerous mountain regions, as well as statistically defined classes in regions with gradual environmental gradients). By fitting climate functions to the strata, a dataset has been constructed that illustrates how principal European environments are likely to shift under alternative climate change scenarios, in a similar way to earlier work on shifting biomes (see Tchebakova *et al.* 1993; Leemans *et al.* 1996). However, the EnS distinguishes more classes than biome classifications (which only differentiate about eight classes in Europe), and it also partitions climate variation and the strata have strong correlations with wider environmental parameters across Europe, such as growing season, soil properties, species distributions (Metzger *et al.* 2005a) and habitats (Bunce *et al.* 2008). The new dataset is therefore suitable for more detailed assessments at more regional scales, as we demonstrate for four sample regions.

While the EnS strata are generic compared to modelling exercises conducted for a specific issue (such as biodiversity, forestry and carbon sequestration), they provide a convenient summary of projected European climate shifts. Under current climate conditions, the EnS strata show significant correlations with a range of ecological factors. While these links may change in the future (Prentice *et al.* 1992), the climate envelopes associated with the EnS strata provide useful units for determining potential changes in ecological resources (similar to ecological niche modelling; see Thuiller *et al.* 2005). The shifting strata have been applied to assess agricultural yield shifts under climate change (Ewert *et al.* 2005, 2006) and vegetation change in a biodiversity assessment (Verboom *et al.* 2007). Furthermore, by combining the shifting strata with ancillary data, more complex analyses are possible, as demonstrated in this paper for four sample regions. In this way, the shifts in the distribution of strata can be used in the development of regional land-use change scenarios and to assess combined impacts of climate and land-use change on species dispersal (see del Barrio *et al.* 2006), as proposed by Opdam and Wascher (2004).

Because the EnS dataset of shifting environments is public, European environmental scientists have access to a convenient climate change dataset based on state-of-the-art emissions scenarios and multiple GCMs.

METHODS

We performed all GIS operations using ArcGIS version 8.2 (ESRI [Environmental Systems Research Incorporated] 2002) and statistical operations in SPSS version 11 (SPSS [Statistical Package for the Social Sciences] 2001) (Fig. 1).

Datasets

Environmental stratification of Europe (EnS)

Stratification into relatively homogeneous regions is important for strategic random sampling of ecological resources, the selection of sites for representative studies across the continent and the provision of strata for modelling exercises (Metzger *et al.* 2005a). The EnS was created using tried-and-tested statistical procedures so that the strata are unambiguously determined and, as far as possible, independent of personal bias.

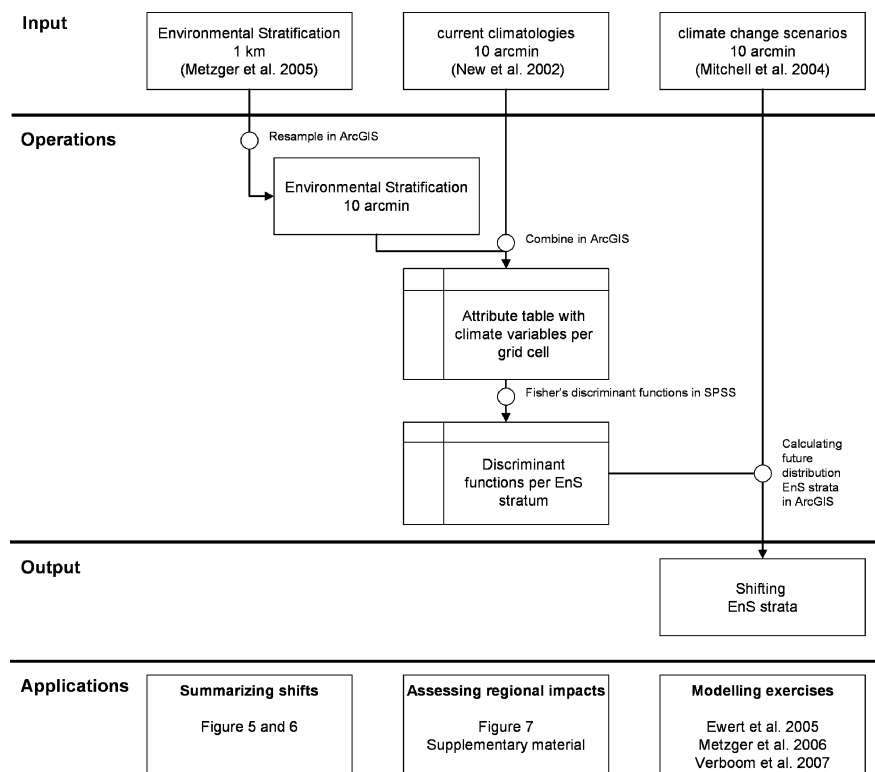
The EnS covers a 'greater European window' (11°W–32°E, 34°N–72°N), extending into northern Africa. This wider extent was needed to permit the statistical clustering to distinguish environments that have their main distribution outside the European continent. Furthermore, under future climate change, African environments are projected to expand into Europe (see Harrison *et al.* 2006), making it important to identify such environments.

Twenty of the most relevant available environmental variables were selected, based mainly on those identified by statistical screening (Bunce *et al.* 1996c). These were (1) climate variables from the Climatic Research Unit (CRU) TS1.2 dataset (Mitchell *et al.* 2004), (2) elevation data from the United States Geological Survey HYDRO1k digital terrain model, and (3) indicators for oceanicity and northing. Data were analysed at 1-km² resolution. Principal component analysis (PCA) was then used to compress 88% of the variation into three dimensions, which were subsequently clustered using an ISODATA clustering routine. The classification procedure is described in detail elsewhere (Metzger *et al.* 2005a).

The EnS consists of 84 strata, aggregated into 13 environmental zones (EnZs). These were constructed using arbitrary divisions of the mean first principal component score of the strata, with the exception of Mediterranean mountains, which were separated on altitude. Here we cover only 12 EnZs, as Anatolia (Turkey) is not covered in the current analysis. Within each EnZ, the EnS strata have been given systematic names based on a three-letter abbreviation of the EnZ to which the stratum belongs and an ordered number based on the mean first principal component score of the PCA. For example, the EnS stratum with the highest mean principal component score within the Mediterranean South EnZ is named MDS1 (Mediterranean South one). A detailed map of the EnS is provided as supplementary material to Metzger *et al.* (2005a).

Nine EnS strata occur in Africa, with four strata (MDS5–8) having their main distribution there. The most extreme stratum found in Europe (MDS7) was the hot and xeric

Figure 1 Flow chart summarizing the development of the database of shifting European environmental strata and applications.



environment around the Cabo de Gata in south-eastern Spain. MDS8 was restricted completely to the northern Sahara in Algeria and Tunisia.

Kappa analysis of aggregations of the strata shows they compare well with other European classifications (Metzger *et al.* 2005a, b). The EnS shows strong statistical correlations with other European environmental datasets (for example for soil and species distributions; Metzger *et al.* 2005a). The individual strata have been described using data from available environmental datasets.

High resolution grids of monthly climate

The TYN SCI.0 dataset consists of monthly climate information based on outputs from transient coupled atmosphere-ocean GCM simulations (Mitchell *et al.* 2004). The dataset has a spatial resolution of 10 arcmin longitude-latitude (for Europe approximately 16 km × 16 km), and contains mean monthly values for five climate variables from 2001–2100. A similar dataset of observed values (referred to as CRU TS1.2) covers 1901–2000 (New *et al.* 2002). The dataset variables are temperature, diurnal temperature range, precipitation, cloud cover and vapour pressure. We calculated four 30-year time slices for the climate datasets, as means of the variables, for the periods 1961–1990, 1991–2020, 2021–2050 and 2051–2080.

In order to provide as full a representation of the uncertainties in projections of regional climate change as possible, climate change scenarios were developed for four alternative greenhouse gas emissions scenarios and four GCMs. The emissions scenarios are based on the four narratives (A1,

A2, B1 and B2) of the IPCC special report on emissions scenarios (SRES; Nakicenovic *et al.* 2000). Each narrative is characterized by consistent driving forces of greenhouse gas emissions, including demographic change, economic development and technological development. To incorporate the range of potential changes that may occur for a given region and emissions scenario it has been recommended that the results from a number of GCM experiments are used (Viner 2002). The four GCMs used in this study (discussed in detail in IPCC 2001) were HadCM3, CSIRO2, NCAR PCM and CGCM2. The 16 climate change scenarios resulting from the combination of the four GCMs and the four emissions scenarios cover 93% of the range of uncertainty for global warming in the 21st century published by the IPCC (Nakicenovic *et al.* 2000).

Shifting environments

The original GIS file of the EnS (spatial resolution 1 km, equal area projection; Metzger *et al.* 2005a) was resampled to the 10 arcmin grid of the climate dataset (Mitchell *et al.* 2004), using the nearest neighbour resampling algorithm. Each grid cell of the 10 arcmin longitude-latitude EnS dataset was subsequently coupled to mean monthly values for the 1961–1990 average of four climate variables from the CRU TS1.2 dataset, namely temperature, diurnal temperature range, precipitation and cloud cover. Values for latitude and oceanicity (defined as the July–January temperature range divided by the sine of the latitude) were classification variables in the EnS and therefore also linked to each

grid cell. By including latitude, differences in day-length and radiation were incorporated. Oceanicity expresses the buffering influence of the ocean, resulting in cooler summers, milder winters and a lower degree of interseasonal variability. The resulting attribute table consists of 31 143 rows (one for each grid cell), 48 climate attributes from the TYN SC1.0 dataset, latitude, the oceanicity index and an identifier for the EnS stratum to which each grid cell belongs.

SPSS was used to calculate Fisher's discriminant functions (Fisher 1936; McLachlan 1992) for each EnS stratum. Given a set of interrelated variables, discriminant analysis determines linear combinations of those variables that best separate a set of distinct groups or classes. Fisher's linear discrimination rule finds a linear combination of the variables and determines the coefficients so that the ratio of the difference of the means of the linear combinations in the groups to its variance is maximized (Bunce *et al.* 1996c).

The equality of group means was tested using one-way ANOVA for each variable in order to assess whether all 50 predictors (i.e. the monthly climate variables, latitude and oceanicity) could potentially contribute to the discriminant analysis. We also calculated Wilks' lambda (a multivariate test statistic where lower values indicate that the variable is more effective at discriminating between groups) for each variable.

Fisher's linear discriminant functions were exported from SPSS and used in ArcGIS to determine the future distribution of the 84 strata from the monthly climate variables. Separate maps were created for the three time slices (2020, 2050 and 2080) for each emissions scenario and four GCMs (namely HadCM3, CSIRO2, NCAR PCM and CGCM2). The shift from the baseline environment was determined for the 2080 time slice in order to summarize the projected environmental shift for each grid cell. These shifts were summarised for each EnZ, indicating the direction of the shift, the area which had shifted to a different EnZ and the relative change in area of the EnZs. Student's t-test was used to analyse agreement in the shifts across GCMs and emissions scenarios.

The discriminant functions allocate an EnS stratum for each combination of climate conditions, effectively smoothing the original strata (Bunce *et al.* 1996a). The 1969–1990 baseline strata of the EnS were compared with the strata allocation determined by the discriminant functions to test how accurately they reproduced the original classification. To test whether the shifted EnS strata did represent the climate change projected by the climate dataset, mean values of the climate variables were calculated for each EnS stratum under baseline conditions. For the future time slices, these values were used to project climate change as determined by the shifting EnS strata. For each EnZ, regional summaries of these projections were compared with regional summaries from the TYN SC1.0 climate dataset by linear regression through the origin and for seasonal averages of the climate variables. We also created box plots for the differences between the projected climate variables as expressed by the shifting EnS strata and the TYN SC1.0 dataset.

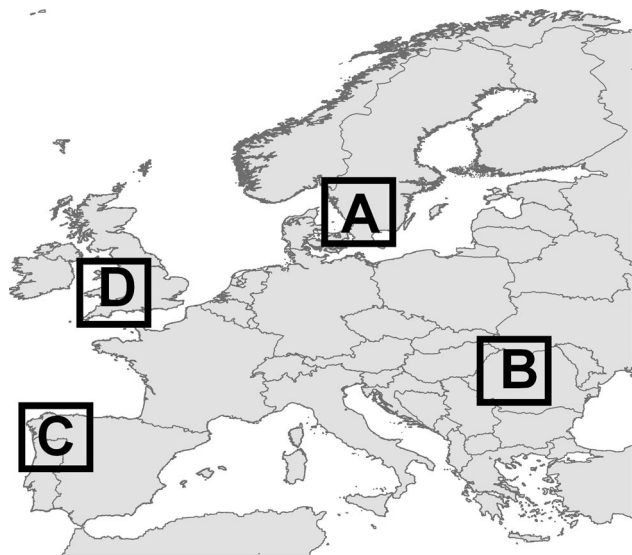


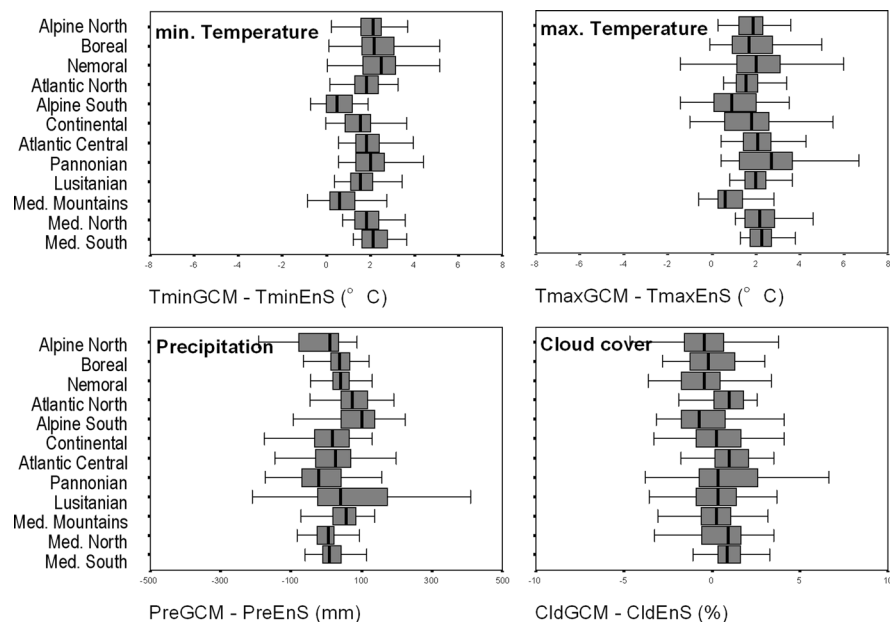
Figure 2 Map of Europe showing the location of the four sample regions. (A) southern Sweden, (B) the southern Carpathian Mountains, (C) the north-western Iberian Peninsula and (D) south-western England and Wales.

Sample regions

Whilst traditional modelling approaches (such as ecological niche modelling) provide specific information for a given entity (for example a species), the shifting strata provide more generic summaries of environmental shifts, which can be combined with ancillary data and expert knowledge to explore the potential impacts of climate change (Bunce *et al.* 1996b). Such information supports the development of adaptation or conservation measures for environmental sectors or services important to the area, such as forestry, agriculture and the diversity and abundance of characteristic habitats and species. We selected four contrasting sample regions, namely southern Sweden, the southern Carpathian Mountains, the north-western Iberian Peninsula and south-western England and Wales (Fig. 2). We will primarily concentrate on the Swedish region, while the other regions illustrate contrasting impacts projected across Europe (see Supplementary material at http://www.ncl.ac.uk/icef/EC_Supplement.htm). The sample region in southern Sweden is mainly situated within the Nemoral EnZ, which includes Europe's northern limits for agriculture and deciduous tree species. Approximately 40% of the area is used as arable land, mainly for cereals (barley, oats, and wheat) as well as forage production (Eurostat NewCronos, URL <http://epp.eurostat.ec.europa.eu>). The remaining area is mostly covered by predominantly coniferous forest, with some beech (*Fagus sylvatica*) and oak (*Quercus* spp) forests in the south. Birch (*Betula* spp) is present throughout the region. Natural vegetation is determined by human induced agricultural and forest landscapes. Under the climate change scenarios, the region is projected to become warmer and wetter.

For the sample regions, we produced maps of the EnS strata for baseline conditions and the 2080 time slice,

Figure 3 Box plots for each environmental zone, showing the difference between four climate variables, as projected by the TYN SC1.0 climate dataset and values associated with the EnS strata. Box plots depict the smallest observation, lower quantile, median, upper quantile and largest observation.



for one emissions scenario and two GCMs, and seasonal maps of change in mean maximum temperature (in °C) and mean precipitation (in % change) to assist in the interpretation of the shifting strata. For the Swedish region, we produced maps for four GCMs, in order to show how variability between GCM projections was translated into the EnS strata. Finally, for each sample region we produced maps, and for Sweden a table, used to interpret potential impacts (for example on nature conservation). We collected data on growing season and wheat productivity (Ewert *et al.* 2005), agricultural land use (Eurostat NewCronos, URL <http://epp.eurostat.ec.europa.eu>), and maps of the distribution of *Fagus sylvatica* and *Quercus ilex* s.l. (Köble & Seufert 2001), potential natural vegetation (Bohn *et al.* 2000) and principal land cover types (Mücher *et al.* 2001).

In most regions of Europe, there is a strong coincidence between land use, climate, geomorphology, soil and market demand (Metzger *et al.* 2005a). Shifting climate strata and some basic ancillary information can be used as a first indication of the potential impacts of climate change. More detailed regional assessments can be developed by combining further ancillary datasets on geomorphology and soils, as well as socioeconomic scenarios describing alternative changes in demand (see Rounsevell *et al.* 2006).

RESULTS

Shifting European environments

One-way ANOVA was significant for all variables and Wilks' lambda varied between the variables. The oceanicity indicator had the highest value (0.337), indicating the lowest discriminating power. The temperature variables and latitude had the lowest values (0.023–0.086). Values for precipitation (0.140–0.230) and cloud cover (0.047–0.174) were greater.

The discriminant functions allocated 75% of the grid cells to the same strata as the original dataset, resulting in minor differences to the published distribution patterns (Metzger *et al.* 2005a); the centre of gravity remained the same. Individual strata varied from 38% to 98%. In seven cases, < 50% of the grid cells were allocated correctly. Because the variation was continuous and divisions were arbitrary, misplaced grid cells occurred most frequently around the boundaries of strata, especially where environmental gradients occurred over large distances (for example in Central Europe). Misplaced grid cells were assigned to relatively similar EnS strata (with an adjacent EnS number, indicating a similar position on the first principal component; Metzger *et al.* 2005a; see Supplementary material at http://www.ncl.ac.uk/icef/EC_Supplement.htm, Table S1). The problematic strata often had a wide geographical spread, for example stratum CON2 covers foothills in the Alps, Central Europe and the Balkans, while MDM5 covers the southern foothills of the Pyrenees, the Massif Central and the Apennines.

The regression analysis was significant in all cases (four variables, four emissions scenarios, four GCMs; $R^2 > 0.95$). Nevertheless, box plots for the difference between the variables projected by the shifting EnS and the climate dataset showed that, for most regions, temperature change projected by the GCMs was about 2°C greater than that predicted by the shifting EnS (Fig. 3). Precipitation and cloud cover predictions by the shifting EnS closely resembled the climate dataset (Fig. 3).

Time series maps showed how environments expanded, contracted, shifted or remain stable (Fig. 4), for example strata that had their main baseline distribution in northern-Africa shifted into Europe, for two time slices and two different GCMs (Fig. 5). Projected shifts between EnZs are summarized within the multivariate environmental space,

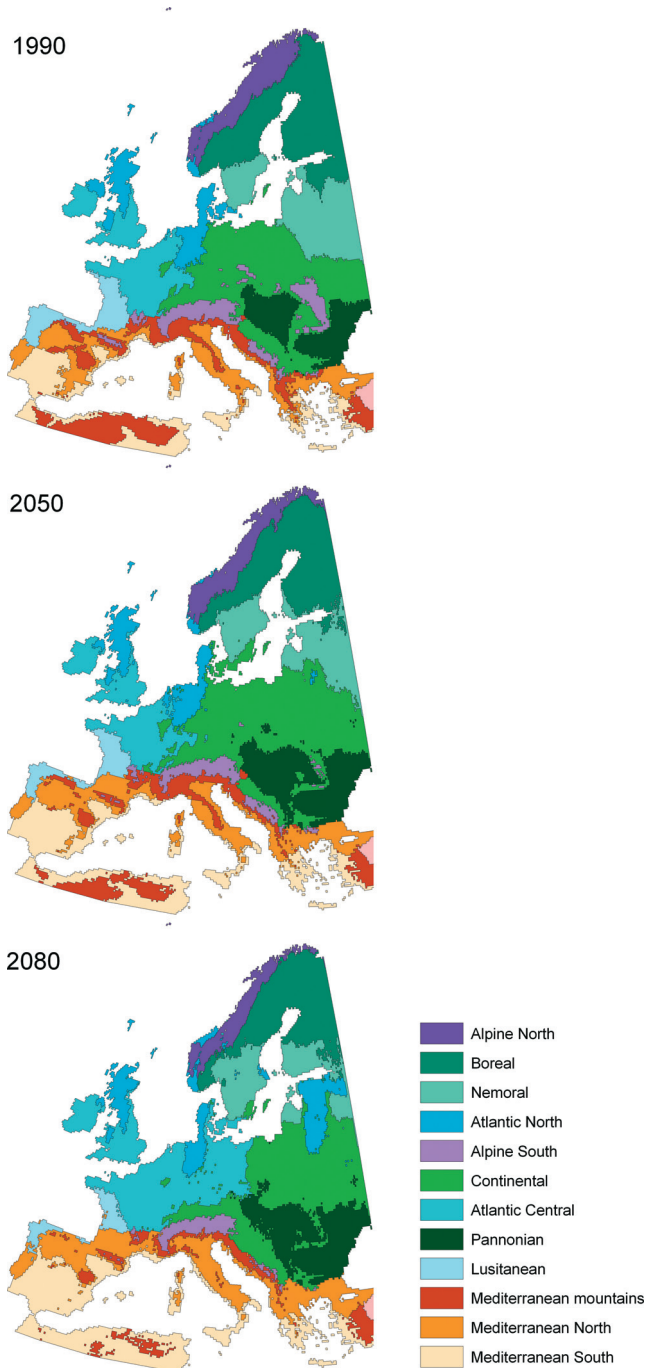


Figure 4 Shifting environmental zones in Europe assuming one climate change scenario (CGCM2 general circulation model; A2 emissions scenario) (Nakicenovic *et al.* 2000; IPCC 2001).

determined by the first two principal components of the PCA used to construct the EnS (see Metzger *et al.* 2005a; Fig. 6). When the maps for the different GCMs and scenarios are seen as independent observations of the future environment of Europe, all changes in extent are significant, except for Alpine North and Atlantic North (Table 1).

Southern environments shifted northwards (Fig. 6), confirming the concerns of the majority of climate change scientists. The drier and warmer Mediterranean South

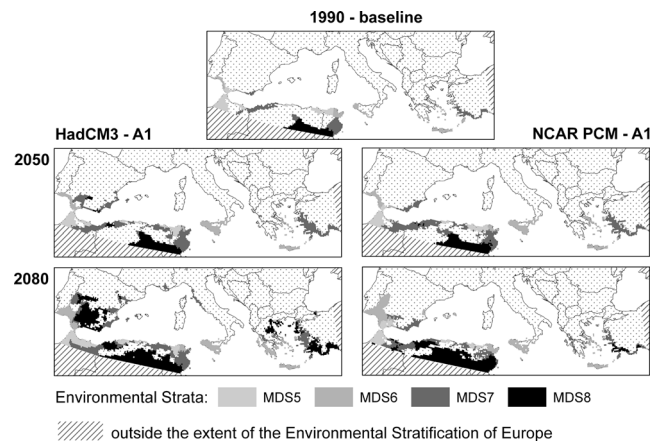


Figure 5 Shifts in the four southernmost strata (MDS5–8, main distribution currently in northern-Africa) assuming the A1 emissions scenario (Nakicenovic *et al.* 2000) and two general circulation models, namely the relatively modest NCAR PCM and the more extreme HadCM3 (IPCC 2001).

zone expanded northwards into the Mediterranean North environment indicating a potential expansion of desert habitats, and an increased risk of forest fires and drought. Lusitanian environments became drier and shifted into Mediterranean North, threatening endemic species and increasing the risk of droughts. Mediterranean Mountains and Alpine South environments decreased dramatically, becoming warmer Mediterranean North and Continental environments, respectively. Such a shift would have major implications for mountain plant species and ski tourism. The Continental zone underwent complex changes. In the centre it expanded into the Alpine and Carpathian mountain ranges. By contrast, in the east it shifted into the drier Pannonian, but in the west to the wetter Atlantic Central zone. Individual impacts are difficult to predict, but isolated habitats, such as low mountains and small nature reserves, are likely to change. Agriculture would also have to adapt to changing conditions. The Atlantic Central zone expanded northwards into Atlantic North, as well as into the Continental zone. Whilst the Atlantic environment is relatively stable compared to other regions, isolated habitats are likely to experience change. Agricultural productivity may increase under higher temperatures, although pests and diseases may also expand. In northern Europe, the GCMs made contradictory projections. As a result, changes for Atlantic North and Alpine North were not significant (Table 1; Fig. 4). Nevertheless there is agreement that Nemoral environments shift northward, and Boreal environments decrease in extent. Deciduous trees may be able to grow at more northern latitudes and higher altitudes. Forest structure could also significantly change. Permafrost will decrease in the north and associated habitats are highly threatened.

The sample region in southern Sweden

There was considerable variation in regional patterns between the four GCMs, especially for precipitation (Fig. 7). There

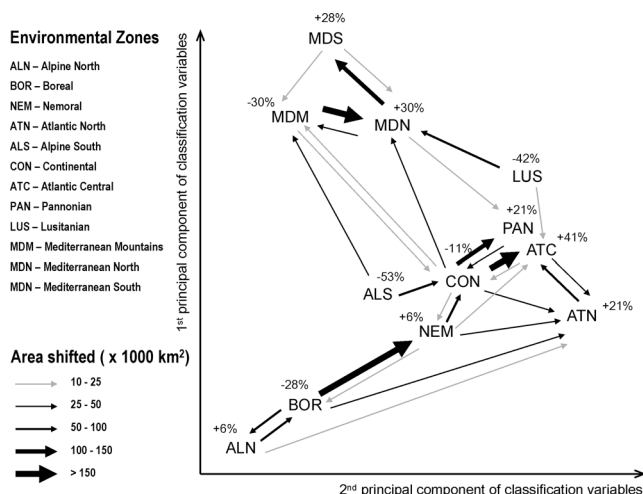


Figure 6 Shifting environmental zones, summarized across sixteen climate change scenarios, plotted in the environmental space of the classification variables of the environmental stratification of Europe. Arrows indicate the directions of projected shifts and the size of the shifting area (km²). Percentages refer to the change in extent of the environmental zones in 2080 compared to the 1990 baseline.

Excepting ALN and ATN, changes are significant.

was a general northward shift in the EnS strata. Changes in precipitation patterns will result in a strong expansion of Atlantic environments, which varied from a minor northwards shift of ATN5, the most northerly Atlantic stratum (HadCM3), to the arrival of Atlantic Central strata currently found in France (CGCM2). CSIRO2 projected a southward expansion of BOR8. This appeared to be caused by a strong increase in spring precipitation, characteristic of BOR8.

The projected environmental shifts would have favourable consequences for plant growth, leading to an expanded growing season, higher temperature sums and higher productivity (Table 2). As a result, the region would become increasingly suitable for more temperate crops. More importantly, yields of currently grown crops are likely to increase significantly (Ewert *et al.* 2005). Similar increases in productivity would also occur for tree species, which would be favourable for forestry. Deciduous tree species (for example *Fagus sylvatica*, which has its northern limits in stratum NEM6; Fig. 7) could also expand northwards. While natural migration is likely to be slow, forest management could influence distribution patterns by creating spaces for regeneration. Climate change is also likely to influence biodiversity, for example through the expansion of weed species with southern distributions (such as *Picris echioides*). Nevertheless, management effects, both in agriculture and forestry, are likely to be more widespread than effects of climate change.

Examples of regional impacts in three other sample regions (the Carpathian mountains, the north-western Iberian Peninsula, and south-west England and Wales) are discussed online (see Supplementary material at http://www.ncl.ac.uk/icef/EC_Supplement.htm).

DISCUSSION

We aimed to construct an appropriate dataset for the analysis of shifting European environments under climate change. The utility of the final dataset depends on the definition of European environments and the quality of the climate change dataset. Both datasets used in this study were considered to be the most suitable of their kind at the present time.

The EnS forms the most detailed quantitative classification of the European environment currently available (Metzger *et al.* 2005a; Jongman *et al.* 2006). Despite the fact that climate variables were used to construct the EnS instead of bioclimate variables, the EnS strata show high correlations with both the annual temperature sum ($R^2 = 0.95$) and the growing season ($R^2 = 0.83$) (Metzger *et al.* 2005a), indicating that strata are strongly correlated with ecological parameters used in ecological niche modelling (see Thuiller *et al.* 2005). The choice of variables will have some influence on the class boundaries, but statistical environmental classifications will have much in common and decisions between them are arbitrary (Bunce *et al.* 2002).

The TYN SC1.0 climate change dataset (Mitchell *et al.* 2004) has the highest spatial resolution of the gridded datasets available for Europe at this time and had been used in a range of state-of-the-art global change impact studies (for example Schröter *et al.* 2005; Thuiller *et al.* 2005). A further advantage is that TYN SC1.0 data are available for four socioeconomic emissions scenarios and four GCMs, giving the maximum representation of uncertainties in regional climate change (see Fig. 7). Communication of the results from impacts assessments to the policy community is difficult and as yet there appears to be no suitable framework available to incorporate the sources of uncertainty, besides taking into account alternative development pathways and multiple GCMs (Viner 2002).

The southern limit used in the present analysis, 34°N, was restricted by both the EnS and climate change dataset. Harrison *et al.* (2006) used a coarser 0.5° climate dataset to train their ecological niche model for more southern climate conditions, using a southern limit of 15°N. Such an approach would be difficult to implement in the present methodology because it would entail constructing new environmental strata for the African domain. Despite the more modest southern limit, the results illustrate that even for the more extreme HadCM3-A1 scenario these African strata do not dominate the Iberian Peninsula (Fig. 5), suggesting that the EnS covers the climate conditions projected for Europe until 2080. The EnS acknowledges the environmental heterogeneity of the Mediterranean region, which is defined by 30 EnS strata (Fig. 5).

Discriminant analysis is an appropriate multivariate approach for assigning climate functions to previously determined strata (Bunce *et al.* 1996b). Whilst the variation in Wilks' lambda indicated differences in discriminating power between groups of variables (i.e. temperature being the most

Table 1 Comparison to baseline conditions, summarized across sixteen climate change scenarios (four GCMs and four emissions scenarios). SE = standard error, 95% ll = lower limit, 95% ul = upper limit, T-test = Student's t-test, **significant at 1% level.

<i>Environmental stratum</i>	<i>Mean change</i>	<i>SE</i>	<i>95% ll</i>	<i>95% ul</i>	<i>T test</i>	<i>Significance</i>
Absolute change in 1000 km ²						
Alpine North	18.0	155.7	-58.3	94.3	0.651	
Boreal	-241.7	148.0	-314.2	-169.2	0.000	**
Nemoral	37.3	196.1	-58.8	133.4	0.000	**
Atlantic North	68.1	150.0	-5.4	141.5	0.090	
Alpine South	-132.5	34.4	-149.4	-115.7	0.000	**
Continental	-135.5	172.1	-219.8	-51.2	0.007	**
Atlantic Central	232.1	201.9	133.2	331.1	0.000	**
Pannonian	81.6	115.8	24.9	138.3	0.000	**
Lusitanian	-91.3	65.0	-123.1	-59.4	0.000	**
Mediterranean Mountains	-106.7	58.4	-135.3	-78.1	0.000	**
Mediterranean North	177.3	101.6	127.5	227.1	0.000	**
Mediterranean South	84.0	84.1	42.8	125.2	0.000	**
Relative change (%)						
Alpine North	5.6	48.8	-18.3	29.5	0.651	
Boreal	-27.9	17.1	-36.3	-19.5	0.000	**
Nemoral	6.1	32.1	-9.6	21.8	0.000	**
Atlantic North	20.9	46.2	-1.7	43.6	0.090	
Alpine South	-53.3	13.9	-60.1	-46.5	0.000	**
Continental	-11.8	15.0	-19.2	-4.5	0.007	**
Atlantic Central	41.4	36.0	23.7	59.0	0.000	**
Pannonian	20.7	29.4	6.3	35.1	0.000	**
Lusitanian	-42.3	30.1	-57.1	-27.5	0.000	**
Mediterranean Mountains	-30.8	16.9	-39.1	-22.6	0.000	**
Mediterranean North	30.2	17.3	21.7	38.6	0.000	**
Mediterranean South	28.1	28.1	14.3	41.9	0.000	**

Table 2 Mean statistics for growing season, grain yield (Ewert *et al.* 2005), relative proportion of cereal crops (Eurostat NewCronos) and the relative area of two types of potential natural vegetation (Bohn *et al.* 2000) for the ten strata projected to occur in the Swedish sample region (see Supplementary material at http://www.ncl.ac.uk/icef/EC_Supplement.htm for key to strata). – = no data available.

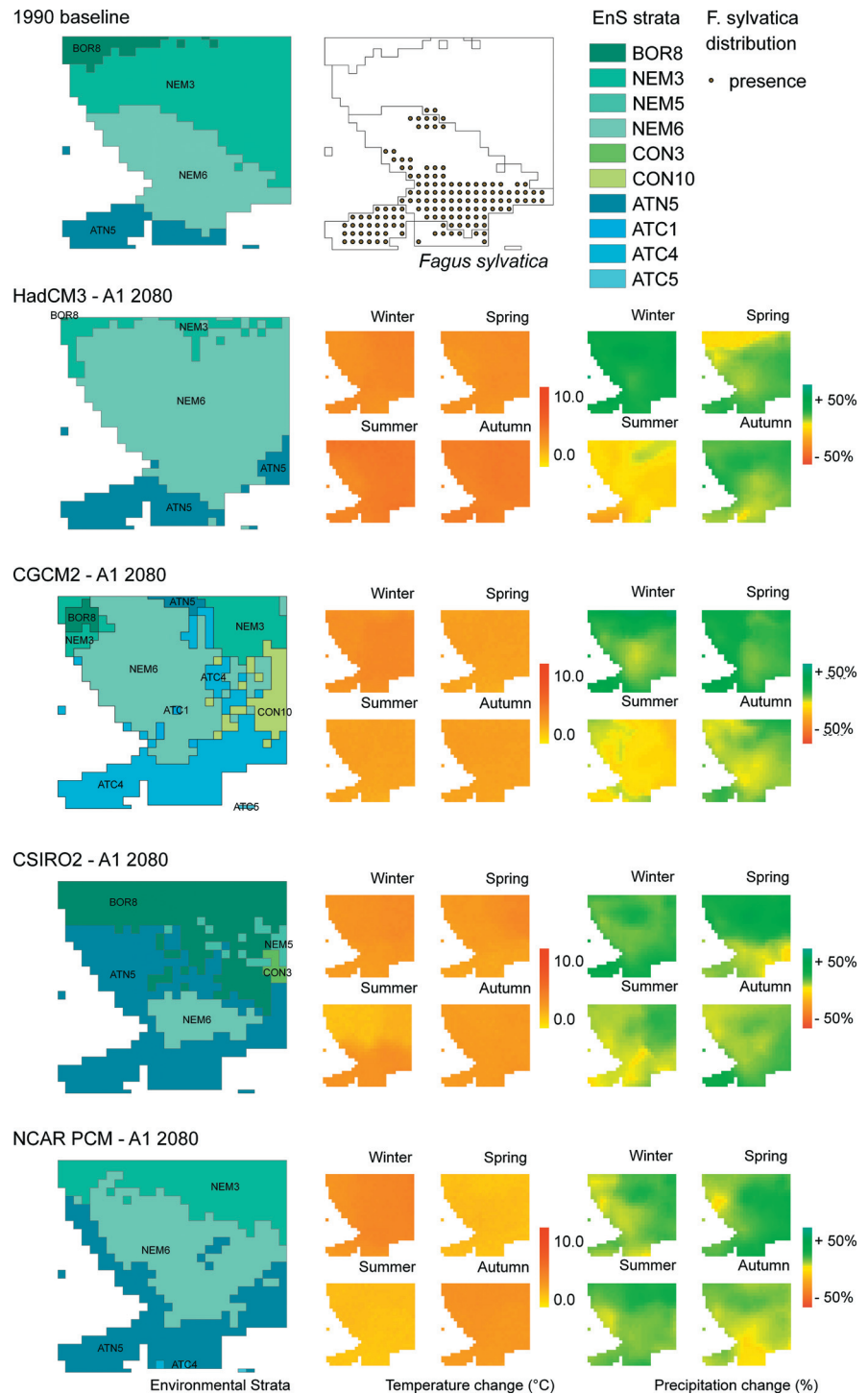
<i>EnS stratum</i>	<i>Growing season (days > 10°)</i>	<i>Grain yield (t ha⁻¹)</i>	<i>% cover of cereal area</i>		<i>% cover of total area</i>	
			<i>Wheat</i>	<i>Oats</i>	<i>PNV deciduous</i>	<i>PNV coniferous</i>
BOR8	177	4.24	19	31	0	93
NEM3	190	5.28	22	32	4	80
NEM5	204	6.5	24	26	39	45
NEM6	201	6.71	26	28	3	71
CON3	213	6.05	–	–	8	11
CON10	220	6.5	–	–	9	4
ATN5	226	7.2	43	2	1	0
ATC1	327	8.05	26	6	9	0
ATC4	270	7.23	64	2	0	0
ATC5	299	6.63	62	1	8	0

discriminating, followed by cloud cover and precipitation), the group means were significant for all variables, indicating that they also contribute to the function. Therefore, all variables were included in the discriminant analysis. Because misplaced grid cells occur mainly in strata which are relatively similar in climate properties, the implications for the interpretation of the results are limited.

One assumption in the current approach of shifting environments is that, while environments can shift, the

relative climate profiles of the environments remain unchanged. The box plots (Fig. 3) show that this is not the case for temperature. In 2080, EnS strata are about 2°C warmer than under baseline conditions and the model is not sensitive to such small changes in temperature compared to more stable precipitation and cloud cover regimes. This is important in regions where environments do not shift, such as the British sample area (see Supplementary material at http://www.ncl.ac.uk/icef/EC_Supplement.htm). While at

Figure 7 Shifting environments and climate change in the Swedish sample region and the current distribution of *Fagus sylvatica* (Köble & Seufert 2001).



a European scale potential impacts in such regions are likely to be relatively minor, higher temperatures are significant at regional scales. For example, in Britain butterfly species have recently migrated northwards (Hill *et al.* 1999) and larger numbers of migrating butterflies, including species considered as pests, are expected (Sparks *et al.* 2005). A synthesis of UK research related to climate change and biodiversity conservation is available from www.ukcip.org.uk.

The analyses presented refer to environmental shifts, but are based on climate change scenarios only. As such, they could be misinterpreted. Whilst at a European scale environment is largely determined by climate (Metzger *et al.* 2005a), other important elements are independent, such as conurbations. Those that have a strong relationship with climate (for example potential natural vegetation and plant productivity) may be expected to change under projected shifts, but the independent elements are likely to be stable

(for example many soils and urban structures). It is important to combine insights in climate shifts with ancillary information when assessing potential impacts for a specific region or issue. In the Swedish sample region (Fig. 7) there was a strong coincidence between land use and soil type. The acidic soils associated with the Scandinavian shield are dominated by forest cover, which limits the potential expansion of agriculture. Furthermore, agricultural expansion is unlikely when at a European scale agricultural land may be taken out of production, as suggested by alternative land-use change scenarios (Rounsevell *et al.* 2006). Regional soil conditions, land-use dynamics, competition and vegetation succession for colonizing deciduous species must all be considered; it is thus unlikely that deciduous tree species will be able to expand as rapidly as the shifting EnS strata indicate. The main conclusion for this sample region is therefore that climate change may exert a positive influence on agricultural and forestry production. However, from a European perspective, climate change is not likely to cause major shifts in land use or habitats in the region.

While the environmental shifts (Fig. 4) provided a condensed summary of projected shifts between EnZs, the 84 shifting EnS strata can be used as a statistical model to determine potential changes in ecological resources. EnS strata can be combined with agricultural statistics to make simple estimates of yield changes resulting from climate change (Ewert *et al.* 2005, 2006). Similarly, the shifting strata have been used to determine changes in potential vegetation structure (Verboom *et al.* 2007). The dataset can also be used to assess changes in species distribution, especially for taxa at the edge of their range and where pools of more southern species are available for expansion. In this respect, islands such as Great Britain could be protected from rapid invasion of new species. While such models are less sophisticated than those constructed for one specific aim, they do provide clear information about projected climate shifts, including variability between climate change projections from multiple GCMs. When considerable uncertainty exists as to how the climate system will change, further investment in more complex modelling may not improve results.

Perhaps the most useful application of the shifting EnS strata is the option to combine insights into climate change with ancillary datasets and expert knowledge, thus linking landscape and biogeographical scales (Fig. 6; Supplementary material at http://www.ncl.ac.uk/iccf/EC_Supplement.htm). In our examples, the ancillary data was limited to relatively few European datasets. When available, detailed regional datasets (for example for soil, species distribution and land use), field observations and local knowledge can be used to make more detailed assessments. Standard GIS operations can then be used to make regional scenarios, useful for evaluating regional or national physical planning and nature conservation. Such analyses can be extended to more complex modelling of meta-population behaviour and habitat change (Opdam & Wascher 2004). Local effects of climate change on species distribution can be explored by

integrating different models in a scale-dependant hierarchical framework, linking bioclimate niche models to land use and species dispersal models (Del Barrio *et al.* 2006). Similar approaches could be developed by linking shifting strata with dispersal models (Verboom *et al.* 2007). Such regional studies could be of interest to regional or national governments or non-governmental organizations (Del Barrio *et al.* 2006). Alternatively, by selecting representative sites across Europe, impacts on European habitats could be evaluated, or sample regions could be linked to socioeconomic scenarios describing different changes in demand (see Rounsevell *et al.* 2006). Consistent detailed global change scenarios could also be developed for selected regions across Europe.

CONCLUSIONS

The shifting EnS strata provide a convenient summary of the climate change scenarios. Monthly values for multiple parameters are summarized in classes with similar climate profiles. The results show that the dataset of shifting environmental strata conveniently summarizes contemporary knowledge about climate change in Europe. As such, it can be applied in simple modelling exercises, or in combination with ancillary data, to hypothesize potential change in ecological resources. The approach has the potential to facilitate a series of innovative approaches.

ACKNOWLEDGEMENTS

This work was carried out as part of the vulnerability assessment of the EU-funded Fifth Framework project ATEAM (Advanced Terrestrial Ecosystem Assessment and Modelling, Project No. EVK2-2000-00075). BSIK KvR project A-12 funded by Dutch Ministry for Agriculture, Nature and Food Security supported additional work. We especially thank the anonymous reviewers, whose constructive comments greatly improved the quality of the manuscript.

References

- Bohn, U., Gollub, G. & Hettwer, C. (2000) *Karte der natürlichen Vegetation Europas: Maßstab 1:2.500.000*. Bon-Bad Godesberg, Germany: Bundesamt für Naturschutz.
- Bunce, R.G.H., Barr, C.J., Clarke, R.T., Howard, D.C. & Lane, A.M.J. (1996a) ITE Merlewood land classification of Great Britain. *Journal of Biogeography* 23: 625–634.
- Bunce, R.G.H., Carey, P.D., Elena-Rosello, R., Orr, J., Watkins, J. & Fuller, R. (2002) A comparison of different biogeographical classifications of Europe, Great Britain and Spain. *Journal of Environmental Management* 65: 121–134.
- Bunce, R.G.H., Metzger, M.J., Jongman, R.H.G., Brandt, J., De Blust, G., Elena-Rosello, R., Groom, G.B., Halada, L., Hofer, G., Howard, D.C., Kovar, P., Múcher, C.A., Padoa-Schioppa, E., Palinckx, D., Palo, A., Perez-Soba, M., Ramos, I.L., Roche, P., Skånes, H. & Wrbka, T. (2008) A standardized procedure for surveillance and monitoring of European habitats and provision of

- spatial data. *Landscape Ecology* (in press) DOI: 10.1007/s10980-007-9173-8
- Bunce, R.G.H., Watkins, J.W. & Gillespie, M.K. (1996b) The Cairngorm environment in a European context and the potential for change. *Botanical Journal of Scotland* **48**: 127–135.
- Bunce, R.G.H., Watkins, J.W., Brignall, P. & Orr, J. (1996c) A comparison of the environmental variability within the European Union. In: *Ecological and Landscape Consequences of Land Use Change in Europe*, ed. R.H.G. Jongman, pp. 82–90. Tilburg, the Netherlands: European Centre for Nature Conservation.
- Del Barrio, G., Harrison, P.A., Berry, P.M., Butt, N., Sanjuan, M.E., Pearson, R.G. & Dawson, T. (2006) Integrating multiple modelling approaches to predict the potential impacts of climate change on species' distributions in contrasting regions: comparison and implications for policy. *Environmental Science and Policy* **9**: 129–147.
- EEA (2004) *Impacts of Europe's Changing Climate. An Indicator-based Assessment*. EEA Report No. 2/2004. Copenhagen, Denmark: European Environment Agency.
- ESRI (2002) *ArcGIS 8.2*. Redlands, California: Environmental Systems Research Incorporated.
- Ewert, F., Rounsevell, M.D.A., Reginster, I., Metzger, M.J. & Leemans, R. (2005) Future scenarios of European agricultural land use. I: Estimating changes in crop productivity. *Agriculture, Ecosystems and Environment* **107**: 101–116.
- Ewert, F., Rounsevell, M., Reginster, I., Metzger, M. & Leemans, R. (2006) Technology development and climate change as drivers of future agricultural land use. In: *Agriculture and Climate Beyond 2015*, ed. F. Brouwer & B. McCarl, pp. 33–51. Dordrecht, the Netherlands: Springer Academic Publishers.
- Fisher, R.A. (1936) The use of multiple measurements in taxonomic problems. *Annals of Eugenics* **8**: 376–386.
- Harrison, P.A., Berry, P.M., Butt, N. & New, M. (2006) Modelling climate change impacts on species' distributions at the European scale: implications for conservation policy. *Environmental Science and Policy* **9**: 116–128.
- Hill, J.K., Thomas, C.D. & Huntley, B. (1999) Climate and habitat availability determine 20th century changes in butterfly's range margin. *Proceedings of the Royal Society of London B* **266**: 1197–1206.
- Hulme, M., Conway, D., Jones, P.D., Jiang, T., Barrow, E.M. & Turney, C. (1995) Construction of a 1961–90 European climatology for climate change modelling and impact applications. *International Journal of Climatology* **15**: 1333–1363.
- IMAGE Team (2001) *The IMAGE 2.2 Implementation of the SRES Scenarios: a Comprehensive Analysis of Emissions, Climate Change and Impacts in the 21st Century*. Bilthoven, the Netherlands: National Institute of Public Health and the Environment (RIVM).
- IPCC (2001) *Climate Change 2001: The Scientific Basis. Contribution of Working Group I to the Third Assessment Report of the Intergovernmental Panel on Climate Change (IPCC)*. Cambridge UK: Cambridge University Press.
- IPCC (2007a) *Climate Change 2007: The Physical Science Basis. Contribution of Working Group I to the Fourth Assessment Report of the Intergovernmental Panel on Climate Change (IPCC)*. Cambridge, UK: Cambridge University Press.
- IPCC (2007b) Summary for Policymakers. In: *Climate Change 2007: Impacts, Adaptation and Vulnerability. Contribution of Working Group II to the Fourth Assessment Report of the Intergovernmental Panel on Climate Change (IPCC)*. Cambridge, UK: Cambridge University Press.
- Jongman, R.H.G., Bunce, R.G.H., Metzger, M.J., Múcher, C.A., Howard, D.C. & Mateus, V.L. (2006) Objectives and applications of a statistical environmental stratification of Europe. *Landscape Ecology* **21**: 409–419.
- Köble, R. & Seufert, G. (2001) Novel maps for forest tree species in Europe. Proceedings of the 8th European Symposium on the Physico-Chemical Behaviour of Air Pollutants: A Changing Atmosphere!, Torino, Italy, 17–20 September 2001[www document]. URL http://ccu.jrc.it/Publications/tree_species_maps.pdf
- Leemans, R., Cramer, W.P. & van Minnen, J.G. (1996) Prediction of global biome distribution using bioclimatic equilibrium models. In: *Effects of Global Change on Coniferous Forests and Grasslands*, ed. J.M. Melillo & A. Breymer, pp. 413–450. New York, USA: J. Wiley and Sons.
- McLachlan, G.J. (1992) *Discriminant Analysis and Statistical Pattern Recognition*. New York, USA: John Wiley and Sons.
- Metzger, M.J. & Schröter, D. (2006) Towards a spatially and quantitative vulnerability assessment of environmental change in Europe. *Regional Environmental Change* **6**: 201–216.
- Metzger, M.J., Bunce, R.G.H., Jongman, R.H.G., Múcher, C.A. & Watkins, J.W. (2005a) A climatic stratification of the environment of Europe. *Global Ecology and Biogeography* **14**: 549–563.
- Metzger, M.J., Leemans, R. & Schröter, D.S. (2005b) A multi-disciplinary multi-scale framework for assessing vulnerability to global change. *International Journal of Applied Geo-information and Earth Observation* **7**: 253–267.
- Mitchell, T.D., Carter, T.R., Jones, P.D., Hulme, M. & New, M. (2004) A comprehensive set of high-resolution grids of monthly climate for Europe and the globe: the observed record (1901–2000) and 16 scenarios (2001–2100). Tyndall Centre Working Paper No. 55. Tyndall Centre for Climate Change Research, University of East Anglia, Norwich, UK.
- Múcher, C.A., Champeaux, J.L., Steinnocher, K.T., Griguolo, S., Wester, K., Heunks, C., Winiwater, W., Kressler, F.P., Goutorbe, J.P., ten Brink, B., van Katwijk, V.F., Furberg, O., Perdigao, V. & Nieuwenhuis, G.J.A. (2001) *Development of a Consistent Methodology to Derive Land Cover Information on a European Scale from Remote Sensing for Environmental Monitoring: the PELCOM Report*. Wageningen, the Netherlands: Alterra Green World Research.
- Nakicenovic, N., Alcamo, J., Davis, G., de Vries, B., Fenhann, J., Gaffin, S., Gregory, K., Grübler, A., Jung, T.Y., Kram, T., la Rovere, E.L., Michaelis, L., Mori, S., Morita, T., Pepper, W., Pitcher, H., Price, L., Riahi, K., Roehrl, A., Rogner, H.-H., Sankovski, A., Schlesinger, M., Shukla, P., Smith, S., Swart, R., van Rooyen, S., Victor, N. & Dadi, Z. (2000) *IPCC Special Report on Emissions Scenarios (SRES)*. Cambridge, UK: Cambridge University Press.
- New, M., Lister, D., Hulme, M. & Maken, I. (2002) A high-resolution dataset of surface climate over global land areas. *Climate Research* **21**: 1–25.
- Opdam, P. & Wascher, D. (2004) Climate change meets habitats fragmentation: linking landscape and biogeographical scale levels in research and conservation. *Biological Conservation* **117**: 285–297.
- Prentice, I.C., Cramer, W., Harrison, S.P., Leemans, R., Monserud, R.A. & Solomon, A.M. (1992) A global biome model based on plant physiology and dominance, soil properties and climate. *Journal of Biogeography* **19**: 117–134.
- Reid, W.V., Mooney, H.A., Cropper, A., Capistrano, D., Carpenter, S.R., Chopra, K., Dasgupta, P., Dietz, T., Duraiappah, A.K., Hassan, R., Kasperson, R., Leemans, R., May, R.M., McMichael,

- A.J., Pingali, P., Samper, C., Scholes, R., Watson, R.T., Zakri, A.H., Shidong, Z., Ash, N.J., Bennett, E., Kumar, P., Lee, M.J., Raudsepp-Hearne, C., Simons, H., Thonell, J. & Zurek, M.B. (2005) *Millennium Ecosystem Assessment Synthesis report*. Washington, DC, USA: Island Press.
- Rounsevell, M.D.A., Reginster, I., Araújo, M.B., Carter, T.R., Dendoncker, N., Ewert, F., House, J.I., Kankaanpää, S., Leemans, R., Metzger, M.J., Schmit, C., Smith, P. & Tuck, G. (2006) A coherent set of future land use change scenarios for Europe. *Agriculture Ecosystems and Environment* **114**: 57–68.
- Ruosteenoja, K., Carter, T.R., Jylhä, K. & Tuomenvirta, H. (2003) *Future Climate in World Regions: an Intercomparison of Model-based Projections for the New IPCC Emissions Scenarios*. The Finnish Environment 644. Helsinki, Finland: Finnish Environment Institute.
- Sabaté, S., Gracia, C.A. & Sánchez, A. (2002) Likely effects of climate change on growth of *Quercus ilex*, *Pinus halepensis*, *Pinus pinaster*, *Pinus sylvestris* and *Fagus sylvatica* forests in the Mediterranean region. *Forest Ecology and Management* **162**: 23–37.
- Schröter, D., Cramer, W., Leemans, R., Prentice, I.C., Araújo, M.B., Arnell, N.W., Bondeau, A., Bugmann, H., Carter, T.R., Garcia, C.A., de la Vega-Leinert, A.C., Erhard, M., Ewert, F., Glendinning, M., House, J.I., Kankaanpää, S., Klein, R.J.T., Lavorel, S., Lindner, M., Metzger, M.J., Meyer, J., Mitchell, T.D., Reginster, I., Rounsevell, M., Sabaté, S., Sitch, S., Smith, B., Smith, J., Smith, P., Sykes, M.T., Thonicke, K., Thuiller, W., Tuck, G., Zaehle, S. & Zierl, B. (2005) Ecosystem service supply and human vulnerability to global change in Europe. *Science* **310**: 1333–1337.
- Sitch, S., Smith, B., Prentice, I.C., Arneth, A., Bondeau, A., Cramer, W., Kaplan, J.O., Levis, S., Lucht, W., Sykes, M.T., Thonicke, K. & Venevsky, S. (2003) Evaluation of ecosystem dynamics, plant geography and terrestrial carbon cycling in the LPJ Dynamic Vegetation Model. *Global Change Biology* **9**: 161–185.
- Sparks, T.H., Roy, D.B. & Dennis, R.L.H. (2005) The influence of temperature on migration of Lepidoptera into Britain. *Global Change Biology* **11**: 507–514.
- SPSS (2001) *SPSS Version 11.0*. Chicago, USA: SPSS.
- Tchebakova, N.M., Monserud, R.A., Leemans, R. & Golovanov, S. (1993) A global vegetation model based on the climatological approach of Budyko. *Journal of Biogeography* **20**: 219–244.
- Thuiller, W., Lavorel, S., Araújo, M.B., Sykes, M.T. & Prentice, I.C. (2005) Climate change threats to plant diversity in Europe. *Proceedings of the National Academy of Sciences of the United States of America* **102**: 8245–8250.
- Verboom, J., Alkemade, L.R.M., Klijn, J., Metzger, M.J. & Reijnen, R. (2007) Combining biodiversity modelling with political and economic development scenarios for 25 EU countries. *Ecological Economics* **62**: 267–276.
- Viner, D. (2002) A qualitative assessment of the sources of uncertainty in climate change impacts assessment studies: a short discussion paper. *Advances in Global Change Research* **10**: 139–151.