

January 2-6, 1990

Hawaii, USA

Obstetrics, Gynecology, Perinatal Medicine and the Law (expanded to include Emergency Medicine, Anesthesiology and Surgery). The American Society of Law & Medicine and co-sponsored by the Postgraduate Medical Institute. Fee: \$520. Contact: American Society of Law & Medicine, Suite 150, GPM Building, San Antonio, TX 78216-5674, USA; 512/341-8131.

January 6, 1990

Johnson City, New York, USA

Prehospital Medical Command Course for Physicians. Sponsored by United Health Services. Fee: \$100-\$200. Contact: James DellaValle, MD, 33-57 Harrison St., Johnson City, NY 13790, USA; 607/770-6311.

January 20-27, 1990

Kona, Hawaii, USA

Update: Controversies in Emergency & Primary Care. American Institute of Postgraduate Education and Scripps Memorial Hospital, Encinitas. Fee: \$395. Contact: American Institute of Postgraduate Education, P.O. Box 2586, La Jolla, CA 92038, USA; 619/454-3212.

February 1-2, 1990

Long Beach, California, USA

Advanced Pediatric Emergencies: The First Three Hours. Sponsored by the University of California, Irvine, Center for Health Education. Contact: Memorial/UCI, Center for Health Education, 2801 Atlantic Ave., P.O. Box 1428, Long Beach, CA 90801-1428, USA; 213/595-3811.

February 1-3, 1990

San Diego, California, USA

13th Annual: Neurology for Non-Neurologists. The University of California, San Diego, School of Medicine and Neurology for Non-Neurologists Foundation. Fee: \$400. Contact: Edith S. Bookstein/WMW, P.O. Box 2586, La Jolla, CA 92038, USA; 619/454-3212.

February 9-10, 1990

Orlando, Florida, USA

Trauma Update: Managing the Critically Injured Victim. Sponsored by Resource Apps, Inc. Fee: \$185-\$225. Contact: Resource Apps, Inc., 7250 Parkway Dr., Hanover, MD 21076, USA; 301/796-9010.

February 10-17, 1990

Showbird, Utah, USA

Pediatric Trauma. American Institute of Postgraduate Education and Scripps Memorial Hospital, Encinitas. Fee: \$395. Contact: American Institute of Postgraduate Education, P.O. Box 2586, La Jolla, CA 92038, USA; 619/454-3212.

February 11-16, 1990

Harbor Springs, Michigan, USA

Fifteenth Annual Seminar on Emergencies in Medicine. Sponsored by Detroit Receiving Hospital. Contact: Robert F. Wilson, MD, FACS, Department of Surgery, Detroit Receiving Hospital, 4201 St. Antoine, Detroit, MI 48201, USA; 313/745-3484.

February 14-17, 1990

Tucson, Arizona, USA

Eight Annual EMS Today Conference and Exposition. Sponsored by JEMS Publishing Company and The Conference Corporation. Contact: The Conference Corporation, P.O. Box 805, Solana Beach, CA 92075, USA; 619/481-5267.

February 17-24, 1990

Sun Valley, Idaho, USA

The 7th Annual Office Based Sports Medicine Conference. University of California School of Medicine, San Francisco. Contact: Extended Programs in Medical Education, Room 569-U, University of California School of Medicine, San Francisco, CA 94143, USA; 415/476-4251.

February 18-21, 1990

San Diego, California, USA

Recent Advances in Geriatric Medicine: Treating the Five Major Causes of Death and Disability in the '90's. Sponsored by the University of California, San Diego. Fees: \$325—Physicians, \$225—Allied Health/Residents. Contact: Cass Jones, Professional Conference Management, Inc., 7916 Convoy Court, San Diego, CA 92111, USA; 619/565-9921.

February 18-25, 1990

Lake Tahoe, Nevada, USA

Emergencies in Internal Medicine—13th Annual UCD Winter Conference. Sponsored by the Office of Continuing Medical Education and Division of Emergency Medicine. Fees: \$410—Physicians, \$310—Others. Contact: Nina Musselman, Office of Continuing Medical Education, UC Davis School of Medicine, 2701 Stockton Blvd., Sacramento, CA 95817, USA; 916/453-5390.

February 19-23, 1990

San Diego, California, USA

Physician Heal Thyself. Sponsored by University of California, San Diego. Fees: \$350—Physicians, \$200—Allied Health/Residents. Contact: Office of Continuing Medical Education, UC San Diego School of Medicine, M-017, La Jolla, CA 92093-0617, USA; 619/534-3940.

February 22-24, 1990

Lake Buena Vista, Florida, USA

Emergency Medicine for the Critically Ill and Injured. Sponsored by Orlando Regional Medical Center. Contact: Continuing Medical Education Office, Orlando Regional Medical Center, 1414 Kuhl Ave., Orlando, FL 32806, USA; 800/648-0450.

February 24 to March 3, 1990

Mau, Hawaii, USA Wound Management.

American Institute of Postgraduate Education and Scripps Memorial Hospital, Encinitas. Fee: \$395. Contact: American Institute of Postgraduate Education, P.O. Box 2586, La Jolla, CA 92038, USA; 619/454-3212.

March 11-16, 1990

Park City, Utah, USA

Emergencies in Medicine. Sponsored by Detroit Receiving Hospital. Contact: Robert F. Wilson, MD, FACS, Department of Surgery, Detroit Receiving Hospital, 4201 St. Antoine, Detroit, MI 48201, USA; 313/745-3484.

March 18-20, 1990

Baltimore, Maryland, USA

12th National Trauma Symposium. Sponsored by Maryland Institute for Emergency Medical Services Systems. Contact: MIEMSS, Department of International Development, 11 S. Poca St., Ste. 303, Baltimore, MD 21201, USA; 301/328-2399.

March 22-24, 1990

San Diego, California, USA

Medicine Today for Nurses. Sponsored by the University of California, San Diego. Fee: \$150. Contact: Office of Continuing Medical Education, UC San Diego School of Medicine, M-017, La Jolla, CA 92093-0617, USA; 619/534-3940.

March 24-27, 1990

Oak Ridge, Tennessee, USA

Handling of Radiation Accidents by Emergency Personnel. Sponsored by the Oak Ridge Association of Universities. Contact: M.E. Berger, REAC/TS, P.O. Box 117, Oak Ridge, TN 37831-0117, USA; 615/576-3131.

March 29-30, 1990

Columbus, Ohio, USA

Trauma Update: Managing the Critically Injured Victim. Sponsored by Resource Apps, Inc. Fee: \$185-\$225. Contact: Resource Apps, Inc., 7250 Parkway Dr., Hanover, MD 21076, USA; 301/796-9010.

April 5-7, 1990

San Antonio, Texas, USA

Quality Assurance and Risk Management. Sponsored by the American College of Emergency Physicians. Fee: \$225-\$570. Contact: American College of Emergency Physicians, Registrar, P.O. Box 619911, Dallas, TX 75261-9911, USA; 214/550-0911.

April 7-14, 1990

Kauai, Hawaii, USA

Cardiopulmonary Emergencies. American Institute of Postgraduate Education and Scripps Memorial Hospital, Encinitas. Fee: \$395. Contact: American Institute for Postgraduate Education, P.O. Box 2586, La Jolla, CA 92038, USA; 619/454-3212.

April 23-27, 1990

Hilton Head, South Carolina, USA

Current Clinical Pediatrics. Sponsored by: Boston University School of Medicine. Fee: \$400—Physicians, \$310—Residents. Contact: Boston University School of Medicine, Department of Continuing Medical Education, 80 E. Concord, Boston, MA 02118-2394, USA; 617/638-4605.

April 28-29, 1990

La Jolla, California, USA

The Cutting Edge 1990—The Heart of the Matter: Helping Improve Relationships. Sponsored by the University of California, San Diego. Fees: \$300—Physicians, \$200—Allied Health/Residents. Contact: Cass Jones, Professional Conference Management, Inc., 7916 Convo Court, San Diego, CA 92111, USA; 619/565-9921.

May 16-20, 1990

San Diego, California, USA

Twelfth Annual: Wound Management Workshop. The University of California, San Diego, School of Medicine and The Plastic Surgery Research Foundation. Contact: Edith S. Bookstein/WMW, P.O. Box 2586, La Jolla, CA 92038, USA; 619/454-3212.

May 21-24, 1990

Minneapolis, Minnesota, USA

The Annual Meeting of the Society for Academic Emergency Medicine. Contact: Society for Academic Emergency Medicine Annual Meeting, 900 W. Ottawa St., Lansing, MI 48915-1794, USA; 517/485-5484.

May 28 to June 1, 1990

Sonesta Beach, Massachusetts, USA

Musculoskeletal MRI for Orthopedists and Radiologists. Sponsored by Boston University School of Medicine. Fee: \$350. Contact: Boston University School of Medicine, Department of Continuing Medical Education, 80 E. Concord, Boston, MA 02118-2394, USA; 617/638-4605.

June 1-4, 1990

Baltimore, Maryland, USA

2nd Annual Trauma Anesthesia and Critical Care Symposium. Sponsored by the Maryland Institute for Emergency Medical Services Systems. Contact: MIEMSS, Department of International Development, 11 S. Paca St., Suite 303, Baltimore, MD 21201, USA; 301/328-2399.

June 7-9, 1990

Kansas City, Missouri, USA

Controversies in Internal Medicine. Sponsored by Boston University School of Medicine. Fee: \$150—Physicians, \$50—Residents. Contact: Boston University School of Medicine, Department of Continuing Medical Education, 80 E. Concord, Boston, MA 02118-2394, USA; 617/638-4605.

June 13-17, 1990

Houston, Texas, USA

The 1990 Meeting of the National Association of EMS Physicians. Contact: Kathleen M. Stage, National Association of EMS Physicians, 230 McKee Place, Suite 500, Pittsburgh, PA 15213, USA; 800/228-3677.

June 25-29, 1990

Stockholm, Sweden

Second International Conference: Wartime Medical Services. Contact: Wartime Medical Services, IFS Institute for Hospital Planning, Ostermalmsgatan 33, S-II426, Stockholm, Sweden; (+ 46) 823-0435.

July 20-22, 1990

Crested Butte, Colorado, USA

1990 American In-Vitro Allergy/Immunology Society Scientific Program. Fees: \$210-\$260—Physicians, \$160-\$190—Allied Health. Contact: Betty Kahler, P.O. Box 459, Lake Jackson, TX 77566, USA; 409/297-5636 or 409/297-7089.

October 11-13, 1990

San Diego, California, USA

Medicine Today for Nurses. Sponsored by the University of California, San Diego. Fee: \$150. Contact: Office of Continuing Medical Education, UC San Diego School of Medicine, M-017, La Jolla, CA 92093-0617, USA; 619/ 534-3940.

October 18-20, 1990

Pittsburgh, Pennsylvania, USA

International Congress on Emergency and Disaster Medicine. Center for Emergency Medicine and the University of Pittsburgh Center for Continuing Education for the Health Sciences. Contact: University of Pittsburgh, Division of Conference Management, 200 Meyran Ave., 1st Floor, Pittsburgh, PA 15213, USA; 412/ 624-1023.

LIFE SUPPORT SYSTEM.

Car crashes. Trauma patients. Insulin shock. These are only a few emergencies EMS personnel must be able to deal with, in most cases with only a split second to decide what the correct procedure is. That's where we come in. We're Emergency Medical Update, and we'll help make those split second decisions easier to face.

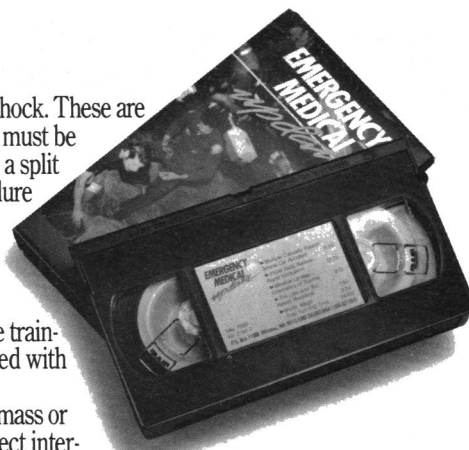
As a subscriber, you'll receive valuable training from a monthly videotape that's packed with all kinds of demonstrations and reports.

Tapes contain on-the-scene footage of a mass or multiple casualty incident, including direct interviews with the responders who were there. Learn what did and didn't work for them.

We'll demonstrate new skills, like intraosseous infusion, or EMT defibrillation.

Certified instructors will show you correct procedures, from patient assessment to ambulance operation. We also cover new medical and legal developments that could affect you.

So subscribe to Emergency Medical Update today. It'll take you a split second to decide you did the right thing.



Yes, I'm interested. Please send me more information on Emergency Medical Update.

Name _____

Title / Organization _____

Address _____

City State, Zip _____

Phone # _____

**EMERGENCY
MEDICAL
update**

P.O. Box 11380 • Winslow, WA 98110-5380 • 1-800-327-3841 • (206) 842-8454

Calendar selections are based on space availability, national appeal and appropriateness to our audience. *Prehospital and Disaster Medicine* welcomes information about continuing education programs that are designed to help emergency and trauma physicians, nurses and paramedics in the management of critically ill or injured patients. To list a meeting, send the details at least four months in advance to: PDM, Jems Publishing Co., P.O. Box 1026, Solana Beach, CA 92075.

One Great Reason to Attend EMS Today

Building a Better Medical Director: A Systems Approach

A two-day seminar held in conjunction with the EMS Today Conference.

This seminar was designed for you, the physician and administrator, to show you how to set up indirect and direct medical control through 10 lectures and two participative exercises. This is the course that wasn't included in your medical school curriculum.

How are you going to supervise what the EMTs and paramedics are doing in the field when you're not really sure how they do it? If somebody else is signing their paychecks (like the fire chief), how much control can you really have? How can you assure the quality of prehospital care?

It is important for medical directors to have a thorough understanding of EMS operations and the politics of building an EMS system.

Over the two days, you will learn how to:

- Understand the various EMS system designs, including which one is best for your area, and why.
- Work up a quality assurance program for your service.
- Set up quality research and evaluation programs.
- Design specialty referral systems, and how to use them properly.
- Identify proper vehicle operations and patterns of deployment.
- Distinguish different communications systems operating today.
- Know the inner workings of medevac and aeromedical services.
- Research your medico-legal responsibilities and authority.
- Get a bad medic off the street.
- Be familiar with direct and indirect medical control systems.

The two-day course is based on the National Association of EMS Physician's "EMS Medical Director's Handbook," the new release by C.V. Mosby.

The faculty combined has over 100 years of experience in medical direction. The session is moderated by Dr. Sandy Kuehl, formerly the medical director for New York City. Dr. Kuehl will be joined by:

- Jeff Clawson, MD, Medical Director, Salt Lake City, (Utah) Fire Dept. and pioneer of the Priority Medical Dispatch System.
- Norm Dinerman, MD, Chief of Emergency Medicine, Eastern Maine Medical Center and former EMS director.
- Jack Stout, President, The Fourth Party, designer of innovative EMS systems throughout the U.S.
- Richard Slevinski, MD, Co-Medical Director for Florida, Director of Emergency Services for two hospitals in Pensacola, and Treasurer of Florida ACEP.

Medical Direction & Leadership Track

EMS Today has a track designed specifically for the medical director.

With four distinct programs, covering important administrative topics, this track is sure to be one of the highlights of the conference.

Confessions of a New Medical Director

Presented by Ray Fowler, MD

What will the reality of EMS be in the 90's? What leadership will be needed by medical directors to move prehospital medicine to meet new healthcare challenges? Among the subjects discussed will be:

- the varying criteria organizations use in choosing a medical director.
- the stress (and limitations) of being a part-time medical director and full-time practicing physician.
- how to implement a quality assurance program and demand accountability.

Current Controversies in the Air Medical Services

Presented by Nicholas Benson, MD

Virtually every level of prehospital and critical care provider and administrator is involved with aeromedical services and nearly everyone has an opinion about their usefulness. This session will bring everyone up-to-date on the latest research, trends and utilization patterns.

Included in the session will be a discussion of the importance of the post-flight review of utilization, as well as specific patient care issues such as the aeromedical transportation of patients with acute myocardial infarctions and high-risk obstetric patients.

Budget Control vs. Medical Control

Presented by Paul E. Pepe, MD

EMS is a unique form of medical practice. Because it is also a public service, it is subject to fiscal constraints, constant media scrutiny, and even significant political pressures. This session will examine the relative balance between quality administrative budget control of prehospital medical services and, in turn, will offer some practical suggestions for effecting a strong partnership between the physician and the administrative managers of EMS systems.

Making the Most of Impression Opportunities

Presented by Norm Dinerman, MD and Jim Page

If you've ever been "put off" by a bored store clerk, or upset by a rude waiter, you know just how important the impression is to a customer. What kind of impressions do EMS personnel make on their "customers?" In this session, the speakers will walk through some typical emergency health care situations and identify impression opportunities you may never have thought of.

For Registration Information See Next Page

11 More Reasons to Vi

Even preconference and post-conference workshops set EMS Today apart from other conferences.

We introduced preconference workshops in 1983 and the post-conference workshop this year to give participants an opportunity to learn special skills and gain hands-on experience in focused areas. The preconference workshops have since become one of our most popular features.

This year we offer the most diverse selection in our history -- 11 workshops to meet the needs of every member of the EMS team. These workshops can be attended separately, or in conjunction with the regular EMS Today conference.

Join over 1,000 of your peers in sunny Tucson this February for four days of education and inspiration.

and communication, the two most common pitfalls in disaster planning and response, will be dominant topics.

leaves everyone -- patients, providers, and EMS organizations -- healthier and happier. You'll learn methods for self-care -- a skill that enables prehospital providers to meet each new patient with a fresh outlook and open mind.

1 Creating an Effective Quality Assurance Program

Presented by Jim Page and Mike Taigman

QA promises to be the buzz word of the 90's in EMS. Never before has so much time and energy been devoted to a topic which so few can define or achieve. This workshop will look at the systems now in place -- most of which are penalty based -- and explore the hows and whys of getting people to think and do quality work because it's good and right.

2 Principles of Disaster Management: Coordination, Communication and Planning

Presented by Erik Auf der Heide, MD

There are many popular misconceptions that can inhibit or undermine effective planning and response. This workshop teaches practical disaster response planning strategies with emphasis on flexibility and organizing and coordinating responses that are applicable to a wide variety of circumstances. Coordination

3 Talking Hands: Communicating with Deaf Patients

Presented by Suzanne Cromlish

Over 20 million people in the United States are hearing impaired. This workshop is designed to make emergency health-care professionals more aware of the world of the deaf and hearing impaired, and give them confidence when working with those handicapped patients. Suzanne Cromlish has been the interpreter for President George Bush, as well as former Presidents Ronald Reagan and Jimmy Carter.

4 Classroom Leadership Strategies for the 90's

Presented by Michael A. Laman

The 1990's is bringing a whole new generation of EMS personnel into the industry. This workshop will teach the EMS instructor effective styles of classroom management, mediation and conflict resolution in the classroom, and how to counsel and coach this new breed of students.

5 Total Patient Care

Presented by Kate Dernocoeur

Total patient care removes participants from the familiar focus of technology and spotlights instead the hugely variable component of people. A well-rounded and balanced approach to this difficult line of work

6 Building a Better Medical Director: A Systems Approach (Two Days)

Moderated by Alexander "Sandy" Kuehl

This workshop will show physicians from all disciplines, who are involved in the direction and provision of

emergency medical services, how to set up indirect and direct medical control through 10 lectures and two participative exercises. The goal will be to develop medical structure for EMS systems.

This is not a "base station" how-to course, but a two-day session designed to help you develop a systems approach to medical direction. ACEP Category 1 CME credits requested.

7 Maximizing Revenue: Options and Actions

Presented by Terry L. Schmidt, Richard Zuschlag and Glenn Comeaux

This workshop will present practical options for both public and private companies, including: basic Medicare reimbursement principles, negotiating payment increases with Medicare, managing and motivating billing office staff and finance concepts for better financial planning. Nothing you do in the next five years will be more important than maximizing your revenue in this topsy-turvy world of health care.



Brian Halmer

Visit Tucson in February

8 Multi-Casualty Incident Operational Procedures

Presented by D. Raleigh Harris

The problems and complexities of multiple-casualty emergency response can create a recipe for chaos and further disaster if proper command structures, inter-agency agreements and communications are not in place. However, a well-orchestrated and coordinated response can result from the use of the incident command system, which has revolutionized emergency response since its introduction in the early 1970's.

Presented by Bruce Griffiths, MS and Thom Dick, EMT-P

Study after study tells us that the best bosses are people who are good at the "people skills" part of their job. Being an excellent paramedic might lead to a job in supervision, but those technical skills are not enough to allow you to excel as a manager and a motivator. Learn the tools you'll need to be the best you can be in your management position.

Ideas Into Print: Media Access for EMS Professionals (Post-Conference Workshop)

Before you leave EMS Today do yourself a favor and spend Sunday, February 18, 1990, learning from professionals how to write and get published in the EMS industry. Bruce Goldfarb, medical writer and columnist in JEMS,

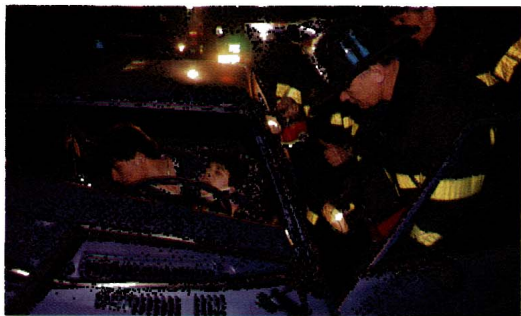
along with the JEMS editorial staff will teach you just what you need to know to become a successful EMS writer.

You'll learn:

- How to develop a marketable article.
- How to find and select publications.
- How to write a query letter that will "sell" an editor on your idea.
- Tips on writing styles for trade and consumer publications.
- How to get started on a manuscript, and see it through to publication.
- How to negotiate compensation.

In addition to writing for publication, this post-conference workshop offers a special session in public relations writing in EMS.

There is a need for talented writers in EMS. Sign up today and get the skills it takes to put your ideas into print.



Michael Kowal

Creating Good Prehospital Research: Designing and Conducting Meaningful Studies in the Prehospital Setting

Presented by Ron Stewart, MD and Jim Dernocoeur, EMT-P

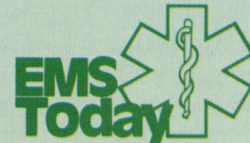
"EMS Saves Lives" continues to be the holy grail of prehospital medicine. By how many lives? Saved from what? At what cost? How are patient outcomes measured? This workshop is designed to give all members of the EMS team the basic tools to understand what constitutes good research and how to recognize the subtle traps of bad research.

Developing Human Resources: Action Management for Supervisors and Managers

10

11

Eighth Annual



Conference and Exposition

February 14-17, 1990

Preconference workshops
February 14 and 15

Tucson Convention Center
Tucson, Arizona

The National Conference for EMTs, Paramedics, Nurses, Physicians, Instructors, Supervisors, and Administrators

Presented by JEMS, the Journal of Emergency Medical Services and The Conference Corporation

Please send me an EMS Today registration packet!

Name _____

Company _____

Address _____

City _____

State _____

Zip _____

Phone _____

Mail to: **The Conference Corporation**
P.O. Box 805
Solana Beach, CA 92075
619/481-5267

EMERGENCY CARDIAC CARE

ALBUQUERQUE, HILTON • ALBUQUERQUE, NEW MEXICO

APRIL 26-29, 1990

Update



(Formerly known as the Conference of Citizen CPR)

Presented by Citizen CPR Foundation, Inc.

A CONFERENCE FOR:

Emergency Healthcare Providers, CPR Instructors, Researchers, E.C.C. Training Center Coordinators, Dispatchers, Public Safety Officers, Public Education And Information Officers, Nurse Educators, EMS Instructors, Industrial Safety Directors

Set in beautiful Albuquerque, New Mexico, this year's Emergency Cardiac Care Update Conference has expanded its horizons to include not only CPR, but also other aspects of emergency cardiac care.

Its theme, "Strengthening Each Link in the Chain of Survival" refers to the five links in emergency cardiac care: 1) early recognition, 2) early access, 3) early CPR, 4) early defibrillation, and 5) early advanced life support. The conference is designed to show the interdependence of these variables within effective systems of emergency cardiac care.

PRECONFERENCE WORKSHOPS

This year introduces a new feature—preconference workshops. Two workshops give attendees an opportunity to get an in-depth view into important educational topics.

• Building Blocks for the Adult Learner

Teaching CPR is a hard job. First, the material is complex. You need to teach judgment, cognitive information, and psychomotor skills. This workshop will provide a very practical "hands-on" approach to improving your presentation. You will learn the different methods by which adults learn, and develop skills to tell which type of learners you have in the classroom.

• Implementing an Early Defibrillation Program that Works

Four years ago, defibrillation was a skill reserved for physicians, nurses, paramedics and other personnel trained in advanced life support techniques. Today, defibrillation is accessible to a much broader base of health and safety providers. You'll learn why early defibrillation is making an impact on survival, and how critical system elements contribute to the success of early defibrillation programs.

GENERAL SESSIONS

Topics in emergency cardiac care are further discussed in three days of General Sessions. Mickey S. Eisenberg, MD, PhD delivers the keynote address entitled "Strengthening Each Link in the Chain of Survival."

Among the other topics discussed are:

- Infectious Diseases: Trends & Risks
- Current Research on Ventilation/Circulation
- Pediatric Life Support
- Automated Defibrillation: From Concept to Standard of Care
- Stroke Emergency Care
- Near Death Experiences
- Ethics of Resuscitation
- Citizen CPR: What's Left of the Dream

CONCURRENT SESSIONS

More in-depth sessions run concurrently throughout the course of the conference, giving attendees a more specific look at various topics discussed in the General Sessions.

This year some of the topics are:

- Dispatcher-Assisted Telephone CPR: Common Delays and Time Standards For Delivery
- Comprehensive Strategies for Implementing Emergency Cardiac Care Quality Assurance Programs
- Using the News Media to Promote Citizen CPR
- Psychological Impact of Resuscitation of the Rescuer

EXPOSITION & ABSTRACTS

Throughout the four days original research will be presented in both abstract and poster presentations, and there will be an exhibit hall where the latest products and services related to emergency cardiac care and instruction will be displayed.

SPECIAL EVENT—LOS AMIGOS ROUND UP

After the last exhibit hours close, get ready for the Los Amigos Round Up. The fun begins with a western style "shoot-out" and barbecue. Meat will be cooking on the grill, and native Indians, in their colorful ceremonial dresses will perform ritual dancing. Duck races for charity complete the fun.

REGISTER BY MARCH 27 AND SAVE \$20!
For registration information, please contact:
The Conference Corporation
P.O. Box 805
Solana Beach, CA 92075
619/481-5267