

## JOURNAL OF MENTAL SCIENCE.

Asylum Reports have been received for 1912-13 from those marked with an asterisk:—COUNTRY.—Beds, Berks, Bucks,\* Cambridge, Carmarthen,\* Chester, Chester (Parkside), Cornwall, Cumberland,\* Denbigh, Derby,\* Devon, Dorset,\* Durham, Essex, Glamorgan,\* Gloucester, Hants,\* Isle of Wight, Hereford, Hertford, Kent (Barming),\* (Chartham),\* Lancashire (Lancaster), (Rainhill), (Prestwich),\* (Whittingham), Leicester, Lincoln (Kesteven), (Bracebridge), London (Colney Hatch), (Hanwell), (Banstead), (Canehill), (Claybury), (Bexley), (Stone, Dartford),\* Middlesex, Monmouth,\* Norfolk, Northampton, Northumberland,\* Nottingham, Oxford, Salop,\* Somerset (Wells), (Taunton), Stafford (Stafford),\* (Burntwood),\* (Cheddleton),\* Suffolk,\* Surrey (Brookwood),\* (Netherne),\* Sussex (East), (Chichester), Warwick, Wilts,\* Worcester,\* Yorkshire (Wakefield),\* (Wadsley), (Menston), (Clifton), (Beverley); BOROUGH.—Birmingham (Winson Green), (Rubery Hill), Bristol, Canterbury, Cardiff,\* Derby,\* Exeter, Hull, Hayward's Heath,\* Ipswich, Leicester, Middlesbrough,\* Newcastle, Norwich, Nottingham, Plymouth, Portsmouth, Sunderland, West Ham.\* HOSPITALS.—Manchester, Wonford, Barnwood,\* Albert, Lincoln, St. Luke's, St. Andrew's, St. Ann's,\* Coppice, Warneford,\* Coton Hill, Bethlem,\* Earlswood,\* Bootham,\* Retreat,\* Colchester,\* Broadmoor, Isle of Man; Metropolitan Asylums Board (Caterham),\* (Darenth),\* (Leavesden),\* (Tooting Bec),\* (Rochester House); Aberdeen (Kingseat),\* Argyll, Ayr,\* Dumfries,\* Edinburgh,\* Midlothian, Fife, Dundee, Montrose, Inverness,\* Lanark, Barony, Glasgow, (Royal),\* (Woodilee),\* Govan,\* Gartloch,\* Kirklands, Perth,\* Murthly, Roxburgh,\* Stirling,\* Baldovan, Armagh, Ballinasloe, Belfast, Carlow, Castlebar, Clonmel, Cork, Downpatrick,\* Ennis, Enniscorthy, Farnham, Kilkenny, Killarney, Letterkenny, Limerick, Londonderry, Maryborough, Monaghan, Mullingar, Omagh, Palmerston, Richmond St. Patrick's, Sligo, Waterford.


The following Asylum Reports have also come to hand:—Egypt, Cape of Good Hope, Nova Scotia, New Brunswick, Victoria, New York, Massachusetts Hospital, Ontario, Verdun, Warren, Pennsylvania, Philadelphia Friends, Binghamton, Willard, Northampton, Long View, South Australia, Cleveland, Matteawan, New South Wales, Agra and Oudh, Assam, Madras, Bengal, Bombay, Central Provinces, Rangoon, Punjab, North-Western Provinces, Tezpur, Mississippi, Pennsylvania Hospital, Washington, Utica, Long Island, Virginia Central, Illinois West, New Hampshire, Butler, Maryland, Pennsylvania West, South Mountain, Manhattan, Indiana East, Connecticut, Carolina N., Dakota N., Ohio, Carthage, Buffalo, Michigan East, Missouri, Alt Scherbitz, Massachusetts Board, Virginia West, Pennsylvania, Danville, Sheppard and Pratt Hospital, Baltimore, Pennsylvania, Harrisburgs, Pennsylvania, Norristown, Aarhus, Lebanon,\* Hudson River, Rochester, Taunton, Iowa, Jamaica, Grahamstown, Pretoria, Egypt, Albany, Tarrytown, Straits Settlements, Lower Austria.

Authors of Original Papers receive 25 reprints of their articles free of cost if application be made on the slips when returning proof. If any *extra* reprints are required, notice should be at the same time sent to the Printers, Messrs. ADLARD and SON, Bartholomew Close, London, E.C., who will supply them at a fixed charge. Unless instructions are sent by authors of Papers when the proofs are returned, no copies can be guaranteed.

The copies of the *Journal of Mental Science* are regularly sent by carrier, who in every case obtains a receipt of delivery, to the Ordinary and Honorary Members of the Association. Complaints of non-receipt of the JOURNAL should be sent to Messrs. ADLARD. Any change of address should be intimated to the General Secretary.

**The Moat House, Tamworth, Staffs.**

Stations: L. & N.W. and Mid. Railways.



The House stands in grounds of ten acres (within five minutes' drive of either Station), and is devoted to the Care and Treatment of a few Ladies suffering from Nervous and Mental Disorders, who enjoy the comforts, privacy, and occupations of home-life. Voluntary Patients are received without Certificates.

*For terms, etc., apply to the Resident Licenseses:*

EDWARD HOLLINS,  
M.A.Camb., J.P., or  
(Mrs.) S. A. MICHAUX.

**A Home for Nervous and Mental Cases.**

**BARNSLEY HALL, BROMSGROVE.** Mental Private Patients OF BOTH SEXES are received in connection with the Worcestershire Asylum.

EXTENSIVE PRIVATE GROUNDS IN THE BEAUTIFUL LICKEY DISTRICT.

Charge: ONE GUINEA WEEKLY.

For further particulars and necessary forms apply to the MEDICAL SUPERINTENDENT.

**TRAINED NURSES' DEPARTMENT AT THE RETREAT, YORK.**

Staffed by Nurses who have been trained for four years in the Retreat and conducted upon a profit-sharing basis. Mental and Nervous cases only undertaken. Terms 2 guineas weekly. Male Nurses £2 10 0.

Apply, MATRON, Retreat, York.

Nat. Tel. 112.

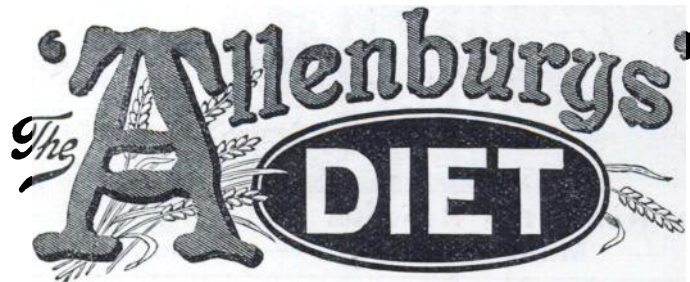
ALWAYS USE  
**REFLEX**  
FLOOR POLISH.  
REQUIRES NO MIXING WHATEVER.  
Brilliantly Polishes Floors, Linoleums, Floorcloths, &c.  
*Economical, Cleanly, Healthful; Maximum of Lustre for Minimum of Labour.*  
**GEO. T. COX & SONS, Ltd.,**  
9 & 10, ST. MARY-AT-HILL, EASTCHEAP, LONDON, E.C.  
This Polish is specially adapted for use in Public Institutions and other large establishments. Samples Free on application.

**LEICESTER BOROUGH MENTAL HOSPITAL, HUMBERSTONE.**

**WANTED.**—Second Assistant Medical Officer and Pathologist (Clinical). Male, single, age under 35. Ex-H.P. or H.S. Salary commencing at £200 (all found), and rising to £250 at end of first year, with £50 additional as Pathologist.

Apply MEDICAL SUPERINTENDENT.

## Mental or Physical Fatigue



**A PARTIALLY PRE-DIGESTED  
MILK AND WHEATEN FOOD.**

When brain or body is weary the digestive powers are weakened and distaste for ordinary food is often experienced. Under such circumstances the "ALLENBURYS" DIET is especially valuable. It is pleasant to take, easily digested and assimilated, and speedily restorative. Thus it helps the system to recover tone and vigour.

By the use of the "ALLENBURYS" DIET all trouble of peptonising milk and farinaceous foods is overcome. In the sick room it will be found extremely useful as the food is easily digested and assimilated, is quickly made, and only the exact quantity required need be prepared at a time.

The "ALLENBURYS" DIET is made from pure, rich milk and whole wheat, both ingredients being partially pre-digested during manufacture. It can be taken by those who cannot digest cow's milk, and provides a light and very nourishing diet for Invalids, Dyspeptics and the Aged.

For travellers by sea or land this complete food will be found exceedingly valuable.

**Made in a minute. Add boiling water only.**

**A Sample with full particulars sent free on request.**

**ALLEN & HANBURYS Ltd.,  
37 Lombard Street, London, E.C.**

**SOUTH BEACON,**  
**HADLOW DOWN, BUXTED, SUSSEX.**  
ESTABLISHED 1892.

Telegrams: "Hadlow Down." Stations: Buxted, Mayfield or Heathfield.

40 Acres of  
Farm and  
Recreation  
Ground.  
Riding,

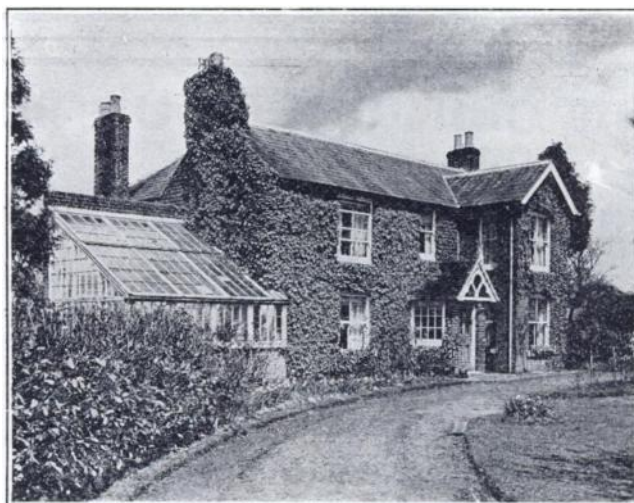


Driving,  
Motoring,  
Golf  
and all  
Outdoor  
recreations.

For the Treatment of Nervous or slight Mental Breakdown.

TERMS FROM 3 GUINEAS PER WEEK.

**THE CROFT.**



A comfortable cottage residence, where one gentleman can have special care and attention without necessarily coming into contact with other patients.

If desirable he can enjoy all the recreations provided at South Beacon—Motoring, Riding, Golf.

UNDER MEDICAL SUPERVISION.  
**MALE NURSES' (TEMPERANCE) CO-OPERATION.**  
LIMITED.

Only  
Addresses— { London: 10, THAYER STREET, MANCHESTER SQUARE, W.  
Manchester: 235, BRUNSWICK ST. (Facing Owens College).  
Edinburgh: 7, TORPHICHEN STREET.  
Birmingham: 75, HAGLEY ROAD.

Superior Trained MALE NURSES for Medical, Surgical, Mental, Dipsomania, Fever, and Travelling Cases supplied at a moment's notice, Day or Night. All Nurses supplied by this Association are TOTAL ABSTAINERS. SKILLED MASSEURS supplied. Terms: £1 16s. 6d. to £3 3s. per week. Nurses to receive their own fees.

ALL NURSES FULLY INSURED AGAINST ACCIDENT.

Telephones { (London), 638, Paddington.  
(Manchester), 4899, Central.  
(Edinburgh), 2716, Central.  
(Birmingham), 2106, Midland.

Telegrams { "Assuaged, London."  
"Assuaged, Manchester."  
"Assuaged, Edinburgh."  
"Assuaged, Birmingham."

W. WALSH, Secretary.

NEW BOOK. Price 2/- net. Illustrated.

**INDUSTRIES FOR THE FEEBLE-MINDED  
AND IMBECILE.**

A HANDBOOK FOR TEACHERS.

By A. BICKMORE, Craftsman.

ADLARD & SON, BARTHOLOMEW CLOSE, E.C.

**THE CLINICAL JOURNAL**

A WEEKLY RECORD OF

**CLINICAL MEDICINE AND SURGERY.**

Annual Sub. 15/6 post free Inland.

**NOTICE TO ADVERTISERS.**

*All Communications concerning Advertisements  
in 'The Journal of Mental Science' should be  
addressed to*

**Messrs. ADLARD & SON,  
Bartholomew Close, London, E.C.**

Telephone: Holborn 927.

# JOURNAL OF MENTAL SCIENCE.

CONTENTS FOR JANUARY, 1914.

Pages

## Original Articles.—

- The Morison Lectures, 1913.—The Serum and Cerebro-spinal Fluid Reactions and Signs of General Paralysis; by **George M. Robertson, M.D., F.R.C.P.Ed.**—Vaccine Treatment in Asylums; by **W. Ford Robertson, M.D.**—The Villa or Colony System for the Care and Treatment of Cases of Mental Disease; by **T. E. Knowles Stansfield.**—Dysentery, Past and Present; by **H. S. Gettings, L.R.C.P., D.P.H.**—The Clinical Value and Significance of Leucocytosis in Mental Disease; by **D. J. Jackson, B.A., M.D., Ch.B.**—The Albumen in the Cerebro-Spinal Fluid in Cases of Mental Disease; by **H. D. MacPhail, M.A., M.D.**—Some Features of the Recent Outbreak of Enteric Fever at Omagh District Asylum; by **Patrick O'Doherty, B.A., M.B., B.Ch.**—The Pupil and its Reflexes in Insanity; by **A. H. Firth, M.A., M.D.Edin.** . . . . . 1—98

## Clinical Notes and Cases.—

- On a Case of "Pellagra" in an Insane Patient; by **F. E. Rainsford, M.D.**  
—A Case of Strangulated Inguinal Hernia in an Old Insane Woman, with Gangrene of the Bowel; Enterotomy; Recovery; by **Edward Gane, M.D.** . . . . . 98—102

## Recent Medico-Legal Cases.—

- Rex v. Chetwynd . . . . . 102—111

## Occasional Notes.

- The Retirement of Dr. Urquhart.—The Mental Deficiency Act . . . . . 112—113

## Epitome of Current Literature.—

1. Physiological Psychology.—2. Clinical Psychiatry.—3. Treatment of Insanity.—4. Sociology.—5. Asylum Reports . . . . . 113—157

## Notes and News.—

- The Medico-Psychological Association of Great Britain and Ireland.—Northern and Midland Division.—South-Western Division.—South-Eastern Division.—Scottish Division.—Irish Division.—Obituary.—London County Council (General Powers) Bill.—Notices by the Registrar.—Notices of Meetings.—Appointments . . . . . 157—175

---

ADLARD AND SON, IMPR., LONDON AND DORKING.