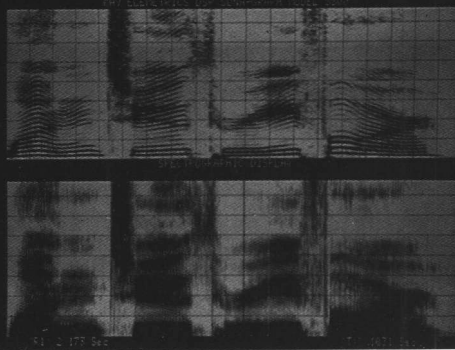
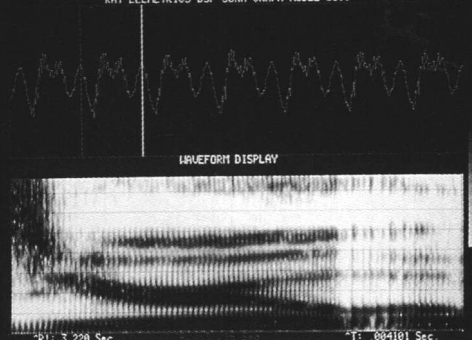


# Real-time speech analysis workstation.....

KAY ELEMETRICS DSP SONA-GRAPH MODEL 5500



## ....why wait?

The DSP Sona-Graph™, model 5500 is a workstation that provides state-of-the-art speech and voice analysis in a high speed environment. No waiting is required because the analysis occurs in real-time. Speech Pathologists, ENT physicians, Phoniatriests, Linguists and other speech professionals now have access to a speech workstation designed with them in mind. So.....why wait.

- Real-Time (DC-32,000 Hz)**
- Dual channel analysis / display**
- High resolution graphics**
- Menu-driven operation for ease of use**
- High speed computer interface**

.....And available programs keep growing for the DSP Sona-Graph.

- LPC analysis / synthesis**
- Voice pathology analysis (jitter, shimmer, H/N ratio)**
- Long term spectral averaging**

*For more information on using the DSP Sona-Graph in your work, call Kay's Product Specialist at (201) 227-2000 or write to the address listed below.*

## **KAY**

Kay Elemetrics Corp.  
12 Maple Avenue • Pine Brook, NJ 07058  
Tel: 201-227-2000 • TWX: 710/734-4347  
FAX: 201-227-7760

DSP Sona-Graph™ is a trademark of Kay Elemetrics Corp.

# Journal of the International Phonetic Association

## NOTES FOR CONTRIBUTORS

*Policy.* The *Journal of the International Phonetic Association* (formerly entitled *Le Maître Phonétique*), is concerned with all aspects of the theory, description and use of phonetics and phonology. Contributions are subject to review, and to the Editor's final decision as to publication. The official language of the *Journal* is English, though contributions in other languages of wide currency will be published as the Editor thinks fit.

*Style.* Contributors are encouraged to submit their text, if possible, on Macintosh floppy disk (800Kb or 400Kb), in Times font. The *Journal* is set using Microsoft Word, which is compatible with MacWrite. Disks from any other computer can be used. In other circumstances, contributions should be submitted in typewritten or computer printout form, in double spacing with wide margins, on one side of the sheet only. The style conventions of the *Journal* should be followed wherever possible, and the Editor reserves the right to alter contributions so that they conform to house style. Footnotes should be avoided as far as possible. References are to be made IN THE TEXT by giving in parentheses the name of the author and the year of publication, and where relevant the page(s) referred to: e.g. "... (Jones 1963) ...", or "... Jones (1983: 453) ...". Where essential, footnotes should be indicated in superscript consecutively throughout the text, and collected as a separate sheet at the end of the manuscript. All works referred to should be listed at the end of the article, following the conventions used in this number of the *Journal*. Phonetic transcriptions should make use of the symbols and conventions of the Association's alphabet. The set of phonetic symbols used at present in the *Journal* is available as LaserIPA from Linguist's Software, Inc., P.O. Box 580, Edmonds, WA 98020-0580. Phonemic symbols should be enclosed in slashes, and allophonic or general-phonetic symbols in square brackets, e.g. /tel/, [tet], [m]. Figures should be drawn to a standard which will allow them to be reproduced clearly in photo-reduction.

*Proofs and offprints.* Two copies of proofs will be sent to the author (or their nominee), who will be expected to correct them and return them to the Editor, by airmail where appropriate, within ten days of receipt. Upon publication, 25 copies of a contribution will be supplied to the author free of charge; further offprints may be purchased at cost.

*Submission of manuscripts.* Send material to be considered for publication to: The Editor of JIPA, c/o Phonetics Laboratory, Linguistics Department, UCLA, Los Angeles, CA 90024-1543, U.S.A.