

## Research Article

**Cite this article:** Prasetyono E, Nirmala K, Supriyono E, Sukenda S, Hastuti YP (2024). Evaluation of phytoplankton abundance and wastewater quality in intensive vannamei shrimp ponds in the northern coastal area of Bangka Island. *Journal of the Marine Biological Association of the United Kingdom* **104**, e86, 1–12. <https://doi.org/10.1017/S0025315424000651>

Received: 12 September 2023

Revised: 11 May 2024

Accepted: 7 June 2024

### Keywords:






Bangka Island; intensive system; phytoplankton; shrimp ponds; wastewater

### Corresponding author:

Eva Prasetyono;

Email: [evaintegral@gmail.com](mailto:evaintegral@gmail.com)

# Evaluation of phytoplankton abundance and wastewater quality in intensive vannamei shrimp ponds in the northern coastal area of Bangka Island

Eva Prasetyono<sup>1,2</sup> , Kuku Nirmala<sup>1</sup> , Eddy Supriyono<sup>1</sup> ,  
Sukenda Sukenda<sup>1</sup>  and Yuni Puji Hastuti<sup>1</sup> 

<sup>1</sup>Department of Aquaculture, Faculty of Fisheries and Marine Science, Bogor Agricultural University, Bogor-West Java, 16680, Indonesia and <sup>2</sup>Department of Aquaculture, Faculty of Agriculture, Fisheries and Marine Sciences, University of Bangka Belitung, 33172, Indonesia

## Abstract

Effluent waste generated from the intensive production of vannamei shrimp is known to play an essential role in increasing phytoplankton abundance and the alteration of environmental quality. This alteration is characterized by the presence of various organic compounds and their derivatives. The northern coastal area of Bangka Island represents a region in Indonesia that has witnessed significant growth and development as a vannamei shrimp cultivation zone. Therefore, this study aims to evaluate phytoplankton abundance and environmental quality in the waste of shrimp ponds in the northern coastal area of Bangka Island. The investigation procedures were carried out in four specific locations within this area, namely BL1, BL2, BL3, and BL4. The results showed the presence of five–six distinct phytoplankton groups, including a total of 11–18 genera, within the effluent discharge from these ponds. The highest abundance of phytoplankton was recorded at BL3, with a value of 2,418,375 cells ml<sup>-1</sup>. The phytoplankton groups identified at all locations included Chlorophyta, Cyanophyta, Chryptophyta, Bacillariophyta, and Pyrrophyta. Euglenophyta was found at BL1 and BL3 but was not observed at BL2 and BL4. Furthermore, the most abundant group found in this study was Chlorophyta. The genera *Nanochloropsis*, *Chlorella*, *Microcystis*, and *Nitzschia* were consistently found in all the surveyed ponds. The calculation results showed that all locations had a moderate level of diversity, high evenness, and the absence of dominance. Based on the findings of principal component analysis, there was a commonality in parameters that exerted a strong influence on phytoplankton abundance, including nitrate, orthophosphate, and magnesium.

## Introduction

The cultivation of vannamei shrimp in intensive ponds is an aquaculture activity that has witnessed significant growth in various countries, particularly Indonesia (Supono, 2021). The increasing demand for vannamei shrimp has driven an increase in its production, facilitated by the intensification of cultivation systems (Bosman *et al.*, 2021). Furthermore, intensive cultivation of this aquatic animal is characterized by high stocking densities and the extensive use of high-protein artificial feeds (Emerenciano *et al.*, 2022). Several studies have shown that feeds serve as a nutrient source, containing essential components, such as proteins, fats, carbohydrates, vitamins, and minerals required for the maximum growth and enhanced performance of vannamei shrimp (Ayisi *et al.*, 2017). The protein requirement of this animal ranges from 32.2 to 35.6% (Lee and Lee, 2018).

The main objective of the production process of vannamei shrimp in intensive aquaculture systems is to maximize the productivity of ponds by increasing stocking density and optimizing input provision, coupled with adequate technological support. Cultivation at high stocking density comprises the use of commercial artificial feed and the operation of large-scale water aerators, complemented by the addition of probiotic bacteria. This process aims to stimulate growth while maintaining water quality suitable for the maximum growth of the animal (Tantu *et al.*, 2020).

Intensive cultivation of vannamei shrimp often leads to increased production yields and the generation of a significant amount of solid and dissolved waste in the form of sludge and effluent (Prasetyono *et al.*, 2022). The solid waste primarily originates from uneaten feed, metabolic residues, undigested or unabsorbed feed, and dead microorganism colonies. Meanwhile, the dissolved waste is generated from the decomposition of organic feed materials in water, leading to the production of various compounds, including ammonia, urea, carbon, nitrogen, and phosphorus (Dauda *et al.*, 2019; Iber and Kasan, 2021; Jasmin *et al.*, 2020). According to Patil *et al.* (2021), aquatic animals typically retain 20–25% of the consumed protein and release the rest into the ponds as total ammonia nitrogen and organic nitrogen. The organic sediment accumulating at the bottom of the ponds becomes a source of nitrogen and phosphorus in shrimp cultivation systems (Syah *et al.*, 2017).



Waste generated from vannamei shrimp farming activities can lead to changes in environmental quality. The presence of inorganic compounds originating from the decomposition of organic materials containing nutrient components often leads to elevated levels of nutrient elements in the water, including ammonium ( $\text{NH}_4$ ), nitrate ( $\text{NO}_3$ ), and orthophosphate ( $\text{PO}_4^{3-}$ ). According to previous studies, the total nitrogen and total phosphorus content in the discharged water from farming activities represent approximately 10–30% and 30–80% of the organic matter released into the water (Dauda *et al.*, 2019). Furthermore, the presence of these elements at high concentrations typically leads to increased growth of microalgae or phytoplankton, potentially disrupting aquatic ecosystems (Cui *et al.*, 2021). The organic waste from aquaculture activities often undergoes demineralization processes, converting the macro- and micronutrient content into mineral elements (Chiquito-Contreras *et al.*, 2022). These mineral elements are known to play an essential role in supporting the abundance of phytoplankton (Ramos *et al.*, 2017).

Vannamei shrimp farmers discharge a small amount of water from the production ponds during cultivation activities and replace it with fresh water (Iber and Kasan, 2021). This practice is often carried out to maintain water quality throughout the production process. Furthermore, the accumulated sediment sludge is removed through siphoning, and at the end of each cycle, it is completely discharged from the ponds (Hossain *et al.*, 2016). The waste generated from vannamei shrimp production activities is typically collected and processed in specialized locations, known as wastewater treatment ponds (WTPs) before it is discharged into the general water body (Zein *et al.*, 2023).

WTPs play an essential role in the cultivation of vannamei shrimp, standing as the main requirement for farming activities. The presence of these ponds aims to ensure the sustainability of the pond business and the environmental ecosystem (Melian, 2020). The implementation of WTPs is a proactive measure to minimize the burden of shrimp farming waste. The objective is to ensure that the waste meets environmental quality standards, leading to sustainable farming activities with increased environmental awareness (Syah *et al.*, 2017). When constructing shrimp ponds, farmers are required to also build WTPs for treatment of waste before discharge into public waters. This imperative arises from the significant potential for waste generation and its associated environmental impacts (Mohd *et al.*, 2019).

The dynamics of environmental quality conditions, including phytoplankton abundance in pond effluents, can vary across different locations. This variation depends on several factors, including production capacity, production cycles, feed quantity, stocking density, the use of probiotics, and the treatment of waste before discharge (Prasetyono *et al.*, 2022). The northern coastal area of Bangka Island is a region on the island where intensive-scale vannamei shrimp farming activities using high-density polyethylene (HDPE) ponds are prevalent. Mustafa *et al.* (2018) stated that intensive shrimp farming ponds in Indonesia typically use HDPE sheets as the lining material. The use of these materials has been reported to increase production and it is suitable for application in regions characterized by high soil porosity, sandy soil types, and soils containing mineral acids. HDPE-lined ponds also exhibit a greater abundance of plankton when compared to those with soil-lining. This difference can be attributed to the erosion of pond walls or bottoms in soil-lined ponds, which is caused by aeration and rainfall.

Cultivation in this area uses seawater as a water source, and the effluent undergoes treatment before being discharged. The study of phytoplankton abundance and the quality of waste from vannamei shrimp ponds is an important undertaking for cultivating other organisms. Therefore, this study aims to evaluate the abundance of phytoplankton and environmental quality in the waste of

intensively cultured vannamei shrimp ponds in the northern coastal area of Bangka Island, as well as the factors supporting the abundance of phytoplankton. The results are expected to serve as a basis for the cultivation of plankton feeder and detritus feeder biota using this waste.

## Materials and methods

This study was conducted at the intensive shrimp ponds located in the Belinyu District, Bangka Regency, from February to March 2023. A total of four ponds were selected as samples for the experimental procedures. Furthermore, the coordinates of the four pond locations are shown in Table 1, and a map of these locations is presented in Figure 1.

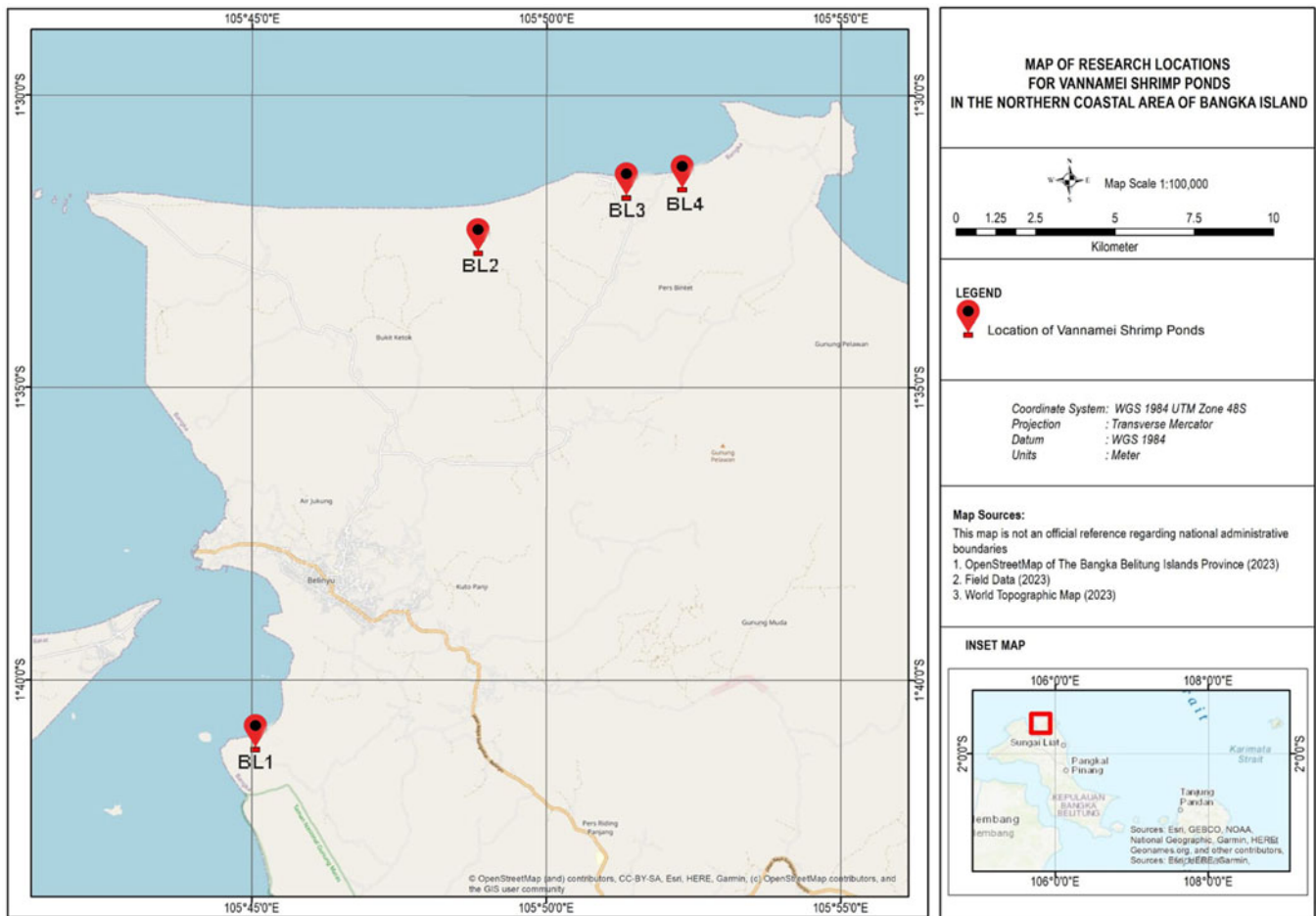
Sampling of water and sediment in each pond area was conducted during the operation of the containment pond and waste treatment from shrimp production activities on days 50–90. Days 50–90 were the periods with the highest concentrations of nitrate and phosphate in the sampling locations (Rachmansyah *et al.*, 2021). Nitrate and phosphate were compounds derived from the decomposition of organic waste in the ponds and were essential nutrients for phytoplankton growth. The samples were collected in the morning from 09:00 to 11:00 AM local time under overcast weather conditions with an air temperature of 29°C. Sampling of water and sediment for the analysis of shrimp pond waste quality was conducted at four points within each shrimp pond waste treatment location (WTPs). The first point was located at the *influent* area where the water flowed from the production pond to the WTPs. The second and third points were in the middle of the WTPs, whereas the fourth point was near the *effluent* area where the water exited the WTPs. Water sampling for phytoplankton analysis was performed by collecting water using a 10 l volume container. The water in the container was filtered using a *plankton net*, specifically a number 25 net, for a total of ten times. Subsequently, the filtered samples were transferred into 100 ml bottles, and two–three drops of Lugol's solution were added for preservation. The samples were then observed under a microscope at magnifications ranging from 40× to 100× (Lestari *et al.*, 2021). The identification of phytoplankton was conducted using the phytoplankton identification book by Stafford (1999). Based on the observation results, the abundance of phytoplankton, diversity index, evenness index, and dominance index were calculated. The calculation of phytoplankton abundance followed the guidelines provided by APHA (2017):

$$N = n \times \frac{a}{A} \times \frac{v}{V_c} \times \frac{1}{V}$$

where  $N$  is the plankton abundance (cells  $\text{ml}^{-1}$ ),  $n$  is the number of counted plankton (cells),  $a$  is the area covered by the glass slide ( $\text{mm}^2$ ),  $A$  is the total field of view under the microscope ( $\text{mm}^2$ ),  $v$  is the volume of water sample in the collection bottle (ml),  $V_c$  is the volume of concentrated plankton under the cover glass (ml), and  $V$  is the volume of filtered water sample (ml).

**Table 1.** Research location coordinates

Shrimp pond locations	Coordinates
BL1	1°41'04.7''S, 105°45'04.3''E
BL2	1°31'30.0''S, 105°52'19.5''E
BL3	1°32'35.4''S, 105°48'51.4''E
BL4	1°31'38.7''S, 105°51'22.4''E



**Figure 1.** Map of vannamei shrimp research locations in the northern coastal area of Bangka Island.

The structure of the phytoplankton community was analysed through the calculation of three ecological indices based on the equations outlined in Odum (1998). These indices included the Shannon–Wiener diversity index, Shannon–Wiener evenness index, and Simpson dominance index. Plankton diversity was calculated using the Shannon–Wiener index formula as follows:

$$H' = - \sum_{i=1}^s P_i \ln P_i$$

where  $H'$  is the Shannon–Wiener diversity index,  $S$  is the number of species,  $P_i$  is relative abundance ( $n_i/N$ ),  $n_i$  is the number of individuals of species  $i$ , and  $N$  is the total number of individuals.

The calculation of phytoplankton evenness was performed using the following formula:

$$e = \frac{H'}{H'_{\max}}$$

where  $E$  is the evenness index,  $H'$  is the Shannon–Wiener diversity index,  $H'_{\max}$  is the natural logarithm ( $\ln$ ) of the number of species ( $S$ ), and  $S$  is the number of species.

The dominance index of plankton was calculated using the following formula:

$$D = \sum \left( \frac{n_i}{N} \right)^2$$

where  $D$  is the dominance index,  $n_i$  is the number of individuals of species  $i$ , and  $N$  is the total number of individuals.

The analysis of nutrient characteristics in shrimp pond waste consisted of ammonium, nitrite, nitrate, orthophosphate, total organic matter (TOM) in water, and TOM in sediment. Furthermore, the analysis of ammonium ( $\text{NH}_4$ ), nitrite ( $\text{NO}_2$ ), nitrate ( $\text{NO}_3$ ), and orthophosphate ( $\text{PO}_4$ ) was carried out using a UV–Vis spectrophotometer, following the guidelines provided by APHA (2017). The evaluation of TOM in water was performed using volumetric methods, whereas the assessment of TOM in sediment was carried out with gravimetric methods.

The parameters salinity, temperature, pH, dissolved oxygen (DO), and oxidation reduction potential (ORP) were measured *in situ* using specific measuring instruments. These instruments included the Atago hand refractometer, TP101 digital thermometer, Hanna Digital HI 98107 pH meter, portable Luxtron DO meter, and digital ORP-169F ORP meter. The parameters of calcium (Ca) and magnesium (Mg) were analysed using an atomic absorption spectrophotometer, following the guidelines specified in APHA (2017). Furthermore, the total suspended solids (TSS) were analysed using the gravimetric method based on the procedures outlined in APHA (2017).

The data obtained in this study were analysed descriptively and quantitatively. A comparison of nutrient and organic matter characteristics, as well as environmental quality among the pond locations, was conducted using analysis of variance with a confidence level of 95%. To assess the strength of the relationship between phytoplankton abundance and nutrients with environmental quality parameters, principal component analysis (PCA) was performed using XLSTAT 2019 software (Thakar *et al.*, 2018). Furthermore, the results were presented in the form of matrices and graphs.



## Results

### Shrimp ponds' characteristics

The northern coastal area of Bangka Island was located adjacent to the Natuna Sea. Furthermore, this region had experienced a significant increase in intensive and extensive cultivation of vannamei shrimp in ponds since 2018. Based on field surveys and information from the Bangka Regency Fisheries Office in 2022, there were a total of 32 intensive aquaculture operators in the region. The shrimp farming operators consisted of both corporate entities (business consortia) and individual ownership. The total area of vannamei shrimp production ponds owned by each operator varied, ranging from a minimum of 10,000 m<sup>2</sup> to a maximum of 200,000 m<sup>2</sup>, with an average of 60,000 m<sup>2</sup>. BL1, BL2, BL3, and BL4 were intensive farms located on the north coast of Bangka Island and their production characteristics are presented in Table 2.

BL1, BL2, BL3, and BL4 were intensive shrimp ponds that had been in production for a total of 6, 5, 11, and 8 cycles since their establishment, respectively. The total area of each of them was 40,000, 55,000, 179,500, and 35,000 m<sup>2</sup>, respectively. These ponds used HDPE tarpaulins for vannamei shrimp production. During the production process, commercial artificial feed was used to enhance shrimp growth, while paddle wheels were extensively used to supply oxygen in the water. The protein content of the commercial feed provided to shrimp at all pond locations is relatively similar. At BL1, the protein content is 32% for 1–30 days of cultivation and 28% for cultivation periods exceeding 30 days. The protein content of the feed at BL1 is the same as that of BL2 and BL4. At BL3, the protein content provided to shrimp is 35% for 1–30 days of cultivation, 30–32% for 30–45 days of cultivation, and 28–30% for cultivation periods exceeding 45 days.

The application of probiotic bacteria, either mixed with the feed or directly introduced into the water (bioaugmentation), was also part of the production process. The addition of minerals to water or mixed with feed is applied at all pond locations. The added mineral content consists of macro and micro minerals. Minerals play a significant role in the physiological functions and are required for new shell formation and moulting in shrimp. Minerals are also required to cultivate phytoplankton as natural feed for shrimp. The presence of this mineral affects the presence of phytoplankton in ponds and pond waste.

In all study locations, each site had a pond that collected and treated the waste from vannamei shrimp production activities (WTPs) before being discharged into the natural waters. The waste treatment process in WTPs at each location used a

sedimentation system. Furthermore, the sedimentation system was designed to settle organic matter from the waste generated in the production ponds. After the organic matter had settled, the wastewater was discharged into the natural water bodies. These WTPs were elongated in shape with a depth ranging from 50 to 100 cm, and the bottoms were made of soil without HDPE tarpaulin lining.

### Phytoplankton abundance

The presence of phytoplankton was always observed in vannamei shrimp ponds due to the availability of nutrients from organic matter, which supported their growth. The abundance of phytoplankton in BL1, BL2, BL3, and BL4 ponds reflected their quantity and density in the water. Each pond exhibited a different level of phytoplankton abundance, as shown in Table 3.

Based on the results, there were differences in the phytoplankton groups found in each pond, as shown in Table 3. A total of six groups were found in BL1 and BL3 ponds, namely Chlorophyta, Cyanophyta, Chryptophyta, Bacillariophyta, Euglenophyta, and Pyrrophyta. In BL2 and BL4 ponds, five groups were found, including Chlorophyta, Cyanophyta, Chryptophyta, Bacillariophyta, and Pyrrophyta. Chlorophyta was the most abundant phytoplankton group found in each location compared to others. The results showed that the total abundance of phytoplankton in the effluent water of each pond was above 1,000,000 cells ml<sup>-1</sup>, with the highest abundance statically recorded in BL3 at 2,418,375 cells ml<sup>-1</sup>.

Certain species had been identified with higher abundance compared to others. The presence of phytoplankton varied among the ponds, with some species found in one pond but not in others. The identified samples in each pond are presented in Table 4. According to Table 4, several phytoplankton species were found in BL1, BL2, BL3, and BL4 ponds, with 13, 11, 18, and 14 genera, respectively. The images of the phytoplankton are presented in Figure 2. Some genera, such as *Nanochloropsis*, *Chlorella*, *Microcystis*, and *Nitzschia*, were consistently found in each location. Furthermore, there was a greater variation in the number of genera found in BL3.

The abundance of *Nanochloropsis* and *Chlorella* in BL1, BL2, BL3, and BL4 was significantly higher compared to other genera, as shown in Table 4. The findings showed that the abundance of *Nanochloropsis* in BL1, BL2, BL3, and BL4 ponds was 50.05, 51.21, 46.17, and 50.34%, respectively. The genus *Chlorella* showed a value of 21.45, 21.95, 16.13, and 21.57% in each respective location.

**Table 2.** Characteristics of production activities of vaname shrimp farms on the north coast of Bangka Island at 60th day of culture

Characteristics	Shrimp pond locations			
	BL1	BL2	BL3	BL4
Total pond area	40,000 m <sup>2</sup>	55,000 m <sup>2</sup>	179,500 m <sup>2</sup>	35,000 m <sup>2</sup>
Total production cycle	6	5	11	8
Initial stocking density	110 shrimps m <sup>-2</sup>	110 shrimps m <sup>-2</sup>	120 shrimps m <sup>-2</sup>	120 shrimps m <sup>-2</sup>
Total initial stocking density	4,400,000 shrimps	6,050,000 shrimps	21,540,000 shrimps	4,200,000 shrimps
Probiotic content used	<i>Bacillus subtilis</i> , <i>Bacillus megaterium</i>	<i>Bacillus</i> sp., <i>Pseudomonas</i> sp., <i>Nitrosomonas</i> sp., <i>Aerobacter</i> sp., <i>Nitrobacter</i> sp.	<i>Lactobacillus plantarum</i> , <i>B. subtilis</i> , <i>Saccharomyces cerevisiae</i>	<i>B. subtilis</i> , <i>B. megaterium</i> , <i>Rhodobacter capsulatus</i> , <i>Rhodobacter roseus</i>
Main mineral content added	MgO, CaCO <sub>3</sub> , HCO <sub>3</sub> , NaCl, KCl, H <sub>3</sub> PO <sub>4</sub> , Fe <sub>3</sub> O <sub>4</sub> , MnO	MgO, CaCO <sub>3</sub> , HCO <sub>3</sub> , NaCl, KCl, H <sub>3</sub> PO <sub>4</sub> , UGF, FeSO <sub>4</sub> , MnO	MgSO <sub>4</sub> , MgO, CaHPO <sub>4</sub> , NaHCO <sub>3</sub> , NaCl, KCl, FeSO <sub>4</sub> , MnSO <sub>4</sub> , CuSO <sub>4</sub> , Se, CoSO <sub>4</sub> , KI	MgSO <sub>4</sub> , MgO, CaHPO <sub>4</sub> , NaHCO <sub>3</sub> , NaCl, KCl, FeSO <sub>4</sub> , MnSO <sub>4</sub> , CuSO <sub>4</sub> , Se, CoSO <sub>4</sub> , KI

**Table 3.** Phytoplankton abundance in the effluent of vannamei shrimp ponds in the northern coast of Bangka Island

Phytoplankton groups	Abundance (cells ml <sup>-1</sup> )			
	BL1	BL2	BL3	BL4
Chlorophyta	965,000 ± 73,058	840,625 ± 77,792	1,544,000 ± 469,700	880,625 ± 120,837
Cyanophyta	185,625 ± 41,602	161,875 ± 50,099	318,750 ± 102,276	193,125 ± 51,169
Chryptophyta	39,375 ± 34,057	79,375 ± 54,863	457,500 ± 116,673	55,000 ± 49,875
Bacillariophyta	70,625 ± 29,324	57,500 ± 65,733	105,000 ± 92,308	58,750 ± 62,600
Euglenophyta	3125 ± 1315	–	36,250 ± 21,842	–
Pyrrophyta	12,500 ± 8660	8750 ± 8292	14,375 ± 12,970	36,250 ± 24,281
Total abundance	1,276,250 ± 130,469 <sup>a</sup>	1,148,125 ± 84,592 <sup>a</sup>	2,475,875 ± 450,830 <sup>b</sup>	1,223,750 ± 149,520 <sup>a</sup>

Different superscript letters between the columns indicate significant differences in values (Duncan's test,  $P < 0.05$ ).

### Phytoplankton diversity, evenness, and dominance

Phytoplankton diversity, evenness, and dominance described the richness in the structure of phytoplankton communities and the balance of individuals in a water body. The measurement indices were highly dependent on the presence and abundance of identified species. The values of diversity, evenness, and dominance indices in BL1, BL2, BL3, and BL4 ponds are presented in Table 5.

The calculation results for the diversity index in BL1, BL2, BL3, and BL4 ponds showed that the values were above 1 and below 3, as shown in Table 4. According to the Shannon–Wiener diversity index criteria, values within the range of 1–3 showed a moderate level. This finding showed that the phytoplankton diversity in all ponds exhibited a moderate level.

The calculation of the evenness index in all ponds produced values above 0.6, as shown in Table 5. According to the Shannon–Wiener evenness index, values above 0.6 showed a high level of evenness in a water body. This signified a high level of uniformity in the distribution of individual phytoplankton species within the ponds.

The dominance index of phytoplankton in all ponds showed values below 0.5, as shown in Table 5. According to the Simpson dominance index criteria, values below 0.5 showed the absence of dominance of individual phytoplankton species over others in a water body. The effluent of BL1, BL2, BL3, and BL4 ponds was inhabited by species that did not dominate over each other.

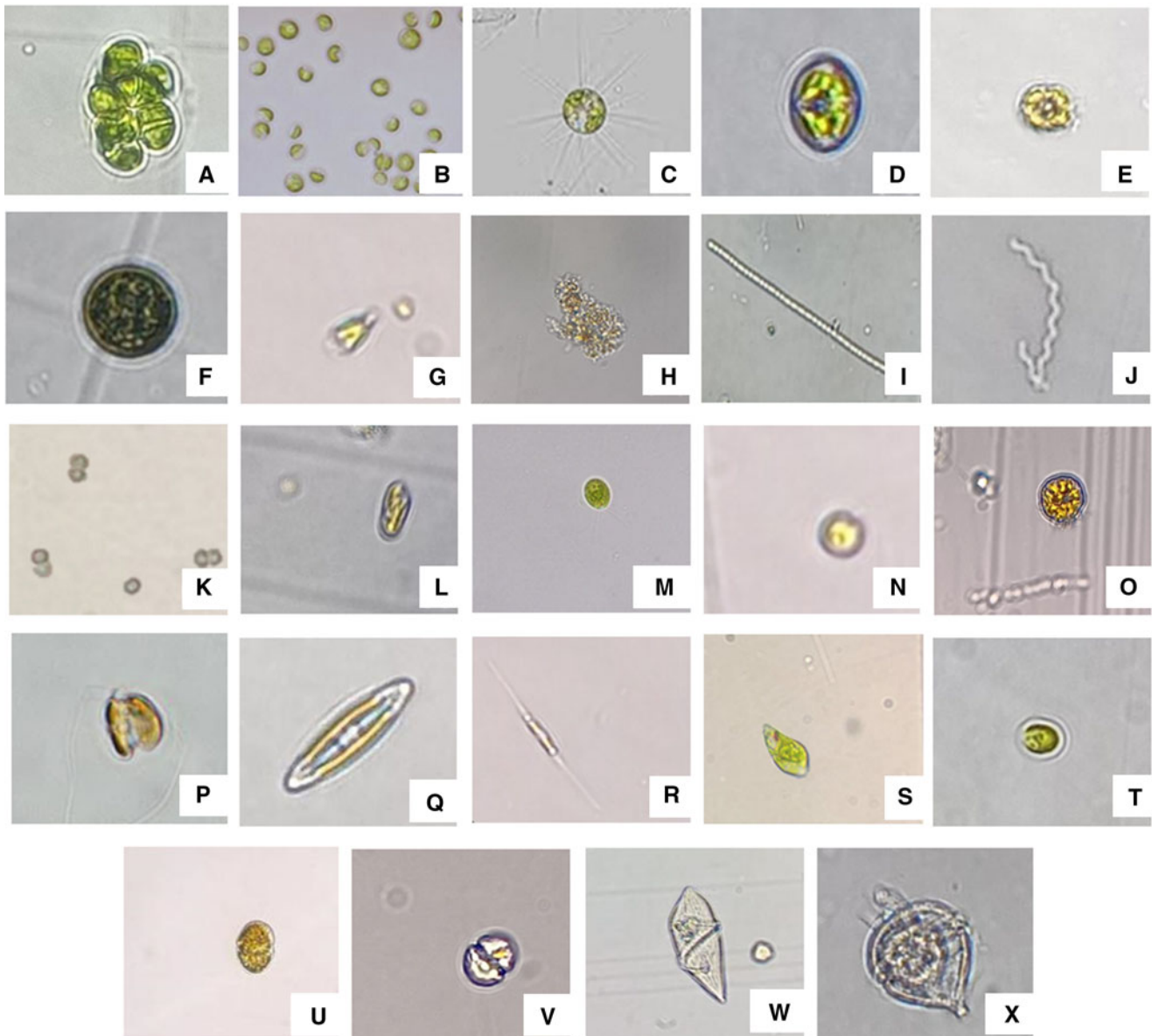
### Quality of pond effluent

The quality of pond effluent was described by nutrient profiles and the physicochemical quality of the water. The obtained values represented the load received by the effluent pond (WTPs) due to the activities conducted in the production pond. Furthermore, the magnitude of the values depended on the characteristics and capacity of the water body to receive or process the load entering the water body. The profiles of nutrient effluent and the physicochemical quality of the water in BL1, BL2, BL3, and BL4 are presented in Figure 3 and Table 6.

Nutrient compounds, such as ammonium, nitrite, nitrate, and phosphate were formed through the decomposition of organic matter. The values of these nutrient compounds varied significantly among all locations. The highest levels of ammonium, nitrate, and orthophosphate were found in the effluent of BL3, with values of  $1.575 \pm 0.161$ ,  $4.410 \pm 1.072$ , and  $5.203 \pm 0.924$  mg l<sup>-1</sup>,

**Table 4.** Identified phytoplankton in the effluent of vannamei shrimp ponds in the northern coast of Bangka Island

Name	Percentage abundance			
	BL1	BL2	BL3	BL4
Chlorophyta				
Nanochloropsis	50.05	51.21	46.17	50.34
Chlorella	21.45	21.95	16.13	21.57
Golenkinia	–	–	0.41	–
Oocystis	4.06	0.05	–	–
Pandorina	–	–	0.16	–
Radiosphaera	0.05	–	0.26	–
Tetraselmis	–	–	0.72	0.05
Cyanophyta				
Microcystis	7.69	6.48	2.12	7.97
Oscillatoria	4.70	4.57	9.41	5.72
Spirulina	–	–	–	0.05
Synechocystis	2.15	3.05	1.65	2.04
Chryptophyta				
Cryptomonas	3.09	6.91	11.37	4.49
Chlamydomonas	–	–	5.38	–
Hemiselmis	–	–	1.14	–
Bacillariophyta (diatom)				
Cyclotella	2.79	4.14	–	2.50
Chrysochromulina	–	–	3.49	–
Navicula	1.27	0.71	–	–
Nitzschia	1.47	0.16	0.85	2.30
Euglenophyta				
Euglena	0.24	–	0.88	–
Trachelomonas	–	–	0.62	–
Pyrrophyta (Dinoflagellata)				
Alexandrium	–	–	–	0.20
Gymnodinium	0.98	0.76	0.39	2.60
Gyrodinium	–	–	0.21	–
Protoperidinium	–	–	–	0.15



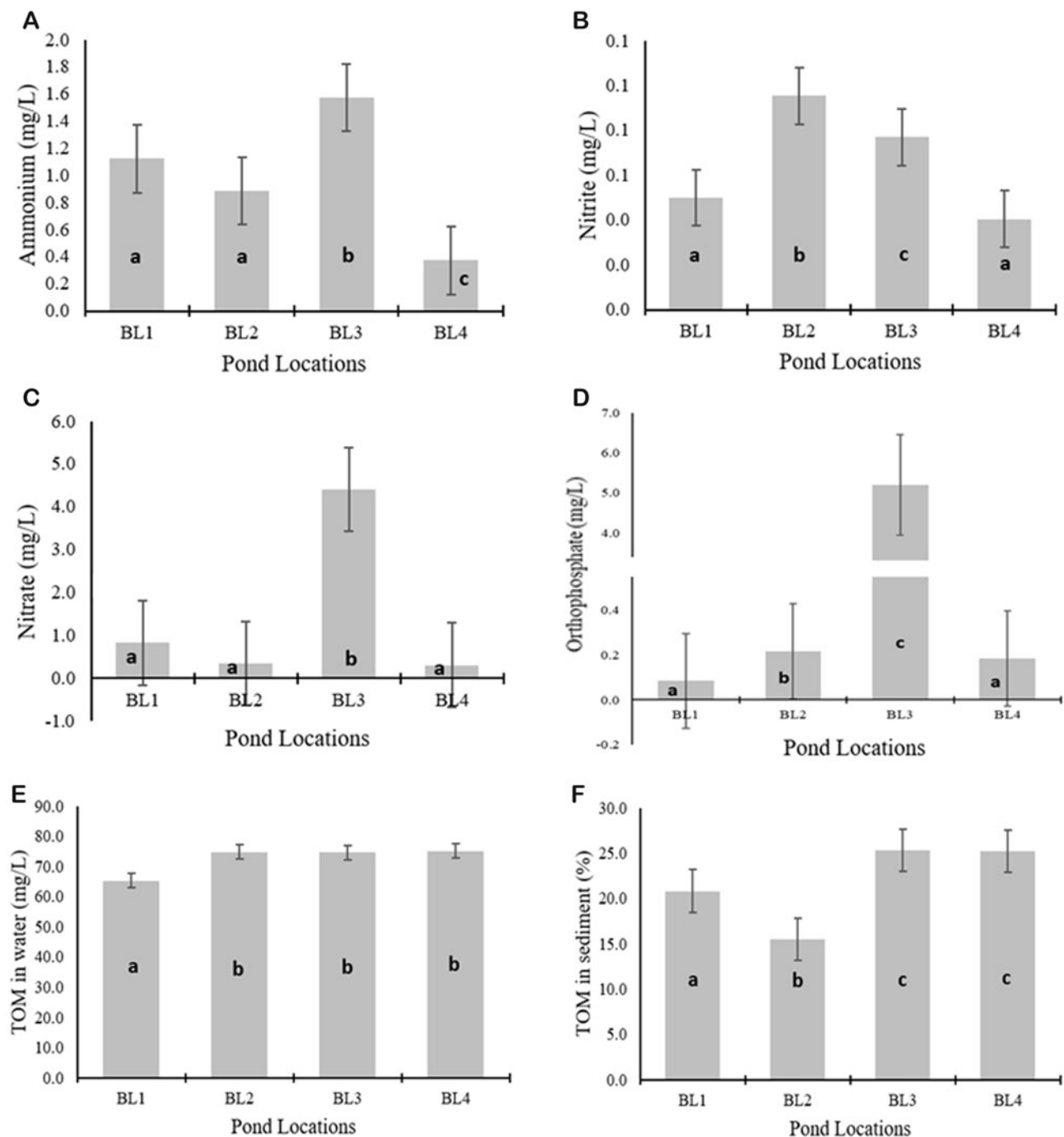
**Figure 2.** Phytoplankton in shrimp pond effluent: (A) *Nanochloropsis*, (B) *Chlorella*, (C) *Golenkinia*, (D) *Oocystis*, (E) *Pandorina*, (F) *Radiosphaera*, (G) *Tetraselmis*, (H) *Microcystis*, (I) *Oscillatoria*, (J) *Spirulina*, (K) *Synechocystis*, (L) *Cryptomonas*, (M) *Chlamydomonas*, (N) *Hemiselmis*, (O) *Cyclotella*, (P) *Chrysochromulina*, (Q) *Navicula*, (R) *Nitzschia*, (S) *Euglena*, (T) *Trachelomonas*, (U) *Alexandrium*, (V) *Gymnodinium*, (W) *Gyrodinium*, and (X) *Protoperidinium*.

respectively. The concentration of TOM in BL3 and BL4 was not significantly different and higher than that in BL1 and BL2, with values of  $74,750 \pm 3304$  and  $75,208 \pm 4317 \text{ mg l}^{-1}$ , respectively. Furthermore, the sediment TOM concentration was higher at BL3, measuring  $25.39 \pm 2.79$ , and was not significantly different from BL4 at  $25.213 \pm 2.167$ . This condition was influenced by the organic matter input originating from shrimp production activities in the production ponds.

**Table 5.** Phytoplankton diversity, evenness, and dominance in the effluent of ponds in the northern coast of Bangka Island

Measurement Indices	Pond locations			
	BL1	BL2	BL3	BL4
Diversity index	1.619	1.504	1.827	1.565
Evenness index	0.631	0.627	0.632	0.610
Dominance index	0.309	0.324	0.267	0.314

Water quality parameters in the effluent of BL1, BL2, BL3, and BL4 showed variations among these locations, as shown in Table 6. These conditions were influenced by the organic matter load originating from production ponds, weather conditions, and air environment during measurements, as well as the waste management system in the waste treatment ponds. The salinity range was  $18.25 \pm 0.50$ – $26.50 \pm 2.38$  ppt, and higher values were observed in BL3 at  $26.50 \pm 2.38$ , which was not significantly different from that in BL1 at  $24.25 \pm 2.87$ . The water temperature ranged between  $27.60 \pm 0.27$  and  $29.30 \pm 0.32^\circ\text{C}$  and did not significantly differ among all locations. The concentration of TSS ranged from  $99.20 \pm 50.13$  to  $262 \pm 60.15 \text{ mg l}^{-1}$ . These TSS values were particularly high ( $>50 \text{ mg l}^{-1}$ ), specifically in BL3, which was significantly higher compared to other locations. The fluctuation in surface pH ranged from  $6.61 \pm 0.56$  to  $7.14 \pm 0.09$ . The DO level at the surface was relatively high ( $>4 \text{ mg l}^{-1}$ ), with the highest DO value observed in BL1 at  $6.83 \pm 0.33$  and the lowest in BL3 at  $4.05 \pm 1.52$ . The mineral values of calcium and magnesium in all pond locations did not significantly differ among the locations. The measured bottom ORP values in each location



**Figure 3.** Characteristics of nutrient compounds and organic matter in shrimp pond effluent: (A) ammonium, (B) nitrite, (C) nitrate, (D) orthophosphate, (E) TOM in water, and (F) TOM in sediment. Error bars represent standard deviation; different letters within bars indicate significant differences (Duncan's test,  $P < 0.05$ ).

showed significant differences. In BL1 and BL2, ORP values were positive, with respective values of  $185.75 \pm 9.64$  and  $98.25 \pm 4.50$   $\text{mg l}^{-1}$ . This was inconsistent with BL3 and BL4 ponds, where the values were negative at  $-138.50 \pm 26.41$  and  $-108.75 \pm 14.98$   $\text{mg l}^{-1}$ , respectively.

#### *The relationship between nutrient quality and environmental factors in shrimp pond effluents with phytoplankton abundance*

Phytoplankton abundance was greatly influenced by the environmental conditions of the water. The strength of this relationship was analysed using PCA, and the graph illustrated the relationship between phytoplankton abundance and nutrients with

environmental variables. Each pond location had its characteristic relationship among the factors as presented in [Figure 4](#).

PCA at BL1, BL2, BL3, and BL4 locations explained the data variability on two axes, with respective percentages of 76.14, 72.71, 74.42, and 78.09. The PCA results structured the cumulative variance of nutrient and environmental quality on the first and second axes as follows: 46.62% (F1) and 29.52% (F2) for BL1 location, 42.04% (F1) and 30.68% (F2) for BL2 location, 42.14% (F1) and 32.28% (F2) for BL3 location, and 43.78% (F1) and 34.31% (F2) for BL4 location.

Phytoplankton abundance at BL1, BL2, BL3, and BL4 was strongly influenced by orthophosphate ( $\text{PO}_4$ ), nitrate ( $\text{NO}_3$ ), and magnesium (Mg). At BL4, in addition to these factors, the abundance was also influenced by calcium. The Pearson



**Table 6.** Characteristics of physical and chemical parameters in the effluent of vannamei shrimp ponds in the northern coast of Bangka Island

Parameter	Unit	Shrimp pond locations			
		BL1	BL2	BL3	BL4
Salinity	ppt	24.25 ± 2.87 <sup>a</sup>	18.25 ± 0.50 <sup>b</sup>	26.50 ± 2.38 <sup>a</sup>	19 ± 0.82 <sup>b</sup>
Temperature	°C	27.93 ± 0.51 <sup>a</sup>	27.60 ± 0.27 <sup>a</sup>	27.98 ± 0.84 <sup>a</sup>	28.30 ± 0.32 <sup>a</sup>
TSS	mg l <sup>-1</sup>	122 ± 8.287 <sup>a</sup>	106.33 ± 3.68 <sup>a</sup>	262 ± 60.15 <sup>b</sup>	116.4 ± 36.45 <sup>a</sup>
pH	–	7.14 ± 0.09 <sup>a</sup>	7.03 ± 1.03 <sup>a</sup>	7.01 ± 0.19 <sup>a</sup>	6.61 ± 0.56 <sup>a</sup>
DO	mg l <sup>-1</sup>	6.83 ± 0.33 <sup>a</sup>	6.55 ± 1.51 <sup>ac</sup>	4.05 ± 1.52 <sup>b</sup>	4.88 ± 0.54 <sup>bc</sup>
Ca	mg l <sup>-1</sup>	412 ± 6.33 <sup>a</sup>	411 ± 10.63 <sup>a</sup>	412 ± 12.75 <sup>a</sup>	404 ± 9.57 <sup>a</sup>
Mg	mg l <sup>-1</sup>	949 ± 21.56 <sup>a</sup>	979 ± 11.48 <sup>a</sup>	957 ± 20.52 <sup>a</sup>	954 ± 38.83 <sup>a</sup>
ORP <sub>bottom</sub>	Mv	185.75 ± 9.64	98.25 ± 4.50	–138.50 ± 26.41	–108.75 ± 14.98

Different superscript letters between the columns indicate significant differences in values (Duncan's test,  $P < 0.05$ ).

correlation coefficients ( $n$ ) derived from the relationship between phytoplankton abundance and orthophosphate, nitrate, and magnesium at BL1 location were 0.998, 0.513, and 0.897, respectively. At BL2, the correlation coefficients between phytoplankton abundance and orthophosphate, nitrate, and magnesium were 0.907, 0.844, and 0.856, respectively. In BL3 location, the coefficients obtained with orthophosphate, magnesium, and nitrate were 0.964, 0.957, and 0.747, respectively. Furthermore, when examining phytoplankton abundance at BL4 location, the correlation coefficients with orthophosphate, nitrate, magnesium, and calcium were 0.924, 0.925, 0.700, and 0.700, respectively. Positive correlation values exceeding 0.5 showed a robust positive relationship, as evidenced by the close association between these variables.

## Discussion

The treatment of waste in the WTPs at BL1, BL2, BL3, and BL4 locations was still relatively simple and partial and had not comprehensively treated the wastewater generated from production ponds. Furthermore, WTPs in all locations were the only ponds with a sedimentation system. According to Syah *et al.* (2017), WTPs must consist of sedimentation, aeration, and equalization ponds. The ponds located at the study site exclusively used the system to minimize production expenses. Sedimentation ponds were reservoirs designed for the physical treatment of solid waste materials, to diminish the concentration of suspended solids through the process of settling. The underlying principle comprised of creating an obstruction to decelerate the movement of the wastewater, thereby prolonging the duration of travel and facilitating the deposition of solid particles.

The types and abundance of phytoplankton in each water location depended on the nutrient content present in the water. The abundance of phytoplankton in the ponds was influenced by the chemical and physical factors of the observed water quality and nutrient content. The presence and abundance of phytoplankton communities in aquatic environments were affected by the contributions made by individual phytoplankton species in the water body. Phytoplankton was expected to continue growing in response to external stimuli, such as light, temperature, and nutrient concentrations present in the aquatic environment (Palupi *et al.*, 2023).

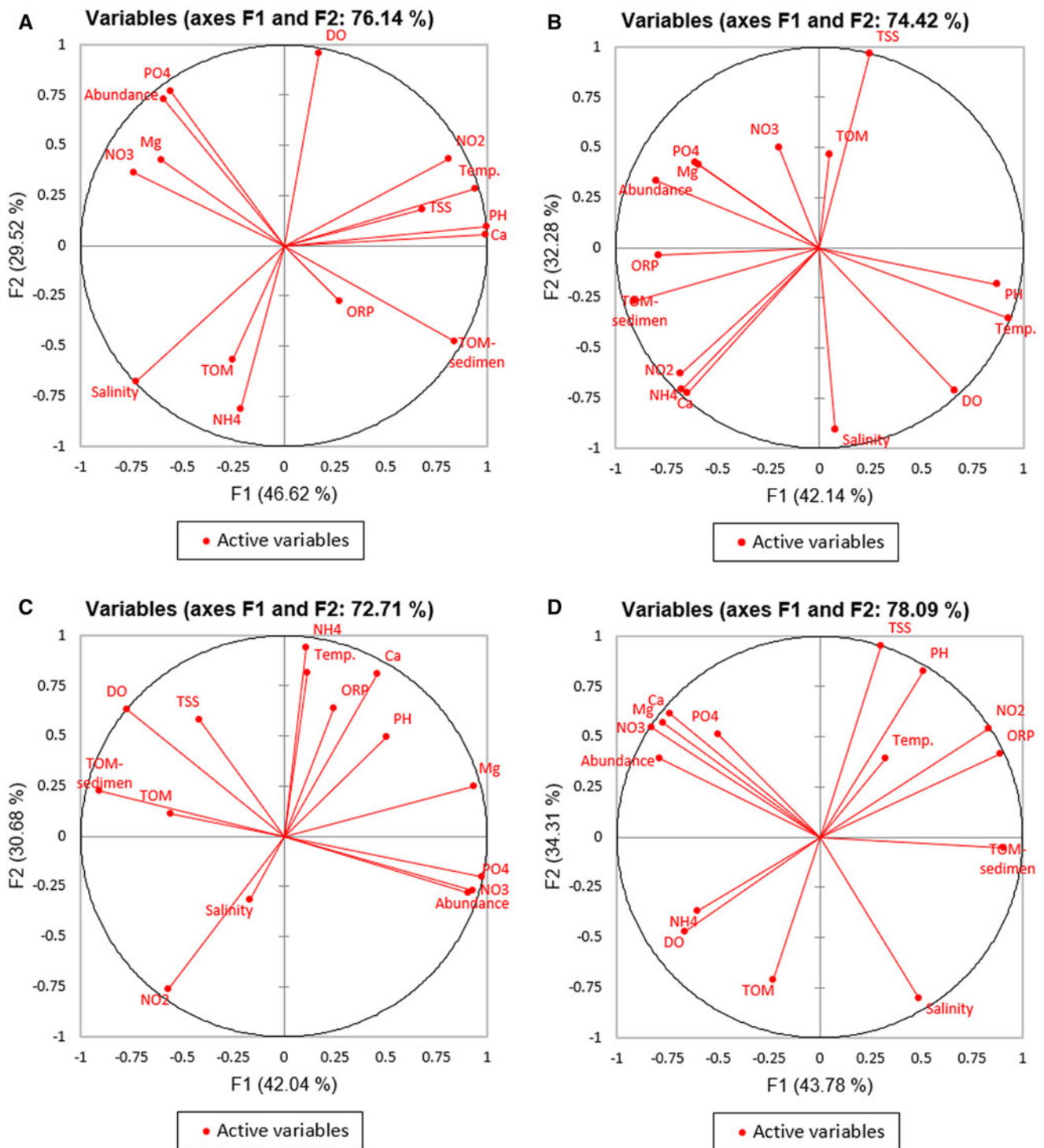
The higher the presence of organic matter in the ponds, the higher the abundance of phytoplankton (Huang *et al.*, 2022). The high abundance at BL3 (Table 3) was attributed to the higher content of nutrient compounds in the form of ammonium, nitrate, and orthophosphate compared to other locations

(Figure 3A, C, and D). The concentration of TOM in the water at BL3 was high and statistically not significantly different from that at BL2 and BL4 (Figure 3E). The results of this study also showed that the sediment TOM concentration was also higher, as shown in Figure 3F. This condition showed a greater production activity, capacity, and organic matter retention of vannamei shrimp production. Sediment TOM had a significant contribution to the presence of nitrogen and phosphorus in the water column (Rozpondek *et al.*, 2017). High nutrient concentrations within a certain range could increase the abundance of phytoplankton (Miao *et al.*, 2019). Nutrient compounds served as food sources and were the primary factors influencing the growth of these organisms. The effluent from vannamei shrimp production ponds contained high levels of organic matter (TOM), both in the water column and concentrated in the sediment (Jasmin *et al.*, 2020). The shrimp pond effluent in the form of nitrogen compounds (ammonium, nitrite, and nitrate) was formed from the decomposition of organic matter, containing proteins (Jimenez-Ojeda *et al.*, 2018).

High nitrogen (ammonium and nitrate) and phosphorus (orthophosphate) content in the wastewater had been reported to stimulate phytoplankton biomass production, with the proportions of these components playing an important role (Beuckels *et al.*, 2015). Ammonium was an ionized form of ammonia that could be directly assimilated by phytoplankton (Klawonn *et al.*, 2019). The source of ammonia in shrimp ponds came from protein metabolism in the body, faeces, unconsumed feed, and dead organisms that settled at the bottom (Setyastuti *et al.*, 2020). Ammonia could undergo oxidation and decomposition processes comprising nitrifying bacteria to form nitrite. Furthermore, nitrite was a transitional form in the conversion of ammonia to nitrate. According to previous studies, nitrate was a nutrient compound or essential element required by phytoplankton for growth (Wijaya and Elfiansyah, 2022). The results showed that orthophosphate was the simplest form of dissolved phosphorus and could be directly absorbed by the organisms (Maslukah *et al.*, 2020). Phosphorus was an important metabolite present in commercial shrimp feed, along with nitrogen. The presence of phosphorus in ponds was sourced from the decomposition of unconsumed feed and undigested phosphorus from shrimp faeces (Sari *et al.*, 2022).

The high nitrogen compounds in the wastewater could support phytoplankton biomass production because these compounds were macronutrients required for the synthesis of amino acids, proteins, nucleic acids, and other nitrogen-containing compounds (Hawrot-Paw *et al.*, 2020). Apart from nitrogen, phosphorus was also a limiting factor for phytoplankton growth. The nutrient was





**Figure 4.** PCA biplot analysis of the relationship between phytoplankton abundance and environmental variables: (A) BL1 location, (B) BL2 location, (C) BL3 location, and (D) BL4 location.

required for cell metabolism, phospholipid, and nucleic acid production, as well as energy transfer (Han *et al.*, 2019). When nitrogen and phosphorus supplies were high, phytoplankton accumulated more nitrogen and phosphorus in its biomass, leading to increased cell division and higher biomass productivity (Beuckels *et al.*, 2015).

The higher abundance of Chlorophyta compared to other phytoplankton groups at BL1, BL2, BL3, and BL4 (Table 3) was consistent with studies by Juliyanto *et al.* (2021), Kamilia *et al.* (2021), and Palupi *et al.* (2023) who studied their abundance in intensive vannamei shrimp ponds at various locations in Indonesia. The use of commercial feed in aquaculture activities

served as an important source of minerals in ponds, specifically phosphorus, which was a key nutrient for promoting the growth of the Chlorophyta group (Cremen *et al.*, 2007). Chlorophyta was the most diverse group of algae with high reproductive capabilities compared to other groups (Adesalu, 2015). This group could adapt physiologically and behaviourally, allowing them to tolerate environmental changes better than others (Palupi *et al.*, 2023).

Nanochloropsis and Chlorella were phytoplankton species in the Chlorophyta group that were consistently present and had a higher abundance compared to others at BL1, BL2, BL3, and BL4 (Table 4). These species were cosmopolitan, grew rapidly, and could thrive in a wide range of salinity levels

(Rendon-Castrillon *et al.*, 2021; Santri *et al.*, 2021). Plankton could also adapt to abnormal conditions in their habitats (Soeprapto *et al.*, 2023). Cao *et al.* (2014) found that the use of probiotics in vannamei shrimp production ponds was a major factor supporting the growth of Chlorophyta, specifically the genera *Nannochloropsis* and *Chlorella*. Furthermore, probiotic supplementation could enhance the growth of *Nannochloropsis* and *Chlorella* species from the Chlorophyta group compared to others. Intensive ponds always used bioaugmentation by adding probiotic bacteria during the production process. Probiotic bacteria were regularly used in the production to enhance its efficiency. In addition to enhancing shrimp growth and immunity, the use of probiotics had positive effects on water quality and promoted the growth of beneficial phytoplankton (Amiin *et al.*, 2023).

The composition of phytoplankton was due to their adaptation to the aquatic environment. Different environmental conditions and nutrient availability lead to variations in composition, dominant species, density, and biomass (Miao *et al.*, 2019). The diversity of these organisms was influenced by the biotic and abiotic factors within a pond, which affected the aquaculture ecosystem (Yang *et al.*, 2020). Physical and chemical factors of the water, nutrient availability, and the use of different nutrients by individual phytoplankton could affect the diversity index value (Vesensia *et al.*, 2021). An environment experiencing pressure or disturbance was typically characterized by a moderate diversity index value (Sulihitia *et al.*, 2022). The moderate diversity index at BL1, BL2, BL3, and BL4 (Table 5) showed that the dispersion ability of individuals, nutrient use, and engagement in the ecological processes of each phytoplankton species was considered moderate. The stability of the formed phytoplankton community was also considered to be at the same level. Based on these findings, the water quality conditions, despite experiencing pressure or disturbance, were still capable of supporting phytoplankton growth.

The high evenness index at BL1, BL2, BL3, and BL4 (Table 5) showed that the abundance of each species was relatively equal, and there was no dominance of a particular group. The high evenness of phytoplankton in shrimp ponds was attributed to sufficient light intensity and water flow (Palupi *et al.*, 2023). The characteristics of the WTPs at all study locations showed a shallow depth (50–100 cm) with continuous water flow and current. This allowed the WTPs at these locations to receive sufficient sunlight intensity and adequate water flow. The high value of the evenness index showed that there was no dominance of one phytoplankton individual over others, despite the higher percentage of *Nannochloropsis* and *Chlorella* (Table 4). Furthermore, the distribution of individuals tended to be more uniform, and each of them had an equal opportunity to use the available nutrients (nitrate and phosphate) in the water, even when their quantity was limited (Odum, 1998).

The results showed that the dominance of phytoplankton was not found at all locations (Table 5). This shows that the wastewater from shrimp ponds was at a moderate level of contamination and did not significantly impact the presence of phytoplankton. The low value of the dominance index suggested that the phytoplankton community structure was still relatively stable, the environment was sufficiently supportive, and the ecological pressure on biota in the habitat was not too high (Sari *et al.*, 2022). A value approaching zero showed that within the phytoplankton community structure, there were no species with significant dominance over others. All types of phytoplankton had equal abilities and opportunities to use resources in their environment, and the structure of the community remained relatively stable (Sulihitia *et al.*, 2022). The prominence of a certain species could show pollution or poor water quality, where only specific organisms could adapt to such conditions. Improper use of probiotics in intensive shrimp ponds often led to the prominence of these organisms in waste

discharge. However, the appropriate use of probiotics in the correct amount and dosage suppressed their dominance in water bodies (Kawman *et al.*, 2022).

All environmental factors influenced the abundance of phytoplankton, with some exerting a stronger impact compared to others. These conditions were influenced, in part, by location differences, characteristics, and concentrations of nutrients, as well as the overall environmental quality in each water location (Zhang *et al.*, 2021). Pond waste referred to organic waste generated during aquaculture activities, including uneaten feed from shrimp farming, remained unabsorbed, and was expelled as faeces, as well as excretions during routine maintenance (Paena *et al.*, 2020). The decomposition of this organic solid waste led to the release of simple nutrient compounds, both macro and micro minerals, which served as essential elements facilitating the growth of microalgae in aquatic environments (Juliyanto *et al.*, 2021). Complex organic matter, comprising proteins, carbohydrates, fats, and minerals, underwent degradation by microorganisms into simpler inorganic compounds, such as nitrogen, phosphate, carbon, sulphur, calcium, magnesium, and various other minerals (Karyaningsih, 2018). Among these compounds, nitrogen and phosphate were the primary factors with an essential role in stimulating phytoplankton growth (Klochenko *et al.*, 2019).

Based on the PCA in Figure 4, BL1, BL2, BL3, and BL4 exhibited similarities in nutrient parameters and environmental factors, which strongly influenced phytoplankton abundance, namely orthophosphate, nitrate, and magnesium. Nitrate and orthophosphate were nutrients (nitrogen and phosphorus) that could be directly absorbed and used by all species (Braga *et al.*, 2017). Furthermore, these nutrients were major components that played an essential role in the growth and metabolism of phytoplankton (Rustiah *et al.*, 2019). Each of these organisms required nitrogen and phosphorus. Nitrogen was an essential nutrient for phytoplankton and served as a major component of proteins, nucleic acids, chlorophyll, amino acids, N-containing osmolytes (such as glycine betaine), and chitin (Hasegawa *et al.*, 2013). Phosphorus was an important nutritional component that participated in the formation of biomolecules, such as nucleic acids, proteins, and phospholipids. However, the most important role was in energy transfer mediated by adenosine triphosphate (ATP) and other high-energy compounds found in photosynthesis and respiration (Lin *et al.*, 2016). Magnesium was the most essential element required for the optimal growth of phytoplankton, and its efficiency could be maximized through complexation with nitrate. This nutrient was required for growth and development, and played a crucial role in chlorophyll molecules that affected the activity of photosynthesis enzymes (Carvalho *et al.*, 2011). The presence of nitrate and orthophosphate had a strong relationship with phytoplankton abundance in all shrimp ponds, owing to the crucial role of these compounds as the primary nutrient sources for phytoplankton growth. Magnesium also had an important contribution, particularly in relation to phytoplankton photosynthesis. A study by Encarnacao *et al.* (2012) showed that metal ions, such as iron and magnesium, played an important role in photosynthesis. In particular, magnesium occupied a strategic position as a central element of the chlorophyll molecule, and all microalgal species had an absolute need for this element. Furthermore, it also had a function in the aggregation of ribosomes in functional units and the formation of catalase.

## Conclusion

In conclusion, the abundance of phytoplankton in all discharge locations of vannamei shrimp farms in the northern coastal area of Bangka Island showed levels of abundance above

1,000,000 cells ml<sup>-1</sup>. Furthermore, the highest abundance was recorded at location BL3, reaching 2,418,375 cells ml<sup>-1</sup>. Several groups of phytoplankton were found in all shrimp ponds, including Chlorophyta, Cyanophyta, Chryptophyta, Bacillariophyta, and Pyrrophyta. The most abundant group was Chlorophyta, with the highest percentage of the genus *Nanochloropsis*. The values of diversity index, evenness, and dominance at all shrimp ponds show the same levels, with moderate diversity, high evenness, and no dominance. The nutrient characteristics (ammonium, nitrate, and orthophosphate) at BL3 showed the highest concentrations compared to other locations. The same parameters, namely nitrate, orthophosphate, and magnesium, strongly influenced the abundance of phytoplankton at all shrimp pond discharge locations.

**Data availability.** The data that support the findings of this study are available from the corresponding author, upon reasonable request.

**Acknowledgements.** The authors are grateful to Balai Pembinaan Pendidikan Tinggi (BPPT), Kemendikbudristek, and Lembaga Pengelola Dana Pendidikan (LPDP). The authors are also grateful to IPB University, Bangka Belitung University, and individuals who participated conditionally or unconditionally in this study.

**Author contributions.** All authors have contributed equally to data collection, data analysis, writing, reviewing, editing, and finally, approving the final manuscript.

**Financial support.** This study was funded by Balai Pembinaan Pendidikan Tinggi (BPPT), Kemendikbudristek (SK No. 1232/J5.2.3./BPI.06/10/2021).

**Competing interests.** None.

## References

- Adesalu TA (2015) Diversity of green microalgae in south-western lagoon, Nigeria. *Journal of Scientific Research & Development* **15**, 14–19.
- American Public Health Association (APHA) (2017) *Standard Methods for the Examination of Water and Wastewater*, 23rd Edn. Washington, DC: American Works Association, Water Environment Federation.
- Amiin MK, Lahay AF, Putriani RB, Reza M, Putri SME, Sumon MAA, Jamal MT and Santanumurti MB (2023) The role of probiotics in vannamei shrimp aquaculture performance – a review. *Veterinary World* **16**, 638–649.
- Ayisi CL, Hua X, Apraku A, Afriyie G and Kyei BA (2017) Recent studies toward the development of practical diets for shrimp and their nutritional requirements. *Hayati Journal of Biosciences* **24**, 109–117.
- Beuckels A, Smolders E and Muylaert K (2015) Nitrogen availability influences phosphorus removal in microalgae-based wastewater treatment. *Water Research* **77**, 98–106.
- Bosman O, Soesilo TEB and Rahardjo S (2021) Pollution index and economic value of vannamei shrimp (*Litopenaeus vannamei*) farming in Indonesia. *Indonesian Aquaculture Journal* **16**, 51–60.
- Braga ES, Berbel GBB, Chiozzini VG and Andrade NCG (2017) Dissolved organic nutrients (C, N, P) in seawater on the continental shelf in the south-western South Atlantic with emphasis State Marine Park of Laje de Santos (SMPLS) – Sao Paulo – Brazil. *Brazilian Journal of Oceanography* **65**, 614–627.
- Cao YC, Wen GL, Li ZJ, Liu XZ, Hu XJ, Zhang JS and He JG (2014) Effects of dominant microalgae species and bacterial quantity on shrimp production in the final culture season. *Journal of Applied Phycology* **26**, 1749–1757.
- Carvalho AP, Silva SO, Baptista JM and Malcata FX (2011) Light requirements in microalgal photobioreactors: an overview of biophotonic aspects. *Applied Microbiology and Biotechnology* **89**, 1275–1288.
- Chiquito-Contreras RG, Hernandez-Adame L, Alvarado-Castillo G, Martínez-Hernández MDJ, Sanchez-Viveros G, Chiquito-Contreras CJ and Hernandez-Montiel LG (2022) Aquaculture-production system and waste management for agriculture fertilization – a review. *Sustainability* **14**, 1–13.
- Cremon MCM, Martinez-Goss MR, Corre JVL and Azanza RV (2007) Phytoplankton bloom in commercial shrimp ponds using green-water technology. *Journal of Applied Phycology* **19**, 615–624.
- Cui J, Jin Z, Wang Y, Gao S, Fu Z, Yang Y and Wang Y (2021) Mechanism of eutrophication process during algal decomposition at the water/sediment interface. *Journal of Cleaner Production* **309**, 127–175.
- Dauda AB, Ajadi A, Tola-Fabunmi AS and Akinwole AO (2019) Waste production in aquaculture: sources, components and managements in different culture systems. *Aquaculture and Fisheries* **4**, 81–88.
- Emerenciano MGC, Rombenso AN, Vieira FN, Martins MA, Coman GJ, Truong HH, Noble TH and Simon JC (2022) Intensification of Penaeid shrimp culture: an applied review of advances in production systems, nutrition and breeding. *Animals* **2**, 1–39.
- Encarnacao T, Burrows HD, Pais AC, Campos MG and Kremer A (2012) Effect of N and P on the uptake of magnesium and iron and on the production of carotenoids and chlorophyll by the microalgae *Nanochloropsis* sp. *Journal of Agricultural Science and Technology A* **2**, 824–832.
- Han P, Lu Q, Fan L and Zhou W (2019) A review on the use of microalgae for sustainable aquaculture. *Applied Science* **9**, 1–20.
- Hasegawa H, Rahman M, Kato S, Maki T and Rahman M (2013) Potential of proteins and their expression level in marine phytoplankton (*Prymnesium parvum*) as biomarker of N, P and Fe conditions in aquatic systems. *Advances in Biological Chemistry* **3**, 338–346.
- Hawrot-Paw M, Koniuszy A, Galczyńska M, Zajac G and Szyzlak-Barglowicz J (2020) Production of microalgal biomass using aquaculture wastewater as growth medium. *Water* **12**, 1–11.
- Hossain MA, Sarker AK, Amin MN, Hossain MM and Miah MS (2016) Development and performance evaluation of sludge remover for intensive aquaculture. *Aquacultural Engineering* **74**, 62–69.
- Huang C, Luo Y, Zeng G, Zhang P, Peng R, Jiang X and Jiang M (2022) Effect of adding microalgae to whiteleg shrimp culture on water quality, shrimp development and yield. *Aquaculture Reports* **22**, 1–16.
- Iber BT and Kasan NA (2021) Recent advances in shrimp aquaculture wastewater management. *Heliyon* **7**, 1–9.
- Jasmin MY, Syukri F, Kamarudin MS and Karim M (2020) Potential of bio-remediation in treating aquaculture sludge. *Aquaculture* **519**, 1–5.
- Jimenez-Ojeda YK, Collazos-Lasso LF and Arias-Castellanos JA (2018) Dynamics and use of nitrogen in biofloc technology-BFT. *AACL Bioflux* **11**, 1107–1129.
- Juliyanto NAW, Maftuch and Masithah ED (2021) Analysis of phytoplankton diversity on the productivity of vannamei shrimp (*Litopenaeus vannamei*) intensive pond, Jatisari Village, Banyuwangi. *The Journal of Experimental Life Science* **11**, 26–33.
- Kamilia H, Sasmito BB and Masithah ED (2021) Phytoplankton and its relationship to white leg shrimp (*Litopenaeus vannamei*) culture productivity in Alasbulu, Banyuwangi. *The Journal of Experimental Life Sciences* **11**, 43–48.
- Karyaningsih I (2018) Types of organisms decomposers of soil pollutants. *Journal of Forestry and Environment* **1**, 16–21.
- Kawman K, Uppabullung A, Kaewtawee T and Sangnoi YI (2022) Effect of probiotic used on phytoplankton community structure in white shrimp (*Litopenaeus vannamei*) pond. *ASEAN Journal of Scientific and Technological Reports* **25**, 39–49.
- Klawonn I, Bonaglia S, Whitehouse MJ, Littmann S, Tienken D, Kuypers MMM, Bruchert V and Ploug H (2019) Untangling hidden nutrient dynamics: rapid ammonium cycling and single-cell ammonium assimilation in marine plankton communities. *The ISME Journal* **13**, 1960–1974.
- Klochenko P, Shevchenko T, Nezbrtyskaya IN and Bilous O (2019) Phytoplankton production and decomposition characteristics in water bodies differing in the degree of their contamination by inorganic compounds of nitrogen and phosphorus. *Hydrobiological Journal* **55**, 29–43.
- Lee C and Lee KJ (2018) Dietary protein requirement of Pacific white shrimp *Litopenaeus vannamei* in three different growth stages. *Fisheries and Aquatic Sciences* **21**, 1–6.
- Lestari HA, Samawi MF, Faizal A, Moore AM and Jompa J (2021) Diversity and abundance of phytoplankton in the coastal waters of South Sulawesi. *Hayati Journal of Biosciences* **28**, 199–211.
- Lin S, Litaker RW and Sunda WG (2016) Phosphorus physiological ecology and molecular mechanisms in marine phytoplankton. *Journal of Phycology* **52**, 10–36.
- Maslukah L, Zainuri M, Wirasatriya A and Widiaratih R (2020) Studi kinetika adsorpsi dan desorpsi ion fosfat (PO<sub>4</sub><sup>3-</sup>) di sedimen perairan Semarang dan Jepara. *Jurnal Ilmu dan Teknologi Kelautan Tropis* **12**, 383–394.
- Melian JAH (2020) Sustainable wastewater treatment systems (2018–2019). *Sustainability* **12**, 1–5.



- Miao X, Wang S, Liu M, Ma J, Hu J, Li T and Chen L (2019) Changes in the phytoplankton community structure of the backshore wetland of Expo Garden, Shanghai from 2009 to 2010. *Aquaculture and Fisheries* **4**, 198–204.
- Mohd S, Gafur A, Hartanto and N, Sirajuddin, Anshar, Sabar, Arsyad and Zaenal (2019) Perbaikan manajemen operasional IPAL pada tambak udang vaname intensif. *Jurnal Perencanaan Budidaya Air Payau* **5**, 121–137.
- Mustafa S, Estim A, Shaleh SRM and Shapawi R (2018) Positioning of aquaculture in blue growth and sustainable development goals through new knowledge, ecological perspectives and analytical solutions. *Aquacultura Indonesiana* **19**, 1–9.
- Odum EP (1998) *Dasar-Dasar Ekologi. Edisi Ke-3*. Yogyakarta: Gadjah Mada University Press, pp. 201–250.
- Paena M, Syamsuddin R, Rani C and Tandipayuk H (2020) Estimasi beban limbah organik dari tambak udang superintensif yang terbuang di perairan Teluk Labuange. *Jurnal Ilmu dan Teknologi Kelautan Tropis* **12**, 507–516.
- Palupi M, Fitriadi R, Kasprijo and Malfa Y (2023) Phytoplankton community in vannamei shrimp (*Litopenaeus vannamei*) cultivation in intensive ponds. *Iraqi Journal of Agricultural Sciences* **54**, 134–146.
- Patil PK, Antony L, Avunje S, Viswanathan B, Lalitha N, Jangam AK, Kumar D, Solanki HG, Reddy MA and Vinayakarao A (2021) Bioaugmentation with nitrifying and denitrifying microbial consortia for mitigation of nitrogenous metabolites in shrimp ponds. *Aquaculture* **541**, 1–10. doi:10.1016/j.aquaculture.2021.73
- Prasetyono E, Bidayani E, Robin and Syaputra D (2022) Analisis kandungan nitrat dan fosfat pada lokasi buangan limbah tambak udang vaname (*Litopenaeus vannamei*) di Kabupaten Bangka Tengah Provinsi Kepulauan Bangka Belitung. *Saintek Perikanan* **18**, 73–79.
- Rachmansyah, Makmur, Tauhid I, Tampangallo BR, Tahe S and Undu MC (2021) The application of progressive systems in high density vannamei shrimp culture. *4th International Symposium on Marine Science and Fisheries*. Makassar, Indonesia, 5–6 June 2021, 1–15.
- Ramos JB, Schulz KB, Voss M, Narciso A, Muller MN, Reis FV, Cachao M and Azevedo EB (2017) Nutrient-specific responses of a phytoplankton community: a case study of the North Atlantic Gyre, Azores. *Journal of Plankton Research* **39**, 744–761.
- Rendon-Castrillon L, Ramirez-Carmona M, Ocampo-Lopez C and Giraldo-Aristizabal R (2021) Evaluation of the operational conditions in the production and morphology of *Chlorella* sp. *Brazilian Journal of Biology* **81**, 202–209.
- Rozpondek K, Rozpondek R and Pachura P (2017) Characteristics of spatial distribution of phosphorus and nitrogen in the bottom sediments of the water reservoir Poraj. *Journal of Ecological Engineering* **18**, 178–184.
- Rustiah W, Noor A and Lukman M (2019) Distribution analysis of nitrate and phosphate in coastal area: evidence from Pangkep River, South Sulawesi. *International Journal of Agriculture System* **7**, 9–17.
- Santri DJ, Zulkifli H, Lesbani A, Hermansyah, Anwar Y, Ermayanti, Meylani V and Fudholi A (2021) Analysis of swamp microalgal isolates from South Sumatra as biofuel candidates. *International Journal of Design & Nature and Ecodynamics* **16**, 625–630.
- Sari A, Tuwo A, Rani C, Saru A and Prayitno Y (2022) Abundance and diversity of phytoplankton and zooplankton in waters of Youtefa Bay tourism area. *Jurnal Segara* **18**, 151–158.
- Setyastuti TA, Puspitasari I, Sukanto D and Asmarany A (2020) Kelimpahan bakteri heterotrof pada tambak dengan jenis mangrove yang berbeda di Pulokerto Pasurua. *Jurnal Chanos Chanos* **18**, 7–17.
- Soeprapto H, Ariadi H and Badrudin U (2023) The dynamics of *Chlorella* spp. abundance and its relationship with water quality parameters in intensive shrimp ponds. *Biodiversitas: Journal of Biological Diversity* **24**, 2919–2926.
- Stafford C (1999) *A Guide to Phytoplankton of Aquaculture Ponds: Collection, Analysis and Identification*. Brisbane: Department of Primary Industry, The State of Queensland, pp. 5–50.
- Sulihitia N, Hasan Z, Hetiherawati and Arief MCW (2022) Structure community phytoplankton in Cikidang river, Pangandaran City, Indonesia. *Asian Journal of Fisheries and Aquatic Research* **20**, 21–29.
- Supono (2021) Current status of technical and economic analysis of inland shrimp culture in Lampung Province, Indonesia. *AAFL Bioflux* **14**, 218–226.
- Syah R, Fahrur M, Suwoyo and HS and Makmur (2017) Performansi instalasi pengolah air limbah tambak superintensif. *Media Akuakultur* **12**, 95–103.
- Tantu AG, Salam S and Ishak M (2020) Vaname shrimp cultivation (*Litopenaeus vannamei*) on high stocking densities in controlled ponds. *Journal of Aquaculture Research & Development* **11**, 1–6.
- Thakar MK, Luthra D and Khattar JS (2018) Forensic studies of phytoplankton ecology of two water bodies of Kurukshetra area of Haryana, State in India. *Egypt Journal Forensic Sciences* **8**, 1–15.
- Vesensia O, Arthana IW and Dewi APWK (2021) Abundance of plankton in the waters of Geger Beach, Badung Regency, Bali. *Advances in Tropical Biodiversity and Environmental Sciences* **5**, 103–108.
- Wijaya NI and Elfiansyah M (2022) The influence of nitrate and phosphate concentration on the abundance of plankton at the estuary of Bengawan Solo, Gresik, East Java. *AAFL Bioflux* **15**, 83–95.
- Yang W, Zhu J, Zheng C, Lukwambe B, Nicholas R, Lu K and Zheng Z (2020) Succession of phytoplankton community during intensive shrimp (*Litopenaeus vannamei*) cultivation and its effects on cultivation systems. *Aquaculture* **520**, 1–18, 734733.
- Zein R, Nurdin J, Rianto DR and Ramadhani P (2023) Environmental management approach: the impact of a wastewater treatment plant for shrimp ponds on Carocok Anau River water quality. *AAFL Bioflux* **16**, 1531–1548.
- Zhang Y, Gao W, Li Y, Jiang Y, Chen X, Yao Y, Messyas B, Yin K, He W and Chen Y (2021) Characteristics of the phytoplankton community structure and water quality evaluation in autumn in the Huaihe River (China). *International Journal of Environmental Research and Public Health* **18**, 1–15.