



Experiments on transient growth of turbulent spots

L. Klotz^{1,2,3,†} and J. E. Wesfreid^{1,2,3,†}

¹Physique et Mécanique des Milieux Hétérogènes (PMMH), CNRS, ESPCI, PSL Research University, 10 rue Vauquelin, 75005 Paris, France

²Paris-Sorbonne Université, 1 rue Victor-Cousin, 75005 Paris, France

³Université Paris-Diderot, 5 rue Thomas-Mann, 75013 Paris, France

(Received 22 May 2017; revised 21 July 2017; accepted 28 August 2017; first published online 26 September 2017)

We present detailed experiments on transient growth of turbulent spots induced by external forcing in plane Couette–Poiseuille flow, which are studied in the framework of linear transient growth. The experimental investigation is supplemented with full theoretical analysis. We compare quantitatively the experimental and theoretical results, including maximal gain and the time at which it occurs. We also present the limits of validity for the application of the linear theory at high amplitude perturbation and Reynolds number, showing experiments with self-sustained states.

Key words: instability, transition to turbulence

1. Introduction

The classical problem of a localized turbulent spot and its role in subcritical transition to turbulence has been investigated in many classical wall-bounded shear flows, such as water tables, boundary layers, pipes, channel and Couette flows (Schmid & Henningson 2001). In contrast, plane Couette–Poiseuille flow has received little attention up to now. Specifically, the first observation of turbulent spots in this flow was described recently in Klotz *et al.* (2017), where the spots were generated by permanent perturbation. Here we study the temporal dynamics and spatial structure of a spot triggered by an instantaneous water jet impulse in the crossflow.

Our experimental set-up is a generalization of the classical plane Couette facility (Tillmark & Alfredsson 1991; Daviaud, Hegseth & Bergé 1992), in which we combine Couette and Poiseuille components to obtain a base flow with zero mass flux. This increases the time during which the turbulent spot stays within the test section and enables us to study its evolution for longer times. A similar velocity profile in a

† Email addresses for correspondence: lukasz.klotz@espci.fr, wesfreid@pmmh.espci.fr

different experimental configuration (a driven cavity in which a test section is slid past a stationary plane surface) was investigated by Tsanis & Leutheusser (1988).

There exists an extensive body of theoretical and numerical work on linear transient growth, which is explained by the non-normal nature of the linearized Navier–Stokes equation (Schmid & Henningson 2001 and references therein). Specifically, Henningson, Lundbladh & Johansson (1993) investigated numerically the evolution of a localized turbulent structure in plane Poiseuille flow. However, the experimental evidence for these phenomena is much more sparse. Transient amplification of a localized perturbation followed by subsequent decay was observed experimentally in pipes (Bergström 1995) and plane Poiseuille flow (Klingmann & Alfredsson 1991; Klingmann 1992; Elofsson, Kawakami & Alfredsson 1999; Philip, Svizher & Cohen 2007). Reshotko (2001) compared the experimental results for the time at which the perturbation reaches the maximal energy gain with the prediction of linear theory.

A spatial formulation (in contrast to growth in time) of transient growth theory describing the spatial evolution of the perturbation in boundary layer flow can be found for example in Andersson, Berggren & Henningson (1999). A similar evolution was also measured experimentally: Westin *et al.* (1998) investigated the response to the impulsive perturbation and showed that after initial amplification of the streaks, their amplitude eventually decays as they are advected downstream. In addition, the amplification of the streaks was studied in a boundary layer subjected to external forcing, e.g. freestream turbulence (Westin *et al.* 1994; Matsubara & Alfredsson 2001), vortex generators (White 2002; Duriez, Aider & Wesfreid 2009; Denissen & White 2013) and in the case of Görtler vortices (Aider & Wesfreid 1996; Petitjeans & Wesfreid 1996).

In our experiment the turbulent spots have nearly zero advection velocity, which enables us to measure the full instantaneous spatial structure of a localized turbulent spot, as well as its temporal evolution, and to directly compare our results with temporal theoretical predictions of transient growth. A similar approach was carried out semi-quantitatively in a cylinder wake (Marais *et al.* 2011) and in plane Poiseuille flow (Lemoult, Aider & Wesfreid 2013).

In this paper, we first consider the theoretical analysis, including linear stability, transient growth dynamics and the threshold for unconditional stability of plane Couette–Poiseuille flow. Then, we report the first experimental study of transient growth in subcritical Couette–Poiseuille flow and compare it with the theoretical prediction, including energy gain of the perturbation. Finally, we examine realizations in which spots become self-sustained, beyond the regime described by the linear theory.

2. Theoretical analysis of plane Couette–Poiseuille flow

Here we study the linear stability of flow confined in a channel of gap $2h$. The numerical code provided by Hoepffner (2006) was used to define an Orr–Sommerfeld/Squire dynamical matrix representing the linearized Navier–Stokes equations. The streamwise and spanwise directions are assumed to be homogeneous and are expanded in a Fourier series. The wall-normal direction is discretized with Chebychev collocation.

All quantities are nondimensionalized by an appropriate combination of belt speed U_{belt} and half-gap h , with which we also define our Reynolds number $Re = U_{belt}h/\nu$ (ν is the kinematic viscosity). Nondimensionalized quantities are marked by a * subscript. We denote the streamwise, wall-normal and spanwise directions as x , y , z , respectively.

Experiments on transient growth of turbulent spots

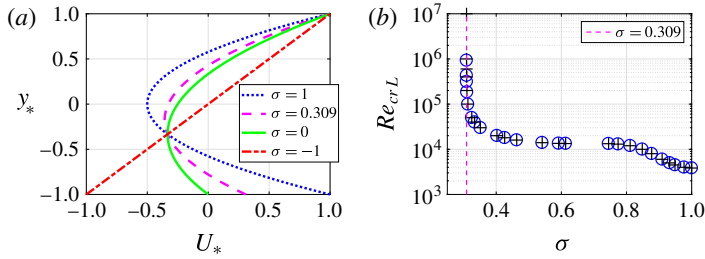


FIGURE 1. (a) Different velocity profiles of the flows (with zero flux, upper and lower velocity equal to 1 and σ , respectively) for which the linear stability to two-dimensional infinitesimal perturbation is analysed: plane Couette–Poiseuille (green line), Couette (red line), Poiseuille (blue line). The magenta profile ($\sigma = 0.309$) represents the case at which linear stability disappears. (b) Dependence of the linear instability threshold on the nondimensionalized speed of the lower wall. The black crosses are the results of Balakumar (1997).

2.1. Eigenvalue analysis of linear stability to two-dimensional infinitesimal perturbation

We parametrize the laminar Couette–Poiseuille flow family as:

$$U_*(y_*) = \frac{3}{4}(\sigma + 1)(y_*^2 - 1) + \frac{1 - \sigma}{2}(y_* - 1) + 1, \quad (2.1)$$

where $y_* \in (-1, 1)$ (see figure 1). This equation is derived by assuming a generic quadratic function with zero net flux and boundary conditions such that $U_*(1) = 1$, $U_*(-1) = \sigma$, $\sigma \in (-1, 1)$. The plane Couette–Poiseuille flow analysed in this paper corresponds to $\sigma = 0$ (green line in figure 1a). The two limiting cases, pure plane Poiseuille ($\sigma = 1$) and Couette ($\sigma = -1$) flows, are marked in figure 1(a) by blue and red curves, respectively. The linear stability was investigated by computing the least stable eigenvalue of the Orr–Sommerfeld operator. When σ is decreased, the critical Reynolds number Re_L , monotonically increases up to $\sigma = 0.309$, where it diverges to infinity ($Re_L \rightarrow \infty$, figure 1b). Our plane Couette–Poiseuille flow ($\sigma = 0$) is thus linearly stable for any Reynolds number, similar to plane Couette and pipe flow.

If we substitute $\sigma = 1 - 2\sigma_2$ and apply a Galilean transformation of -1 and reflection in x and y , we obtain the same formulation and results as in a previous study of Balakumar (1997).

2.2. Transient growth

Even if a shear flow is linearly stable, as in our case, a perturbation may grow transiently due to the non-normality of the linearized Navier–Stokes equations. In previous work, Bergström (2005) calculated transient growth in plane Couette–Poiseuille flow for a single Reynolds number $Re = 1000$ and for different combinations of Couette and Poiseuille components. Here, we calculate for a range of Reynolds numbers $Re \in (100, 1000)$ the transient growth for plane Couette–Poiseuille flow with zero mass flux, given by $U_*(y_*) = (3/4)(y_*^2 - 1) + (y_* + 1)/2$. For each streamwise (α_*) and spanwise (β_*) wavenumber combination we determine the maximal gain G_{max} and the time t_{*max} at which it occurs. We define:

$$G_{max} = \max_{\mathbf{q}_0 \neq 0} \frac{\|\mathbf{q}(t_* = t_{*max})\|^2}{\|\mathbf{q}(t_* = 0)\|^2} = \frac{\|\mathbf{q}_{out}\|^2}{\|\mathbf{q}_{opt}\|^2}, \quad (2.2)$$

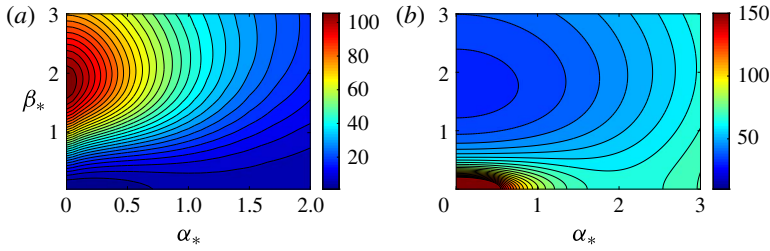


FIGURE 2. The dependence on streamwise (α_*) and spanwise (β_*) wavenumbers in plane Couette–Poiseuille flow for: (a) maximal amplification G_{max} for $Re = 500$. The highest amplification occurs for $(\alpha_* = 0, \beta_* = 1.83)$ and it is independent of Reynolds number. (b) Onset of unconditional stability Re_E . The minimal Reynolds number, $Re_E = 32.53$, is reached for $(\alpha_* = 0, \beta_* = 1.728)$.

	t_{*max}	G_{max}	G'_{max}	α_{*opt}	β_{*opt}
Couette–Poiseuille	$0.107 Re$	$0.435 \times 10^{-3} Re^2$	$0.934 \times 10^{-3} Re^2$	0	1.83
Pure Couette	$0.117 Re$	$1.184 \times 10^{-3} Re^2$	—	$35/Re$	1.6
Pure Poiseuille	$0.075 Re$	$0.196 \times 10^{-3} Re^2$	—	0	2.04

TABLE 1. Dependence of t_{*max} , G_{max} and G'_{max} on Re for plane Couette–Poiseuille flow. For comparison and verification, we calculate the scaling for pure plane Couette and Poiseuille flows, which agree with existing results (Schmid & Henningson 2001).

where $\mathbf{q} = [\mathbf{u}'_*, \mathbf{v}'_*, \mathbf{w}'_*]$ corresponds to velocity fluctuations, $\|\mathbf{q}_{out}\|^2 = \|\mathbf{q}(t_{*max})\|^2$ is the energy of the velocity fluctuations at t_{*max} calculated in the entire domain and $\|\mathbf{q}_{opt}\|^2 = \|\mathbf{q}(t_* = 0)\|^2$ is the energy of the initial perturbation optimized for all \mathbf{q}_0 that leads to the maximal energy gain. The details of the calculations are described in Schmid & Henningson (2001).

In figure 2(a) we present the dependence of G_{max} on α_* and β_* for $Re = 500$. There is a distinct peak at $\alpha_{*opt} = 0, \beta_{*opt} = 1.83$, with no streamwise dependence as is the case for plane Poiseuille flow (Schmid & Henningson 2001). We verify that this wavenumber pair is optimal within $Re \in (100, 1000)$. We also determine that G_{max} and t_{*max} scale with Re^2 and Re , respectively (table 1). Our present measurements with two-dimensional (2D) particle image velocimetry (PIV) are performed in one plane at $y_* = 0.3$. In contrast, the global quantity G_{max} measures the perturbation energy over the entire gap (in y_*) and for this reason it cannot be used for quantitative comparison of our experimental and theoretical results. In figure 3 we present that the maximal amplitude of streaks occurs at $y_* = 0.33$, independently of Reynolds number, and so we define the local quantity G'_{max} :

$$G'_{max} = \frac{\|\mathbf{q}_{out}(y_* = 0.33)\|^2}{\|\mathbf{q}_{opt}(y_* = 0.33)\|^2}. \tag{2.3}$$

We verify that both the global maximal gain G_{max} and the local maximal gain of the streamwise velocity component G'_{max} occur almost at the same time t_{*max} . In table 1 we show the scaling for G'_{max} .

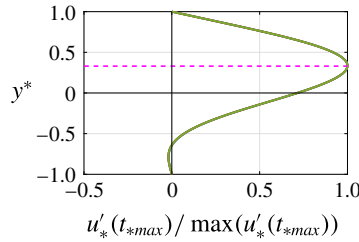


FIGURE 3. Velocity profile of the streamwise velocity fluctuations $u'_*(y_*)$ at t_{*max} for $(\alpha_* = 0, \beta_* = 1.83)$ and for $Re = 500$. The profile is normalized with the maximal value $u'_*(t_{*max})$ calculated over the entire gap in the wall-normal direction. Normalized velocity profiles for $Re \in (100, 1000)$ collapse to a single curve. The magenta dashed line marks $y_* = 0.33$, at which the streaks reach maximal value.

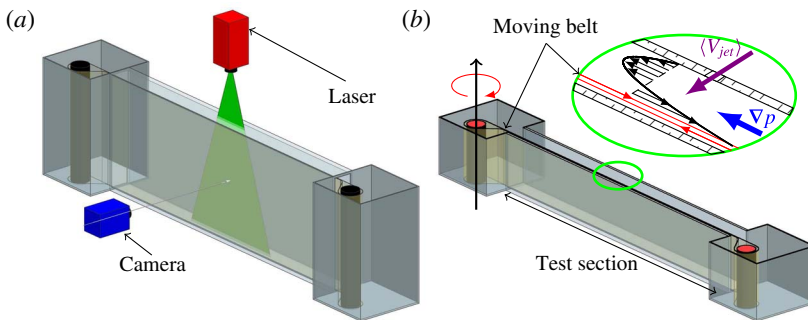


FIGURE 4. Experimental configuration: (a) perspective view; (b) cross-section in xy plane showing the base flow in the gap.

2.3. Condition for no transient growth – unconditional stability

To complete the full characterization of Couette–Poiseuille flow, we also calculate the energy Reynolds number Re_E (Joseph 1976) below which our flow is unconditionally stable ($d\|q\|^2/dt < 0$ for all q_0). In figure 2(b) we present the dependence of Re_E on α_* and β_* , whose minimum is $Re_E(\alpha_* = 0, \beta_* = 1.728) = 32.53$. The mode $\alpha_* = \beta_* = 0$, which represents base flow modification, is unconditionally stable up to $Re = 10^8$. This suggests that mean flow modification cannot extract energy from the base flow by itself and can be sustained only by nonlinear energy transfer from other modes.

3. Experimental results

3.1. Experimental set-up

The experimental set-up is presented in figure 4. It consists of a tank filled with water and with one closed-loop moving belt made of Mylar (of $0.175 \mu\text{m}$ thickness) near one bounding wall of the test section. The other wall, a glass plate, remains stationary. The moving wall and induced streamwise pressure gradient generate plane Couette–Poiseuille flow with nearly zero mean flux (for details see Klotz *et al.* (2017)). The experiments reported here were performed with a gap between moving and stationary walls of $2h = 10.8 \text{ mm}$ and the aspect ratios of the test section in the streamwise/spanwise directions are $L_x/h = 370.4$ and $L_z/h = 96.3$, respectively.

A water jet is injected through a hole of $\phi = 1.6 \text{ mm} = 0.30h$ in the wall-normal direction at the centre of the test section and triggers the turbulent spot. The jet comes from a small high-pressure water container with a pressure controller (SMS ITV2010), as well as an electromagnetic valve, which controls its duration. We determine the average jet speed (V_{jet}) by repeating injections and measuring the total volume of the injected water with a measuring cylinder. A localized turbulent spot is triggered by a jet injection of short duration (approximately 1 advection unit, $\Delta T_* \simeq 1$) with very weak amplitude ($A = \langle V_{jet} \rangle / U_{belt} \in (1.8, 3.2)$) to minimize the nonlinear interactions. To test the limits of validity of linear transient growth, we also investigate higher perturbation amplitudes ($A \in (5.7\text{--}34.9)$). Even if $\langle V_{jet} \rangle$ is greater than the typical velocity of the base flow, the duration of the injection is very short and the ratio of the injected volume $Q_{injected}$ to the total volume of the fluid volume in the channel $Q_{test\ section}$ is very low ($Q_{injected}/Q_{test\ section} \simeq A \times \Delta T_* \times 10^{-6}$). A similar situation was described in Darbyshire & Mullin (1995).

Our experimental set-up has one stationary wall without a moving plastic belt. This grants us the advantage of free access to introduce a well-controlled perturbation without the necessity of synchronizing the phase of the belt motion with the moment of injection, as was necessary in classical plane Couette experiment, in which the water jet was introduced through the hole in the plastic belt (Bottin *et al.* 1998), which may alter the direction of the injection.

We present the velocity fluctuations acquired with 2D PIV. The laser sheet was located parallel to the bounding walls at plane $y_* = 0.33$, where the base flow has nearly zero streamwise velocity and where linear theory predicts the highest amplitude of streaks for the optimal response. We use a Darvin Due laser (double-headed, maximum output 80 W, wavelength 527 nm) and Phantom Miro M120 camera ($1920 \times 1600 \text{ pix}$, pixel pitch 0.28 mm pix^{-1}). The moment at which we start the acquisition was synchronized by a National Instrument NI PCI-6602 synchronization device. The sequence of acquired images was cross-correlated by Dantec Dynamic Studio 4.0 software using rectangular interrogation windows $64 \times 8 \text{ pix}$ with 50% overlap. This unconventional choice is justified by the dominant streamwise component, which implies that the pixel displacement in the streamwise direction is an order of magnitude larger than in the spanwise direction. This aspect ratio also provides a high spatial resolution in the spanwise direction. For each $Re \in (330, 380, 480, 520, 580)$, we acquire 15 different realizations with acquisition frequency $f = 10 \text{ Hz}$. This frequency was sufficient to follow the dynamics of the streaks due to the nearly zero advection velocity of spots.

Our base flow is slightly affected by the belt phase motion due to the joining of two extremities of the belt (see Klotz *et al.* (2017) for quantitative analysis), which introduces weak three-dimensionality. In addition, there is a small back-flow in the gap between the glass plate and the layer of the moving belt closest to it (see red curve in inset of figure 4). As a result, our base flow has a slightly non-zero mean flux (the time-averaged base flow has $U_{avg} < 0.07U_{belt}$). In order to filter out the dependence of the base flow on the belt phase motion, we first measure the reference base flow (without triggering the turbulent spot) and then we subtract it for each actual realization (with a turbulent spot), keeping the same phase of belt motion as in the reference flow. In this way we calculate the velocity fluctuations: $u' = U_{measured} - U_{base\ flow}$ and $w' = W_{measured} - W_{base\ flow}$, where $W_{base\ flow} \simeq 0$.

3.2. Experimental evidence for transient growth

We denote mean and ensemble averaged energy by \bar{E} and $\langle E \rangle$, respectively: for the former we calculate the evolution of the energy fluctuations for each realization

Experiments on transient growth of turbulent spots

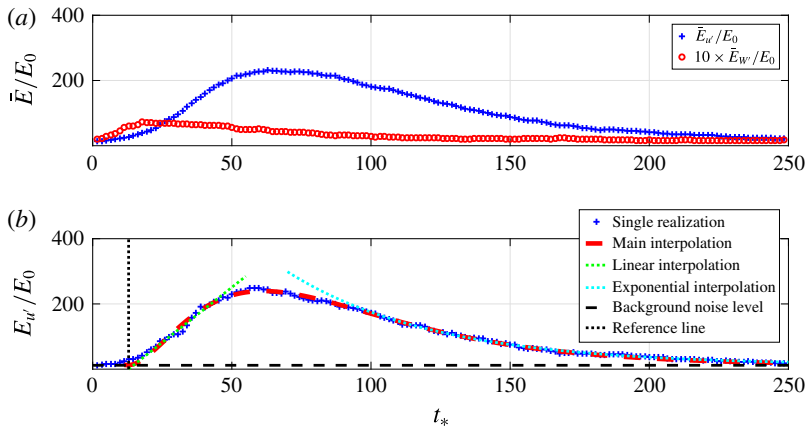


FIGURE 5. An example of the energy fluctuations for $Re = 480$, $A = 2.3$ representing typical transient growth evolution. Each point corresponds to a single instant measured at 10 Hz; (a) mean energy of streamwise ($\bar{E}_{u'}$) and spanwise ($\bar{E}_{w'}$) velocity fluctuations (note that $\bar{E}_{w'}$ is multiplied by a factor of 10); (b) $E_{u'}$ for a single realization (blue solid curve), interpolation proposed by Kim & Moehlis (2006) (red dashed curve), linear interpolation (green dotted line) and exponential decay interpolation (cyan dotted curve). The black dashed horizontal line represents the noise level due to the variation of the base flow. The black dotted vertical line marks the reference time.

separately and then we average them, while for the latter we ensemble-average the sequence of velocity fields of 15 realizations and then calculate the energy.

From the experimental point of view, the most difficult task is to determine the very weak energy of the initial perturbation E_0 . To calculate it, we analyse the streamwise and spanwise velocity components in the initial frame in the temporal sequence of $\langle E \rangle$ for each (Re, A) pair. Ensemble averaging filters out the variation of the base flow and enhances the signal that corresponds to the deterministic and repeatable perturbation. In addition, we consider only the region in the vicinity of the jet (by applying an appropriate mask covering $x_* \in (-6.6, 8.2)$, $z_* < |5.8|$). We further enhance the accuracy of E_0 by filtering out the signal close to the spatial homogeneous $(0, 0)$ mode with a fast Fourier transform. We normalize both \bar{E} and $\langle E \rangle$ with E_0 .

In figure 5(a) we show that the mean energy of spanwise velocity fluctuations ($\bar{E}_{w'}$, in red) is more than one order of magnitude lower than that of the streamwise component ($\bar{E}_{u'}$, in blue). For this reason in the following we consider only $\bar{E}_{u'}$. In figure 5(b) we present a typical evolution of $\bar{E}_{u'}$ for a single realization (blue points), where the linear growth at initial stage (called also algebraic growth) is followed by the eventual exponential decay. It is further illustrated by a sequence of streamwise velocity fluctuation fields (u'_*) measured with 2D PIV (figure 6). The internal structure of the localized spot is dominated by streaks, with two dominant wavenumbers calculated using two-dimensional FFT transform: $\beta_{1*} = 1.84$ (mostly at the left front and at the tips of the turbulent spot) and $\beta_{2*} = 2.97$ (at the right front). These wavenumbers correspond to the wavenumbers $\lambda_{z1*} = 3.4$ and $\lambda_{z2*} = 2.1$, respectively. The former value is in perfect agreement with our theoretical predictions (see figure 2a). One possibility to explain the presence of the second wavenumber is the existence of two layers of asymmetric vortices that occupy different regions in y .

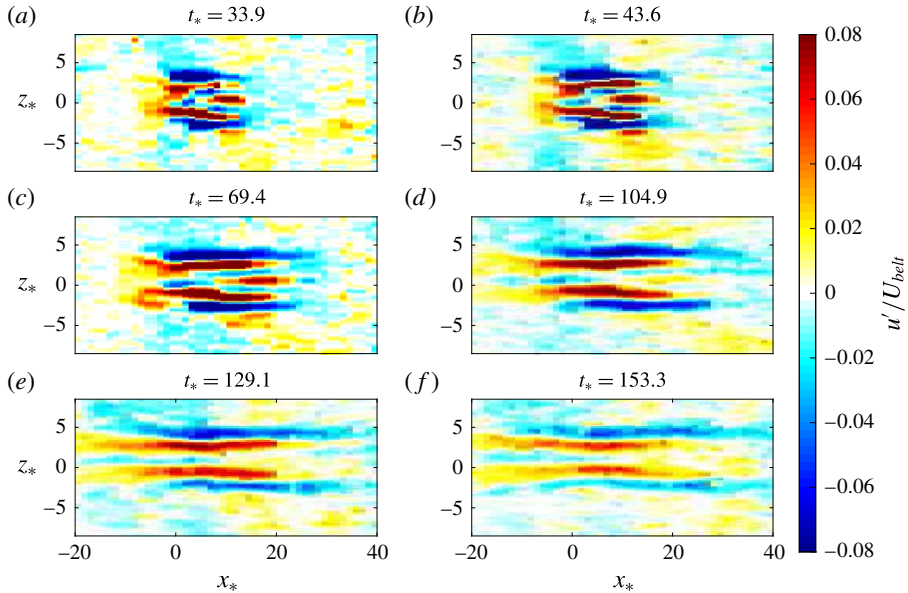


FIGURE 6. Temporal evolution of the spot, represented by isovalues of the streamwise velocity fluctuations $u'_*(x_*, y_* = 0.3, z_*)$ at different times, measured with PIV for $Re = 480$, $A = 2.3$ and for a single realization; $t_* = 69.4$ corresponds to the spatial structure when the maximal energy gain is reached.

This problem is the subject of ongoing investigation. On each subplot in figure 7(a–e) we present all realizations acquired for a given (Re, A) pair. Figure 7(a–d) corresponds to the weakest jet amplitude A used in our experiment, which is appropriate for analysing linear transient growth (note that $\langle V_{jet} \rangle$ is kept constant and A varies only due to U_{belt}). Up to $Re = 480$ all realizations show the typical behaviour of linear transient growth: initial algebraic growth followed by exponential decay (see also interpolation in figure 5b). This is also true for most realizations for $Re = 520$, with the exception of a single realization, in which the turbulent spot becomes self-sustained. We present this spatial and temporal evolution in figure 8, where the modulation of streaks can be observed. As we increase Re further to 580, more spots behave in this way. However, we note that this process is random and some realizations still show transient growth and decaying dynamics. On each subfigure in figure 7 we mark one typical example of transient growth evolution and one example of a self-sustained spot (if any exists) by a thick black/blue curve, respectively. In figure 7(e–f) the same transition from transient (figure 7e) to self-sustained dynamics (figure 7f) is observed for higher A , but it occurs for lower Re .

The behaviour of our measured localized turbulent spot can be compared with the dynamics of double-localized (in x, z directions) exact coherent structure in plane Couette flow after being perturbed in its most unstable direction, as observed numerically by Brand & Gibson (2014). For low enough Reynolds number, all cases led to monotonic relaminarization, preceded in most cases by a period of transient growth (compare with figure 7a,b,e). Above a given Reynolds number some realizations led to relaminarization and the others produce long-lived turbulent spots with complex, long-term, and perturbation- and Reynolds-dependent behaviour (compare with figure 7c,d,f). This sensitive dependence of the dynamics on the

Experiments on transient growth of turbulent spots

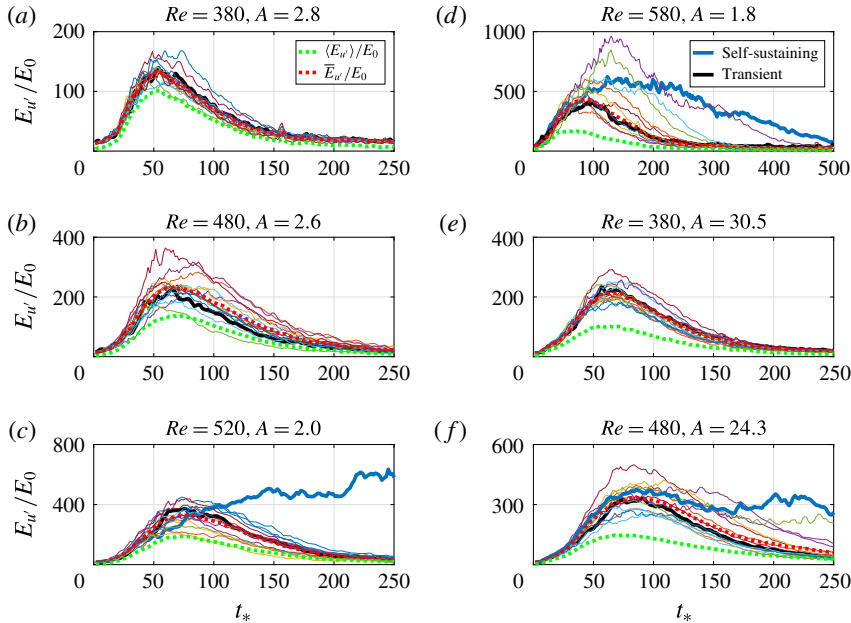


FIGURE 7. On each subfigure the evolution of $E_{u'}$ for 15 different realizations for a given Re and A are shown. For each combination we mark with a thick line a single typical realization, for which a turbulent spot shows transient growth and decay (black solid line) and self-sustained dynamics (blue thick line). Also shown are the mean ($\bar{E}_{u'}$) and ensemble averaged ($\langle E_{u'} \rangle$) energy evolution (red and green dotted lines, respectively). The blue curve in (c) corresponds to figure 8.

perturbation implies that their solution must lie on the laminar/turbulent boundary. One may also use the same argument for our results, keeping in mind that in the present case, the spatial structure can differ slightly for different experimental realizations, thus these do not represent a single point in a phase space. Nevertheless, this suggests that the turbulent spots that we observed may be related to the laminar/turbulent boundary.

Our measured structures also resemble the optimal wave packets localized in the both homogeneous directions calculated for the Blasius boundary layer using linearized Navier–Stokes equations (Cherubini *et al.* 2010b). These optimal wave packets are dominated by streamwise-localized streaks, as in our case.

However, we recall that these numerical simulations were performed for different examples of wall-bounded shear flows (plane Couette flow for doubly-localized exact coherent structure and boundary layer flow for optimal wave packets). To our knowledge for the moment no results concerning optimal wave packets or exact coherent structures are available for plane Couette–Poiseuille flow, and for this reason more quantitative comparison with our experimental work is not possible.

We analyse separately every realization representing typical transient growth evolution and then calculate the mean values of t_{*max} and G'_{max} . To improve accuracy of determination of these two quantities and to systematically determine the reference time from which we calculate t_{*max} , we fit our experimental data to the formula proposed by Kim & Moehlis (2006) (red dashed curve in figure 5b):

$$E_{u'}(t_*)/E_0 = (a)^2 + B.E. = (A_1 \times \exp(\gamma_1 t_*) + A_2 \times \exp(\gamma_2 t_*))^2 + B.E., \quad (3.1)$$

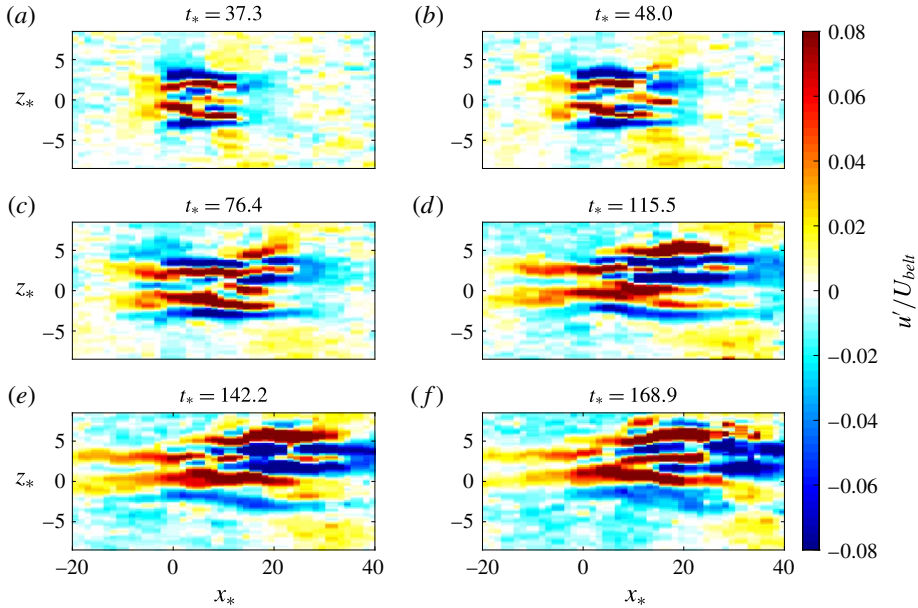


FIGURE 8. The same as figure 6 but for $Re = 520$, $A = 2.0$. The evolution represents a realization without decay (self-sustained case).

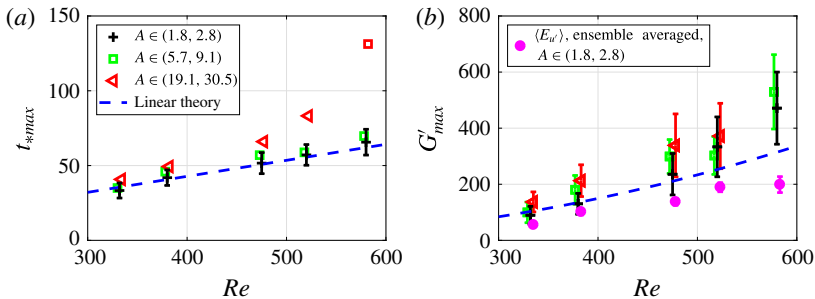


FIGURE 9. Experimental and theoretical values for: (a) t_{*max} (red square at ($Re = 580$, $t_{*max} = 133$) is determined from $\bar{E}_{u'}$ evolution); (b) energy gain G'_{max} .

where a stands for the amplitude of the streaks and $\gamma_1, \gamma_2 < 0$. In addition, $|A_1| \approx -|A_2|$, $\gamma_1 \approx \gamma_2$, which provides non-normal behaviour. We add a supplementary term ($B.E.$) representing the background experimental noise and possible variation of the base flow, whose amplitude is represented by the black dashed horizontal line in figure 5(b). We define the reference time as the moment at which interpolation reaches the level of the background noise and we measure t_{*max} from this reference. One can see in figure 9 that for the lowest amplitude perturbation A (black crosses) t_{*max} is well predicted by linear transient growth theory and the value of G'_{max} seems to be slightly higher. As we increase the perturbation amplitude, t_{*max} increases and deviates from the theoretical prediction. G'_{max} seems to slightly increase with both amplitude and Re . We also note that a full comparison of the energy gain between the theory and experiment would require one to measure also the wall-normal component.

Nonlinear transient growth concepts described in (Duguet *et al.* 2013; Kerswell, Pringle & Willis 2014; Farano *et al.* 2016) can give further insight into the dynamics of transient states. These theories are based on fully nonlinear Navier–Stokes equations and provide the nonlinear optimal perturbation (NLOP) (typically in the sense of the minimal energy difference from the laminar flow) that can lead to turbulence. Specifically, in contrast to the streamwise-extended optimal perturbations given by the linear approach, the NLOP is fully localized in space and has a higher energy gain than the linear theory prediction (Cherubini *et al.* 2010a; Pringle & Kerswell 2010; Kerswell *et al.* 2014). In our experiment we also use the spatially localized perturbation and for the highest Reynolds numbers the measured energy gain is larger than the value obtained with linear theory. Furthermore, using numerical simulations, Pringle, Willis & Kerswell (2015) observed that before the lift-up mechanism (related to transient growth) takes over, causing the streaks to develop and elongate, the NLOP must initially unpack in space, which explains why we observed non-zero reference time in our experiments. Specifically, they reported that the initial unpacking of NLOP takes approximately 10 advective units, which is of the same order as typical values of the reference time in our measurements.

4. Conclusions

This is the first experimental study of spatial and temporal evolution of the transient amplification and subsequent decay of localized spots in plane Couette–Poiseuille flow. We supplement it by full theoretical analysis of its linear aspects (including energy gain of the perturbation). We compare both results, showing quantitatively that the temporal evolution of a localized spot triggered by a well-controlled external perturbation can be explained by linear theory. However, we also observe that due to the spatially localized nature of the perturbation, some initial time for unpack is required before transient growth (or lift-up mechanism) will amplify the streaks, which agrees with nonlinear transient growth theory. Our results indicate that ensemble averaging, often used to study linear transient growth in previous experimental work (e.g. Westin *et al.* 1998, White 2002), underestimates the energy gain (figure 9b), which is due to the variation of the instantaneous spanwise position of streaks for different realizations. We also present that when the Reynolds number and/or amplitude are high enough, the spot may become self-sustained with a non-deterministic lifetime, which shows the limits of validity of the linear theory. These states are characterized by different dynamics, with postponed decay or irregular growth, and resemble in many aspects the edge state: temporally, with long persistence time followed by decay, and spatially, where the streaks show evident modulation in the streamwise direction (figure 8). Our systematic measurements represent a significant development when compared to previous experiments in other wall-bounded shear flows, as we can precisely measure both spatial and temporal aspects of the evolution of turbulent spots triggered by well-controlled perturbation.

Acknowledgements

We thank L. Tuckerman for permanent help and suggestions, and I. Frontczak for help with experiments. We also acknowledge stimulating discussions with M. Avila and C. Cossu during the ‘Recurrence, Self-Organization, and the Dynamics Of Turbulence’ conference organized by KITP in 2017, in Santa Barbara. This work was supported by a grant, TRANSFLOW, provided by the Agence Nationale de la Recherche.

References

- AIDER, J. L. & WESFREID, J. E. 1996 Characterization of longitudinal Görtler vortices in a curved channel using ultrasonic Doppler velocimetry and visualizations. *J. Phys. III France* **6** (7), 893–906.
- ANDERSSON, P., BERGGREN, M. & HENNINGSON, D. S. 1999 Optimal disturbances and bypass transition in boundary layers. *Phys. Fluids* **11** (1), 134–150.
- BALAKUMAR, P. 1997 Finite-amplitude equilibrium solutions for plane Poiseuille–Couette flow. *Theor. Comput. Fluid Dyn.* **9** (2), 103–119.
- BERGSTRÖM, L. B. 1995 Transient properties of a developing laminar disturbance in pipe Poiseuille flow. *Eur. J. Mech. (B/Fluids)* **14** (5), 601–615.
- BERGSTRÖM, L. B. 2005 Nonmodal growth of three-dimensional disturbances on plane Couette–Poiseuille flows. *Phys. Fluids* **17** (1), 014105.
- BOTTIN, S., DAUCHOT, O., DAVIAUD, F. & MANNEVILLE, P. 1998 Experimental evidence of streamwise vortices as finite amplitude solutions in transitional plane Couette flow. *Phys. Fluids* **10** (10), 2597–2607.
- BRAND, E. & GIBSON, J. F. 2014 A doubly localized equilibrium solution of plane Couette flow. *J. Fluid Mech.* **750**, R3.
- CHERUBINI, S., DE PALMA, P., ROBINET, J.-CH. & BOTTARO, A. 2010a Rapid path to transition via nonlinear localized optimal perturbations in a boundary-layer flow. *Phys. Rev. E* **82** (6), 066302.
- CHERUBINI, S., ROBINET, J.-C., BOTTARO, A. & PALMA, P. D. 2010b Optimal wave packets in a boundary layer and initial phases of a turbulent spot. *J. Fluid Mech.* **656**, 231–259.
- DARBYSHIRE, A. G. & MULLIN, T. 1995 Transition to turbulence in constant-mass-flux pipe flow. *J. Fluid Mech.* **289**, 83–114.
- DAVIAUD, F., HEGSETH, J. & BERGÉ, P. 1992 Subcritical transition to turbulence in plane Couette flow. *Phys. Rev. Lett.* **69** (17), 2511–2514.
- DENISSEN, N. A. & WHITE, E. B. 2013 Secondary instability of roughness-induced transient growth. *Phys. Fluids* **25** (11), 114108.
- DUGUET, Y., MONOKROUSOS, A., BRANDT, L. & HENNINGSON, D. S. 2013 Minimal transition thresholds in plane Couette flow. *Phys. Fluids* **25** (8), 084103.
- DURIEZ, T., AIDER, J. L. & WESFREID, J. E. 2009 Self-sustaining process through streak generation in a flat-plate boundary layer. *Phys. Rev. Lett.* **103** (14), 144502.
- ELOFSSON, P. A., KAWAKAMI, M. & ALFREDSSON, P. H. 1999 Experiments on the stability of streamwise streaks in plane Poiseuille flow. *Phys. Fluids* **11** (4), 915–930.
- FARANO, M., CHERUBINI, S., ROBINET, J.-C. & PALMA, P. D. 2016 Subcritical transition scenarios via linear and nonlinear localized optimal perturbations in plane Poiseuille flow. *Fluid Dyn. Res.* **48** (6), 061409.
- HENNINGSON, D. S., LUNDBLADH, A. & JOHANSSON, A. V. 1993 A mechanism for bypass transition from localized disturbances in wall-bounded shear flows. *J. Fluid Mech.* **250**, 169–207.
- HOEPFFNER, J. 2006 Stability and control of shear flows subject to stochastic excitations. Doctoral dissertation, KTH Mechanics, Stockholm, Sweden, code downloaded from <http://www.lmm.jussieu.fr/~hoepffner/codes.php>.
- JOSEPH, D. D. 1976 *Stability of Fluid Motions I*. Springer.
- KERSWELL, R. R., PRINGLE, C. C. T. & WILLIS, A. P. 2014 An optimization approach for analysing nonlinear stability with transition to turbulence in fluids as an exemplar. *Rep. Prog. Phys.* **77** (8), 085901.
- KIM, L. & MOEHLIS, J. 2006 Transient growth for streak-streamwise vortex interactions. *Phys. Lett. A* **358** (5–6), 431–437.
- KLINGMANN, B. G. B. 1992 On transition due to three-dimensional disturbances in plane Poiseuille flow. *J. Fluid Mech.* **240**, 167–195.
- KLINGMANN, B. G. B. & ALFREDSSON, P. H. 1991 Experiments on the evolution of a point-like disturbance in plane Poiseuille flow into a turbulent spot. In *Advances in Turbulence 3*, pp. 182–188. Springer.

Experiments on transient growth of turbulent spots

- KLOTZ, L., LEMOULT, G., FRONTZAK, I., TUCKERMAN, L. S. & WESFREID, J. E. 2017 Couette–Poiseuille flow experiment with zero mean advection velocity: subcritical transition to turbulence. *Phys. Rev. Fluids* **2** (4), 043904.
- LEMOULT, G., AIDER, J. L. & WESFREID, J. E. 2013 Turbulent spots in a channel: large-scale flow and self-sustainability. *J. Fluid Mech.* **731**, R1.
- MARAIS, C., GODOY-DIANA, R., BARKLEY, D. & WESFREID, J. E. 2011 Convective instability in inhomogeneous media: Impulse response in the subcritical cylinder wake. *Phys. Fluids* **23** (1), 014104.
- MATSUBARA, M. & ALFREDSSON, P. H. 2001 Disturbance growth in boundary layers subjected to free-stream turbulence. *J. Fluid Mech.* **430**, 149–168.
- PETITJEANS, P. & WESFREID, J. E. 1996 Spatial evolution of Görtler instability in a curved duct of high curvature. *AIAA Paper* **34** (9), 1793–1800.
- PHILIP, J., SVIZHER, A. & COHEN, J. 2007 Scaling law for a subcritical transition in plane Poiseuille flow. *Phys. Rev. Lett.* **98** (15), 154502.
- PRINGLE, C. C. T. & KERSWELL, R. R. 2010 Using nonlinear transient growth to construct the minimal seed for shear flow turbulence. *Phys. Rev. Lett.* **105** (15), 154502.
- PRINGLE, C. C. T., WILLIS, A. P. & KERSWELL, R. R. 2015 Fully localised nonlinear energy growth optimals in pipe flow. *Phys. Fluids* **27** (6), 064102.
- RESHOTKO, E. 2001 Transient growth: a factor in bypass transition. *Phys. Fluids* **13** (5), 1067–1075.
- SCHMID, P. J. & HENNINGSON, D. S. 2001 *Stability and Transition in Shear Flows*. Springer.
- TILLMARK, N. & ALFREDSSON, P. H. 1991 An experimental study of transition in plane Couette flow. In *Advances in Turbulence 3*, pp. 235–242. Springer.
- TSANIS, I. K. & LEUTHEUSSER, H. J. 1988 The structure of turbulent shear-induced countercurrent flow. *J. Fluid Mech.* **189**, 531–552.
- WESTIN, K. J. A., BAKCHINOV, A. A., KOZLOV, V. V. & ALFREDSSON, P. H. 1998 Experiments on localized disturbances in a flat plate boundary layer. Part 1. The receptivity and evolution of a localized free stream disturbance. *Eur. J. Mech. (B/Fluids)* **17** (6), 823–846.
- WESTIN, K. J. A., BOIKO, A. V., KLINGMANN, B. G. B., KOZLOV, V. V. & ALFREDSSON, P. H. 1994 Experiments in a boundary layer subjected to free stream turbulence. Part 1. Boundary layer structure and receptivity. *J. Fluid Mech.* **281**, 193–218.
- WHITE, E. B. 2002 Transient growth of stationary disturbances in a flat plate boundary layer. *Phys. Fluids* **14** (12), 4429–4439.